

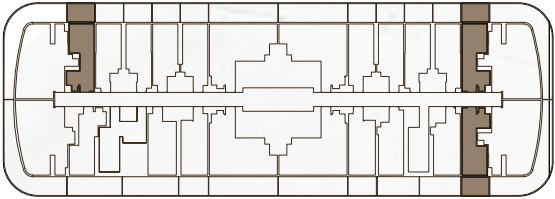
The background of the entire page is a close-up, high-resolution image of a wood grain. The grain is dark brown with prominent, wavy, and swirling patterns that create a sense of depth and texture. The lighting is warm, highlighting the natural variations in the wood's color and grain structure.

BINGHATTI SKYHALL

FLOOR PLAN BROCHURE

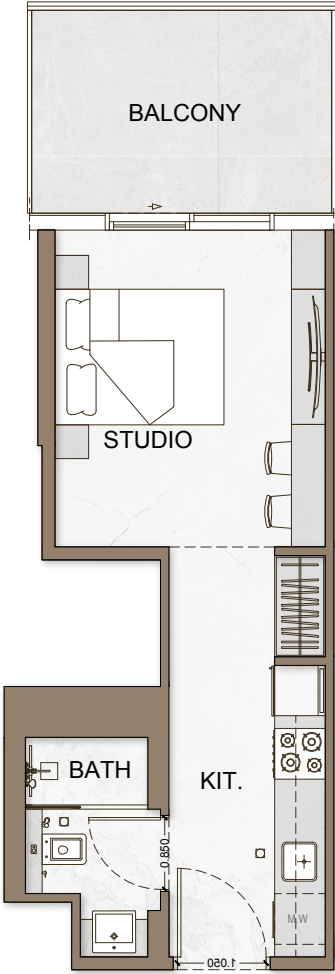
STUDIO

TYPE - 1



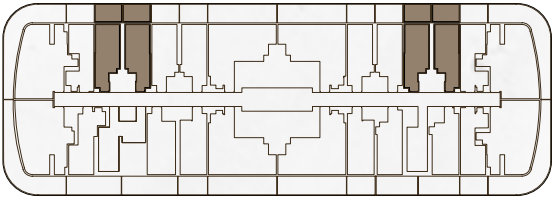
AREA	SQ.M	SQ.FT
SUITE AREA	27.79 m²	299 ft²
BALCONY AREA	9.00 m²	97 ft²
TOTAL UNIT AREA	36.79 m²	396 ft²

FLAT DESIGN COMPONENTS		
BATH		4 m²
STUDIO		14 m²
KITCHEN		7 m²



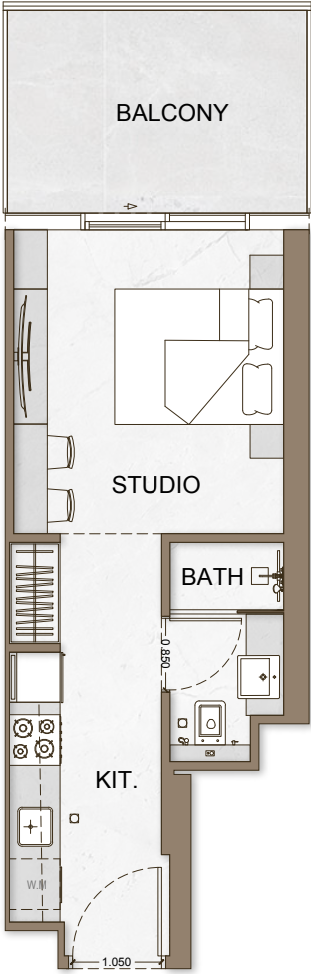
STUDIO

TYPE - 2



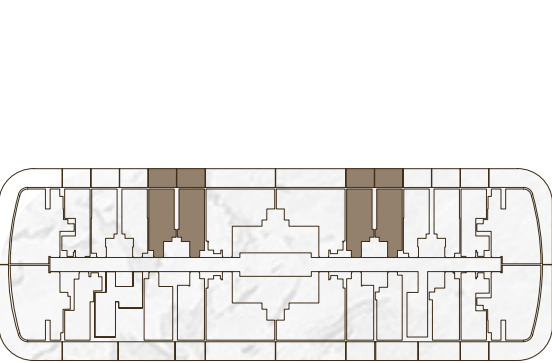
AREA	SQ.M	SQ.FT
SUITE AREA	27.71 m²	298 ft²
BALCONY AREA	9.01 m²	97 ft²
TOTAL UNIT AREA	36.72 m²	395 ft²

FLAT DESIGN COMPONENTS		
MASTER BATH		3 m²
MASTER BEDROOM		14 m²
LIVING & DINING		7 m²



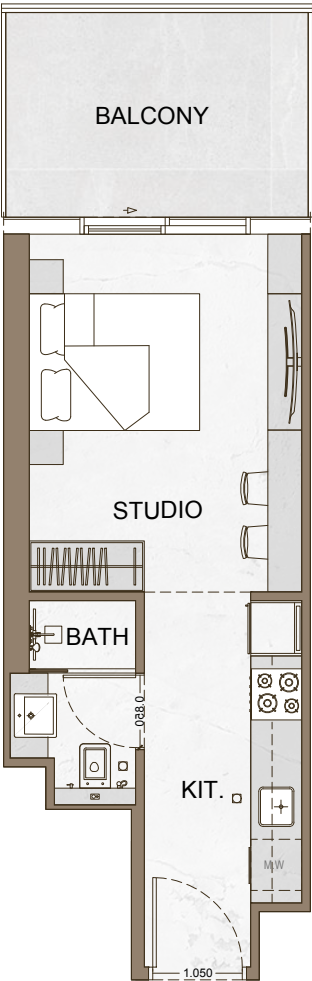
STUDIO

TYPE - 3



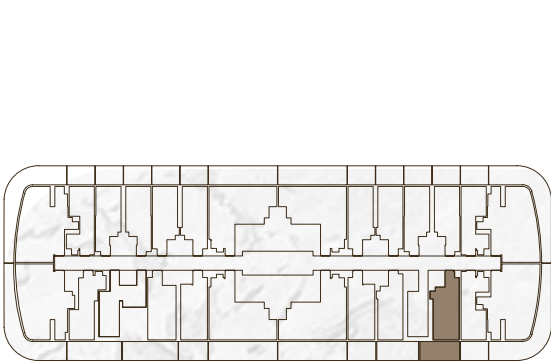
AREA	SQ.M	SQ.FT
SUITE AREA	27.92 m²	301 ft²
BALCONY AREA	9.00 m²	97 ft²
TOTAL UNIT AREA	36.92 m²	397 ft²

FLAT DESIGN COMPONENTS		
BATH		3 m²
STUDIO		13 m²
KITCHEN		8 m²



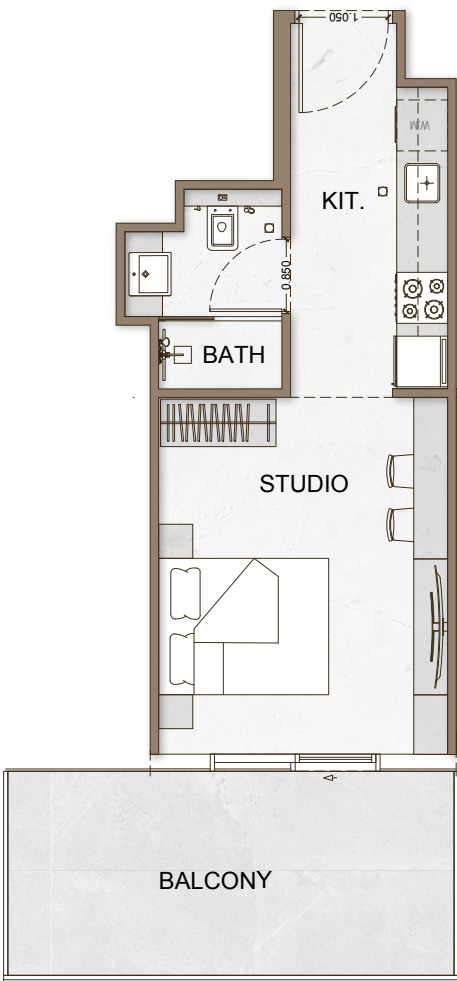
STUDIO

TYPE - 4



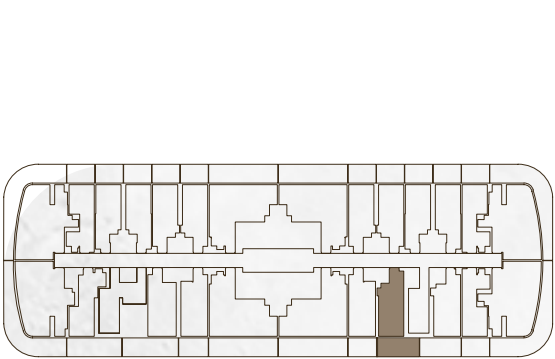
AREA	SQ.M	SQ.FT
SUITE AREA	29.69 m²	320 ft²
BALCONY AREA	13.78 m²	148 ft²
TOTAL UNIT AREA	43.47 m²	468 ft²

FLAT DESIGN COMPONENTS		
MASTER BATH		4 m²
MASTER BEDROOM		14 m²
LIVING & DINING		8 m²



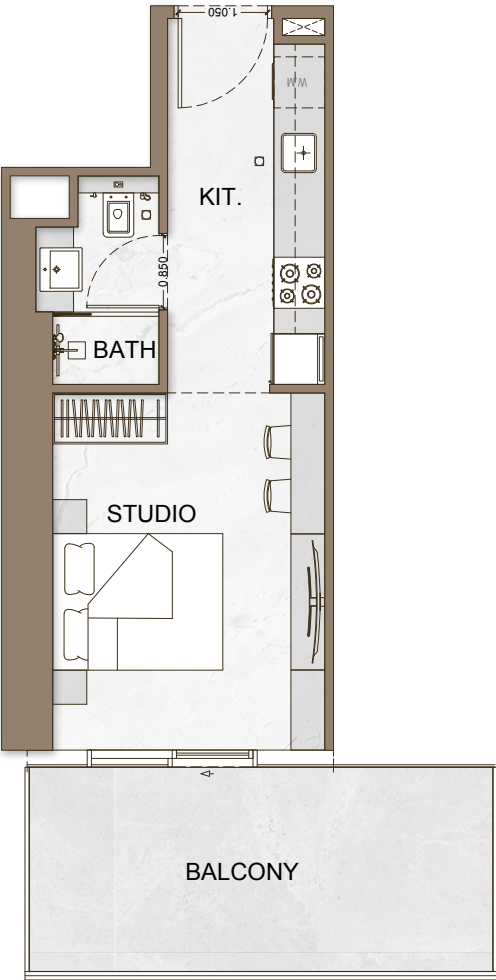
STUDIO

TYPE - 5



AREA	SQ.M	SQ.FT
SUITE AREA	29.64 m²	319 ft²
BALCONY AREA	14.24 m²	153 ft²
TOTAL UNIT AREA	43.88 m²	472 ft²

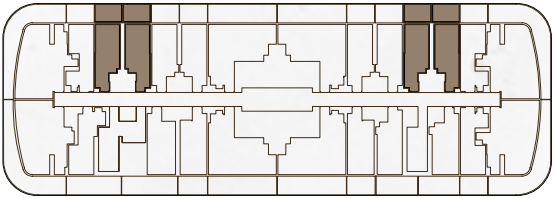
FLAT DESIGN COMPONENTS		
BATH	3 m²	
STUDIO	13 m²	
KITCHEN	8 m²	



Disclaimer: 1. All stated dimensions and services whether in relation to the building, common areas or individual units are subject to government and local authority approvals. Final dimensions and services will be stated in your sales and purchase agreement 2. All room dimensions are measured to structural elements and exclude wall finishes and construction tolerances. 3. All dimensions have been provided by our consultant architects. 4. All materials, dimensions and drawings are approximate. Information is subject to change without notice. 5. Actual suite area may vary from the stated area. Drawings are not to scale. The Developer reserves the right to make any revisions whatsoever including for aesthetic purposes.

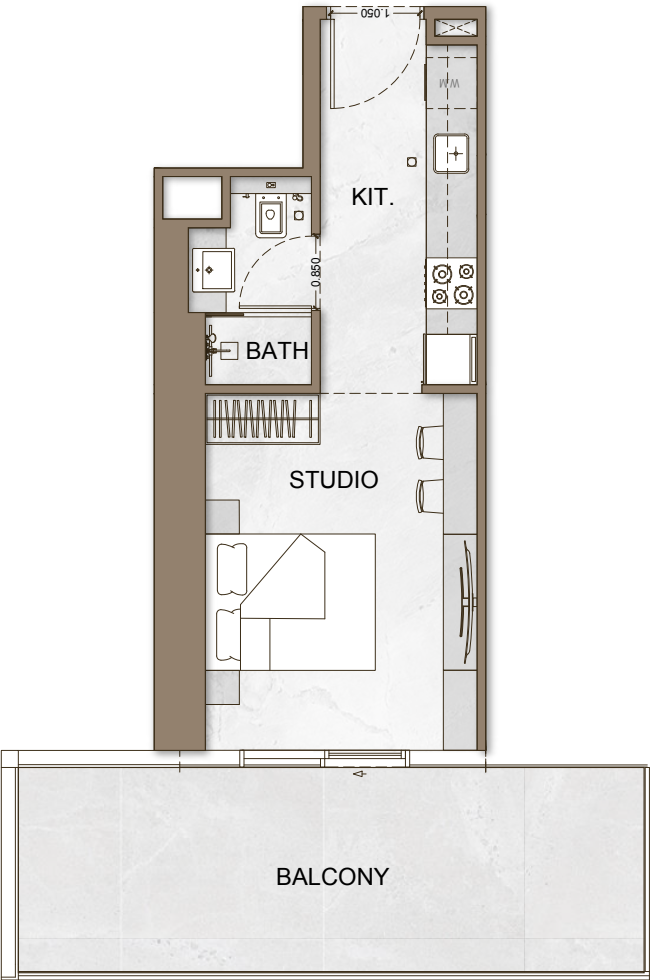
STUDIO

TYPE - 6



AREA	SQ.M	SQ.FT
SUITE AREA	27.71 m²	298 ft²
BALCONY AREA	9.01 m²	97 ft²
TOTAL UNIT AREA	36.72 m²	395 ft²

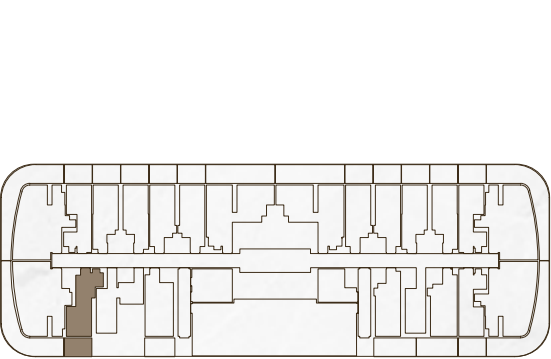
FLAT DESIGN COMPONENTS		
MASTER BATH	4 m²	
MASTER BEDROOM	14 m²	
LIVING & DINING	7 m²	



6. Calculation of suite area is measured as the area bounded by the centre line of demising or partition walls separating one unit from another unit, the exterior face of all exterior walls, and the exterior face of the corridor wall enclosing the adjoining unit. 7. Calculation of balcony area is measured as the area bounded by the centre line of demising or partition walls separating one unit from another unit, the outmost face of the enclosing guard and the external face of the adjoining balcony. 8. The units are measured at typical floor in the building. Columns may vary in size depending on the floor level. 9. For each unit type, unit sizes and details might be different and your sales and purchase agreement will contain the actual size of each specific unit.

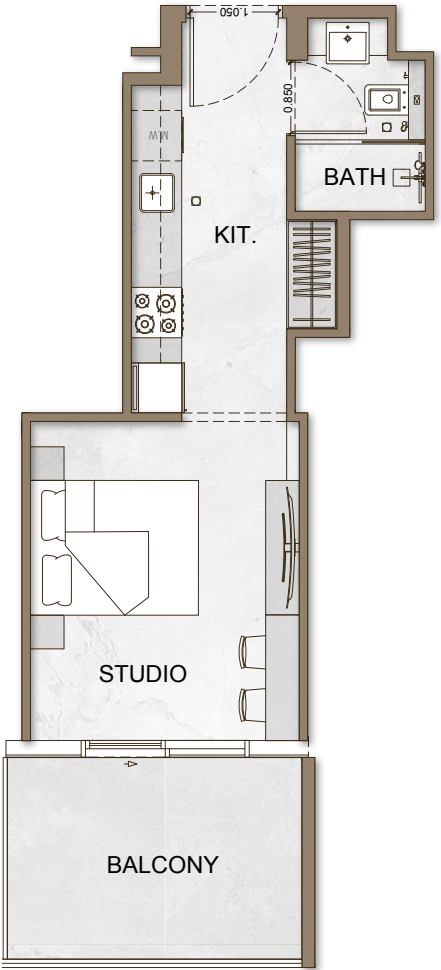
STUDIO

TYPE - 7



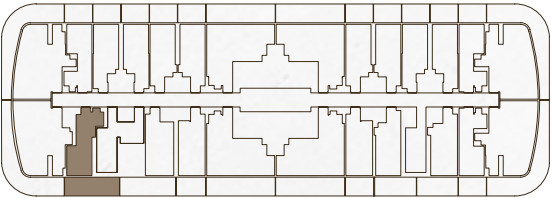
AREA	SQ.M	SQ.FT
SUITE AREA	28.88 m²	311 ft²
BALCONY AREA	9.04 m²	97 ft²
TOTAL UNIT AREA	37.92 m²	408 ft²

FLAT DESIGN COMPONENTS		
BATH		3 m²
STUDIO		12 m²
KITCHEN		9 m²



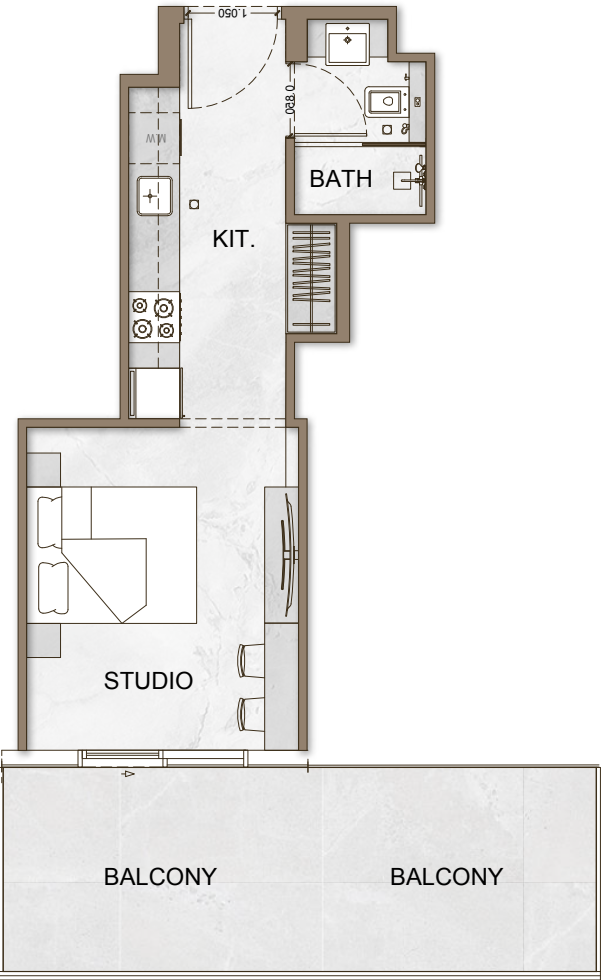
STUDIO

TYPE - 8



AREA	SQ.M	SQ.FT
SUITE AREA	28.88 m²	311 ft²
BALCONY AREA	17.46 m²	188 ft²
TOTAL UNIT AREA	46.34 m²	499 ft²

FLAT DESIGN COMPONENTS		
MASTER BATH		3 m²
MASTER BEDROOM		12 m²
LIVING & DINING		9 m²

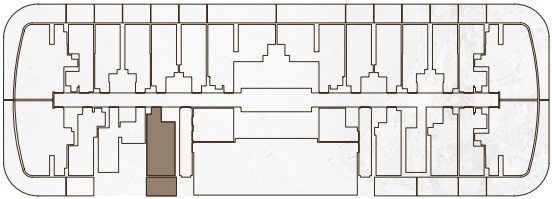


Disclaimer: 1. All stated dimensions and services whether in relation to the building, common areas or individual units are subject to government and local authority approvals. Final dimensions and services will be stated in your sales and purchase agreement 2. All room dimensions are measured to structural elements and exclude wall finishes and construction tolerances. 3. All dimensions have been provided by our consultant architects. 4. All materials, dimensions and drawings are approximate. Information is subject to change without notice. 5. Actual suite area may vary from the stated area. Drawings are not to scale. The Developer reserves the right to make any revisions whatsoever including for aesthetic purposes.

6. Calculation of suite area is measured as the area bounded by the centre line of demising or partition walls separating one unit from another unit, the exterior face of all exterior walls, and the exterior face of the corridor wall enclosing the adjoining unit. 7. Calculation of balcony area is measured as the area bounded by the centre line of demising or partition walls separating one unit from another unit, the outmost face of the enclosing guard and the external face of the adjoining balcony. 8. The units are measured at typical floor in the building. Columns may vary in size depending on the floor level. 9. For each unit type, unit sizes and details might be different and your sales and purchase agreement will contain the actual size of each specific unit.

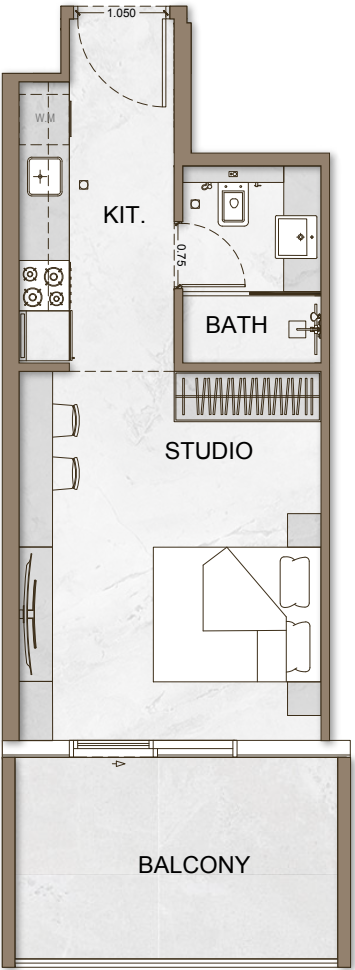
STUDIO

TYPE - 9



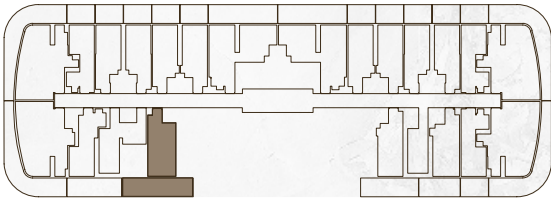
AREA	SQ.M	SQ.FT
SUITE AREA	31.61 m²	340 ft²
BALCONY AREA	10.00 m²	108 ft²
TOTAL UNIT AREA	41.61 m²	448 ft²

FLAT DESIGN COMPONENTS		
BATH	4 m²	
STUDIO	16 m²	
KITCHEN	7 m²	



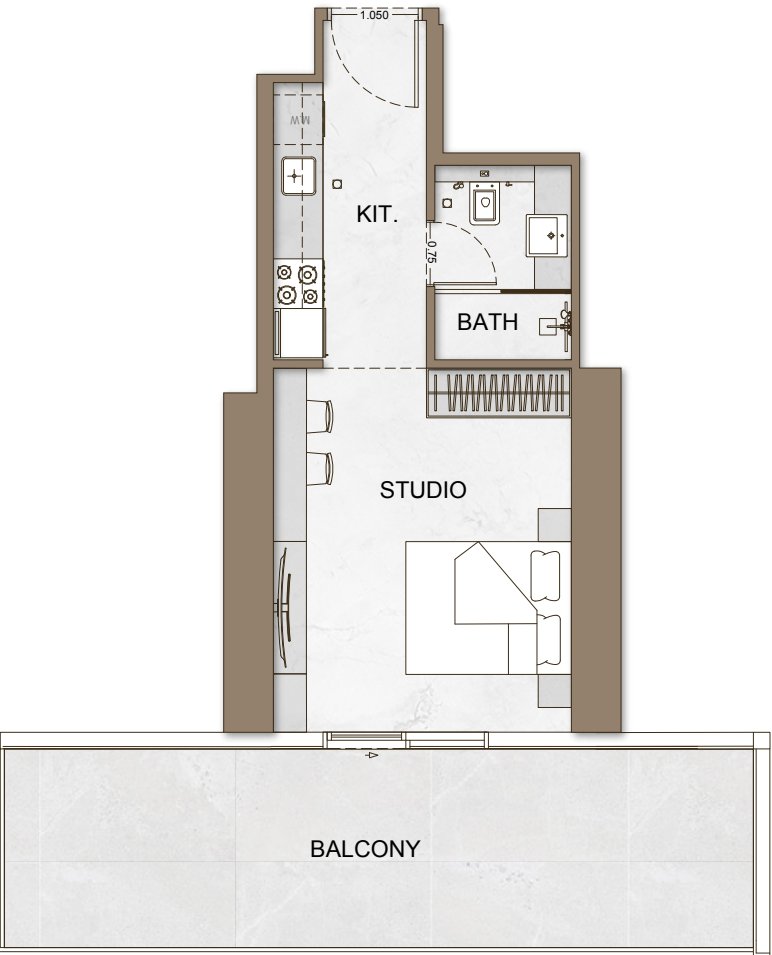
STUDIO

TYPE - 10



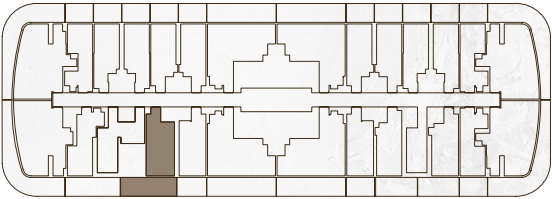
AREA	SQ.M	SQ.FT
SUITE AREA	31.61 m²	340 ft²
BALCONY AREA	22.55 m²	243 ft²
TOTAL UNIT AREA	54.16 m²	583 ft²

FLAT DESIGN COMPONENTS		
MASTER BATH	4 m²	
MASTER BEDROOM	16 m²	
LIVING & DINING	7 m²	



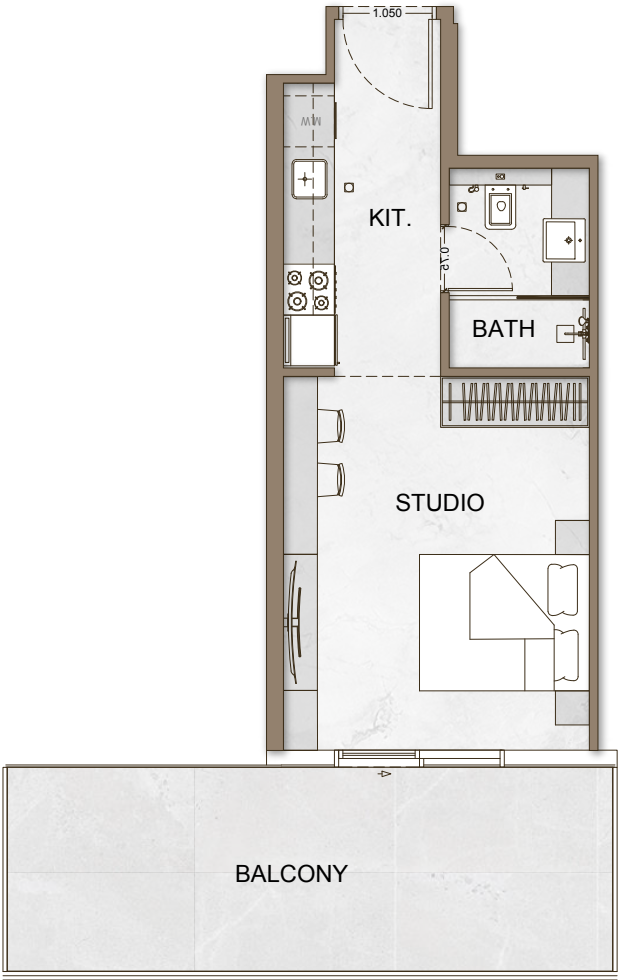
STUDIO

TYPE - 11



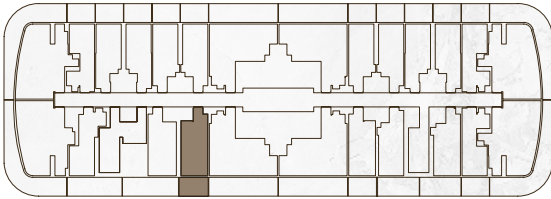
AREA	SQ.M	SQ.FT
SUITE AREA	31.61 m²	340 ft²
BALCONY AREA	18.97 m²	204 ft²
TOTAL UNIT AREA	50.58 m²	544 ft²

FLAT DESIGN COMPONENTS		
BATH		4 m²
STUDIO		16 m²
KITCHEN		7 m²



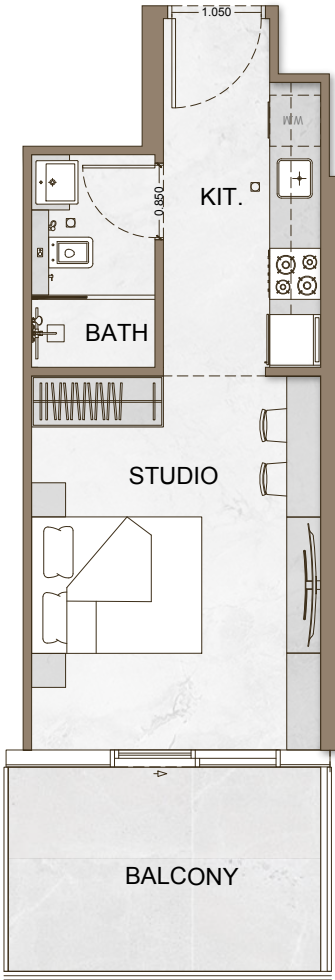
STUDIO

TYPE - 12



AREA	SQ.M	SQ.FT
SUITE AREA	29.49 m²	317 ft²
BALCONY AREA	9.50 m²	102 ft²
TOTAL UNIT AREA	38.99 m²	420 ft²

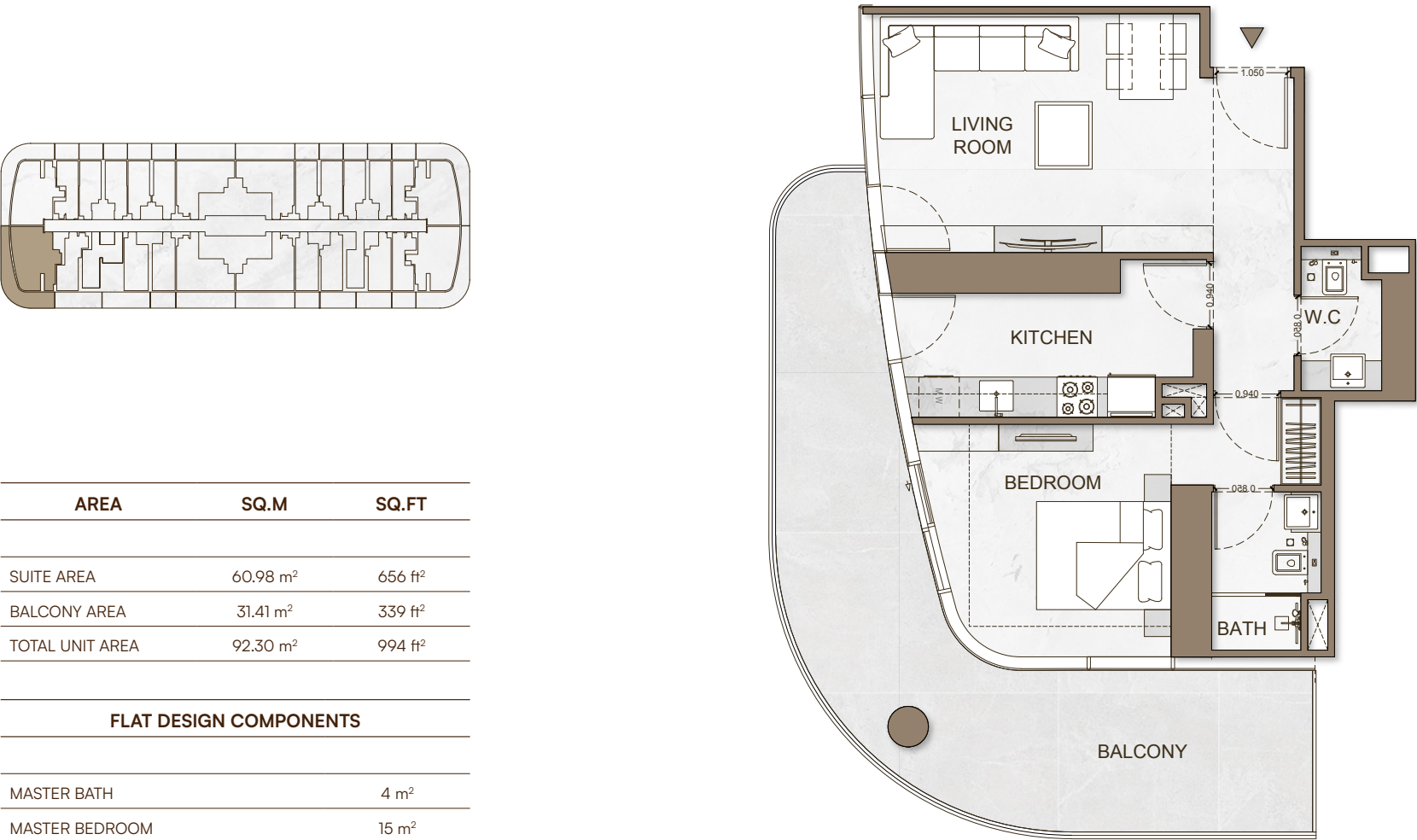
FLAT DESIGN COMPONENTS		
MASTER BATH		4 m²
MASTER BEDROOM		15 m²
LIVING & DINING		7 m²



FLOOR PLAN

1 BEDROOM

TYPE - 1



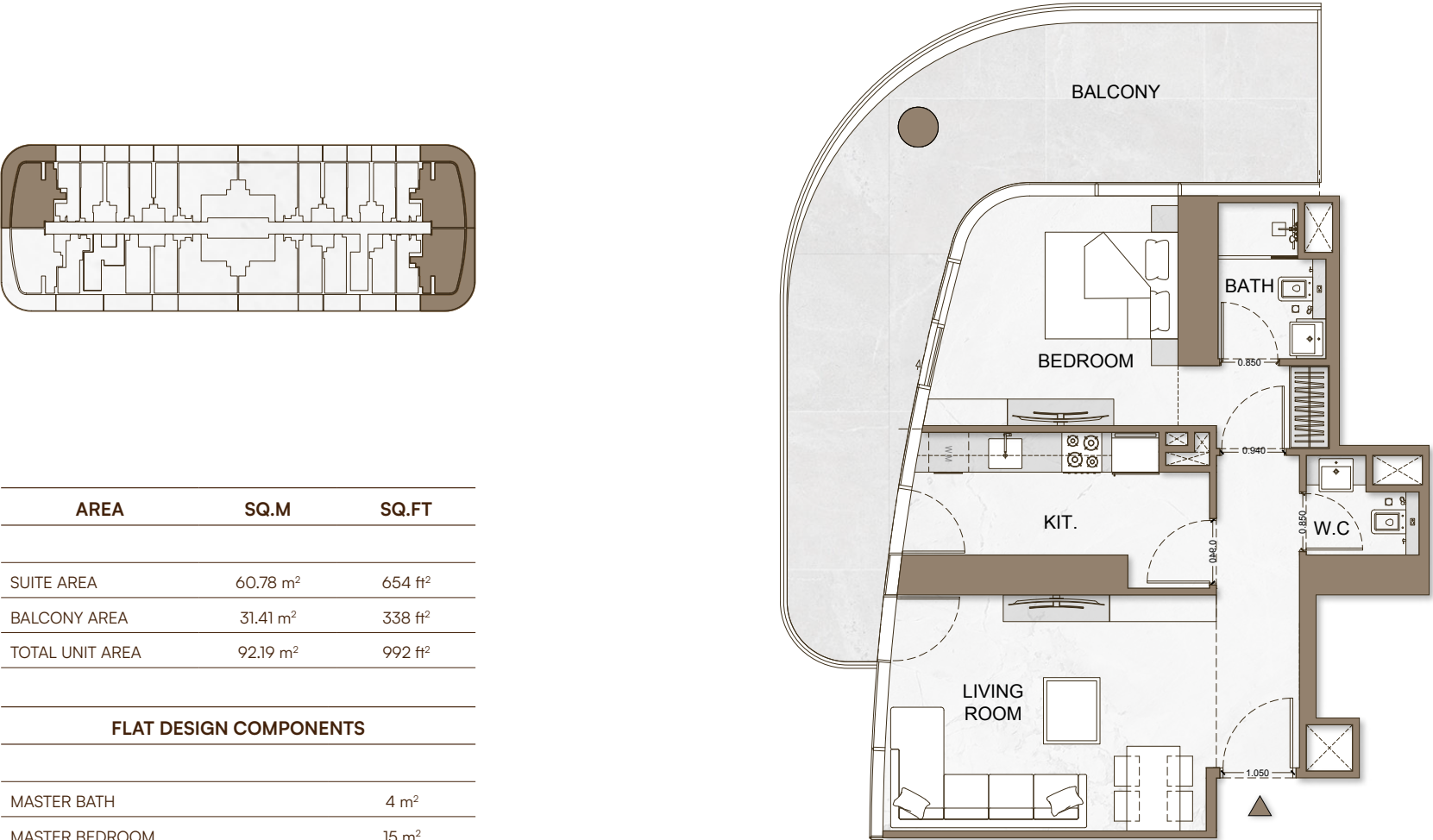
AREA	SQ.M	SQ.FT
SUITE AREA	60.98 m²	656 ft²
BALCONY AREA	31.41 m²	339 ft²
TOTAL UNIT AREA	92.30 m²	994 ft²

FLAT DESIGN COMPONENTS		
MASTER BATH		4 m²
MASTER BEDROOM		15 m²
LIVING & DINING		18 m²
KITCHEN		9 m²
W.C		3 m²
CORRIDOR		6 m²

FLOOR PLAN

1 BEDROOM

TYPE - 2



AREA	SQ.M	SQ.FT
SUITE AREA	60.78 m²	654 ft²
BALCONY AREA	31.41 m²	338 ft²
TOTAL UNIT AREA	92.19 m²	992 ft²

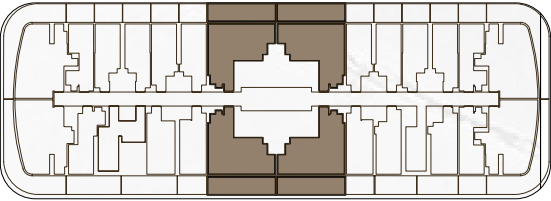
FLAT DESIGN COMPONENTS		
MASTER BATH		4 m²
MASTER BEDROOM		15 m²
LIVING & DINING		17 m²
KITCHEN		9 m²
W.C		2 m²
CORRIDOR		6 m²

Disclaimer: 1. All stated dimensions and services whether in relation to the building, common areas or individual units are subject to government and local authority approvals. Final dimensions and services will be stated in your sales and purchase agreement 2. All room dimensions are measured to structural elements and exclude wall finishes and construction tolerances. 3. All dimensions have been provided by our consultant architects. 4. All materials, dimensions and drawings are approximate. Information is subject to change without notice. 5. Actual suite area may vary from the stated area. Drawings are not to scale. The Developer reserves the right to make any revisions whatsoever including for aesthetic purposes.

6. Calculation of suite area is measured as the area bounded by the centre line of demising or partition walls separating one unit from another unit, the exterior face of all exterior walls, and the exterior face of the corridor wall enclosing the adjoining unit. 7. Calculation of balcony area is measured as the area bounded by the centre line of demising or partition walls separating one unit from another unit, the outmost face of the enclosing guard and the external face of the adjoining balcony. 8. The units are measured at typical floor in the building. Columns may vary in size depending on the floor level. 9. For each unit type, unit sizes and details might be different and your sales and purchase agreement will contain the actual size of each specific unit.

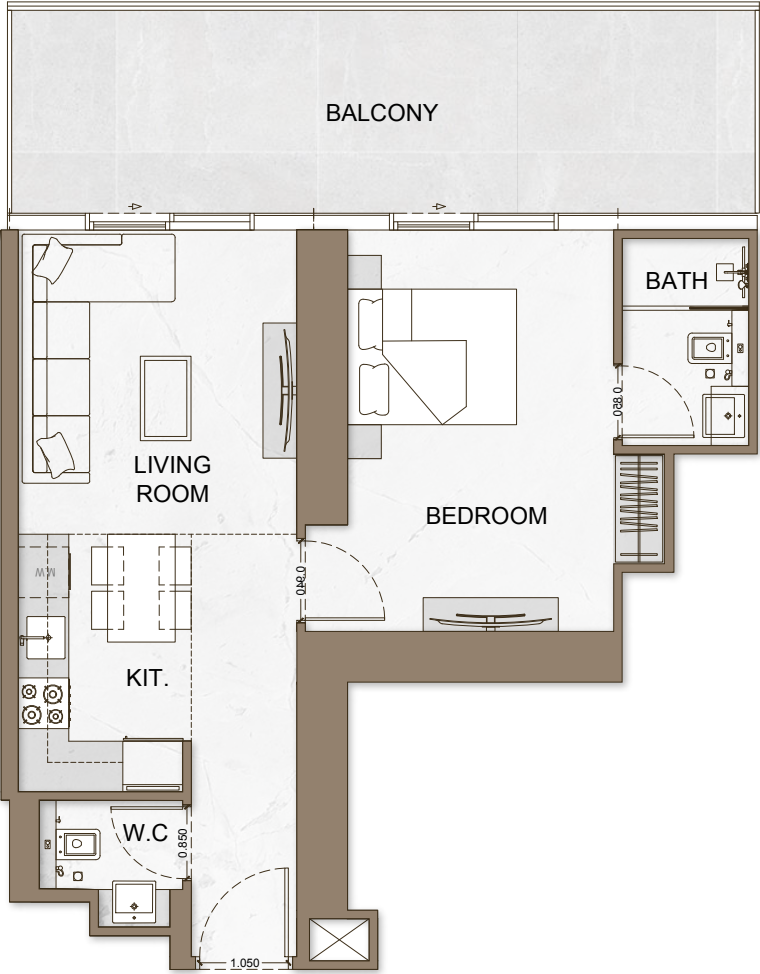
1 BEDROOM

TYPE - 3



AREA	SQ.M	SQ.FT
SUITE AREA	54.22 m²	584 ft²
BALCONY AREA	22.46 m²	242 ft²
TOTAL UNIT AREA	76.68 m²	825 ft²

FLAT DESIGN COMPONENTS		
MASTER BATH		4 m²
MASTER BEDROOM		16 m²
LIVING & DINING		12 m²
KITCHEN		6 m²
W.C		2 m²
CORRIDOR		6 m²



Disclaimer: 1. All stated dimensions and services whether in relation to the building, common areas or individual units are subject to government and local authority approvals. Final dimensions and services will be stated in your sales and purchase agreement 2. All room dimensions are measured to structural elements and exclude wall finishes and construction tolerances. 3. All dimensions have been provided by our consultant architects. 4. All materials, dimensions and drawings are approximate. Information is subject to change without notice. 5. Actual suite area may vary from the stated area. Drawings are not to scale. The Developer reserves the right to make any revisions whatsoever including for aesthetic purposes.

6. Calculation of suite area is measured as the area bounded by the centre line of demising or partition walls separating one unit from another unit, the exterior face of all exterior walls, and the exterior face of the corridor wall enclosing the adjoining unit. 7. Calculation of balcony area is measured as the area bounded by the centre line of demising or partition walls separating one unit from another unit, the outmost face of the enclosing guard and the external face of the adjoining balcony. 8. The units are measured at typical floor in the building. Columns may vary in size depending on the floor level. 9. For each unit type, unit sizes and details might be different and your sales and purchase agreement will contain the actual size of each specific unit.



hoûsebook Real Estate Company
since 2012 in the UAE

+971 (4) 412-5007

Managers of partnerships



Alevtina Kapustina



Svetlana Guseva

Office

Housebook Real Estate LCC

Dubai Marina, office 2502-01, Dubai, UAE

Company license: 1128098

ae.housebook.deals

partner@housebook.ae

