
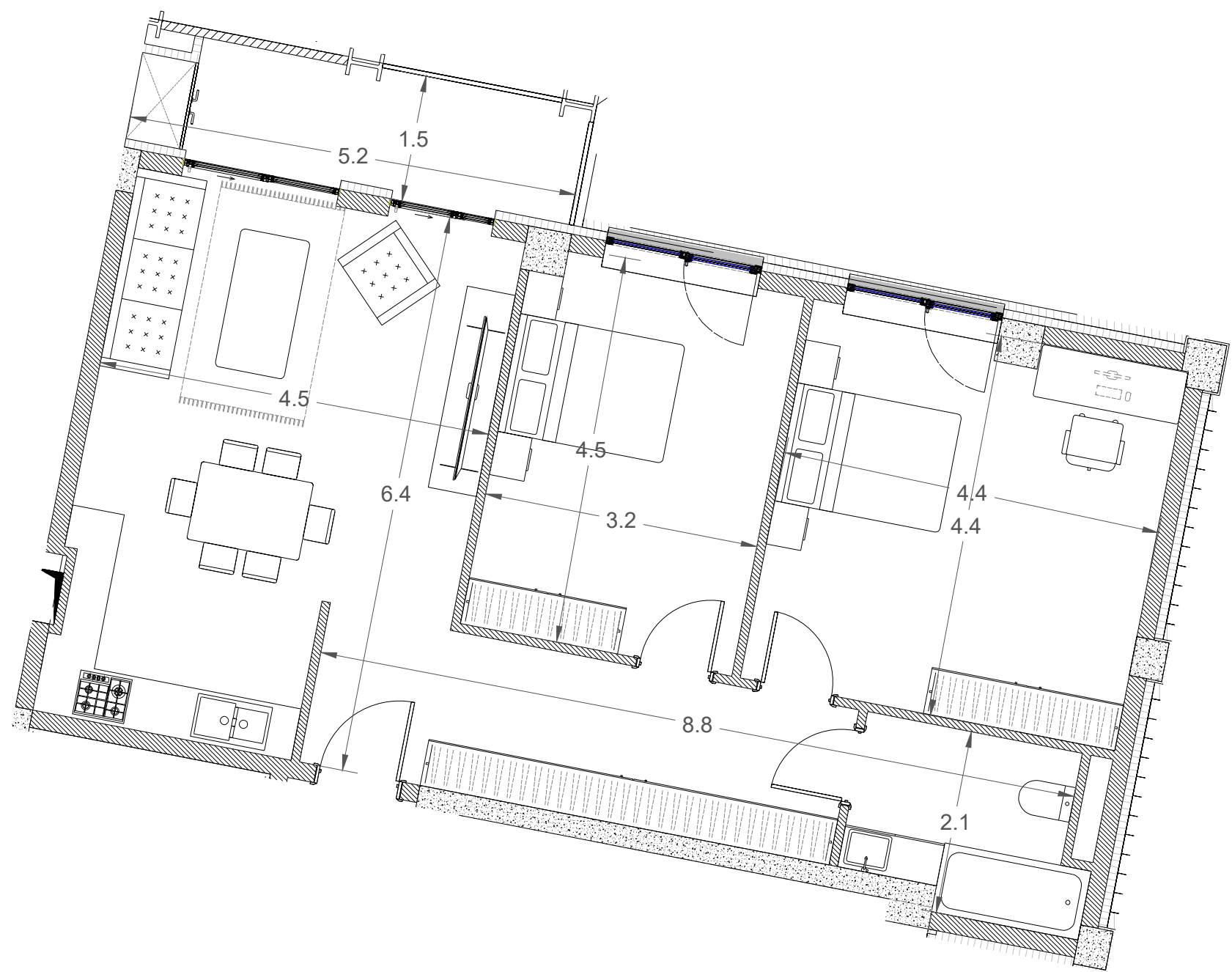


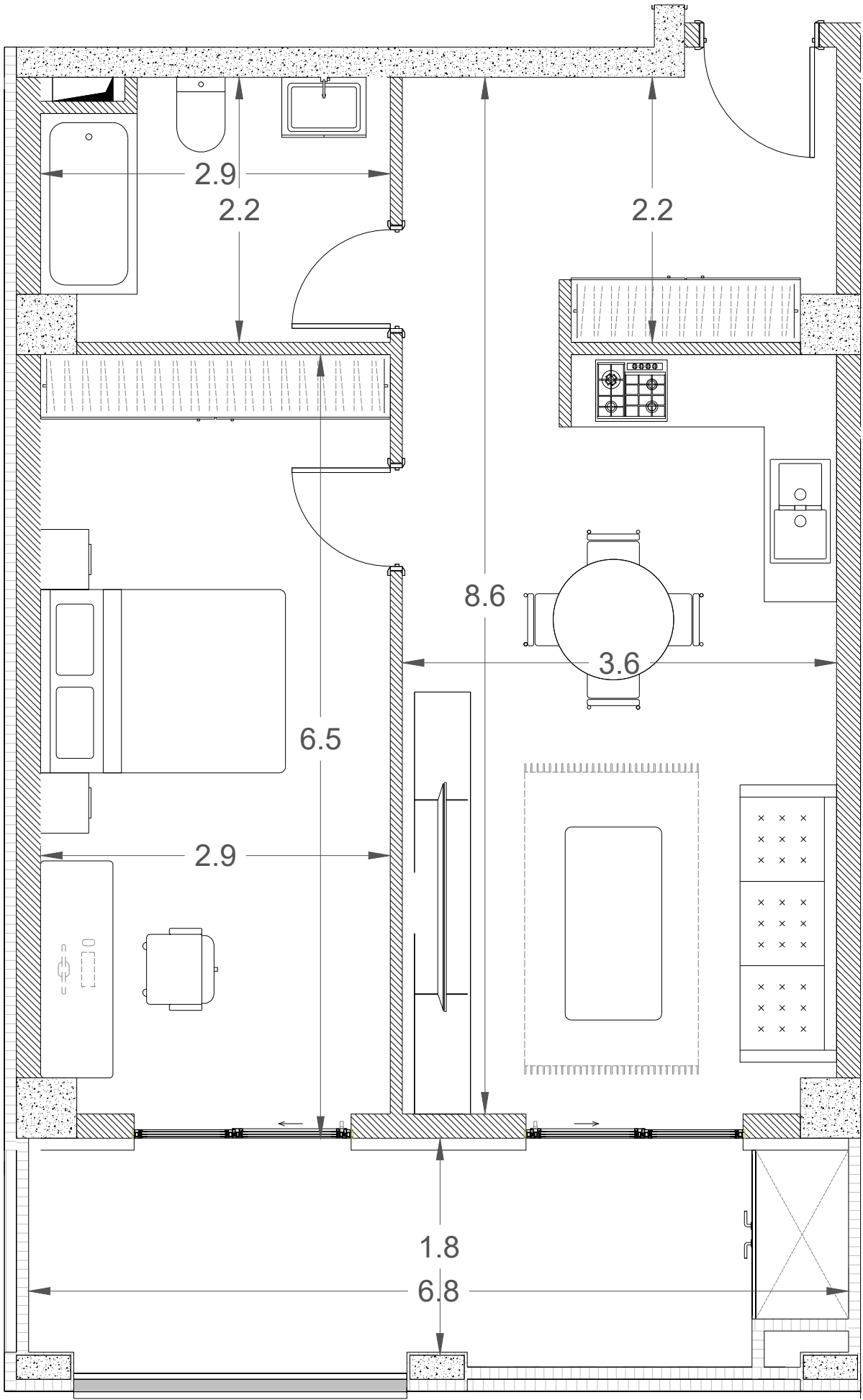
TBILISI DOWNTOWN

NEXT |  REALTY

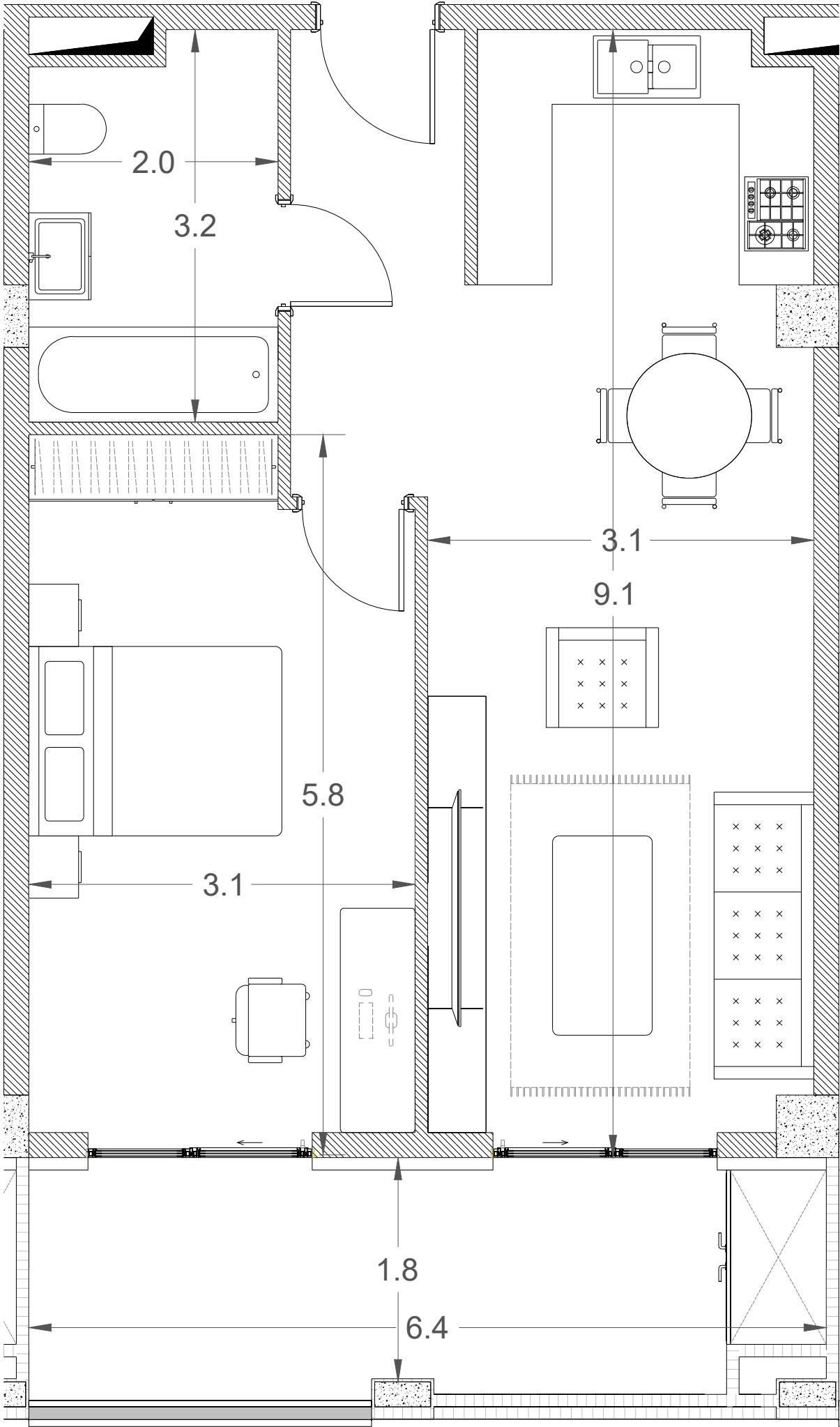
APARTMENT	#C- 03
LIVING AREA	76.3 M2
BALCONY	6.9 M2
TOTAL	83.8 M2



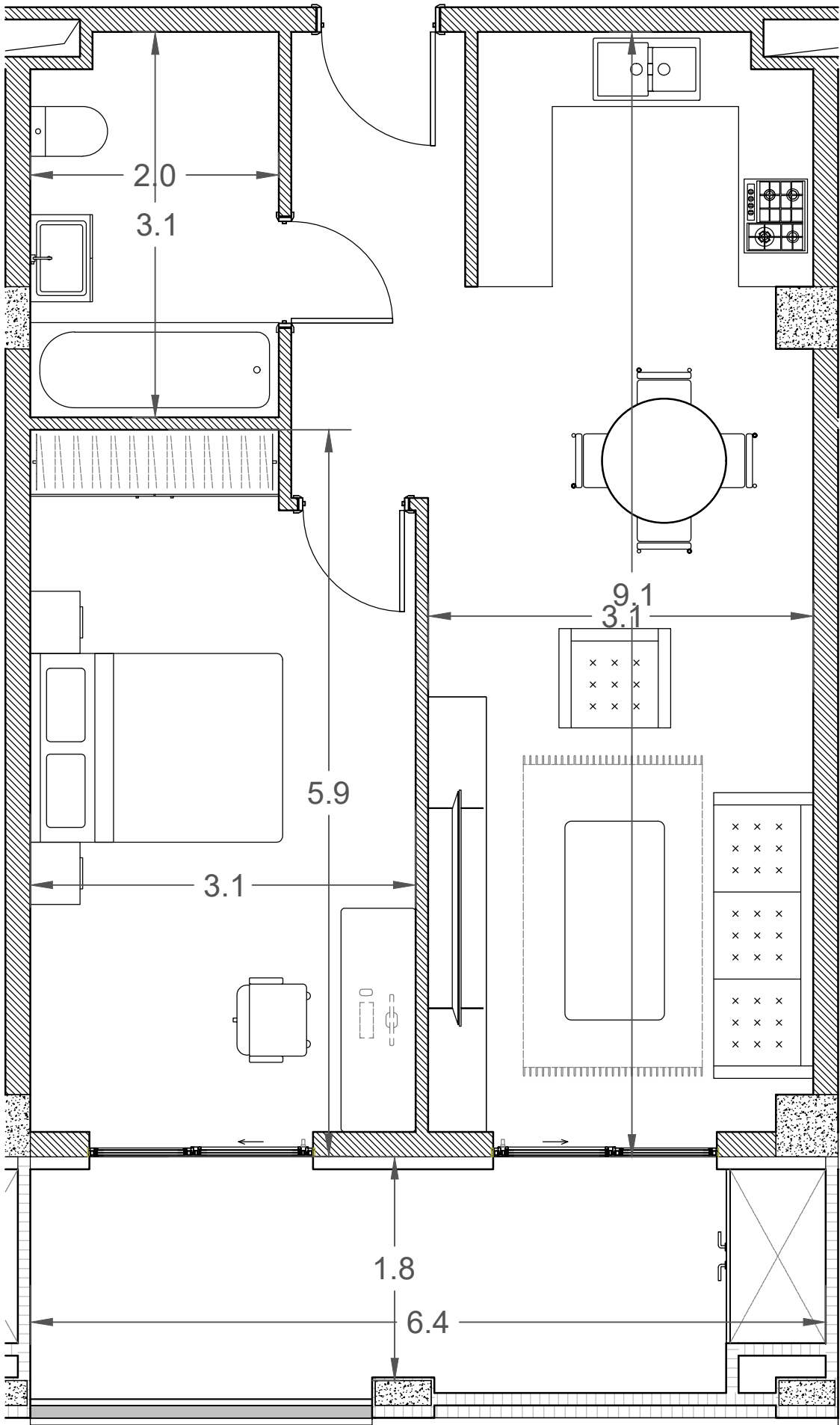
APARTMENT	#A- 01
LIVING AREA	56.4 M2
BALCONY	12.4 M2
TOTAL	68.8 M2



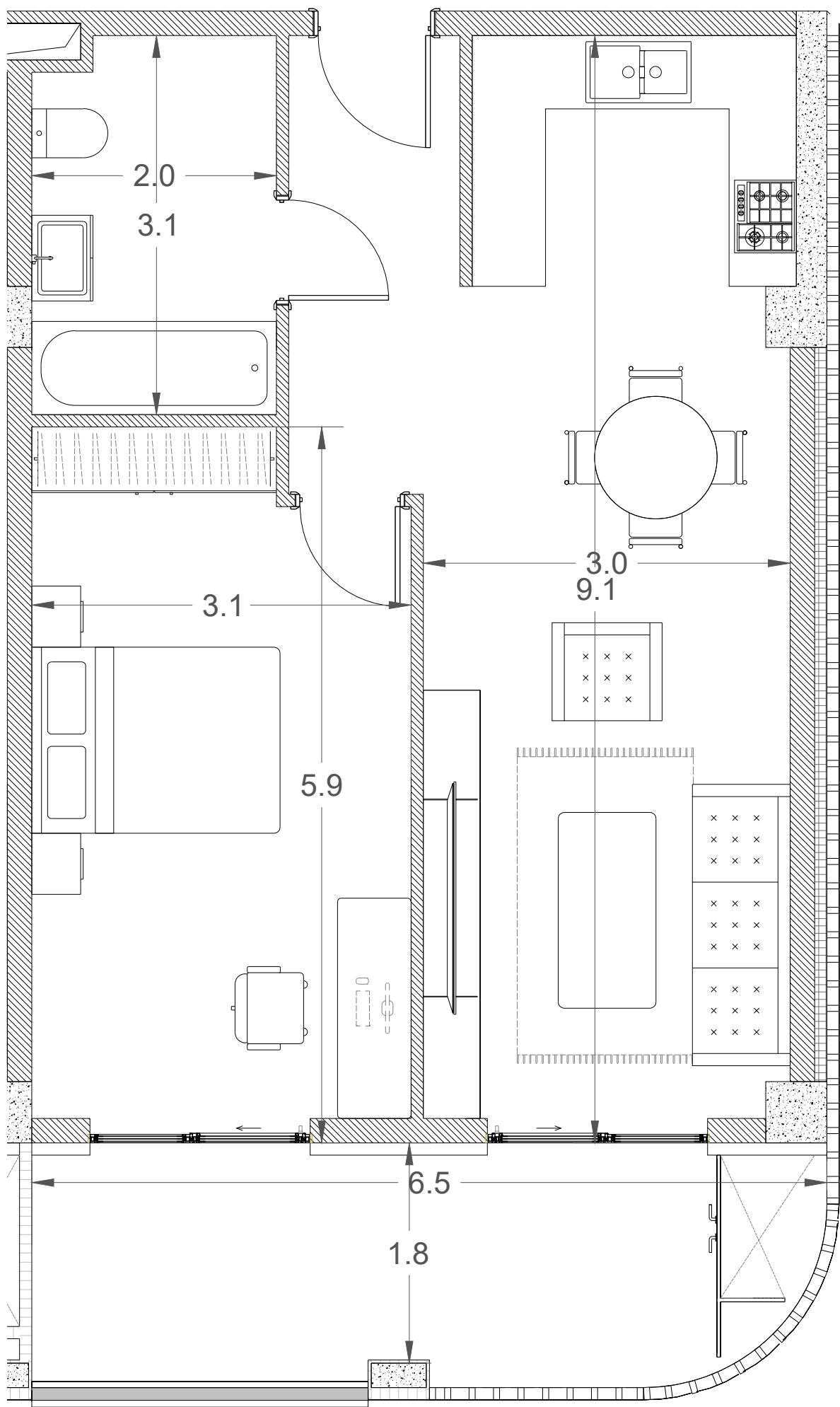
APARTMENT	#A- 02
LIVING AREA	55.0 M2
BALCONY	11.7 M2
TOTAL	66.7 M2



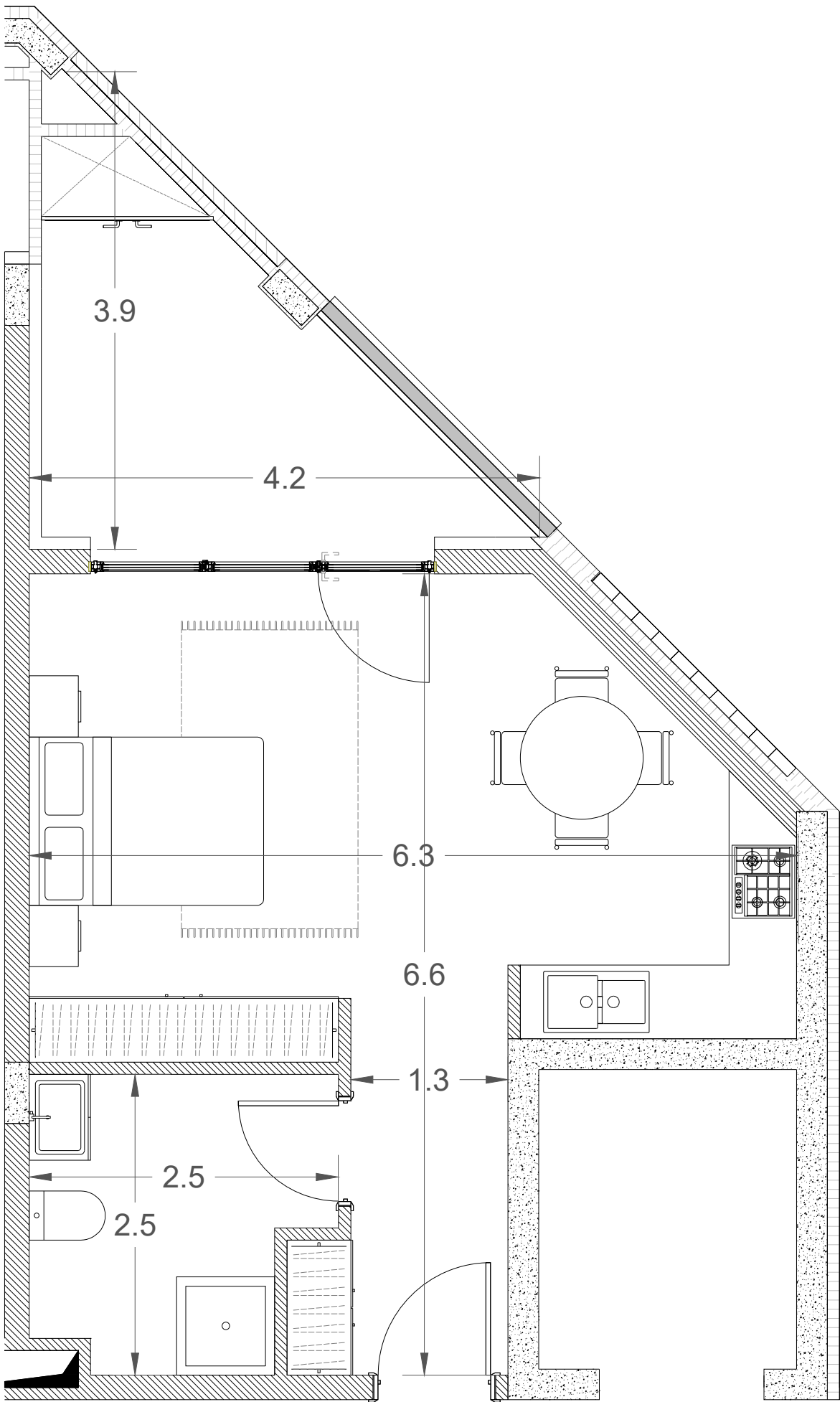
APARTMENT	#A- 03
LIVING AREA	55.2 M2
BALCONY	11.7 M2
TOTAL	66.9 M2



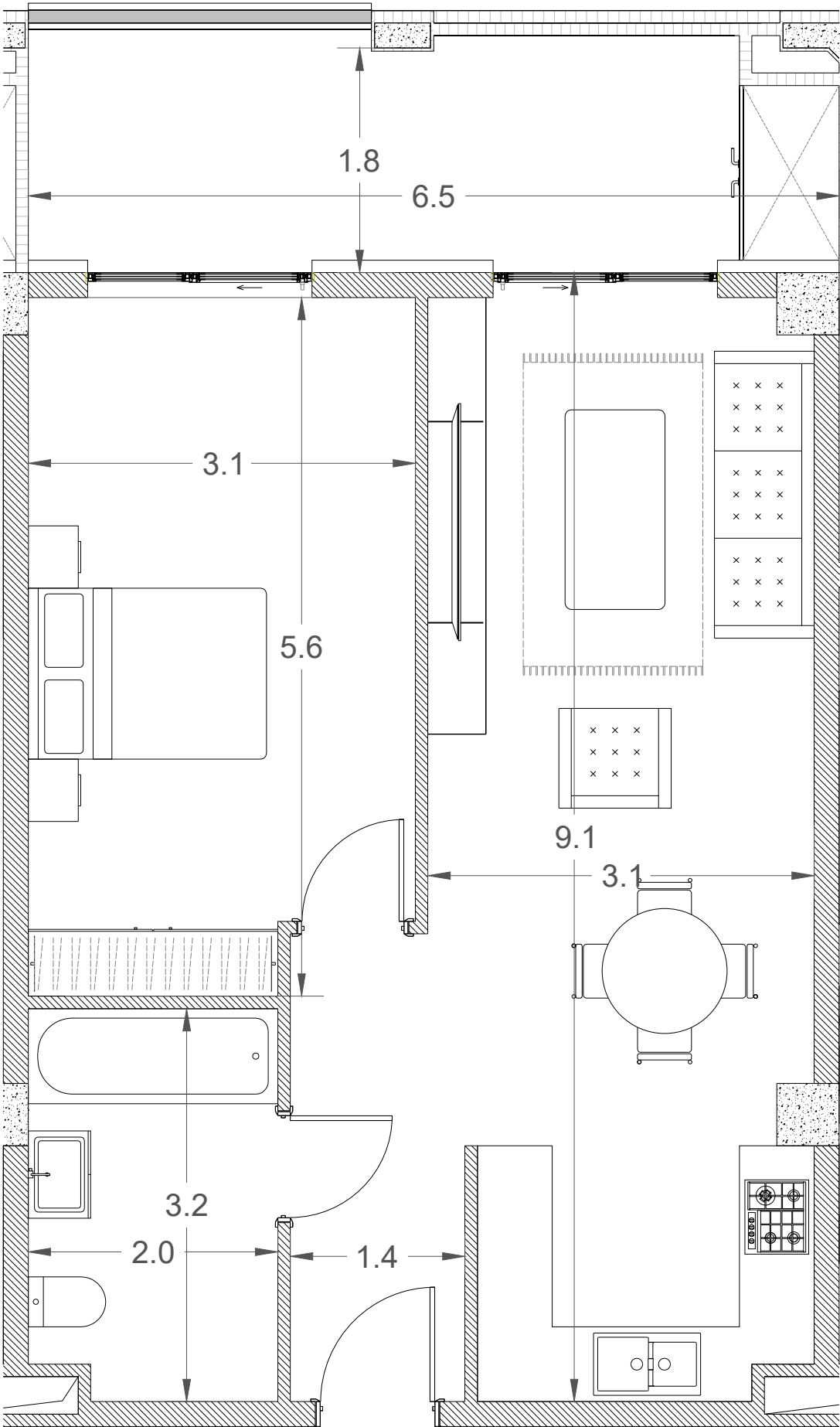
APARTMENT	#A- 04
LIVING AREA	54.7 M2
BALCONY	11.8 M2
TOTAL	66.5 M2



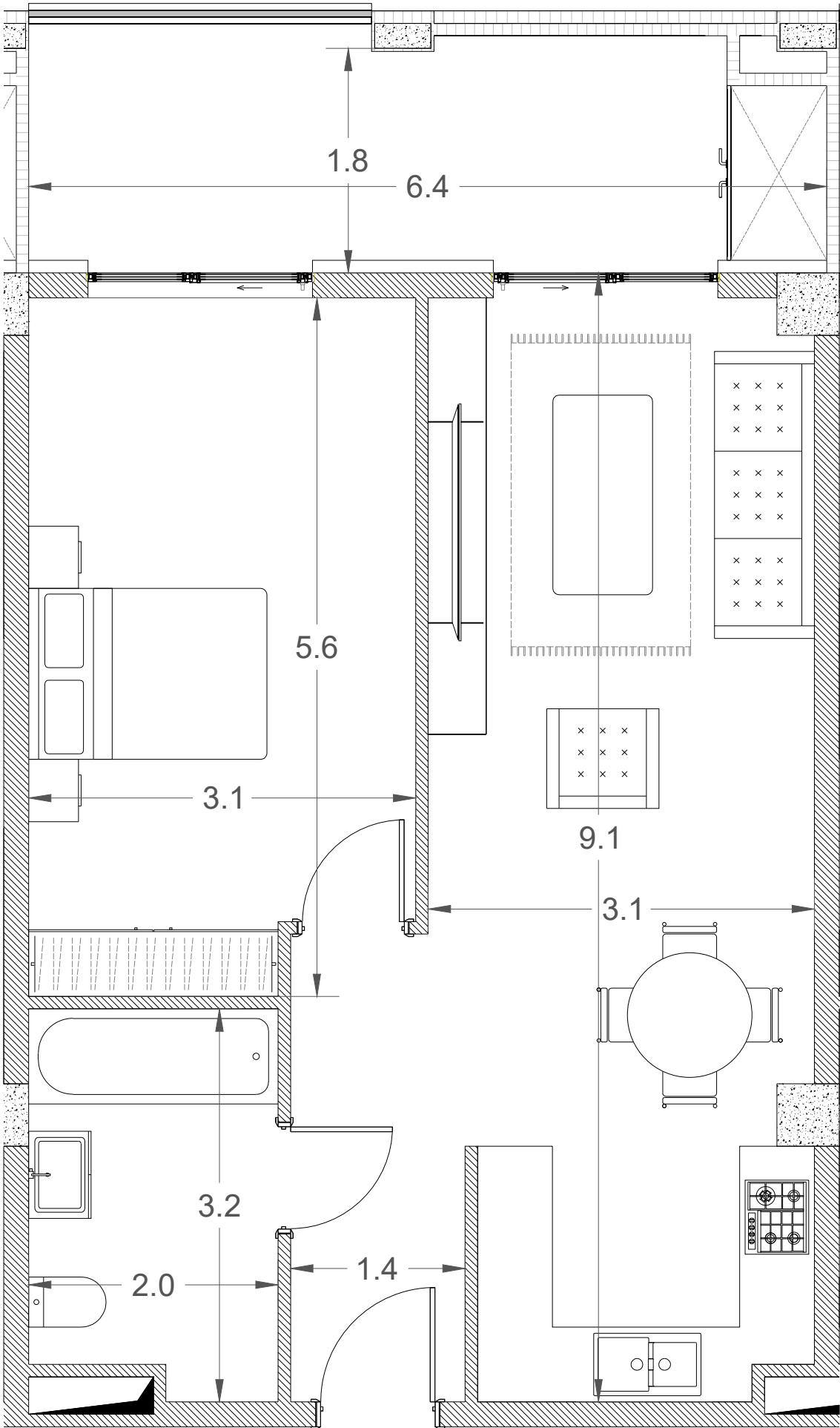
APARTMENT	#A- 05
LIVING AREA	31.9 M2
BALCONY	8.1 M2
TOTAL	40 M2



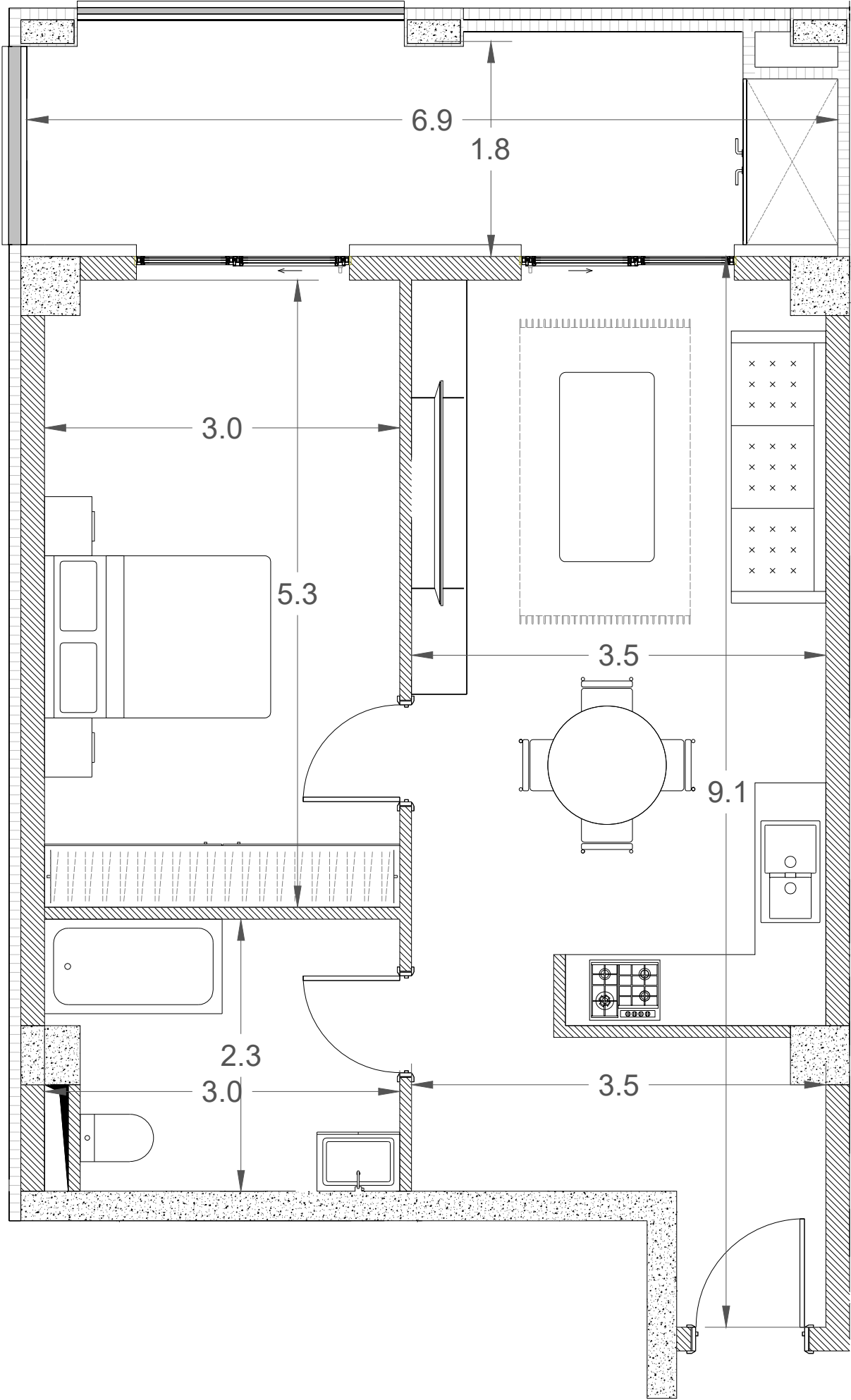
APARTMENT	#A- 06
LIVING AREA	55.2 M2
BALCONY	11.8 M2
TOTAL	67 M2



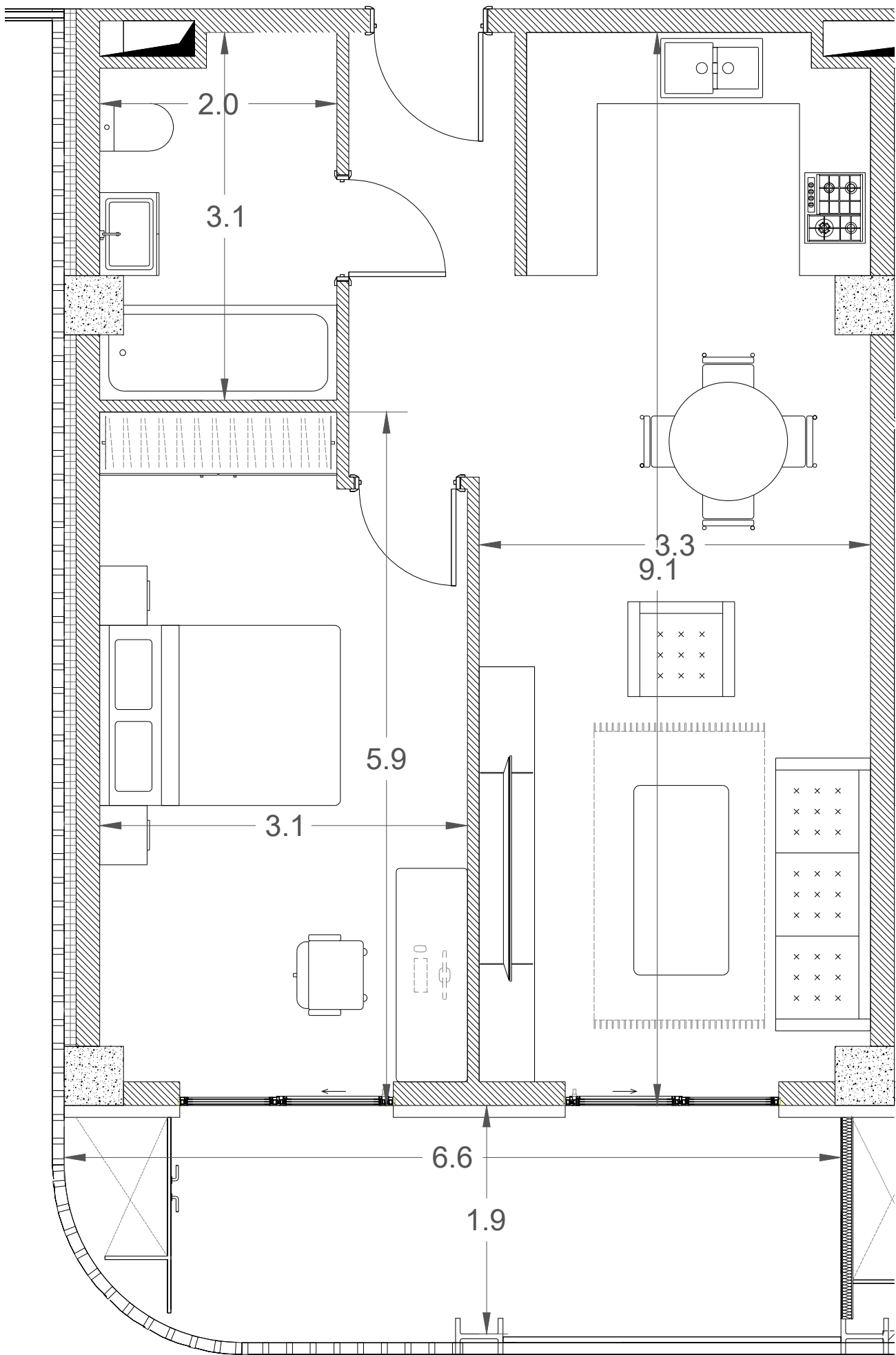
APARTMENT	#A- 07
LIVING AREA	55.0 M2
BALCONY	11.7 M2
TOTAL	66.7 M2



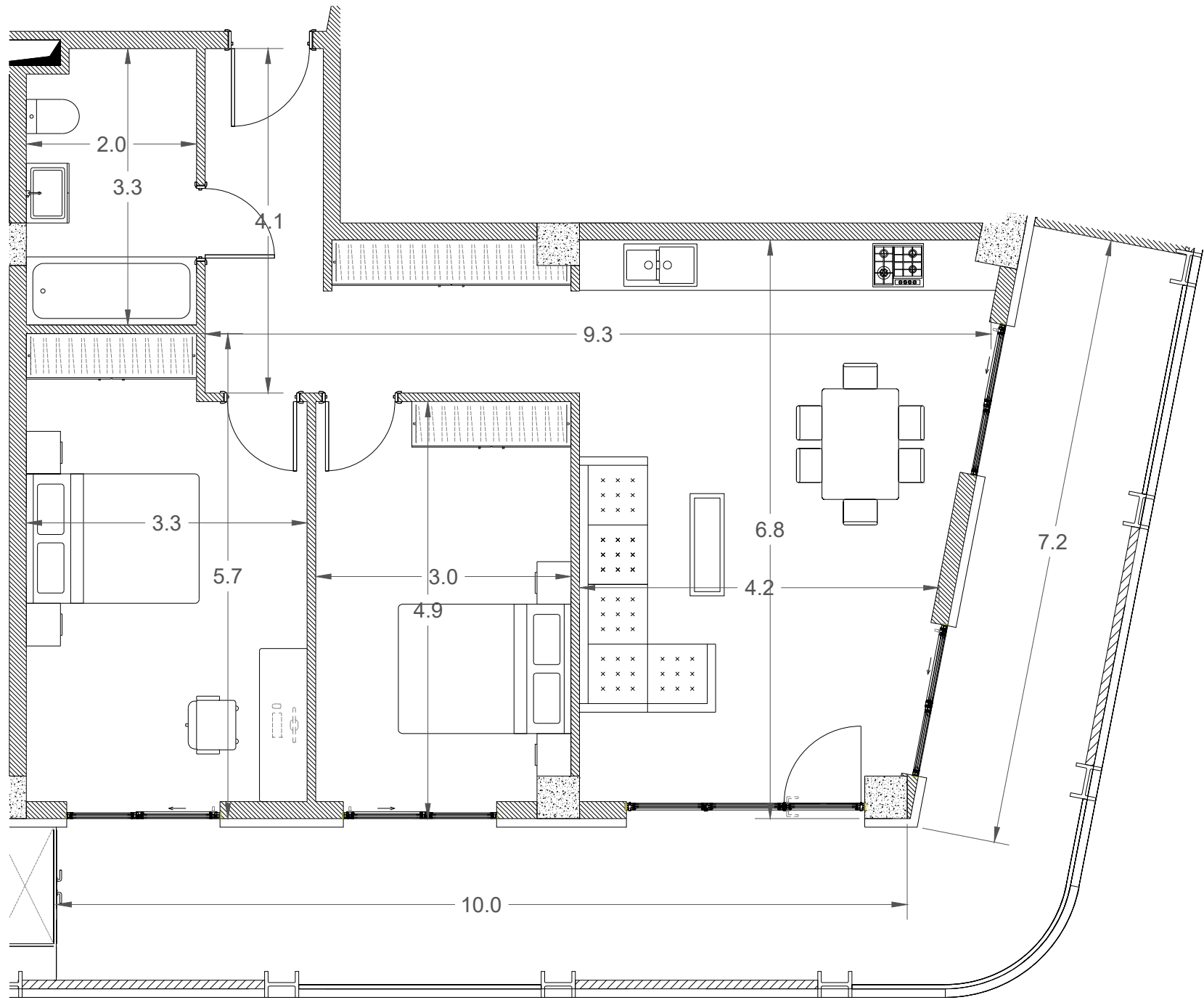
APARTMENT	#A- 08
LIVING AREA	51.5 M2
BALCONY	12.5 M2
TOTAL	64.1 M2



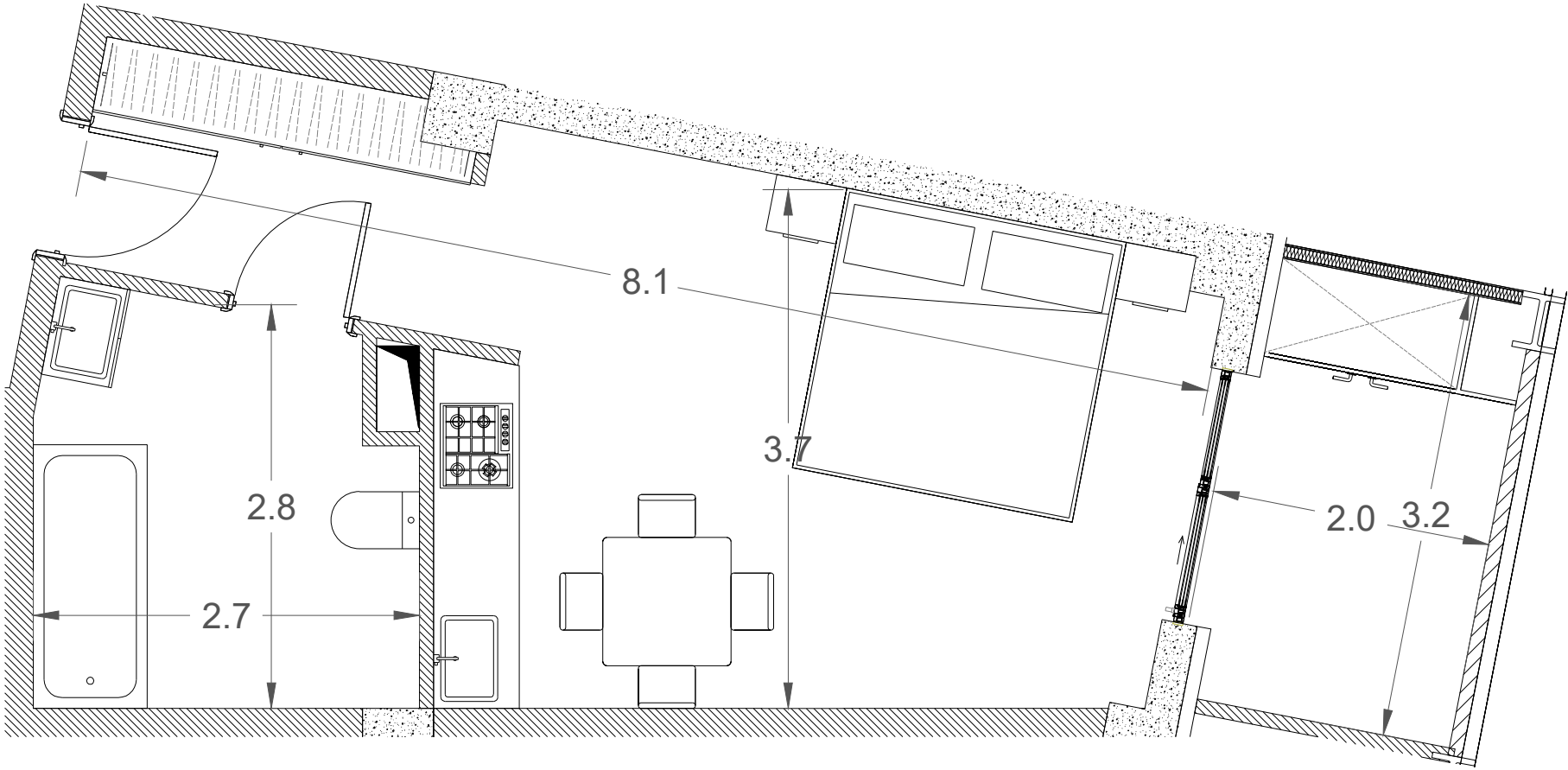
APARTMENT	#B- 01
LIVING AREA	56.7 M2
BALCONY	12.0 M2
TOTAL	68.7 M2



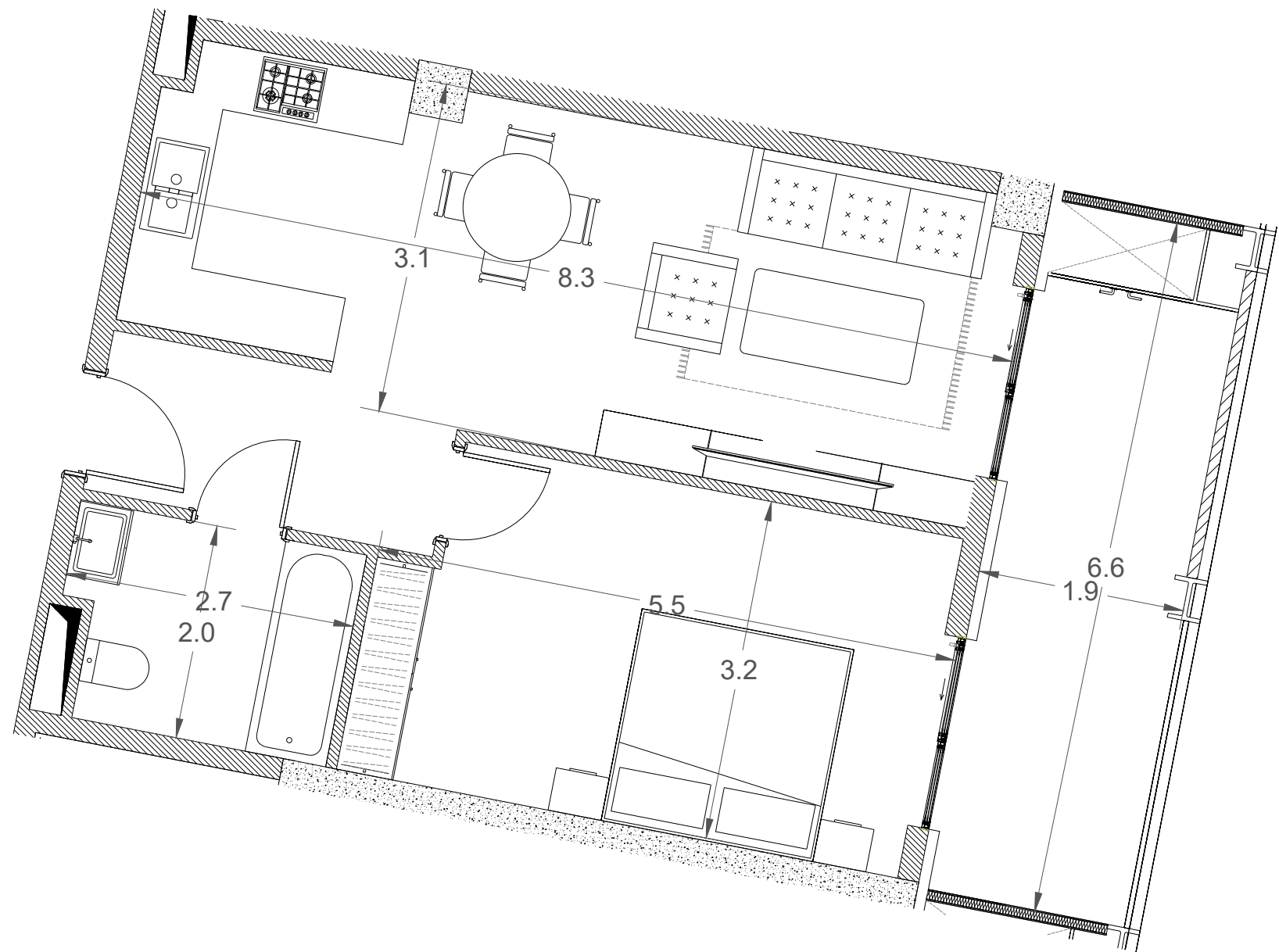
APARTMENT	#B- 02
LIVING AREA	78.9 M2
BALCONY	36.3 M2
TOTAL	115.2M2



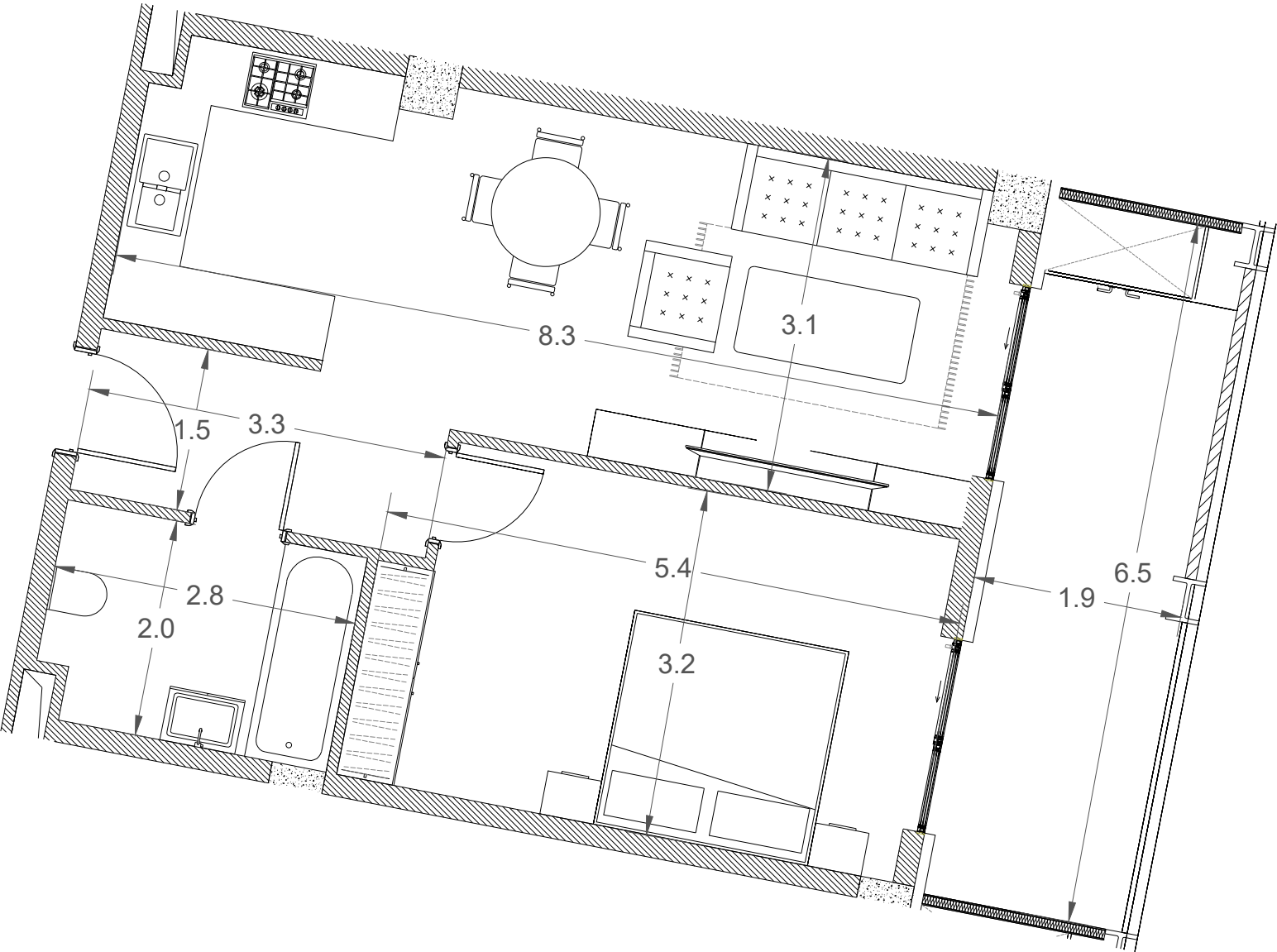
APARTMENT	#B- 03
LIVING AREA	31.0 M2
BALCONY	6.1 M2
TOTAL	37.1 M2



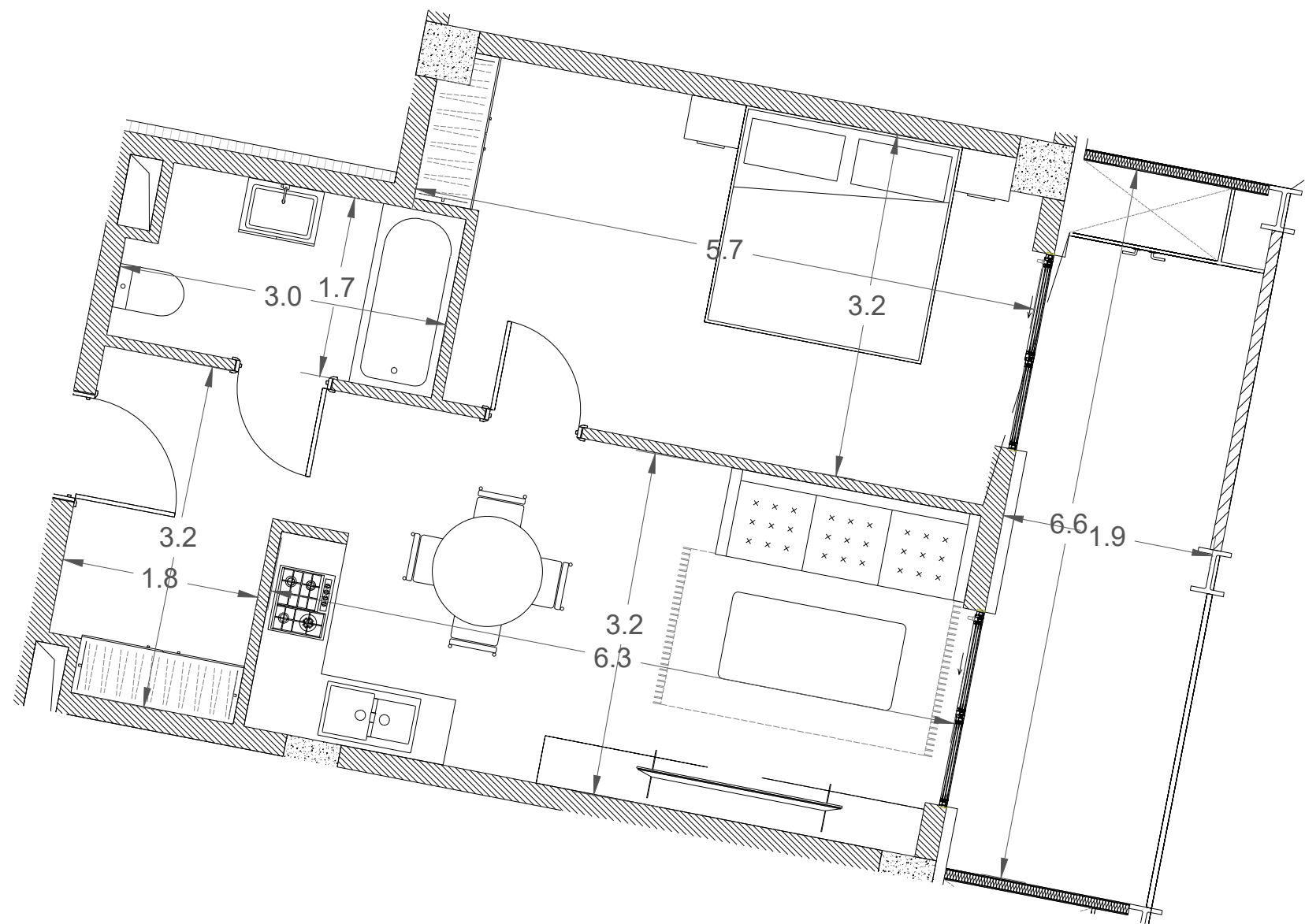
APARTMENT	#B- 04
LIVING AREA	51.1 M2
BALCONY	12.2 M2
TOTAL	63.3 M2



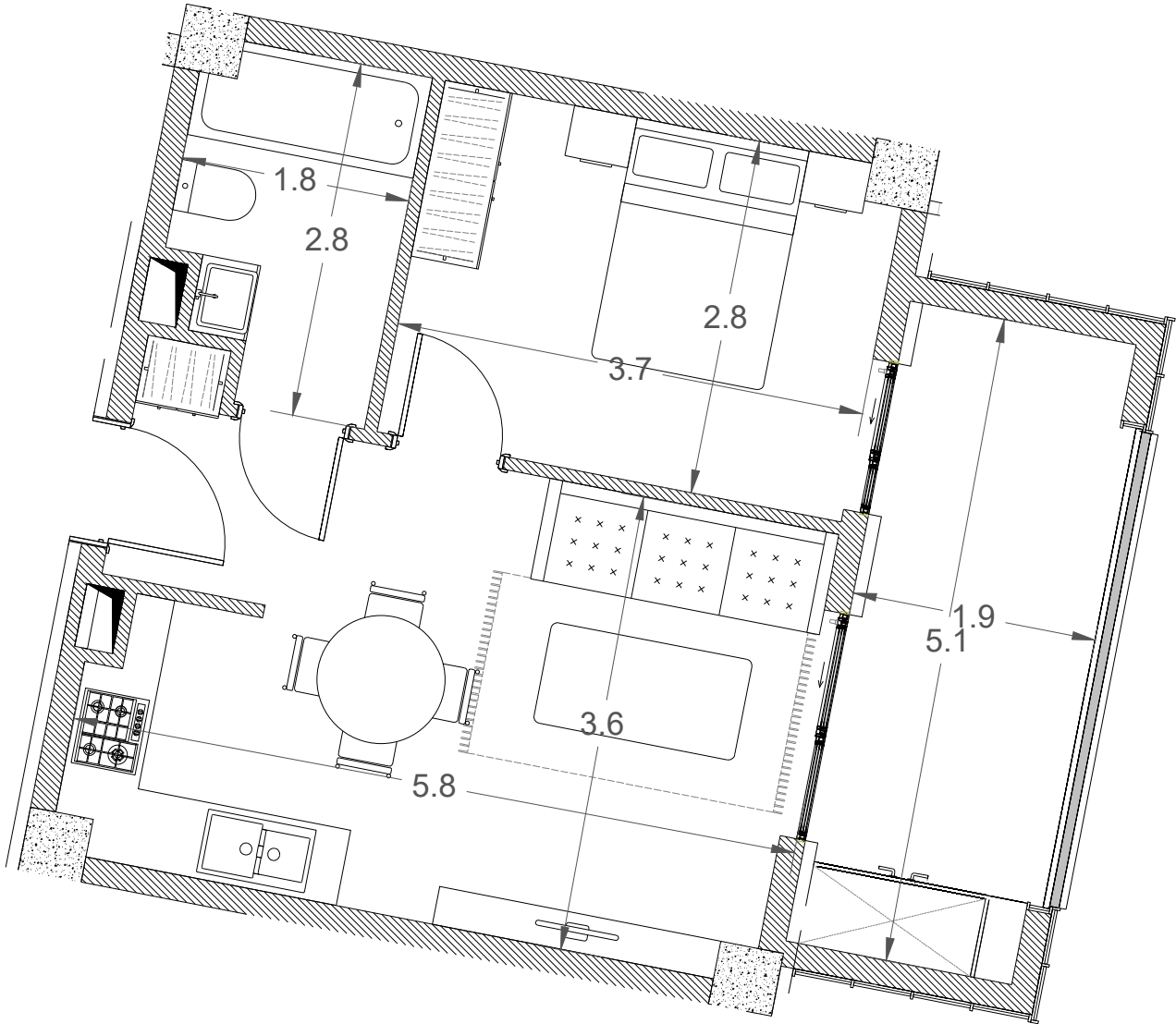
APARTMENT	#B- 05
LIVING AREA	51.3 M2
BALCONY	12.2 M2
TOTAL	63.5 M2



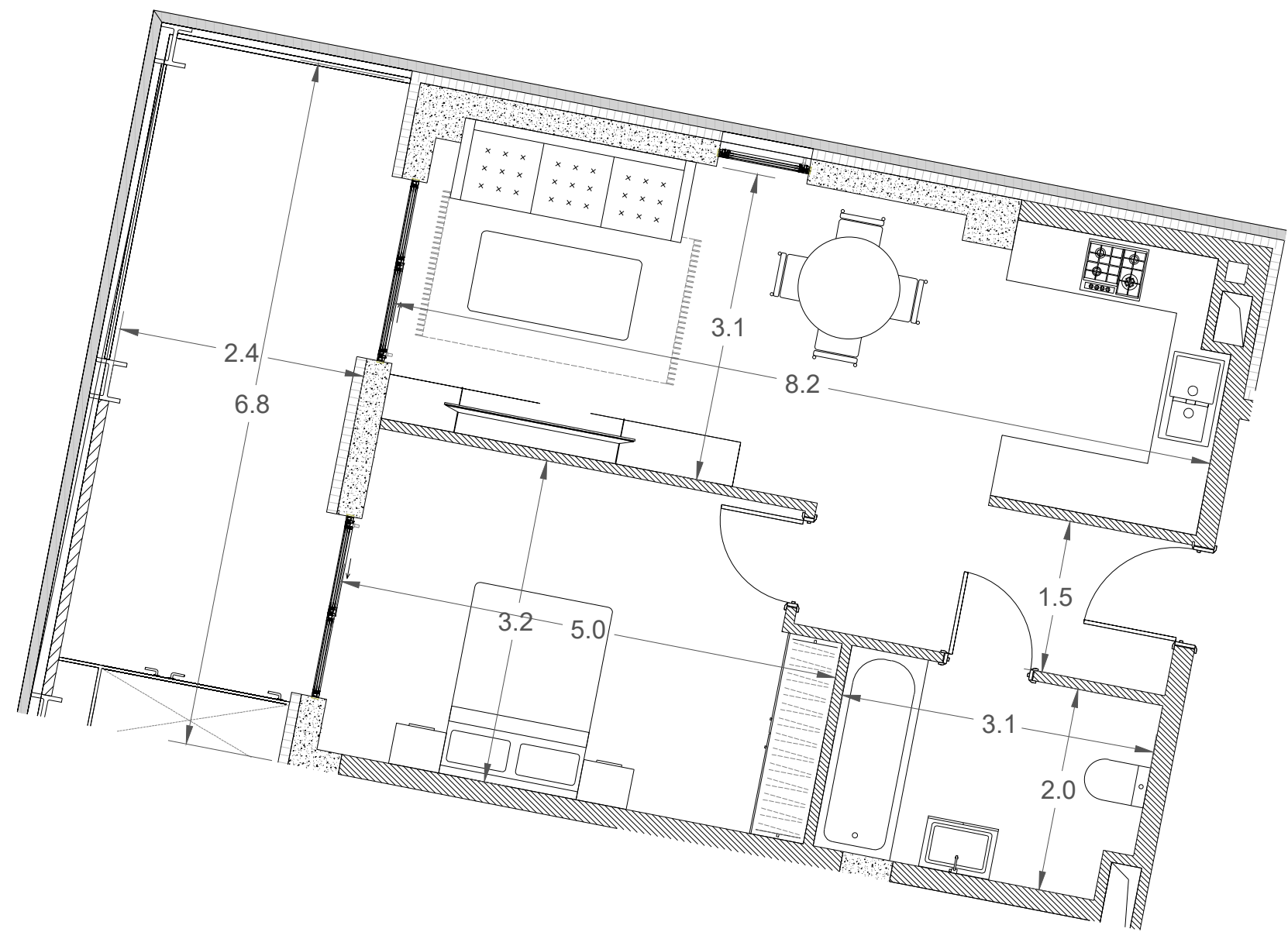
APARTMENT	#B- 06
LIVING AREA	47.5 M2
BALCONY	12.3 M2
TOTAL	59.8 M2



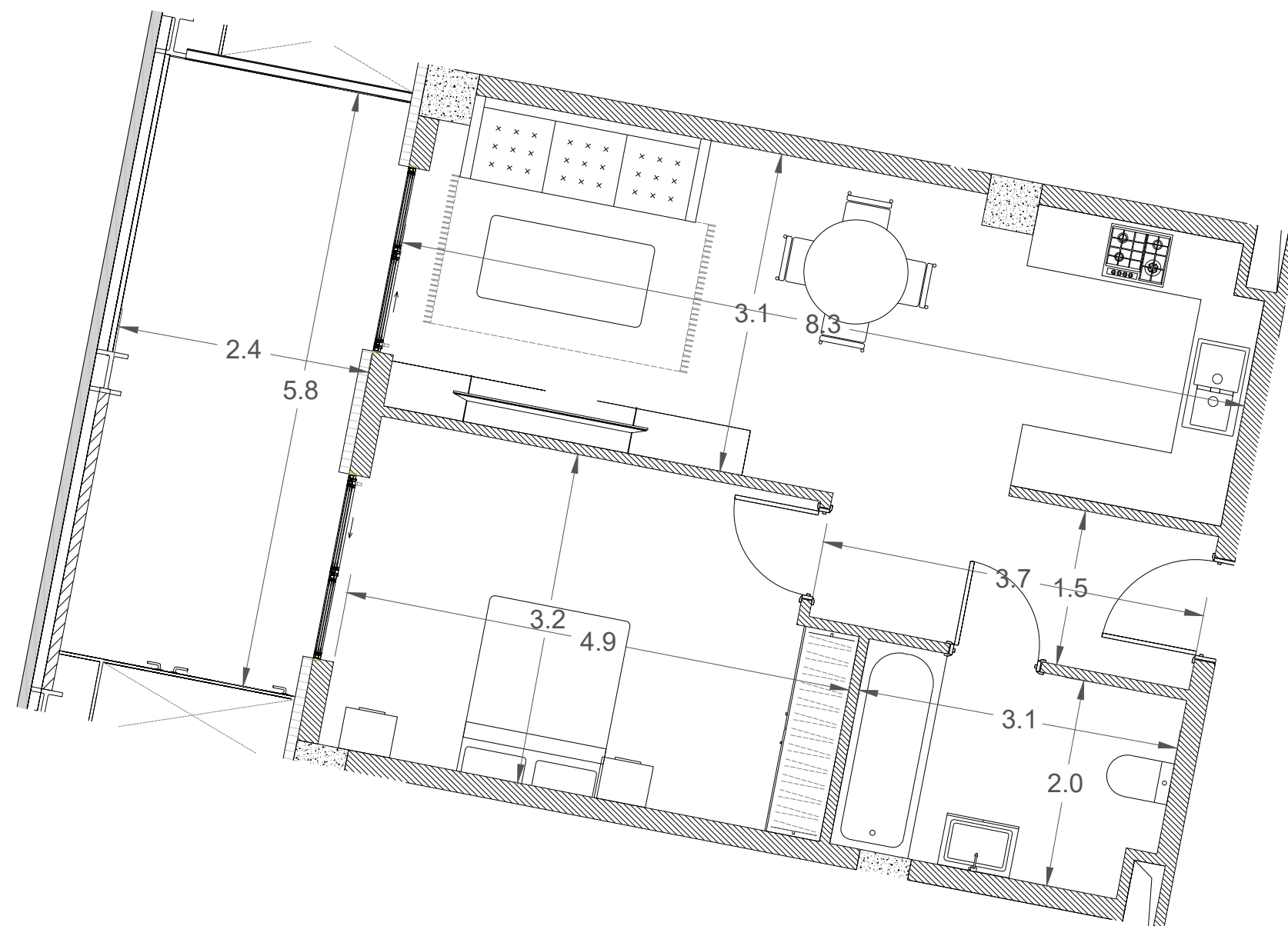
APARTMENT	#B- 07
LIVING AREA	35.6 M2
BALCONY	9.4 M2
TOTAL	45 M2



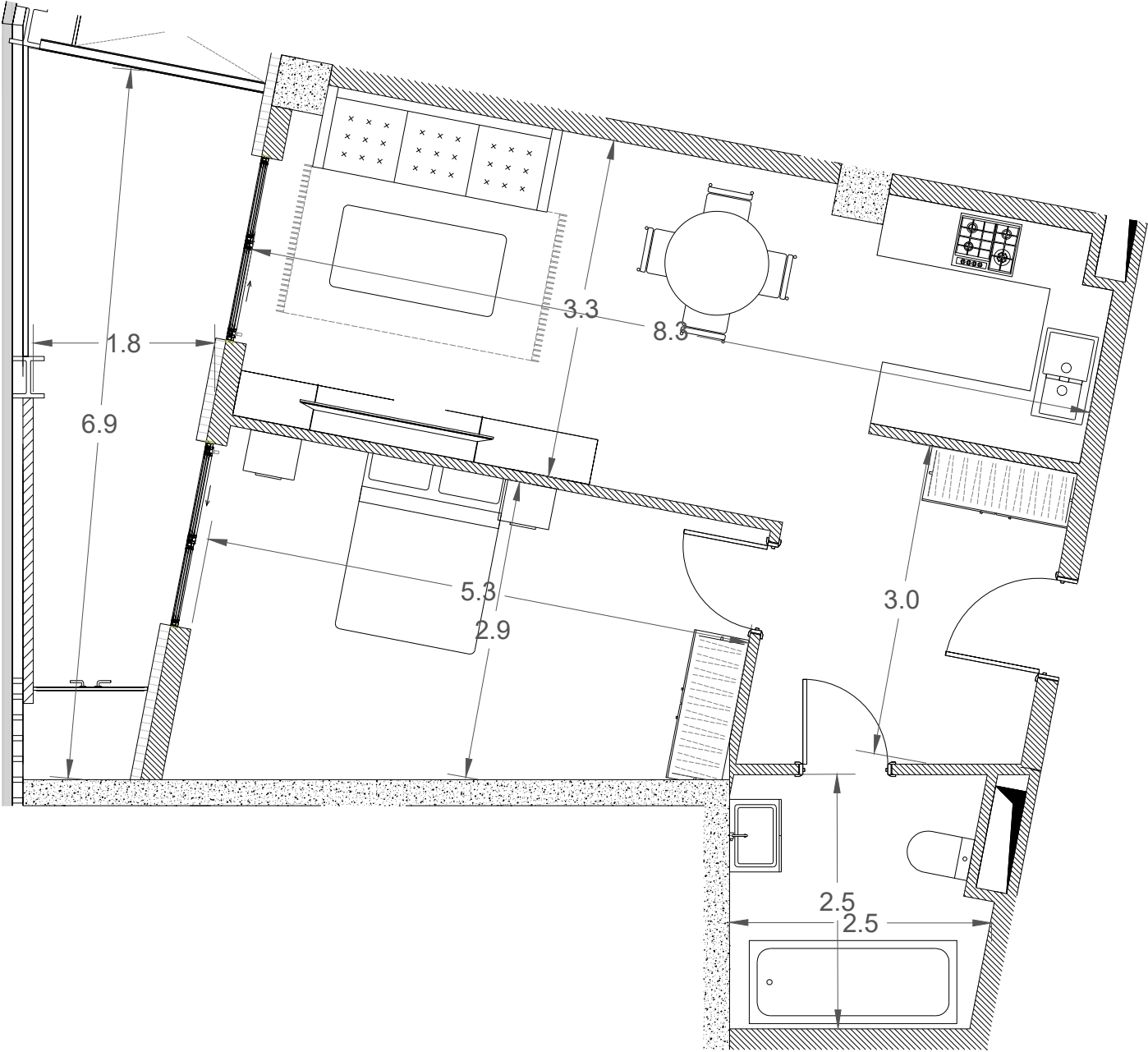
APARTMENT	#B- 08
LIVING AREA	50.6 M2
BALCONY	16.5 M2
TOTAL	67.1 M2



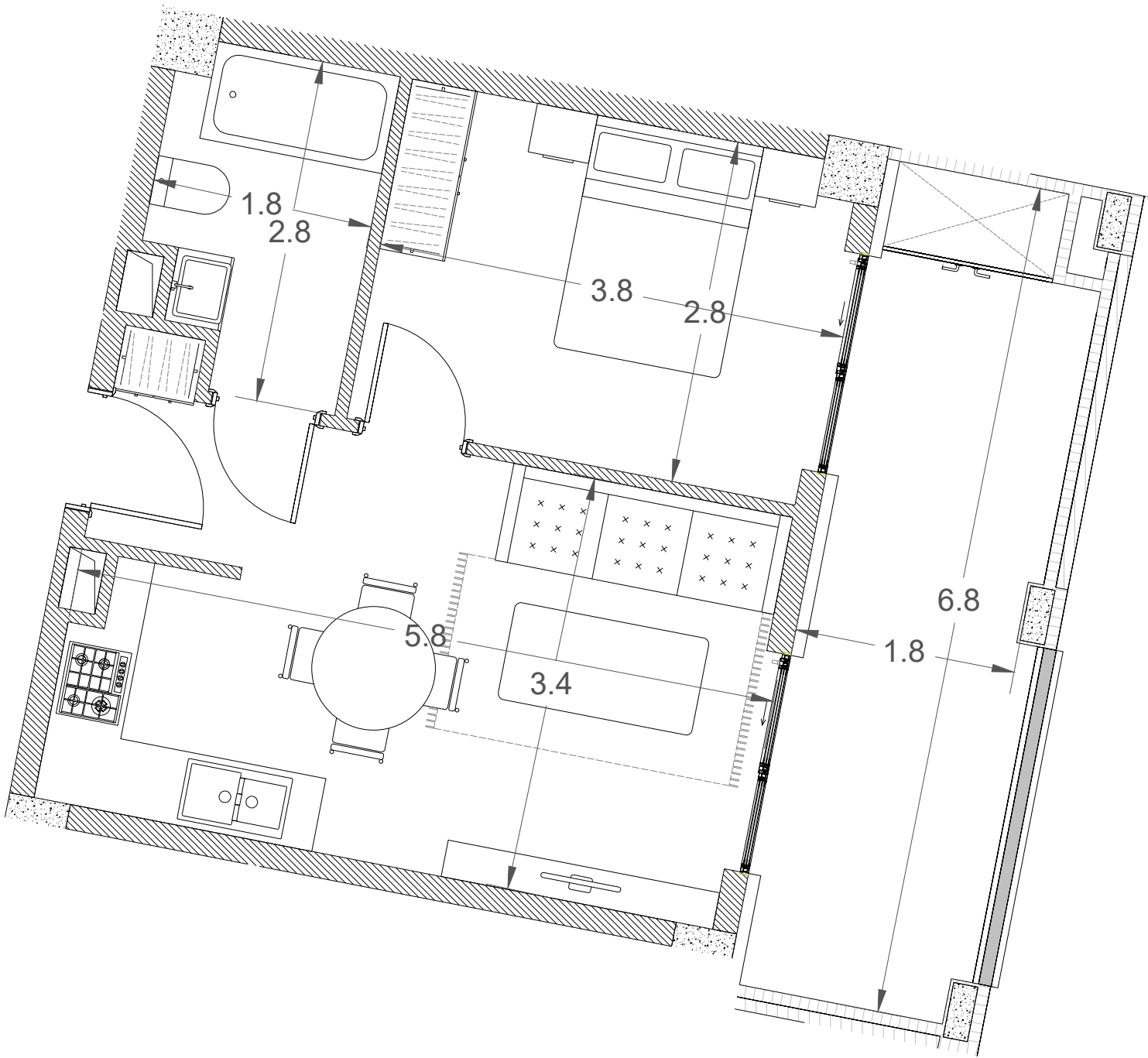
APARTMENT	#B-09
LIVING AREA	51.3 M2
BALCONY	15.5 M2
TOTAL	66.8 M2



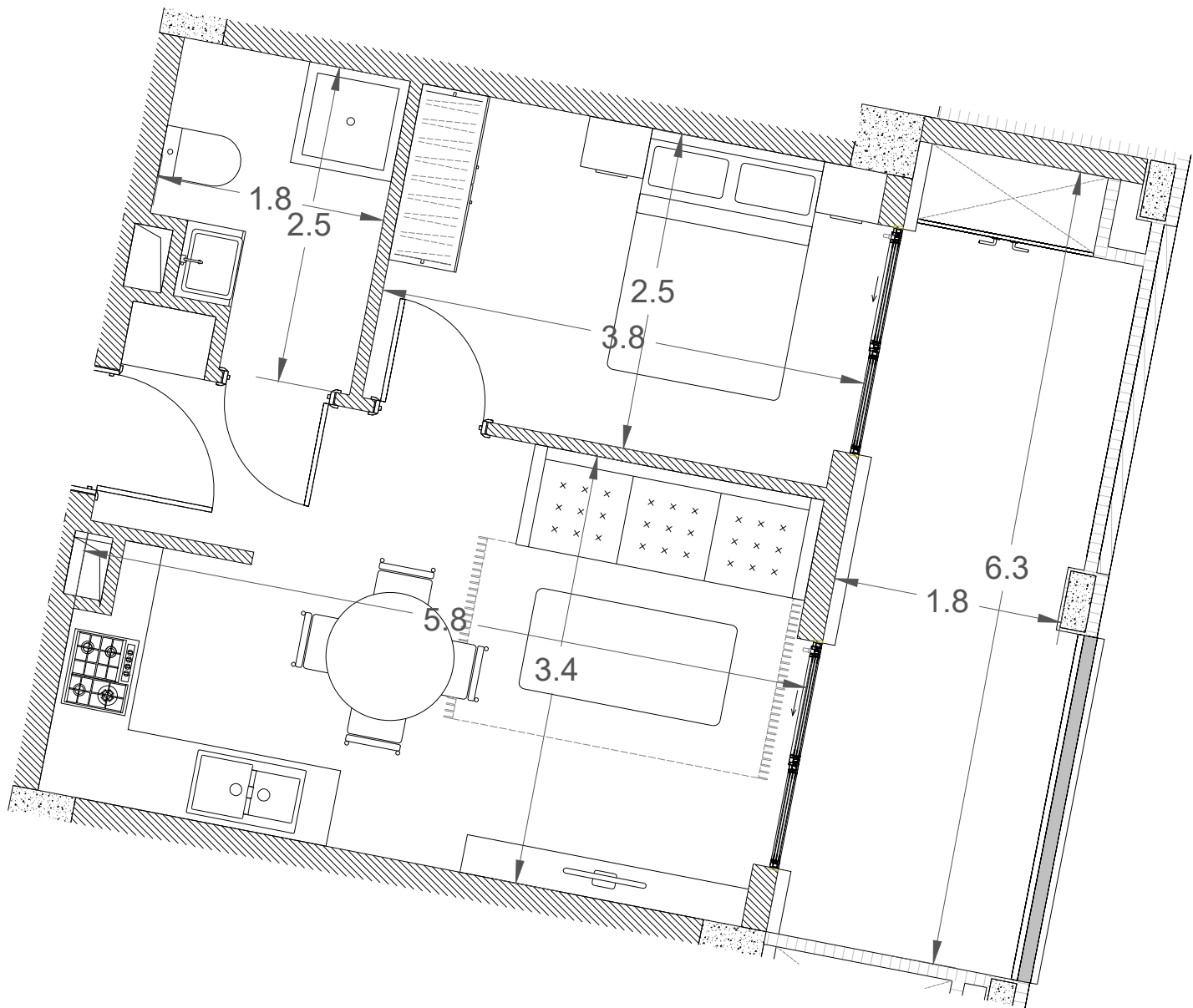
APARTMENT	#B- 10
LIVING AREA	54.6 M2
BALCONY	11.3 M2
TOTAL	66 M2



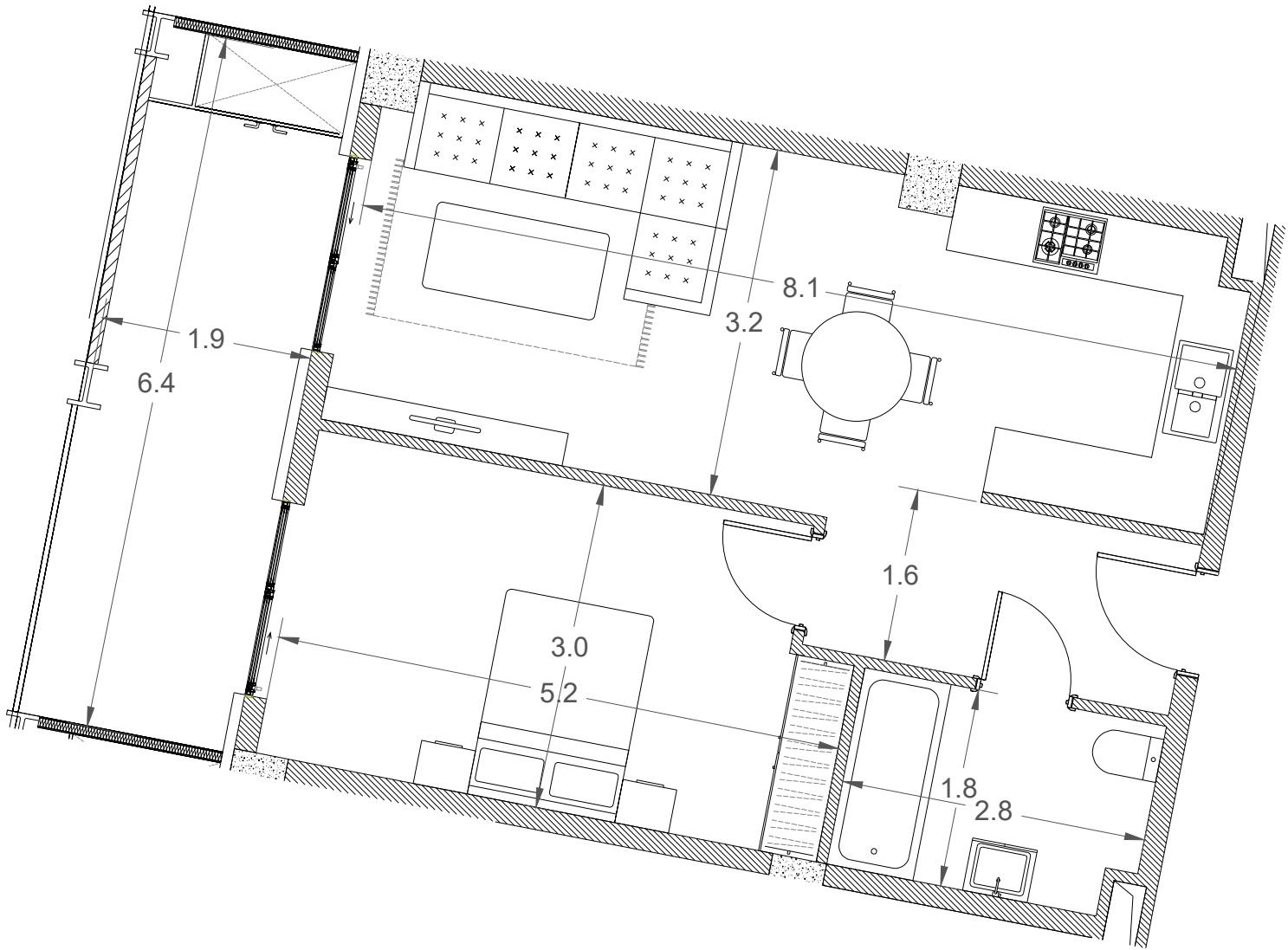
APARTMENT	#C- 01
LIVING AREA	34.7 M2
BALCONY	12.1 M2
TOTAL	46.8 M2



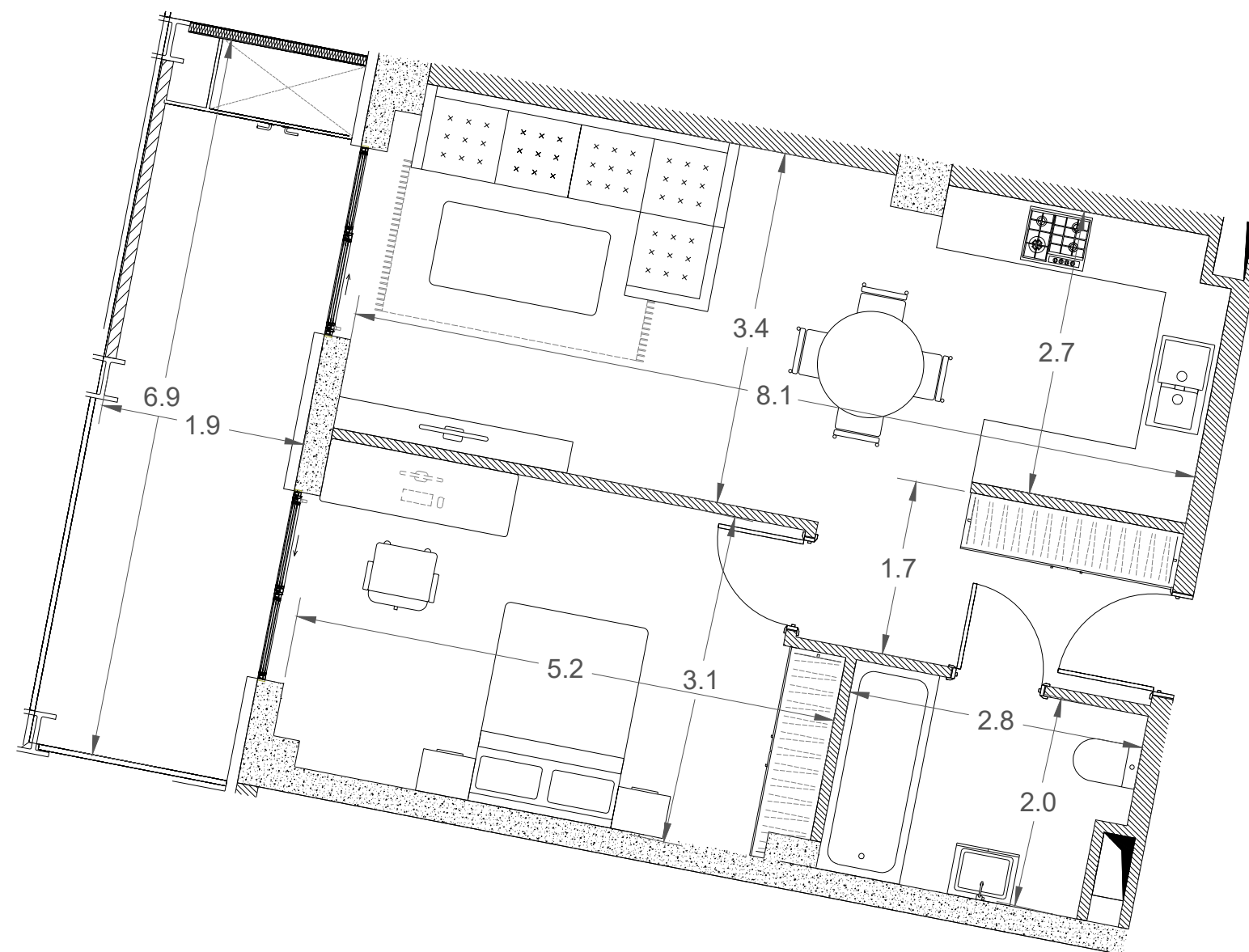
APARTMENT	#C- 02
LIVING AREA	33.2 M2
BALCONY	11.3 M2
TOTAL	44.5 M2



APARTMENT	#C- 06
LIVING AREA	50.5 M2
BALCONY	12.2 M2
TOTAL	62.7 M2



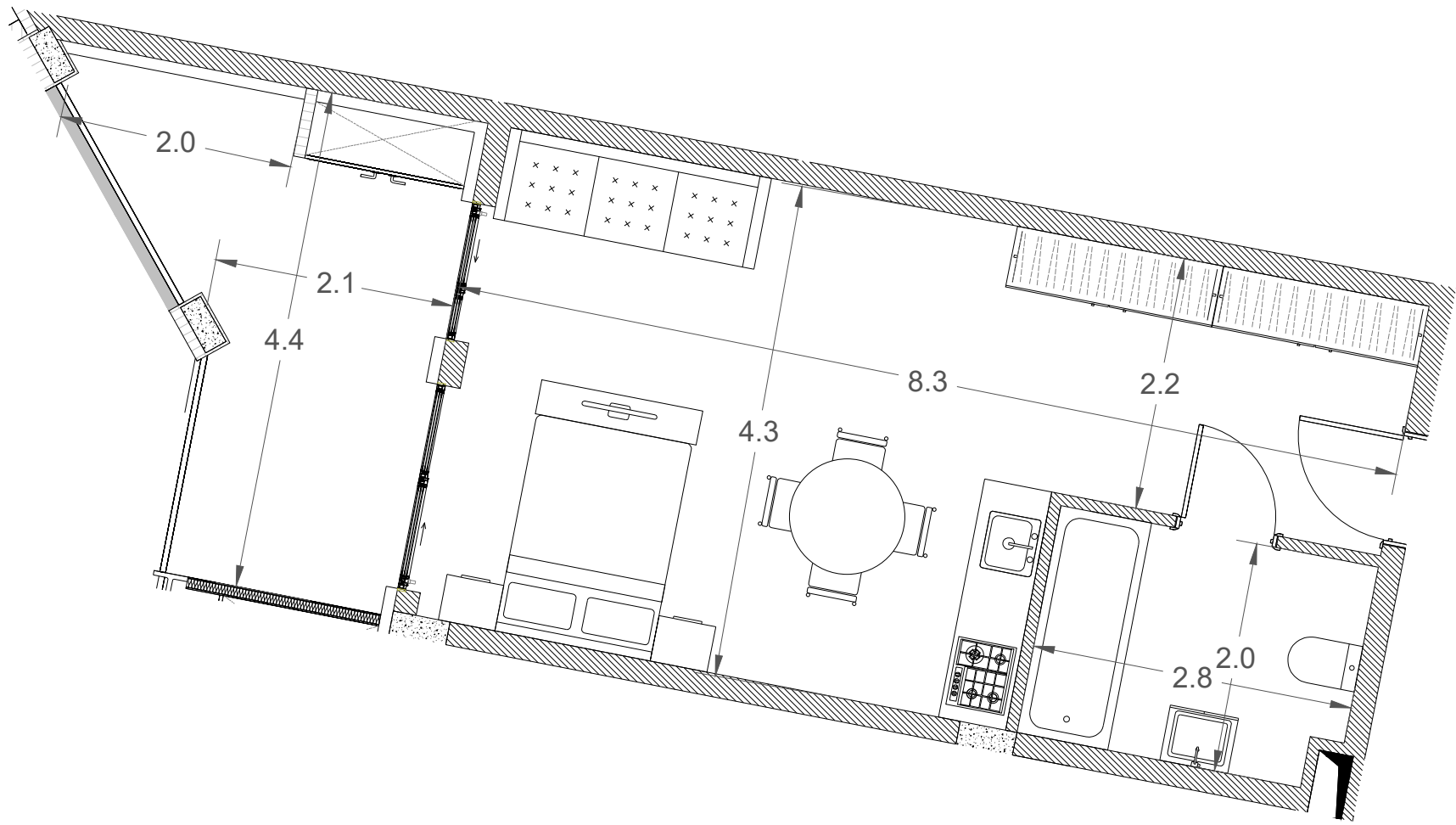
APARTMENT	#C- 07
LIVING AREA	51.9 M2
BALCONY	13.1 M2
TOTAL	65 M2



APARTMENT	#C- 04
LIVING AREA	90.8 M2
BALCONY	17.1 M2
TOTAL	107.9M2



APARTMENT	#C- 05
LIVING AREA	34.7 M2
BALCONY	10.3 M2
TOTAL	45 M2





+995 706 444 193

ge.housebook.deals

t.me/Housebooksales

wa.me/97144125007

