

# SOLA

R E S I D E N C E S



# Building Tomorrow's Urban Legacy

Centurion Developers is a leader in reshaping urban environments through innovative, sustainable real estate development.

Focused on creating vibrant communities where people can live, work, and relax, we blend cutting-edge design with environmental stewardship to ensure our projects are both functional and future-ready.





An architectural rendering of a modern high-rise apartment building named 'SOLA RESIDENCES'. The building features three towers with a central glass-enclosed core. Each tower has multiple levels of balconies with glass railings and small potted plants. The building is set against a clear blue sky with a few palm trees visible on the left and right sides. The ground floor shows a modern entrance with large glass windows and a small car parked in front.

# SOLA

R E S I D E N C E S

## A City Escape in the City

Sola Residences is the perfect place for families seeking a peaceful yet connected lifestyle. With spacious, thoughtfully designed homes, this development offers a serene retreat in the heart of the city, complemented by premium amenities that enhance everyday living.

It offers the perfect balance between city convenience and tranquil living, with everything you need right at your doorstep.



# Wasl

## Wasl as a Master Developer

A visionary force in Dubai's real estate landscape, Wasl has been shaping communities since 2008 under the leadership of Dubai Real Estate Corporation (DREC). As one of the largest real estate management companies in the region, Wasl oversees a diverse portfolio of over 40,000 properties, including residential, commercial, and hospitality developments.

With a commitment to excellence and innovation, Wasl plays a pivotal role in transforming Dubai's urban fabric, creating vibrant, sustainable communities that cater to residents, businesses, and visitors alike.





# SOLA

R E S I D E N C E S

Palm Jebel Ali

Jebel Ali Freezone

Energy Metro Station

Festival Plaza / IKEA



Corridor of Tolerance

The Gardens

Ibn Battuta Mall

Dubai Marina

Emirates Golf Club

Dubai Internet City

Sheikh Zayed Road

Al Khail Road

Sheikh Mohammed Bin Zayed Road

Sheikh Zayed Road





# Location Map

- 04 MIN

Energy Metro Station
- 05 MIN

Festival Plaza / IKEA
- 08 MIN

IBN Battuta Mall
- 09 MIN

Aster Cedar Hospital
- 10 MIN

Arbor School
- 17 MIN

Palm Jumeirah
- 18 MIN

Dubai Miracle Garden
- 20 MIN

Madinat Jumeirah
- 25 MIN

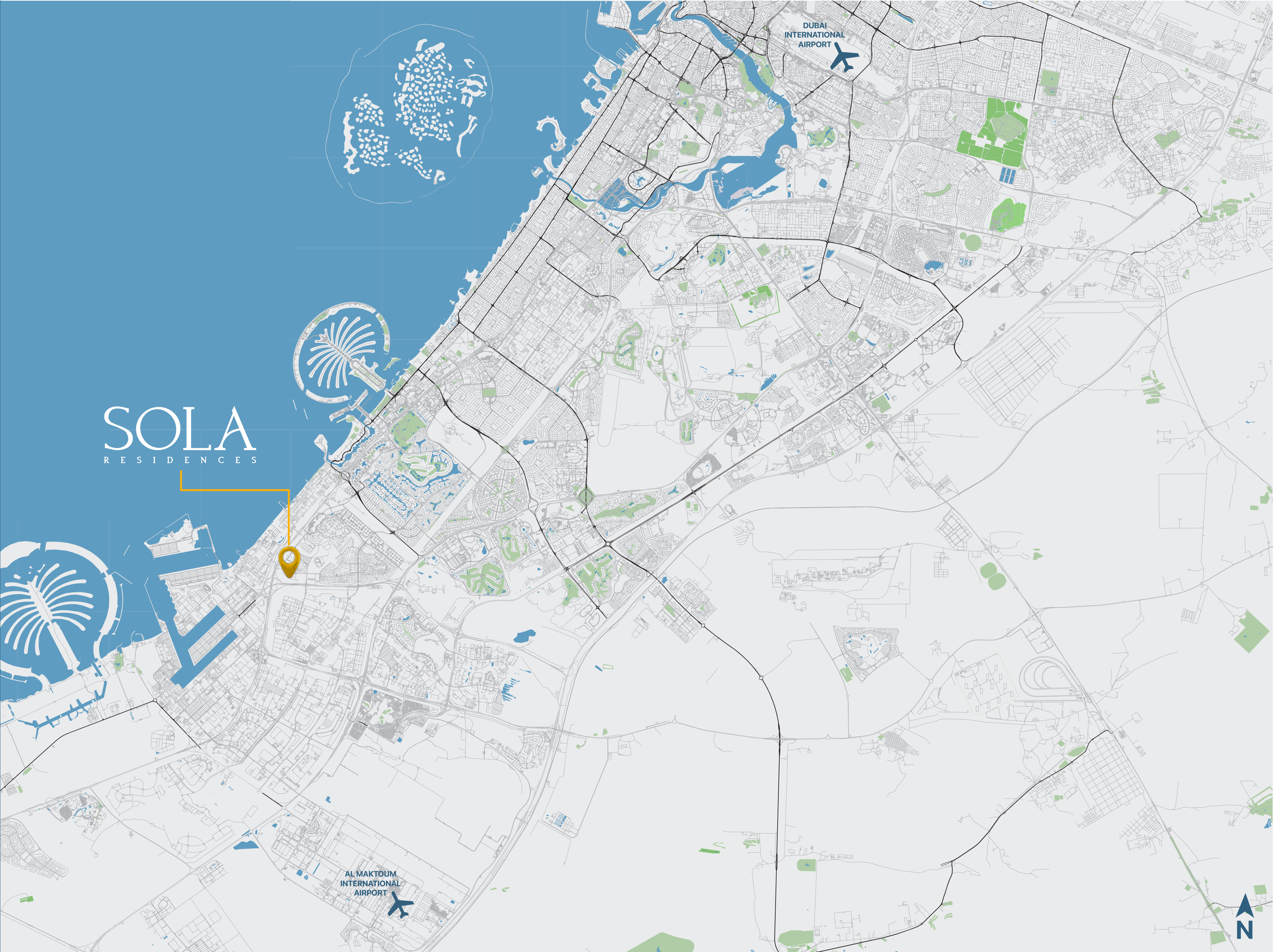
Mall of Emirates
- 28 MIN

Dubai Mall
- 30 MIN

Global Village
- 30 MIN

Al Maktoum International Airport
- 35 MIN

Dubai International Airport





# Living at the Intersection of Everything

Wasl Gate is a dynamic master development that brings the best of Jebel Ali to your doorstep. Located along Sheikh Zayed Road, it offers direct access to the Energy Metro Station and is just a short drive from Al Maktoum International Airport and Expo 2020.

With a perfect mix of residences, retail, dining, and entertainment options, Wasl Gate creates a vibrant community where everything is within reach. From bustling boulevards to family-friendly parks, it's a place where convenience meets connection, making it the ideal spot for work, leisure, and living.

SOLA  
RESIDENCES

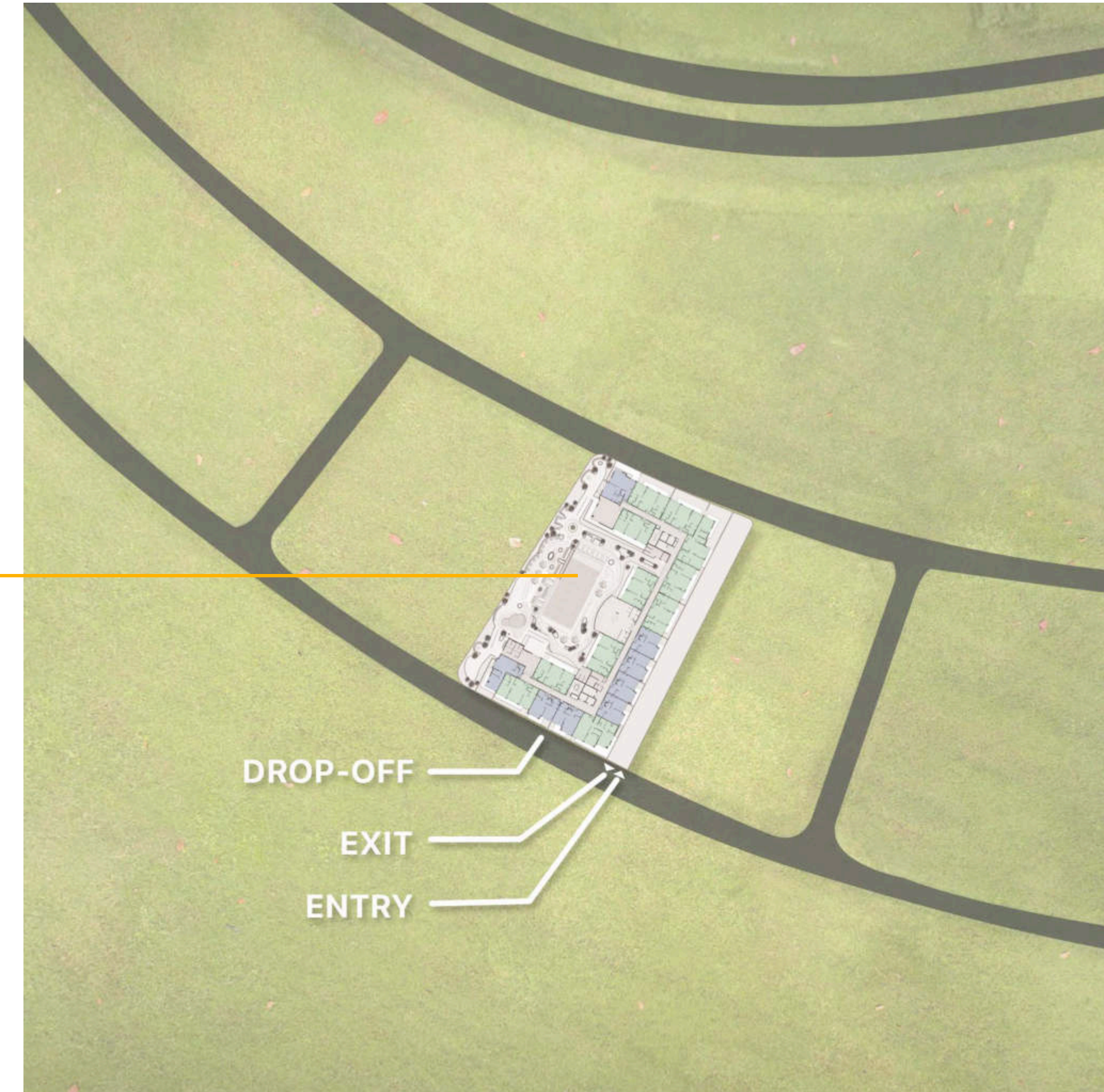


- 1 Energy Metro Station
- 2 Sheikh Zayed Road
- 3 Festival Plaza Mall / IKEA
- 4 Central Park
- 5 School
- 6 Corridor of Tolerance





## Plot Location





# Project Details

Project Name	SOLA Residences
Developer	Sola Residences Real Estate Development LLC
Architect	Modular Design Engg Consultant
Location	Wasl Gate, Jebel Ali
Est. Completion Date	Nov 2027
Tower Height	G + 1P + 12 + R
Estimated Service Charges	14 AED / Sqft
White Goods	Cooking Hob, Refrigerator, Microwave & Washing Machine
Brand of White Goods	Teka or Equivalent
Elevators	Passenger x 4
	Service x 1
No of Parking	1 Parking - Studio, 1BR, 2BR
	2 Parking - 3BR
Unit Mix	
Type	Indicative Sizes
Studio	392 Sq.ft
1 Bedroom Plus	738 Sq.ft
2 Bedroom	1,025 Sq.ft
2 Bedroom Large	1,324 Sq.ft
3 Bedroom	1,727 Sq.ft

All images used are for illustrative purposes only and do not represent the actual size, features, specifications, fittings and furnishings. The developer reserves the right to make revisions / alterations, at its absolute discretion, without any liability whatsoever.





# Project Amenities



**Pool**  
2,400 Sq.ft  
1.2 M Depth (Deep End)  
Dimension : 22.3 M x 10M



**Kids Pool**  
270 Sq.ft



**Gym**  
1,192 Sq.ft



**Changing Room**  
Gym - Male  
Gym - Female  
  
Adult Pool - Male  
Adult Pool - Female  
  
Kids Pool - Boys  
Kids Pool - Girls



**Kids Play Area**  
374 Sq.ft  
0.5 M Depth (Deep End)



**Multipurpose Room**  
620 Sq.ft

All images used are for illustrative purposes only and do not represent the actual size, features, specifications, fittings and furnishings. The developer reserves the right to make revisions / alterations, at its absolute discretion, without any liability whatsoever.



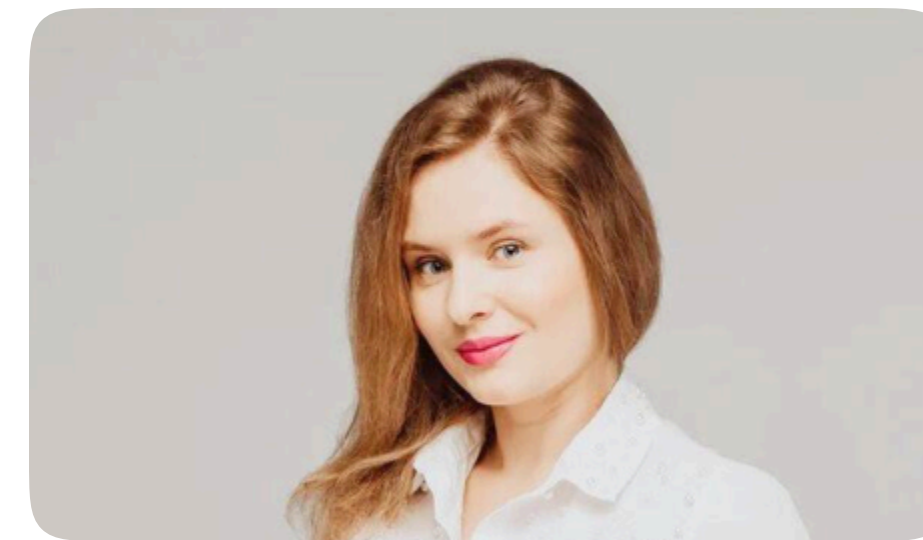




**housebook** Real Estate Company  
since 2012 in the UAE

**+971 (4) 412-5007**

Managers of partnerships



Alevtina Kapustina



Svetlana Guseva

## Office

Housebook Real Estate LCC

Dubai Marina, office 2502-01, Dubai, UAE

Company license: 1128098

[ae.housebook.deals](https://ae.housebook.deals)

[partner@housebook.ae](mailto:partner@housebook.ae)

