

SUNSET BAY 2

AT DUBAI ISLANDS

IMTIAZ



BEACH *ACCESS*

21 kilometers of pristine coastline, certified with Blue Flag Global Accreditation.





IDYLLIC *LOCATION*



Breathtaking
Sunset Views



9 Marinas



21 km
Beachfront



86 Resorts &
Hotels



2 Golf Courses

STUPENDOUS *VIEWS*

Every space is designed to capture the beauty of Dubai Islands, offering serene vistas and a rare living experience.



Seamless finishes and timeless materials embody elegance, fusing modern design with enduring craftsmanship.

ROOFTOP *INFINITY POOL*

Live unforgettable moments by the ever-flowing rooftop infinity pool, a sanctuary designed for ultimate relaxation and timeless elegance.



Sunlit serenity, private moments, and a poolside escape like no other.



URBAN *WOODS*

A retreat where every moment feels connected to the nature.



Immerse yourself in lush greenery and serene pathways, seamlessly blending nature and modern living.



WORLD-CLASS *AMENITIES*

Outdoor Dining / BBQ Area

Seating Zone

Meeting Area

Water Lounges

Outdoor Shower

Floating Islands

Jacuzzi

Sunken Lounge

Kids' Playground

Outdoor Yoga

Private Terrace

Water Feature

Ping Pong Table

Clubhouse

Gym

GRACEFUL *WELCOME*

Step into a foyer that redefines timeless elegance. With its extraordinary design and artful details, it serves as a graceful prelude to the exceptional spaces beyond.



The sitting lounge invites you to unwind in utmost comfort with a harmonious balance of style and repose, perfect for moments of reflection or connection.

GOURMET *HAVEN*

Dining space designed for refined living, seamlessly blending modern functionality with timeless design aesthetics.

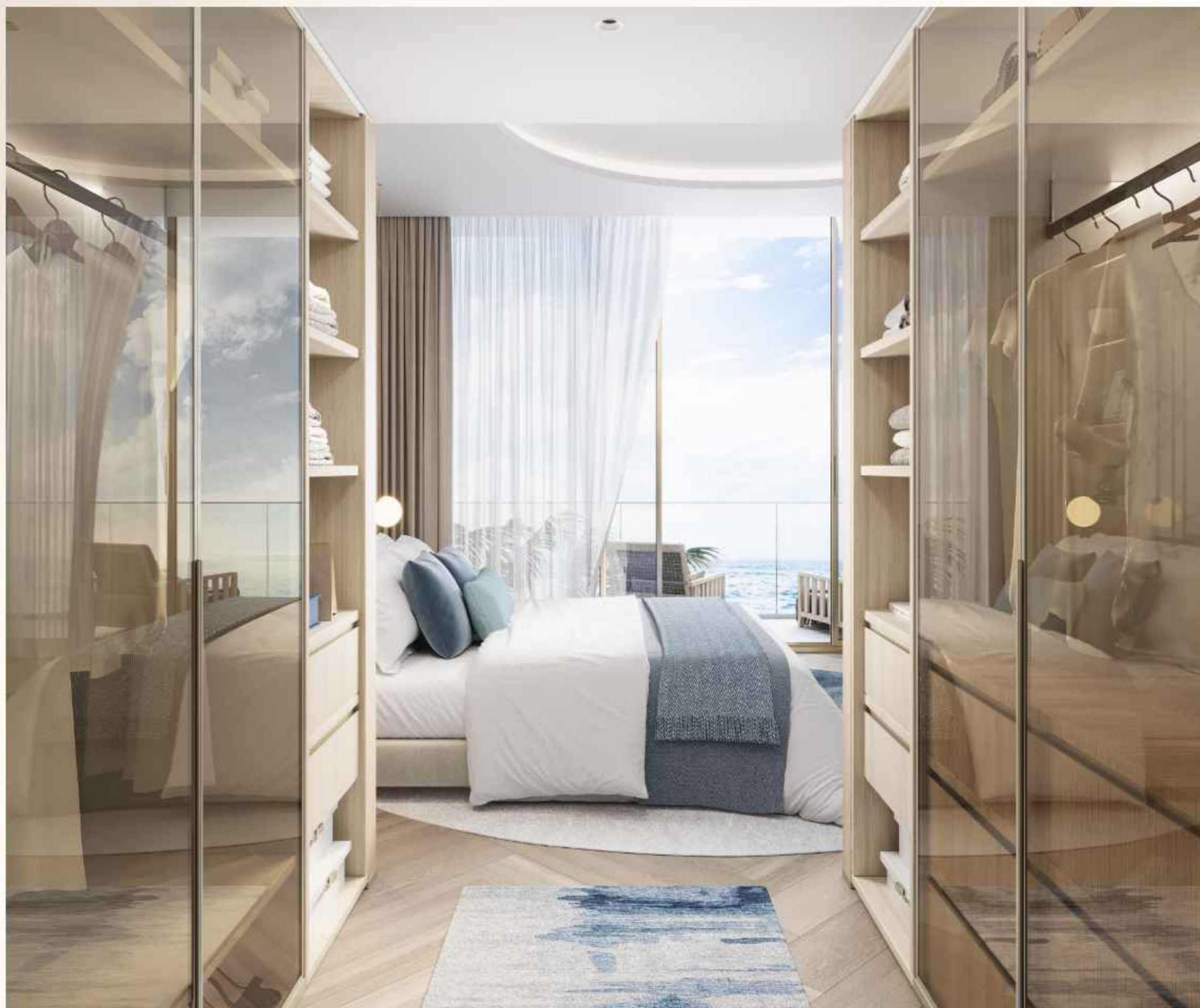


Illuminated spaces for seamless organization and bold display.



BEDROOM

The grand mall on Island A offers an exciting blend of retail and entertainment, elevating your shopping experience.



A sleek wardrobe offering refined design, ample storage, and effortless organization.

LIVING *SPACE*

A sunlit haven where sea breezes whisper, books and laughter mingle, and every corner invites quiet or joy.



An inviting space where indoor games bring joy and connection, blending style with the spirit of togetherness.



MODERN *GYMNASIUM*

A meticulously designed fitness space blending cutting-edge equipment with panoramic views, inspiring a balance of strength and composure in every workout.



Step into a dedicated strength and training zone equipped with premium gear, tailored to energize and elevate your fitness journey.



UNIT TYPES *AND SIZES*

APARTMENTS

1 Bedroom - 32 Units

2 Bedrooms - 32 Units

3 Bedrooms - 2 Units

SIZE RANGE

1 Bedroom - From 941 Sq. Ft. to 1075 Sq. Ft

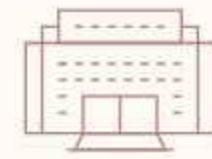
2 Bedrooms - From 1351 Sq. Ft. to 2264 Sq. Ft

3 Bedrooms - From 2242 Sq. Ft. to 2283 Sq. Ft.

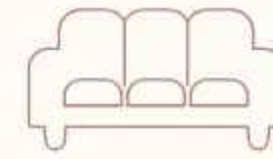
BRANDED *FEATURES*



STEPS AWAY
FROM THE BEACH



PROXIMITY TO
PREMIER MALLS



FULLY FURNISHED
WITH BESPOKE INTERIORS



EV CHARGING
STATIONS



STEPS AWAY
FROM THE PARK

Miele

GESSI[®]


Villeroy & Boch
1748

alexa




housebook Real Estate Company
since 2012 in the UAE

+971 (4) 412-5007

Managers of partnerships



Alevtina Kapustina



Svetlana Guseva

Office

Housebook Real Estate LCC

Dubai Marina, office 2502-01, Dubai, UAE

Company license: 1128098

ae.housebook.deals

partner@housebook.ae

