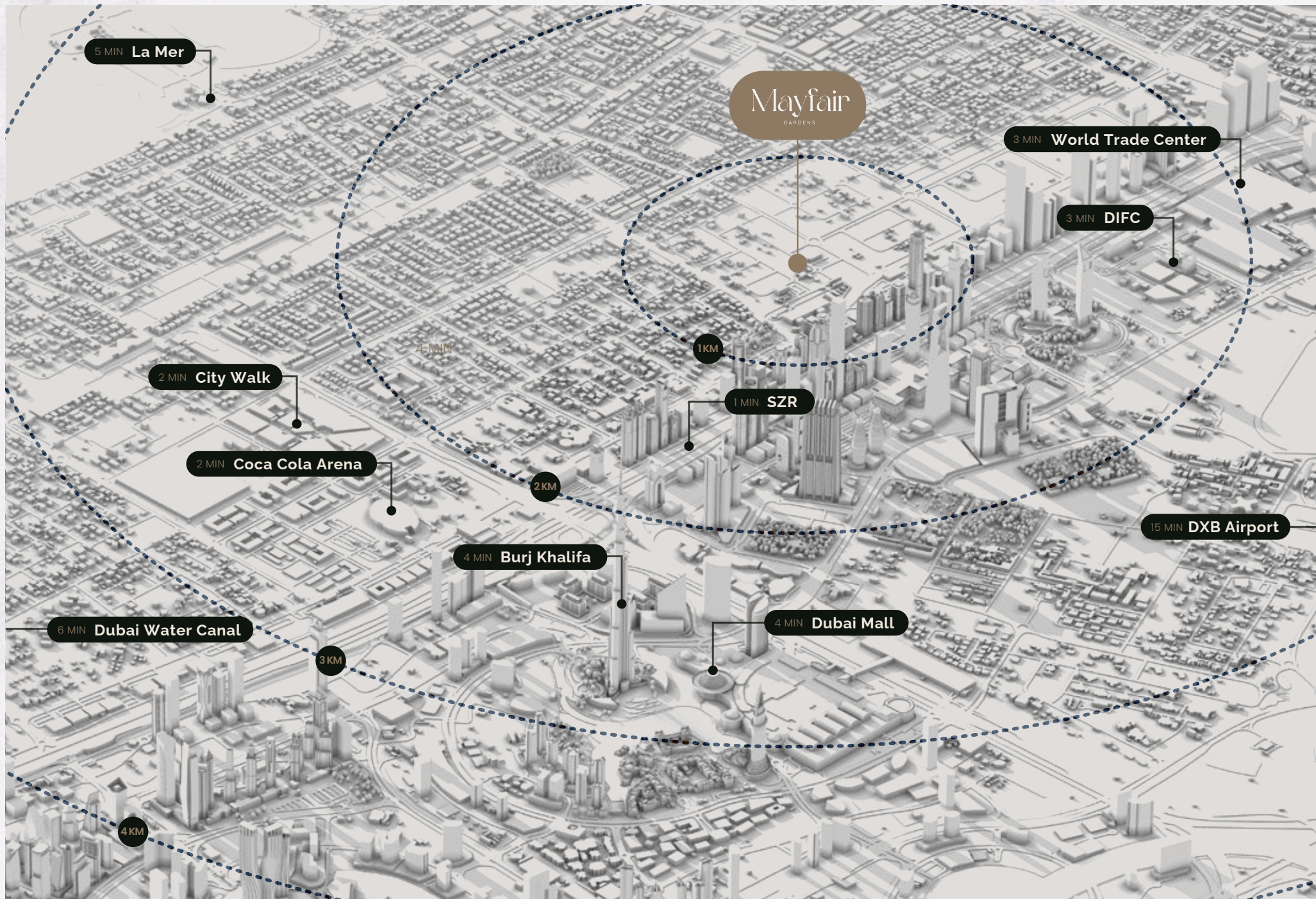


The background of the entire image is a light-colored, marbled surface with soft, swirling patterns in shades of off-white and light grey, resembling natural stone or marble.

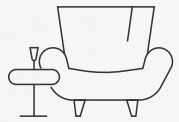
Mayfair

GARDENS

MAJID



THE AMENITIES WITH THE PROJECT



Exclusive Lounge



Panoramic City Views



Lush Chic Bar Area



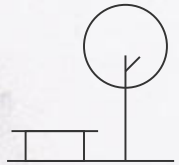
Infinity Pool



Modern Gym



Yoga cabana



Lush Garden Spaces



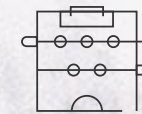
Barbeque Area



Chess Playing Area



Pool Table



Foosball Table



Table Tennis



THE INFINITY POOL

At Mayfair Gardens, the infinity pool is a masterpiece of luxury and tranquility. With its breathtaking view of the iconic Dubai skyline, the pool offers a serene escape from the city's hustle. Designed to promote relaxation and well-being, the infinity pool at Mayfair Gardens provides an unparalleled experience of refined living amidst the beauty of Dubai.

GARDEN SPACES & BARBEQUE AREA

Our beautifully landscaped gardens offer a peaceful retreat where you can unwind amidst lush greenery. These serene spaces are ideal for relaxation, meditation, or enjoying a good book in a tranquil setting. Barbecue Area: Enjoy outdoor dining and social gatherings in our well-appointed barbecue area. Designed for both casual and special occasions, this space allows you to savor delicious meals while enjoying the company of friends and family.





EXCLUSIVE LOUNGES & SOCIAL SPACES

Our dedicated lounges and social areas are perfect for entertaining guests or relaxing with neighbors. These spaces foster a sense of community, offering comfortable and stylish environments for socializing.



YOGA
& VIEWING DECK

STATE OF THE ART FITNESS CENTER

Our fitness center features the latest exercise equipment, providing a comprehensive space for all workout needs. The elegant design and serene environment ensure that your fitness routine is both effective and enjoyable.





ELEGANT INTERIORS

The interiors boast high-quality finishes and elegant decor, featuring marble accents and contemporary fittings that exude sophistication. The spacious living area is flooded with natural light, creating a warm and inviting atmosphere.

SUMPTUOUS BEDROOMS

The bedroom offers a serene retreat with a plush, comfortable bed and tasteful decor. Floor-to-ceiling windows provide breathtaking views of the city skyline, creating a perfect blend of comfort and luxury.



HI-END KITCHEN

Our kitchens are outfitted with top-of-the-line appliances, offering residents the latest in modern technology and functionality. From sleek, energy-efficient refrigerators to state-of-the-art ovens and dishwashers, every appliance is selected to enhance your culinary endeavors and simplify daily tasks.



LAVISH BATHROOMS

The bathroom is a masterpiece of modern design, adorned with exquisite marble finishes and high-end fixtures. Ambient lighting and sleek, minimalist aesthetics provide a spa-like experience, ensuring relaxation and tranquility.



BUILDING FACT SHEET

Building Configuration: G + 2P + 8 + R

64 apartments

24 studios & 40 1-Bedroom apartments

Studio Unit Sizes: 400 sqft - 473 sqft

1 Bedroom: 821 sqft - 1,175 sqft

Service charges 13-15 AED

Fully Furnished Apartments

Ownership Freehold

Key Views: Burj Khalifa & SZR Skyline View

Completion: Est. Q2 2026



PAYMENT PLAN

Payment on booking	10%
Payment +4% on SPA	10%
Payment after three months	5%
Payment after six months	5%
Payment after 30% completion	10%
Payment after 50% completion	10%
Payment on 100% completion	50%

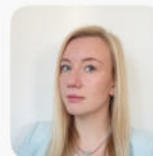


+971 (4) 412-5000

Affiliate
managers



**Alevtina
Kapustina**



**Svetlana
Guseva**

Office

Housebook Real Estate LCC

Dubai Marina, office 2502-01, Dubai, UAE

Company license: 1128098

ae.housebook.deals

partner@housebook.ae

