

MATIANI   
BY BIOGRAP I



APARTAMENTS



APARTAMENT TYPE

Bakmi

1 BEDROOM

Total Areaa : **63.02 sq.m**

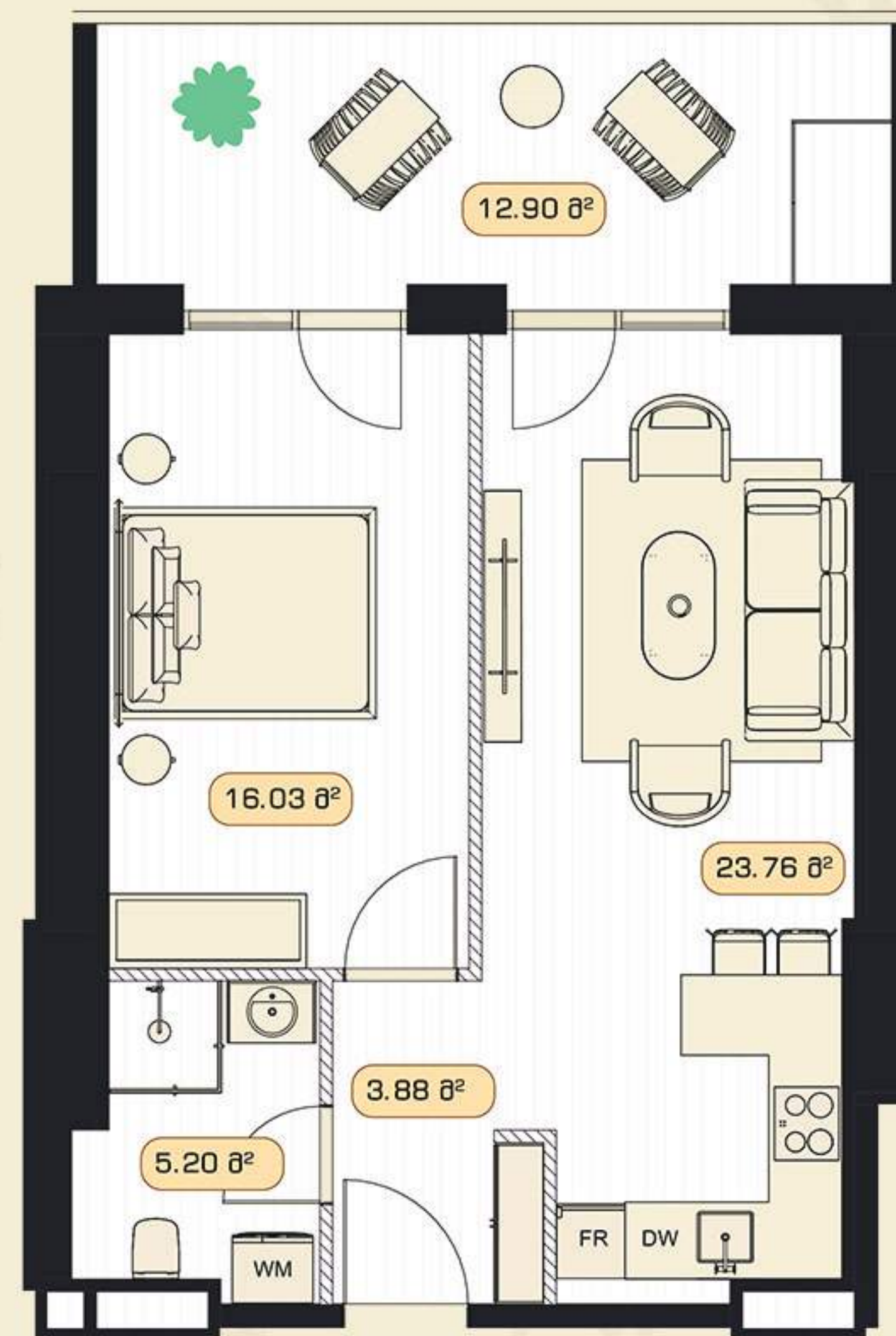
Hall: **3.88 sq.m**

Living Room / Kitchen: **23.76 sq.m**

Bedroom: **16.03 sq.m**

WC: **5.20 sq.m**

Terrace: **12.90 sq.m**



APARTAMENT TYPE

Otaridi

1 BEDROOM

Total Areaa : **64.12 sq.m**

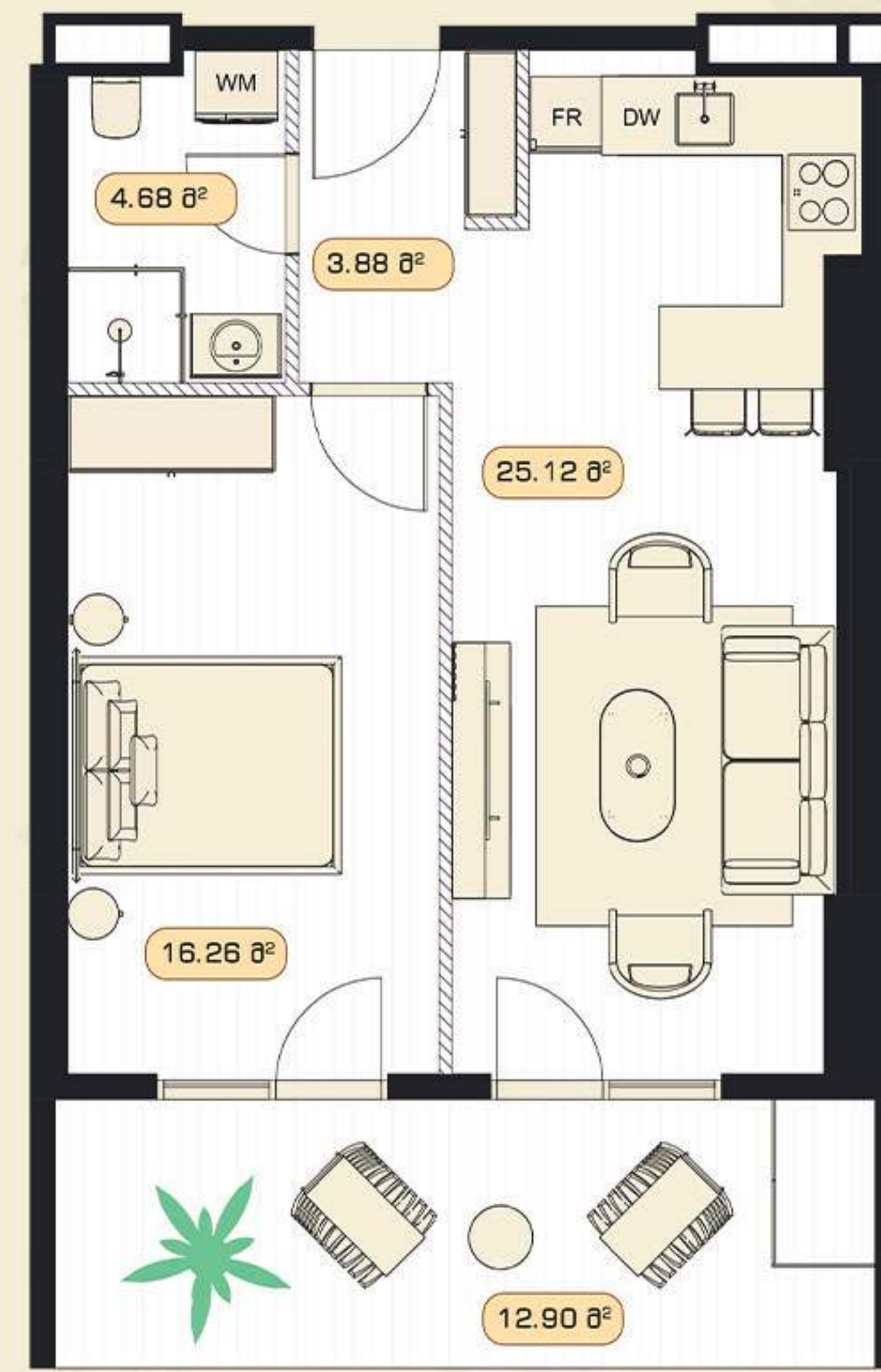
Hall: **3.88 sq.m**

Living Room / Kitchen: **25.12 sq.m**

Bedroom: **16.26 sq.m**

WC: **4.68 sq.m**

Terrace: **12.90 sq.m**



APARTAMENT TYPE

Andamati

1 BEDROOM

Total Area : **64.12 sq.m**

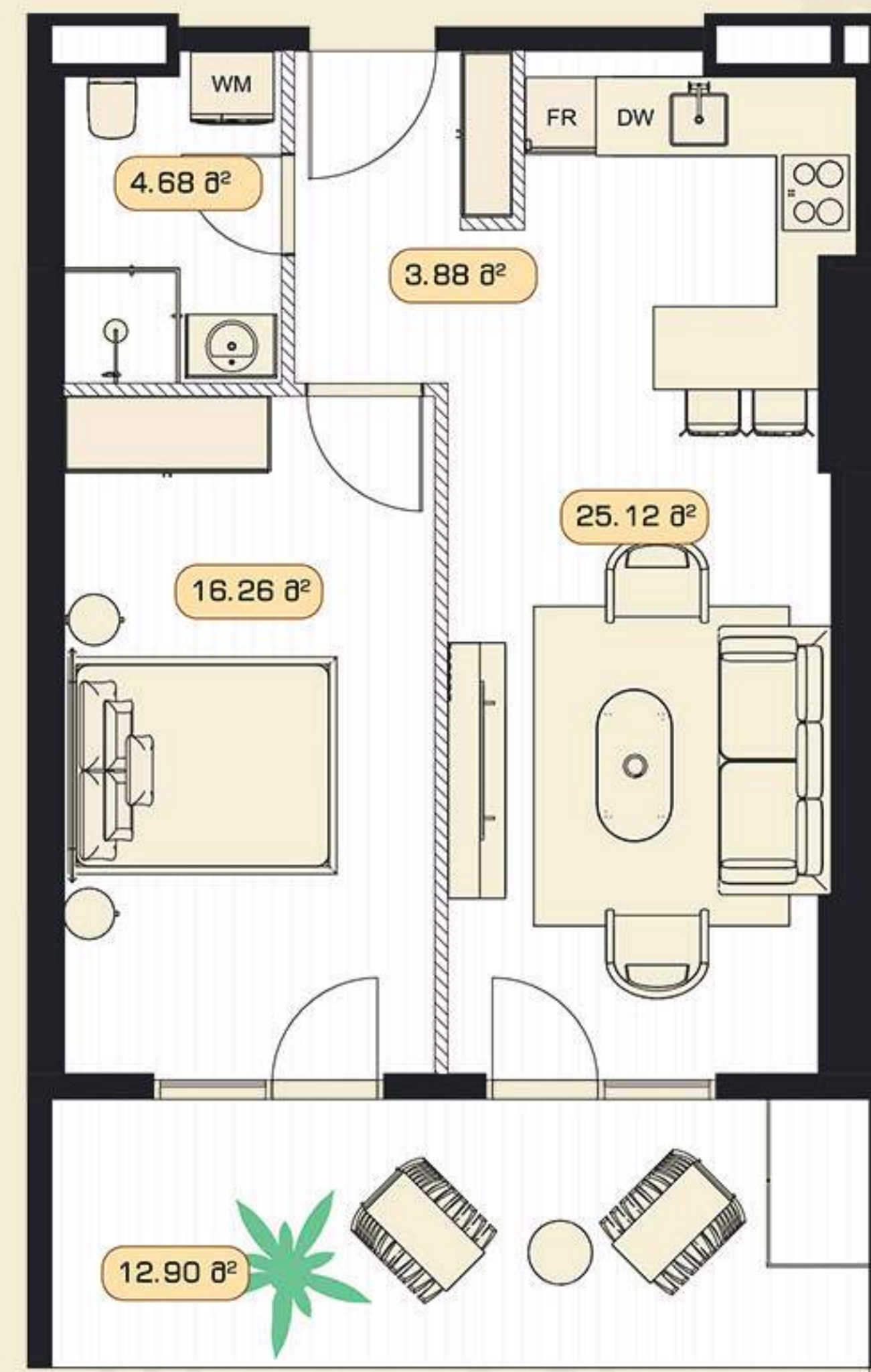
Hall: **3.88 sq.m**

Living Room / Kitchen: **25.12 sq.m**

Bedroom: **16.26 sq.m**

WC: **4.68 sq.m**

Terrace: **12.90 sq.m**



APARTAMENT TYPE

Adimi

1 BEDROOM

Total Area : **64.12 sq.m**

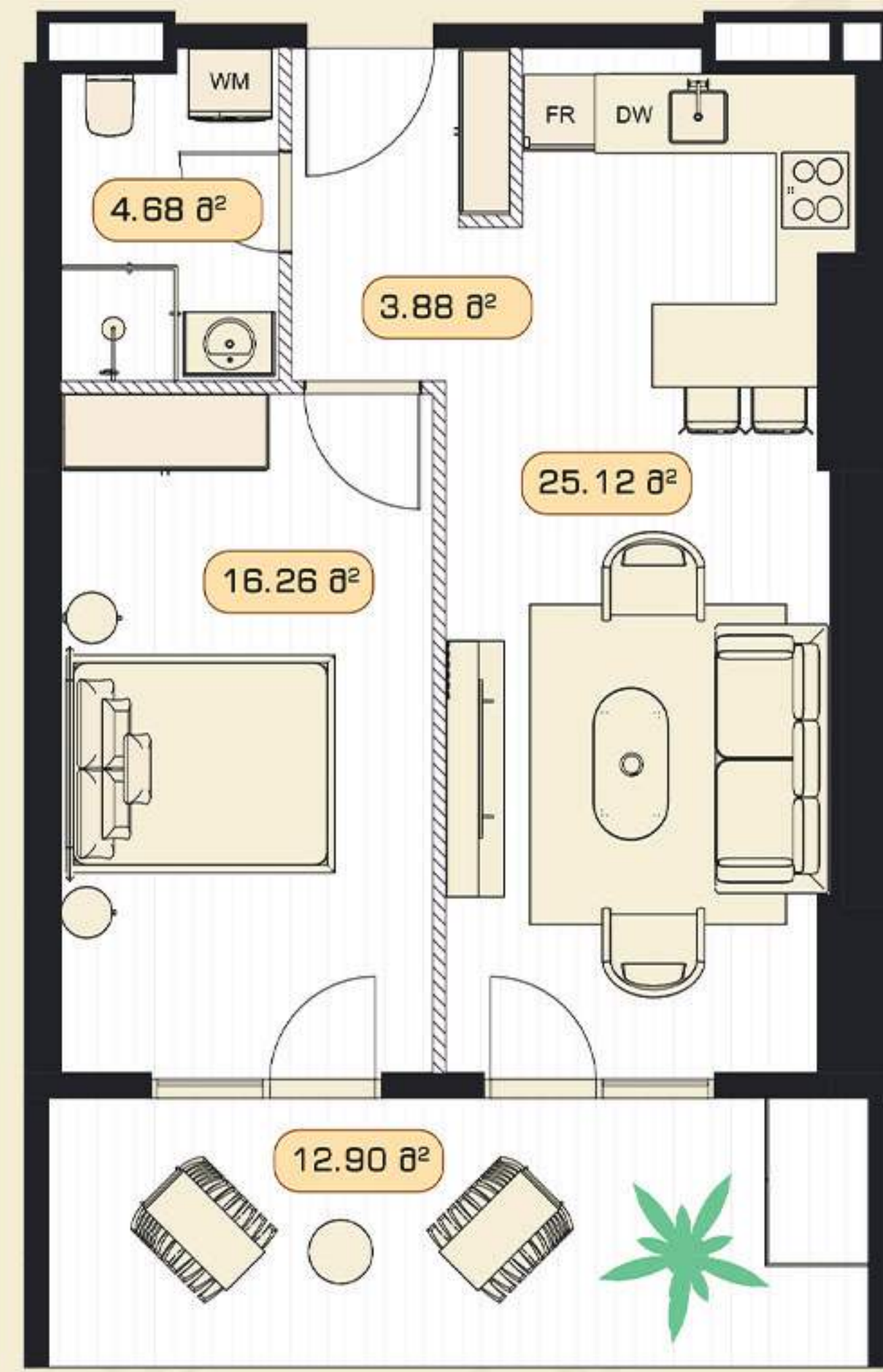
Hall: **3.88 sq.m**

Living Room / Kitchen: **25.12 sq.m**

Bedroom: **16.26 sq.m**

WC: **4.68 sq.m**

Terrace: **12.90 sq.m**



APARTAMENT TYPE

Romanuli

1 BEDROOM

Total Area : **63.69 sq.m**

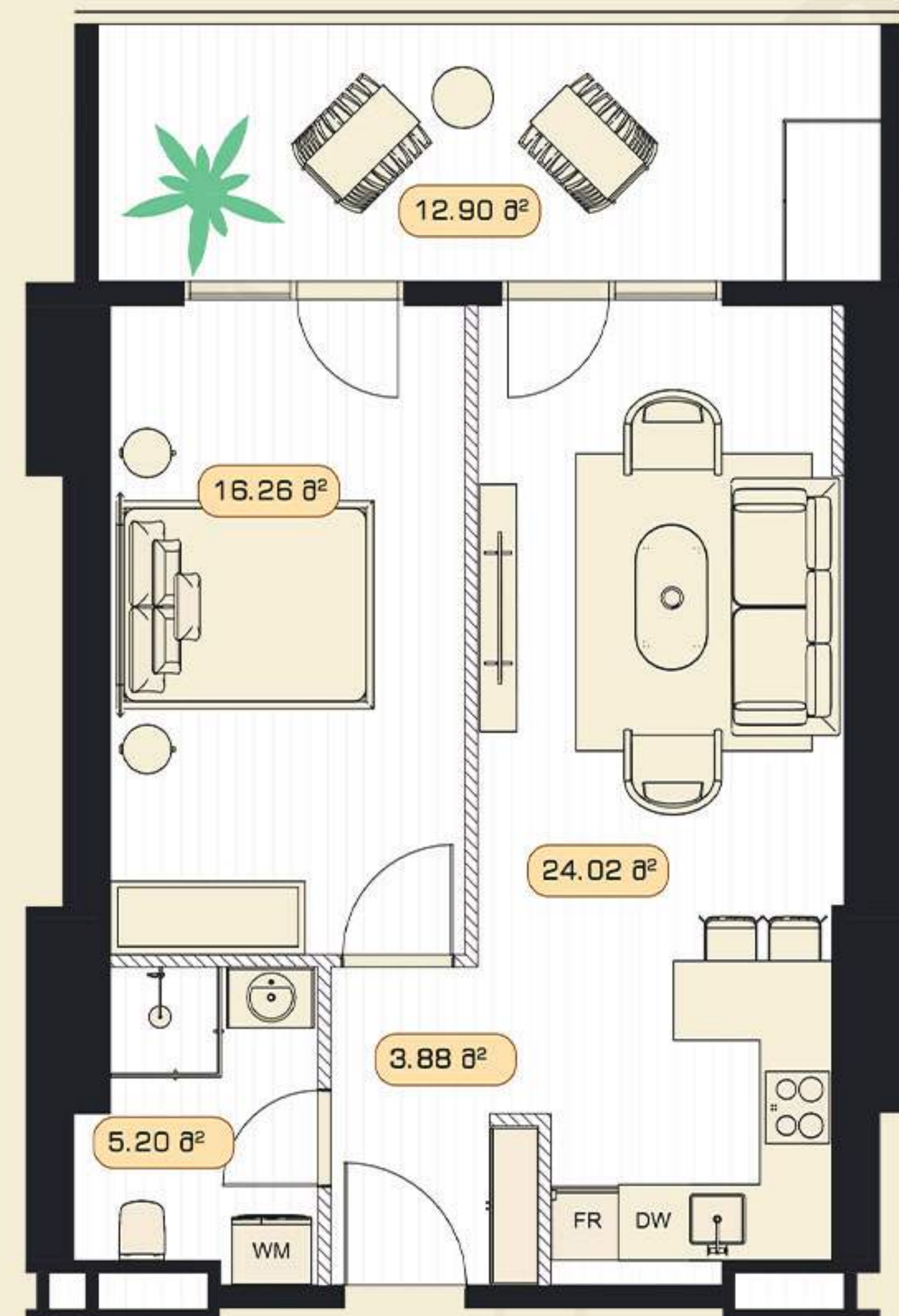
Hall: **3.88 sq.m**

Living Room / Kitchen: **24.02 sq.m**

Bedroom: **16.26 sq.m**

WC: **5.20 sq.m**

Terrace: **12.90 sq.m**



APARTAMENT TYPE

Aspirozi

1 BEDROOM

Total Area : **64.27 sq.m**

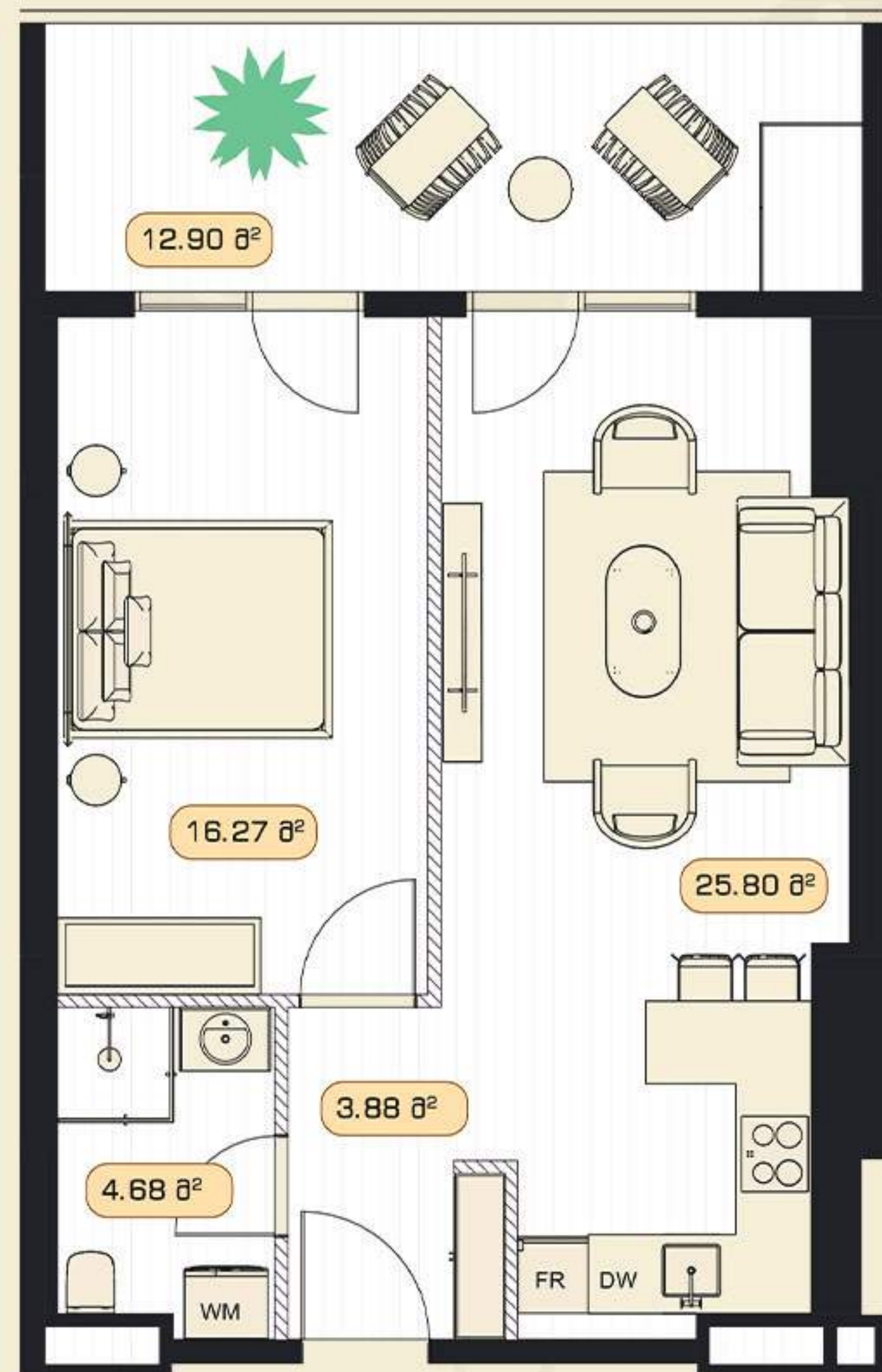
Hall: **3.88 sq.m**

Living Room / Kitchen: **25.80 sq.m**

Bedroom: **16.27 sq.m**

WC: **4.68 sq.m**

Terrace: **12.90 sq.m**



APARTAMENT TYPE

Amarti

1 BEDROOM

Total Area : **65.32 sq.m**

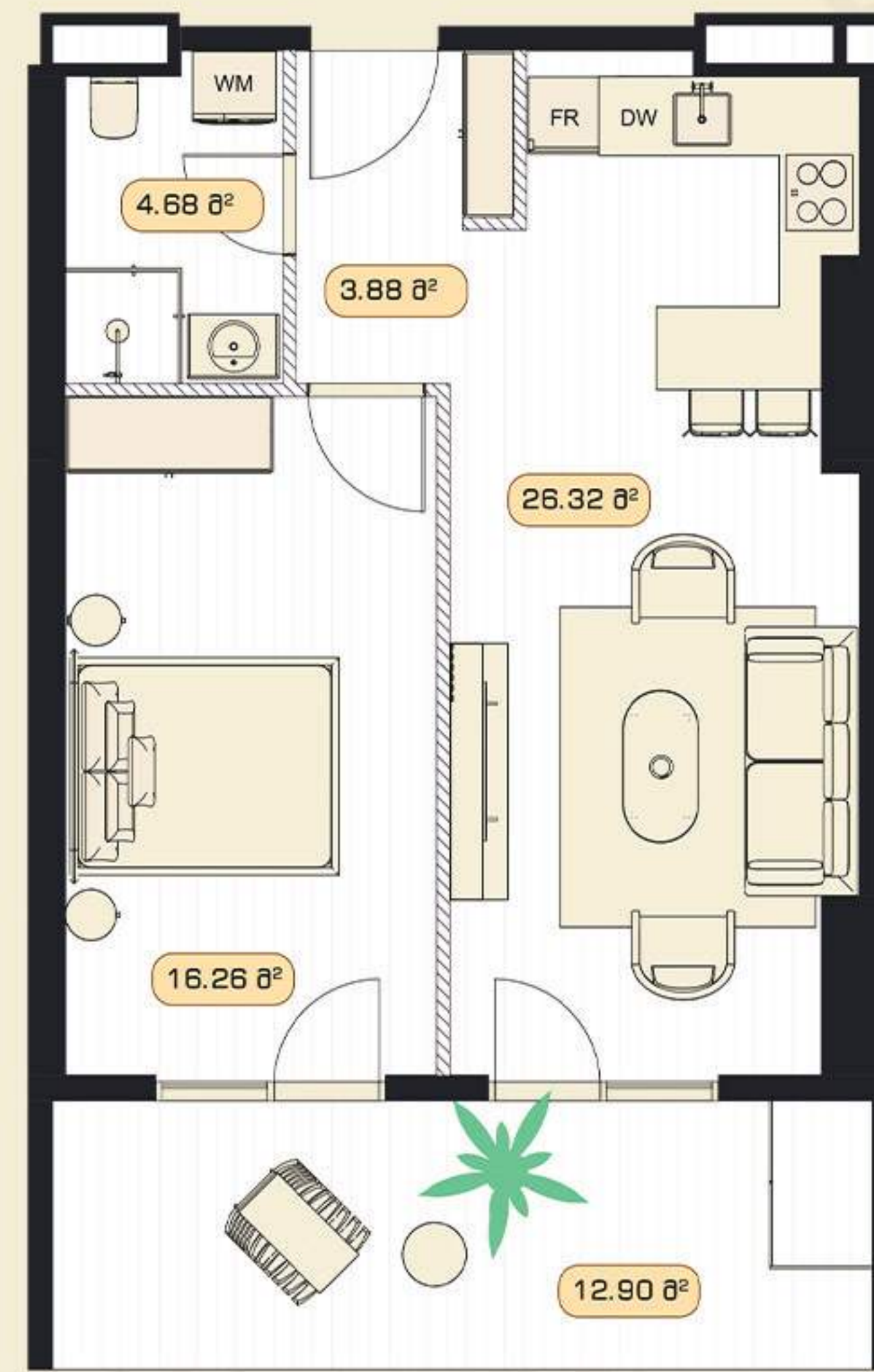
Hall: **3.88 sq.m**

Living Room / Kitchen: **26.32 sq.m**

Bedroom: **16.26 sq.m**

WC: **4.68 sq.m**

Terrace: **12.90 sq.m**



APARTAMENT TYPE

Bissoni

1 BEDROOM

Total Area : **65.32 sq.m**

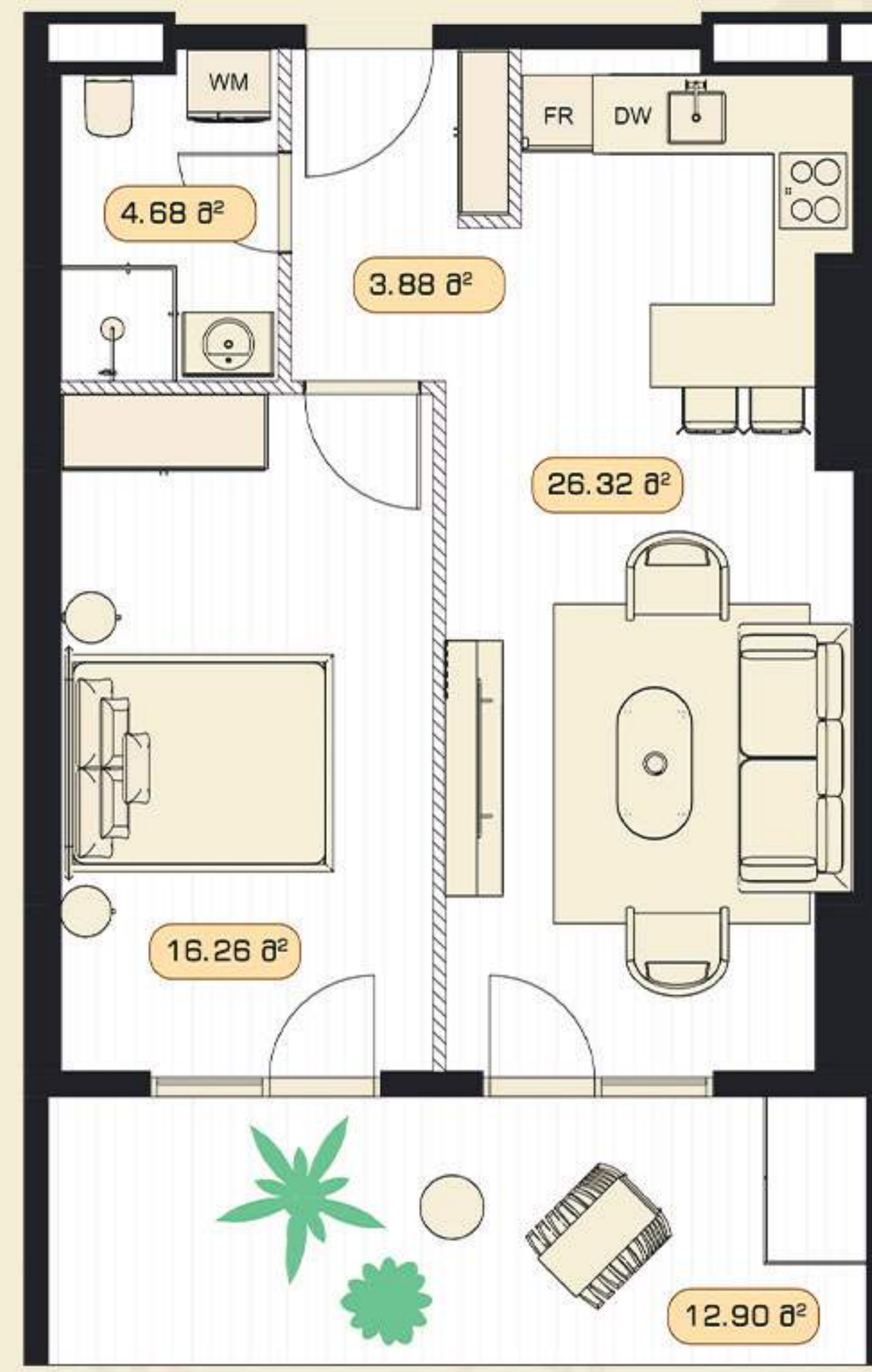
Hall: **3.88 sq.m**

Living Room / Kitchen: **26.32 sq.m**

Bedroom: **16.26 sq.m**

WC: **4.68 sq.m**

Terrace: **12.90 sq.m**



APARTAMENT TYPE

Dianosi

1 BEDROOM

Total Area : **65.32 sq.m**

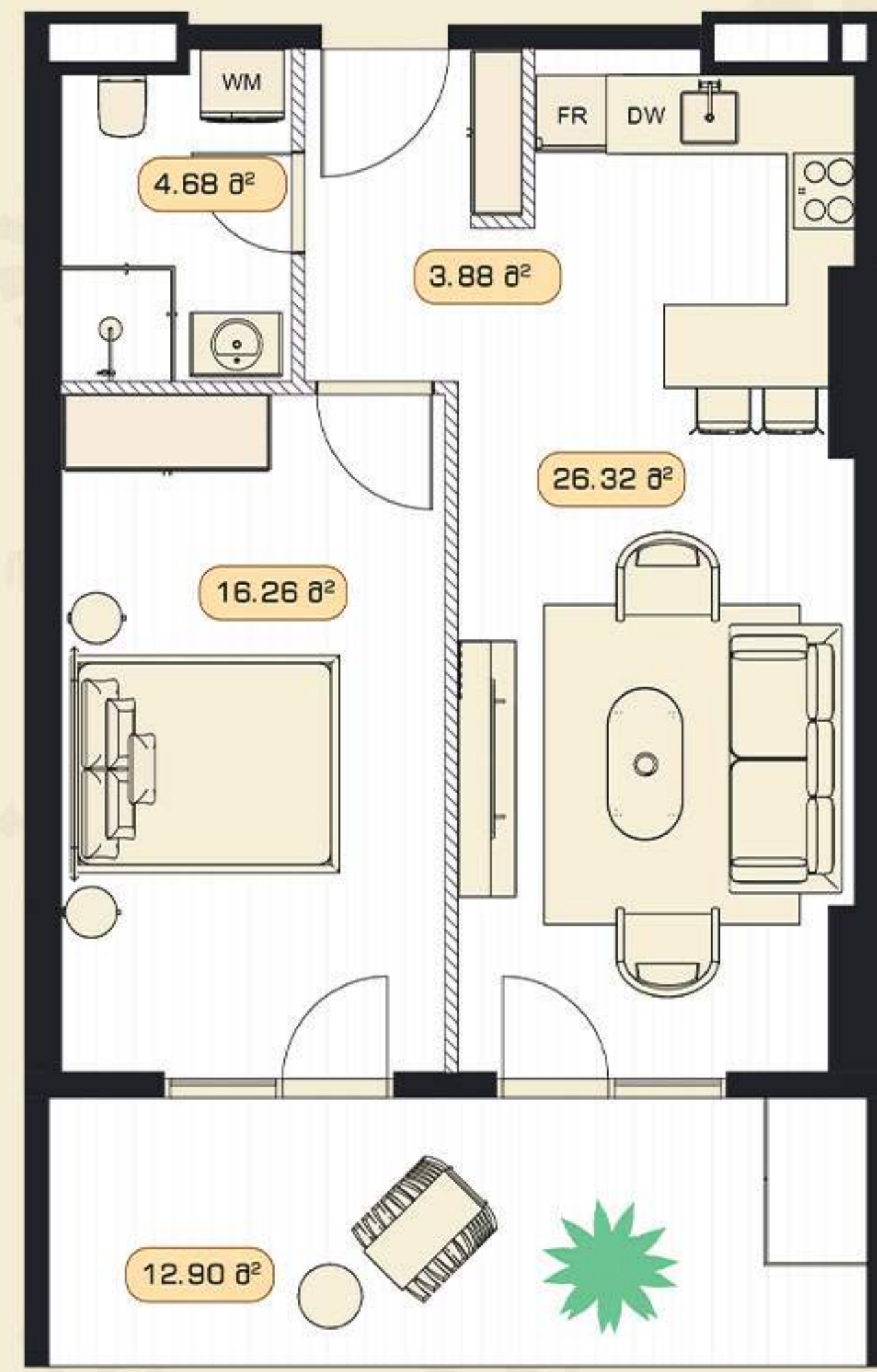
Hall: **3.88 sq.m**

Living Room / Kitchen: **26.32 sq.m**

Bedroom: **16.26 sq.m**

WC: **4.68 sq.m**

Terrace: **12.90 sq.m**



APARTAMENT TYPE

Zessi

2 BEDROOM

Total Area : **99.26 sq.m**

Hall: **10.15 sq.m**

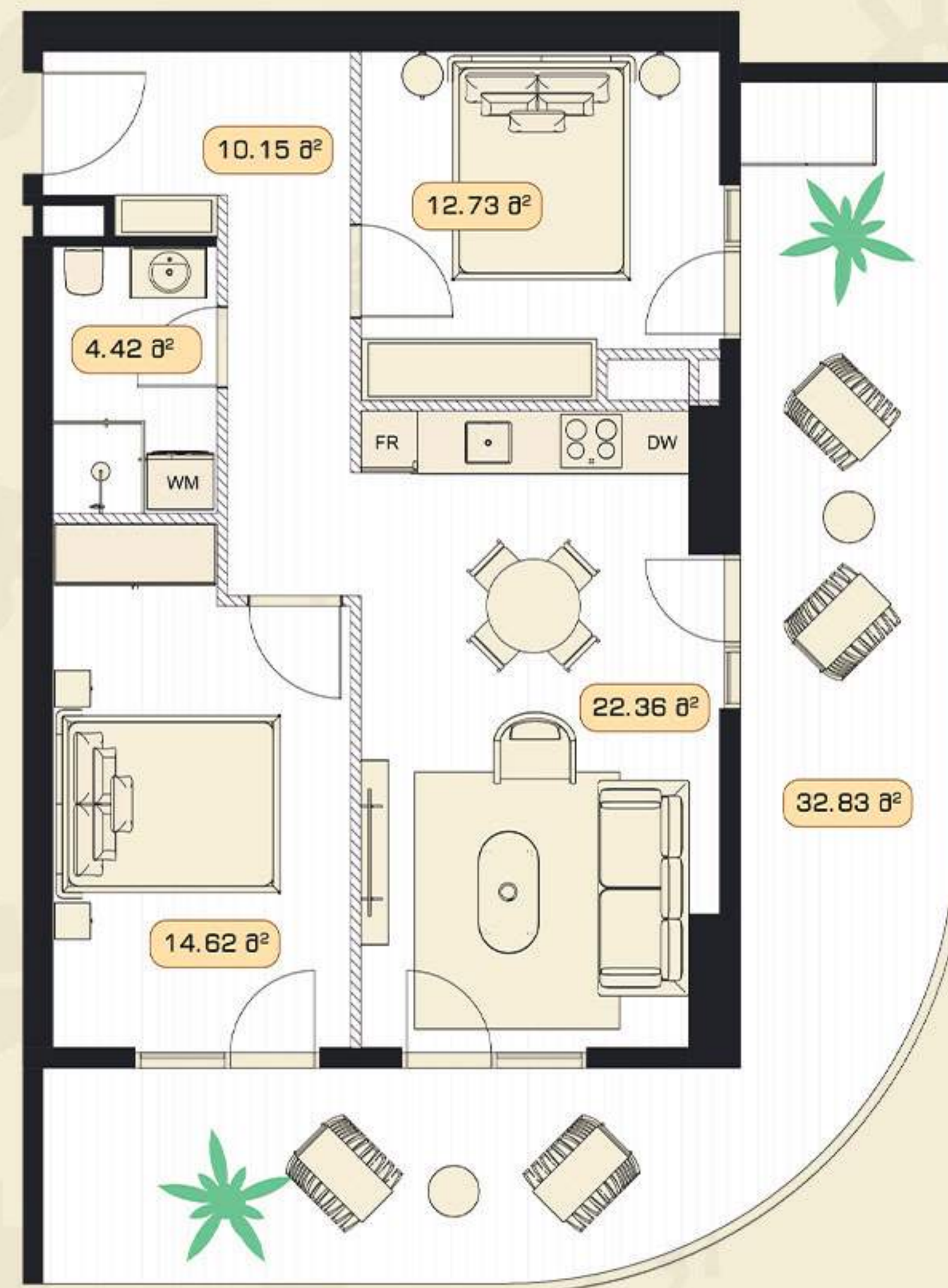
Living Room / Kitchen: **22.36 sq.m**

Bedroom#1: **14.62 sq.m**

Bedroom#2: **12.73 sq.m**

WC: **4.42 sq.m**

Terrace: **32.83 sq.m**



APARTAMENT TYPE

Sati

2 BEDROOM

Total Area : **101.86 sq.m**

Hall: **10.75 sq.m**

Livinf Room / Kitchen: **22.91 sq.m**

Bedroom#1: **14.71 sq.m**

Bedroom#2: **12.72 sq.m**

WC: **4.95 sq.m**

Terrace: **33.63 sq.m**



APARTAMENT TYPE

Misheri

2 BEDROOM

Total Area : **113.85 sq.m**

Hall: **4.90 sq.m**

Living Room / Kitchen: **29.50 sq.m**

Bedroom#1: **14.13 sq.m**

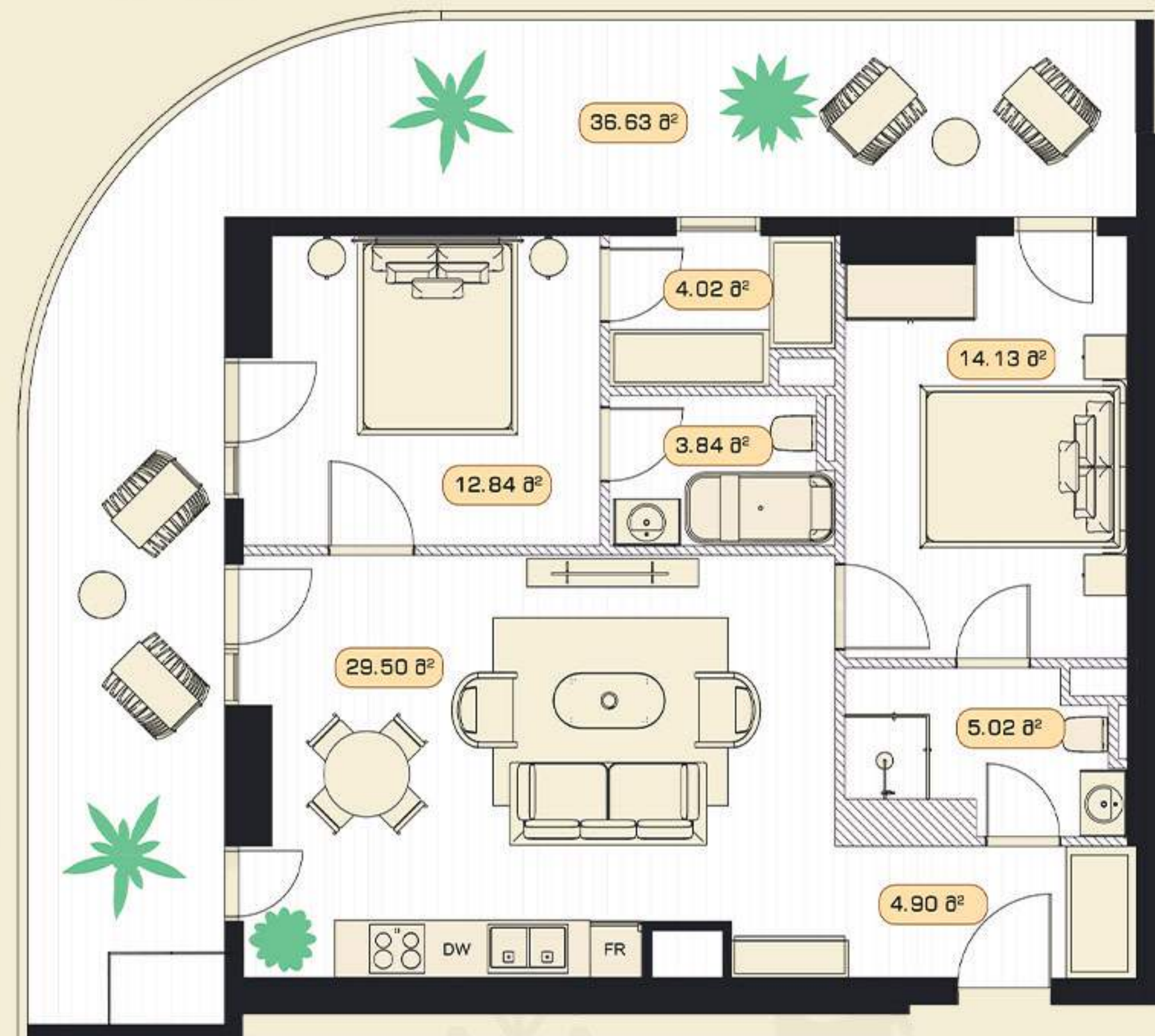
Bedroom#2: **12.84 sq.m**

WC#1: **5.02 sq.m**

WC#2: **3.84 sq.m**

Wardrobe Room: **4.02 sq.m**

Terrace: **36.63 sq.m**



APARTAMENT TYPE

Nishati

3 BEDROOM

Total Area : **117.63 sq.m**

Hall: **4.04 sq.m**

Living Room / Kitchen: **30.16 sq.m**

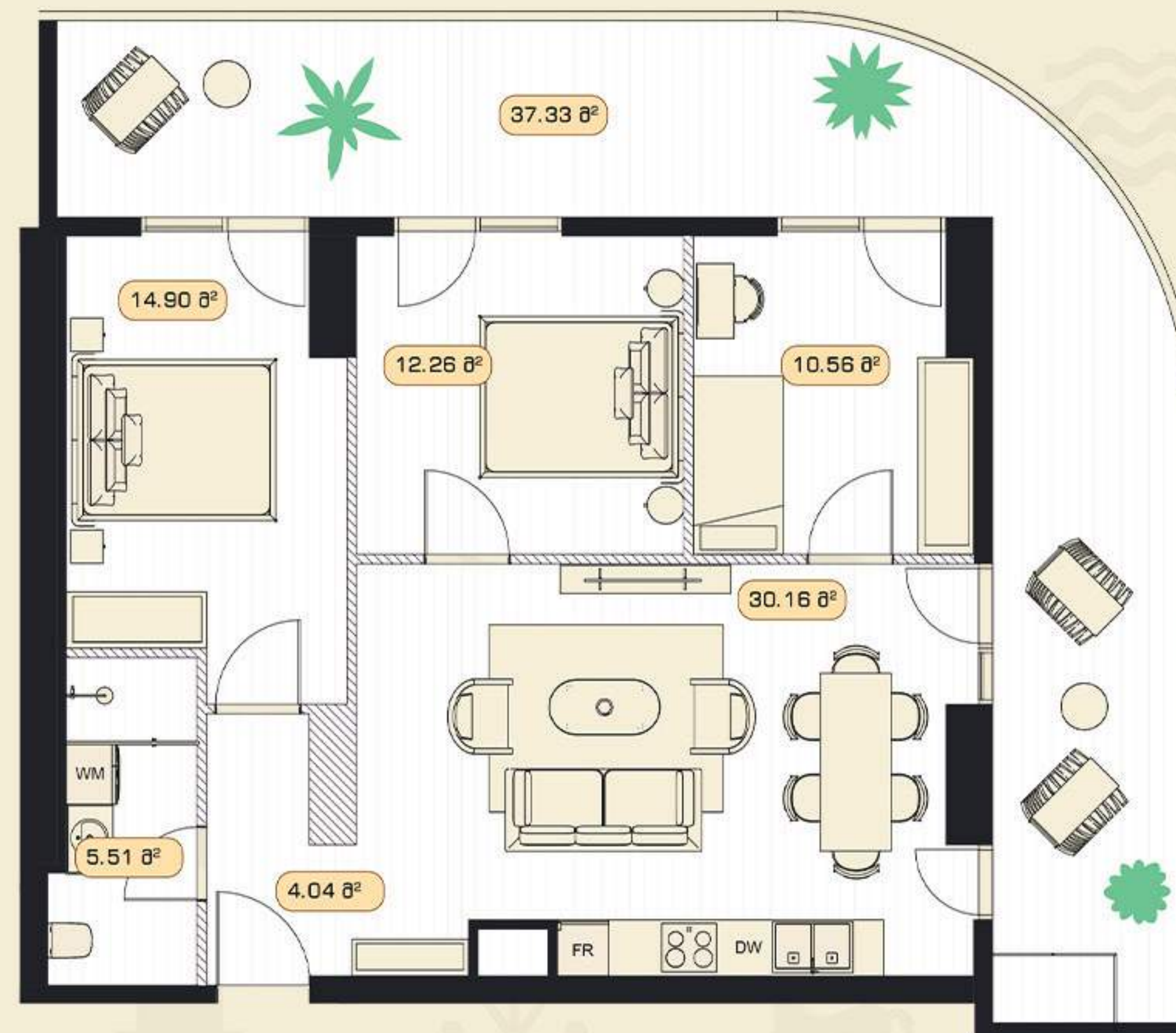
Bedroom#1: **14.90 sq.m**

Bedroom#2: **12.26 sq.m**

Bedroom#3: **10.56 sq.m**

WC: **5.51 sq.m**

Terrace: **37.33 sq.m**





+995 706 444 193

ge.housebook.deals

t.me/Housebooksales

wa.me/97144125007

