



THE ROYAL ITALIAN  
**Lifestyle**

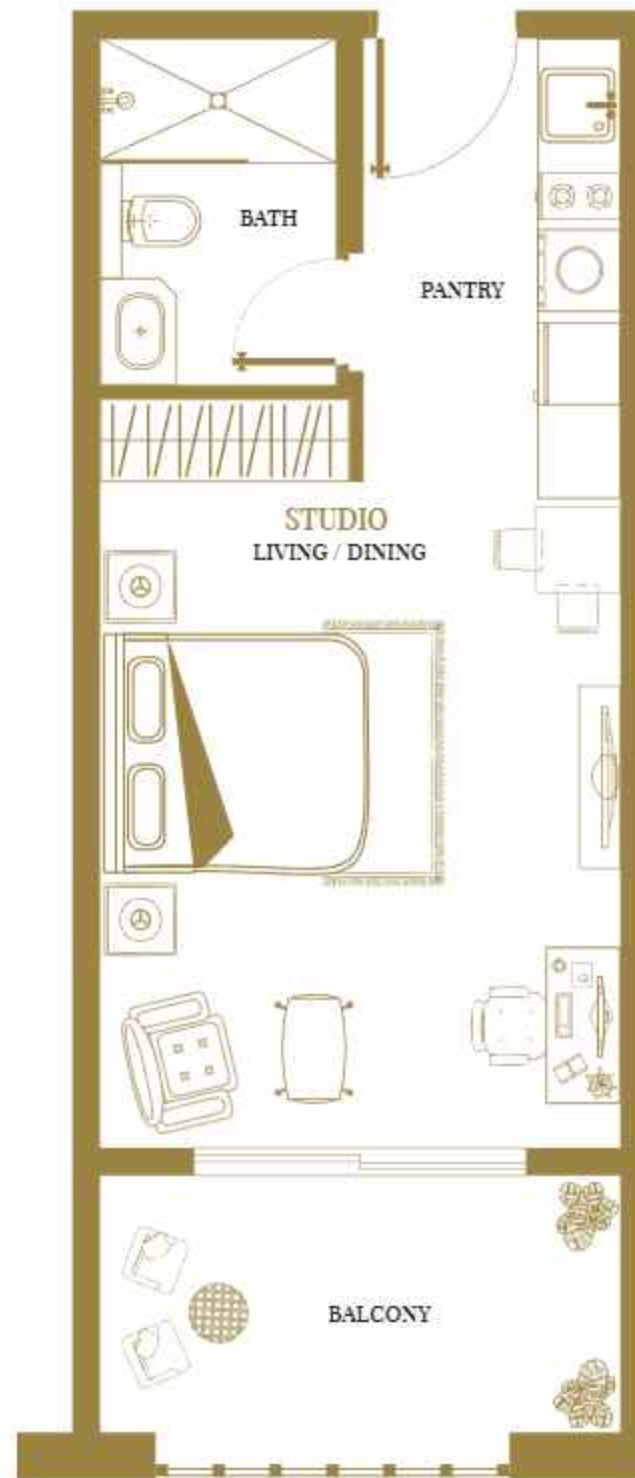
CRAFTED BY

VINCITORE





## EXECUTIVE Suite



Size: 420 - 535 Sq. ft.



Spacious Room with Classic Royal Italian designs



Designer Fixtures and Statement Lighting



Fully Fitted Kitchen with Premium European Brands

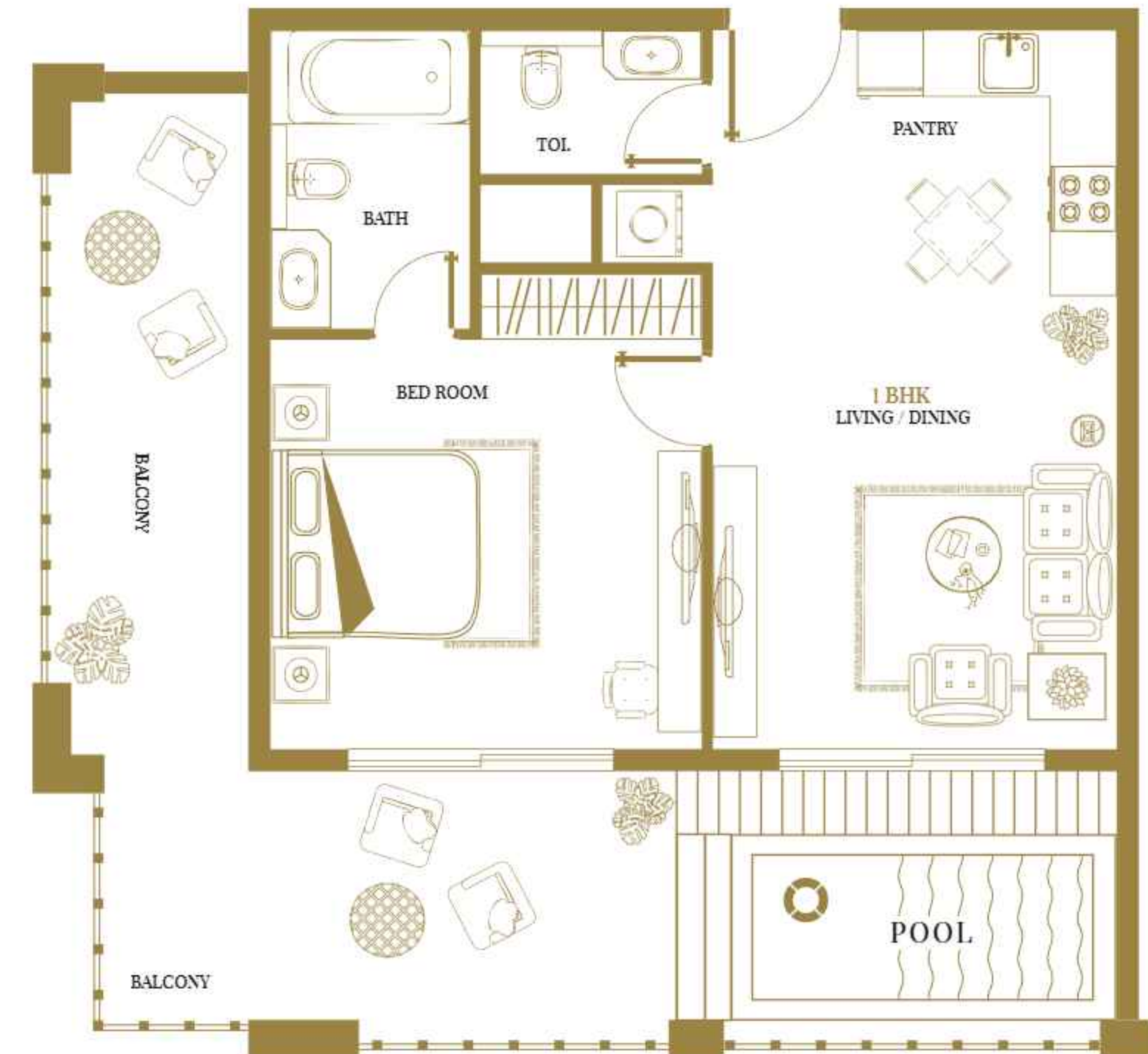


Fully Furnished & Fully Serviced



Private Lavish Sundeck

## PREMIUM CLUB Suites WITH PRIVATE POOL



Size: 839 - 1104 Sq. ft.



Fully Furnished Spacious Room with En suite Bathroom



Guest Powder Room



Royal Designer Fixtures and Statement Lighting



Fully Fitted Kitchen with Premium European Brands



Lavish Sundeck With Private Plunge pool





## EXECUTIVE

Quite

## PREMIUM CLUB

Quite

**WITH PRIVATE POOL**



THE NEW GOLD STANDARD OF BRANDED LUXURY Hospitality



# FIRST FLOOR



**DOLCE VITA** | *Residences*  
BY VINCITORE

- PALATIAL STUDIO
- LAVISH 1 BHK
- IMPERIAL 1 BHK
- ROYAL 2 BHK

**DOLCE VITA** | *Suites*  
BY VINCITORE

- EXECUTIVE SUITE
- PREMIUM CLUB SUITE



**THE ROYAL ITALIAN Lifestyle**







**DOLCE VITA** | *Residences*  
BY VINCITORE

- PALATIAL STUDIO
- LAVISH 1 BHK
- IMPERIAL 1 BHK
- ROYAL 2 BHK

**DOLCE VITA** | *Suites*  
BY VINCITORE

- EXECUTIVE SUITE
- PREMIUM CLUB SUITE



## SECOND FLOOR



THE ROYAL ITALIAN Lifestyle





DOLCE VITA | *Residences*  
BY VINCITORE

- PALATIAL STUDIO
- LAVISH 1 BHK
- IMPERIAL 1 BHK
- ROYAL 2 BHK

DOLCE VITA | *Suites*  
BY VINCITORE

- EXECUTIVE SUITE
- PREMIUM CLUB SUITE



THIRD FLOOR



THE ROYAL ITALIAN Lifestyle





**DOLCE VITA** | *Residences*  
BY VINCITORE

- PALATIAL STUDIO
- LAVISH 1 BHK
- IMPERIAL 1 BHK
- ROYAL 2 BHK

**DOLCE VITA** | *Suites*  
BY VINCITORE

- EXECUTIVE SUITE
- PREMIUM CLUB SUITE



## FOURTH FLOOR



THE ROYAL ITALIAN Lifestyle



# FIFTH FLOOR



**DOLCE VITA** | *Residences*  
BY VINCITORE

- PALATIAL STUDIO
- LAVISH 1 BHK
- IMPERIAL 1 BHK
- ROYAL 2 BHK

**DOLCE VITA** | *Suites*  
BY VINCITORE

- EXECUTIVE SUITE
- PREMIUM CLUB SUITE



**THE ROYAL ITALIAN Lifestyle**



# SIXTH FLOOR



**DOLCE VITA** | *Residences*  
BY VINCITORE

- PALATIAL STUDIO
- LAVISH 1 BHK
- IMPERIAL 1 BHK
- ROYAL 2 BHK

**DOLCE VITA** | *Suites*  
BY VINCITORE

- EXECUTIVE SUITE
- PREMIUM CLUB SUITE



**THE ROYAL ITALIAN Lifestyle**





DOLCE VITA | *Residences*  
BY VINCITORE

- PALATIAL STUDIO
- LAVISH 1 BHK
- IMPERIAL 1 BHK
- ROYAL 2 BHK

DOLCE VITA | *Suites*  
BY VINCITORE

- EXECUTIVE SUITE
- PREMIUM CLUB SUITE



SEVENTH FLOOR



THE ROYAL ITALIAN Lifestyle





**DOLCE VITA** | *Residences*  
BY VINCITORE

- PALATIAL STUDIO
- LAVISH 1 BHK
- IMPERIAL 1 BHK
- ROYAL 2 BHK

**DOLCE VITA** | *Suites*  
BY VINCITORE

- EXECUTIVE SUITE
- PREMIUM CLUB SUITE



**EIGHTH FLOOR**



**THE ROYAL ITALIAN Lifestyle**





**DOLCE VITA** | *Residences*  
BY VINCITORE

- PALATIAL STUDIO
- LAVISH 1 BHK
- IMPERIAL 1 BHK
- ROYAL 2 BHK

**DOLCE VITA** | *Suites*  
BY VINCITORE

- EXECUTIVE SUITE
- PREMIUM CLUB SUITE



**NINTH FLOOR**



**THE ROYAL ITALIAN Lifestyle**





DOLCE VITA | *Residences*  
BY VINCITORE

- PALATIAL STUDIO
- LAVISH 1 BHK
- IMPERIAL 1 BHK
- ROYAL 2 BHK

DOLCE VITA | *Suites*  
BY VINCITORE

- EXECUTIVE SUITE
- PREMIUM CLUB SUITE



TENTH FLOOR



THE ROYAL ITALIAN Lifestyle





**DOLCE VITA** | *Residences*  
BY VINCITORE

- PALATIAL STUDIO
- LAVISH 1 BHK
- IMPERIAL 1 BHK
- ROYAL 2 BHK

**DOLCE VITA** | *Suites*  
BY VINCITORE

- EXECUTIVE SUITE
- PREMIUM CLUB SUITE



**ELEVENTH FLOOR**



**THE ROYAL ITALIAN Lifestyle**





DOLCE VITA | *Residences*  
BY VINCITORE

- PALATIAL STUDIO
- LAVISH 1 BHK
- IMPERIAL 1 BHK
- ROYAL 2 BHK

DOLCE VITA | *Suites*  
BY VINCITORE

- EXECUTIVE SUITE
- PREMIUM CLUB SUITE



TWELFTH FLOOR



THE ROYAL ITALIAN Lifestyle





**DOLCE VITA** | *Residences*  
BY VINCITORE

- PALATIAL STUDIO
- LAVISH 1 BHK
- IMPERIAL 1 BHK
- ROYAL 2 BHK

**DOLCE VITA** | *Suites*  
BY VINCITORE

- EXECUTIVE SUITE
- PREMIUM CLUB SUITE



THIRTEENTH FLOOR



THE ROYAL ITALIAN Lifestyle





DOLCE VITA | *Residences*  
BY VINCITORE

- PALATIAL STUDIO
- LAVISH 1 BHK
- IMPERIAL 1 BHK
- ROYAL 2 BHK

DOLCE VITA | *Suites*  
BY VINCITORE

- EXECUTIVE SUITE
- PREMIUM CLUB SUITE



FOURTEENTH FLOOR



THE ROYAL ITALIAN Lifestyle





**DOLCE VITA** | *Residences*  
BY VINCITORE

- PALATIAL STUDIO
- LAVISH 1 BHK
- IMPERIAL 1 BHK
- ROYAL 2 BHK

**DOLCE VITA** | *Suites*  
BY VINCITORE

- EXECUTIVE SUITE
- PREMIUM CLUB SUITE



FIFTEENTH FLOOR



THE ROYAL ITALIAN Lifestyle





DOLCE VITA | *Residences*  
BY VINCITORE

- PALATIAL STUDIO
- LAVISH 1 BHK
- IMPERIAL 1 BHK
- ROYAL 2 BHK

DOLCE VITA | *Suites*  
BY VINCITORE

- EXECUTIVE SUITE
- PREMIUM CLUB SUITE



SIXTEENTH FLOOR



THE ROYAL ITALIAN Lifestyle



# Thank You



## DISCLAIMER BY VINCITORE PREMIUM REAL ESTATE DEVELOPMENT LLC

1. Vincitore is the registered Brand and no permission is given by the developer in respect of the use of any brand marks, information or images. You are notified that use of any marks, images or information elsewhere without the consent of the Developer will likely constitute an infringement of the owner's intellectual property rights and action may be taken accordingly to enforce the owner's right. 2. The Information presented herein is proposed and should not be relied upon as a basis for purchasing since all elements are subject to change, refinement or elimination by the developer without notice. Verify all details before purchasing. 3. This presentation is not an offering nor an offer to sell nor a solicitation of offers to purchase. It is provided solely for informational purposes and is not intended to constitute an advertisement in any jurisdiction. In no event will the developer be liable for any loss or damage including without limitation, indirect or consequential loss or damage, or any loss or damage whatsoever arising from loss of data or profits arising out of, or in connection with, the use of this catalogue. 4. All information contained herein is subject to change, and no representations are made as to the accuracy of such information. Neither the information and materials described herein, nor any communication made or given in connection with any of the foregoing, may be deemed to constitute any form of warranty or may otherwise be relied upon by any person or entity for any reason whatsoever. 5. The plans and information presented herein are proposed and subject to modification or elimination by the developer without notice. All plans and information are subject to governmental approvals. Unobstructed views are not guaranteed. 6. The artist renderings and floor plans are provided for illustrative purposes only and should not be relied upon as a basis for purchasing since all elements are subject to change, refinement or elimination without notice. Finish details should be verified before purchasing. 7. Maps, floor plans and models are not to scale. Any references to square footage information is approximate only and should not be relied upon as a basis for purchasing. Floor plans and models are provided for illustrative and marketing purposes only and are subject to change or refinement without notice by the developer. Furniture layouts are for illustrative purposes only. Verify all plan details before purchasing. 8. Proposed services, amenities, fixtures and finishes identified herein are subject to change, modification or elimination by the developer without notice. Proposed services, amenities, fixtures and finishes identified herein may have additional charges, restrictions, or terms and conditions that apply. Please refer to the Sales and Purchase Documents for more information. All items including furniture & fixture, fixed furniture, pictures, display items, interior decoration, art effects, wall decoration, special wall paints/finishes, movable items and wallpapers are not included in the offers. 9. The unauthorized use or reproduction of plans and information is strictly prohibited without express written consent of the developer. The user agrees to indemnify and defend the developer and its parents, subsidiaries, affiliates, directors, officers, consultants, and employees and hold them harmless from any and all claims and expenses, including attorney's fees, arising from user's misuse of this brochure or Service. 10. Refer Sales and Purchase Documents for more information.

## VINCITORE PREMIUM REAL ESTATE DEVELOPMENT LLC

P.O. Box: 123519, Dubai, UAE, Toll Free : 800 BRAND ( 27263) Tel: +971 4 324 2263,

Fax: + 971 4 324 2273, e-mail: enquiry@vincitorerealty.com

[www.vincitorerealty.com](http://www.vincitorerealty.com)





**housebook** Real Estate Company  
since 2012 in the UAE

**+971 (4) 412-5007**

Managers of partnerships



Alevtina Kapustina



Svetlana Guseva

## Office

Housebook Real Estate LCC

Dubai Marina, office 2502-01, Dubai, UAE

Company license: 1128098

[ae.housebook.deals](https://ae.housebook.deals)

[partner@housebook.ae](mailto:partner@housebook.ae)

