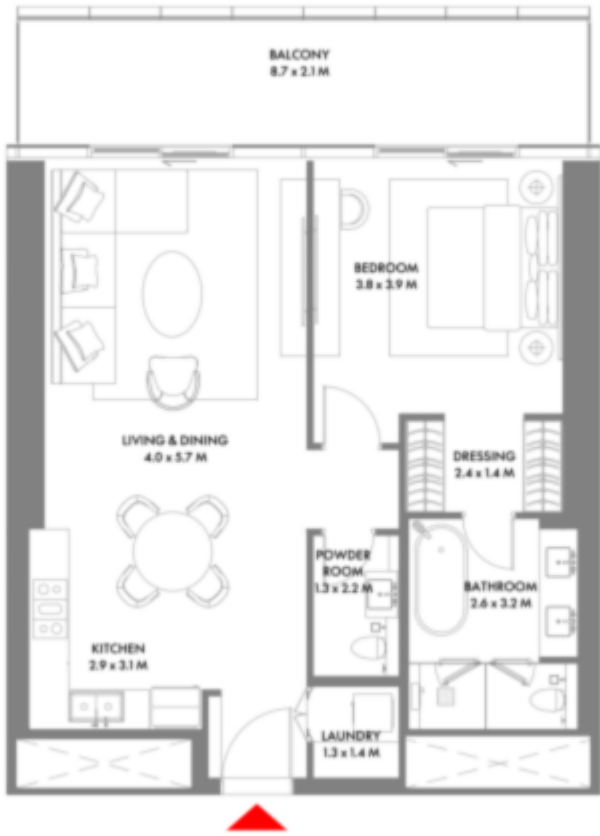




TOWER 2

UNIT PLANS





1 Bedroom A

Unit Area: 83.28 Sqm (897 Sqft) | Balcony Area: 17.36 Sqm (187 Sqft) | Total Area: 100.64 Sqm (1,084 Sqft)

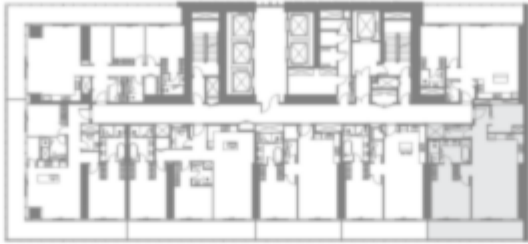
1-Measurements are indicative 'finish to finish' in Metric & Imperial excluding construction tolerance. 2-Plot/unit dimensions may vary from brochure, and unit types/plans may exist as mirrored versions; 3-All images used are for illustrative purposes only. 4-Unless stated otherwise, all fittings and interior decorative items shown are for illustrative purposes only. 5-The developer reserves the right to make alterations, at its absolute discretion, without any liability whatsoever up to the final 'as built' status.



1 Bedroom B

Unit Area: 79.98 Sqm (861 Sqft) | Balcony Area: 20.87 Sqm (225 Sqft) | Total Area: 100.85 Sqm (1,086 Sqft)

1-Measurements are indicative 'finish to finish' in Metric & Imperial excluding construction tolerance. 2-Plot/unit dimensions may vary from brochure, and unit types/plans may exist as mirrored versions; 3-All images used are for illustrative purposes only. 4-Unless stated otherwise, all fittings and interior decorative items shown are for illustrative purposes only. 5-The developer reserves the right to make alterations, at its absolute discretion, without any liability whatsoever up to the final 'as built' status.



1ST TO 10TH FLOOR

1 Bedroom C

Unit Area: 101.65 Sqm (1,095 Sqft) | **Balcony Area:** 19.69 Sqm (212 Sqft) | **Total Area:** 121.34 Sqm (1,307 Sqft)

1-Measurements are indicative 'finish to finish' in Metric & Imperial excluding construction tolerance. 2-Plot/unit dimensions may vary from brochure, and unit types/plans may exist as mirrored versions; 3-All images used are for illustrative purposes only. 4-Unless stated otherwise, all fittings and interior decorative items shown are for illustrative purposes only. 5-The developer reserves the right to make alterations, at its absolute discretion, without any liability whatsoever up to the final 'as built' status.



6TH TO 10TH & 14TH TO 19TH FLOOR

1 Bedroom D

Unit Area: 78.53 Sqm (846 Sqft) | **Balcony Area:** 19.86 Sqm (214 Sqft) | **Total Area:** 98.39 Sqm (1,060 Sqft)

1-Measurements are indicative 'finish to finish' in Metric & Imperial excluding construction tolerance. 2-Plot/unit dimensions may vary from brochure, and unit types/plans may exist as mirrored versions; 3-All images used are for illustrative purposes only. 4-Unless stated otherwise, all fittings and interior decorative items shown are for illustrative purposes only. 5-The developer reserves the right to make alterations, at its absolute discretion, without any liability whatsoever up to the final 'as built' status.



6TH TO 10TH & 14TH TO 19TH FLOOR

1 Bedroom E

Unit Area: 80.20 Sqm (864 Sqft) | Balcony Area: 36.93 Sqm (397 Sqft) | Total Area: 117.13 Sqm (1,261 Sqft)

1-Measurements are indicative 'finish to finish' in Metric & Imperial excluding construction tolerance. 2-Plot/unit dimensions may vary from brochure, and unit types/plans may exist as mirrored versions; 3-All images used are for illustrative purposes only. 4-Unless stated otherwise, all fittings and interior decorative items shown are for illustrative purposes only. 5-The developer reserves the right to make alterations, at its absolute discretion, without any liability whatsoever up to the final 'as built' status.



1ST TO 9TH, 14TH TO 21ST & 23RD TO 27TH FLOOR

2 Bedroom A

Unit Area: 122.93 Sqm (1,324 Sqft) | Balcony Area: 25.97 Sqm (279 Sqft) | Total Area: 148.90 Sqm (1,603 Sqft)

1-Measurements are indicative 'finish to finish' in Metric & Imperial excluding construction tolerance. 2-Plot/unit dimensions may vary from brochure, and unit types/plans may exist as mirrored versions; 3-All images used are for illustrative purposes only. 4-Unless stated otherwise, all fittings and interior decorative items shown are for illustrative purposes only. 5-The developer reserves the right to make alterations, at its absolute discretion, without any liability whatsoever up to the final 'as built' status.

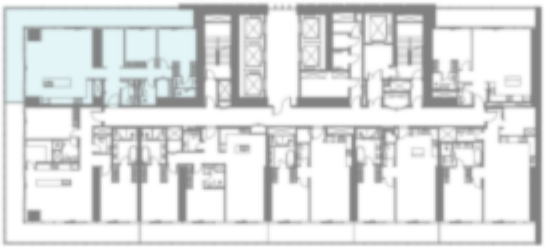
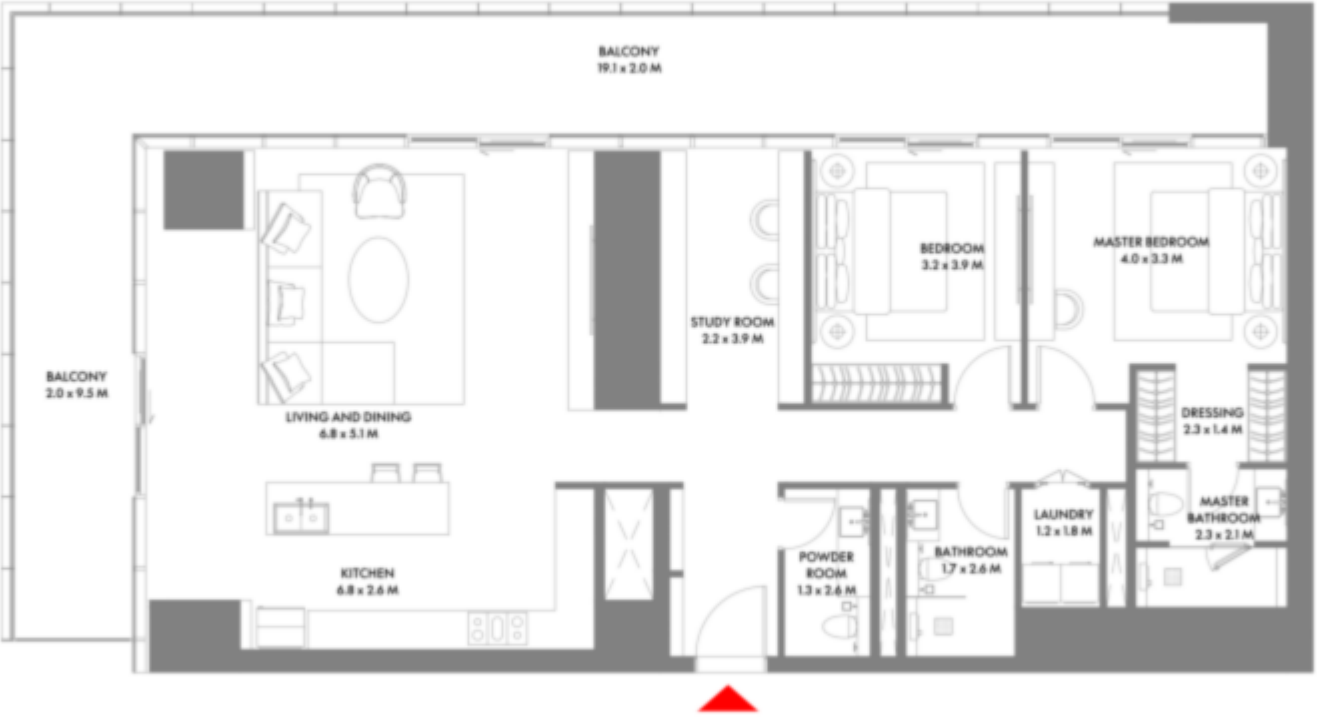


1ST TO 5TH FLOOR

2 Bedroom B

Unit Area: 134.28 Sqm (1,446 Sqft) | Balcony Area: 50.85 Sqm (547 Sqft) | Total Area: 185.13 Sqm (1,993 Sqft)

1-Measurements are indicative 'finish to finish' in Metric & Imperial excluding construction tolerance. 2-Plot/unit dimensions may vary from brochure, and unit types/plans may exist as mirrored versions; 3-All images used are for illustrative purposes only. 4-Unless stated otherwise, all fittings and interior decorative items shown are for illustrative purposes only. 5-The developer reserves the right to make alterations, at its absolute discretion, without any liability whatsoever up to the final 'as built' status.

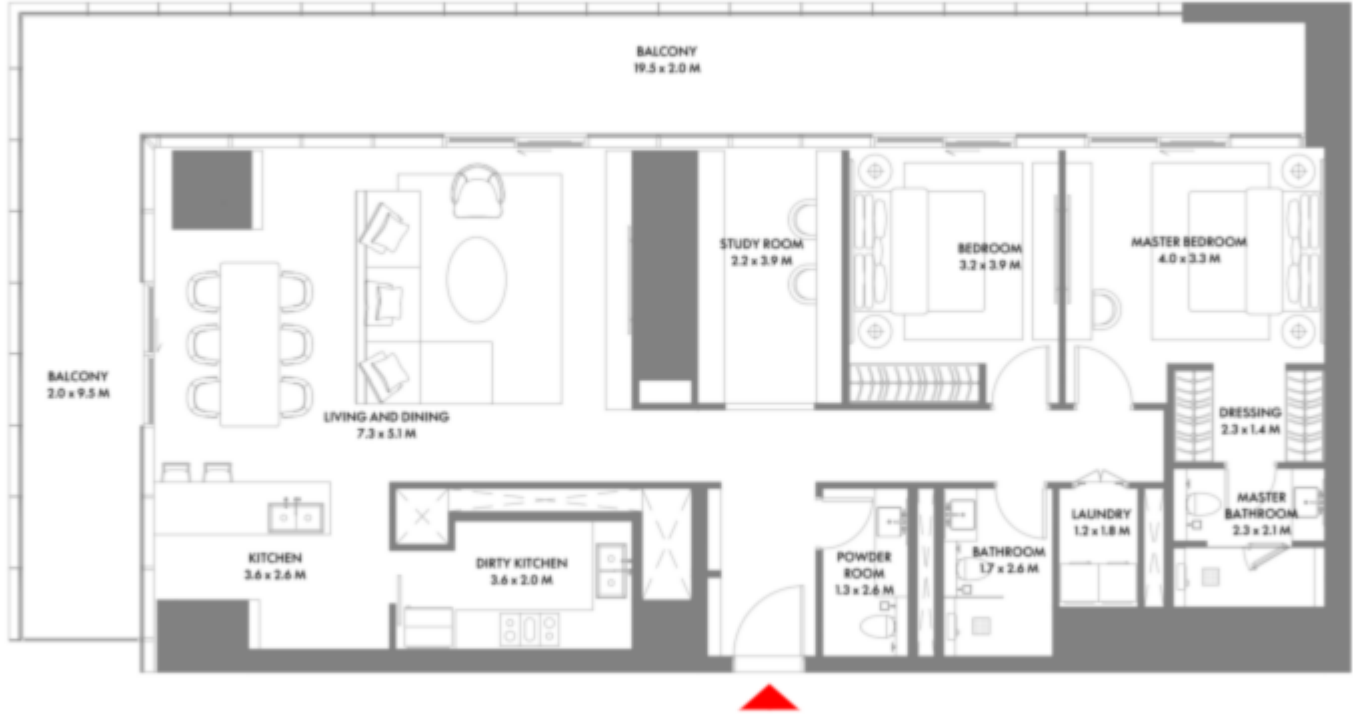


1ST TO 4TH FLOOR

2 Bedroom C

Unit Area: 137.87 Sqm (1,485 Sqft) | Balcony Area: 51.56 Sqm (555 Sqft) | Total Area: 189.43 Sqm (2,040 Sqft)

1-Measurements are indicative 'finish to finish' in Metric & Imperial excluding construction tolerance. 2-Plot/unit dimensions may vary from brochure, and unit types/plans may exist as mirrored versions; 3-All images used are for illustrative purposes only. 4-Unless stated otherwise, all fittings and interior decorative items shown are for illustrative purposes only. 5-The developer reserves the right to make alterations, at its absolute discretion, without any liability whatsoever up to the final 'as built' status.

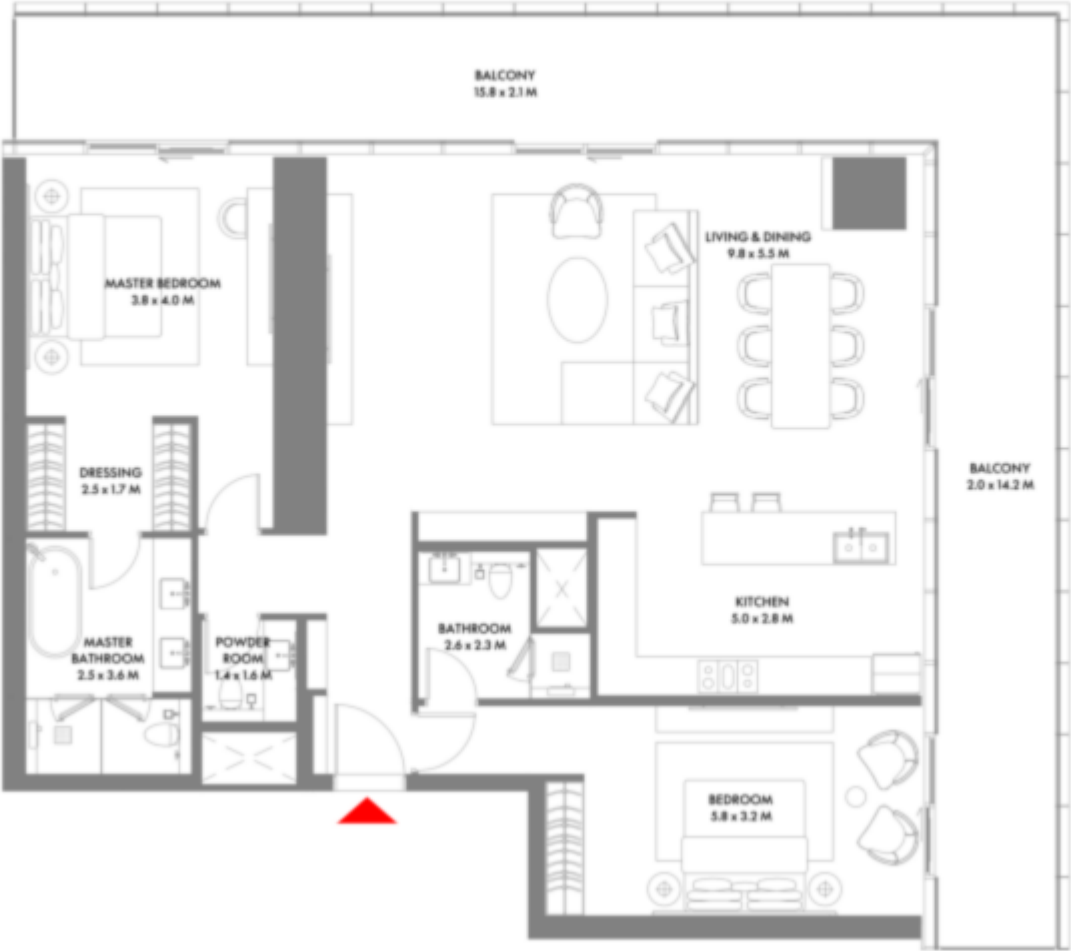


5TH FLOOR

2 Bedroom D

Unit Area: 139.33 Sqm (1,500 Sqft) | **Balcony Area:** 52.40 Sqm (564 Sqft) | **Total Area:** 191.73 Sqm (2,064 Sqft)

1-Measurements are indicative 'finish to finish' in Metric & Imperial excluding construction tolerance. 2-Plot/unit dimensions may vary from brochure, and unit types/plans may exist as mirrored versions; 3-All images used are for illustrative purposes only. 4-Unless stated otherwise, all fittings and interior decorative items shown are for illustrative purposes only. 5-The developer reserves the right to make alterations, at its absolute discretion, without any liability whatsoever up to the final 'as built' status.

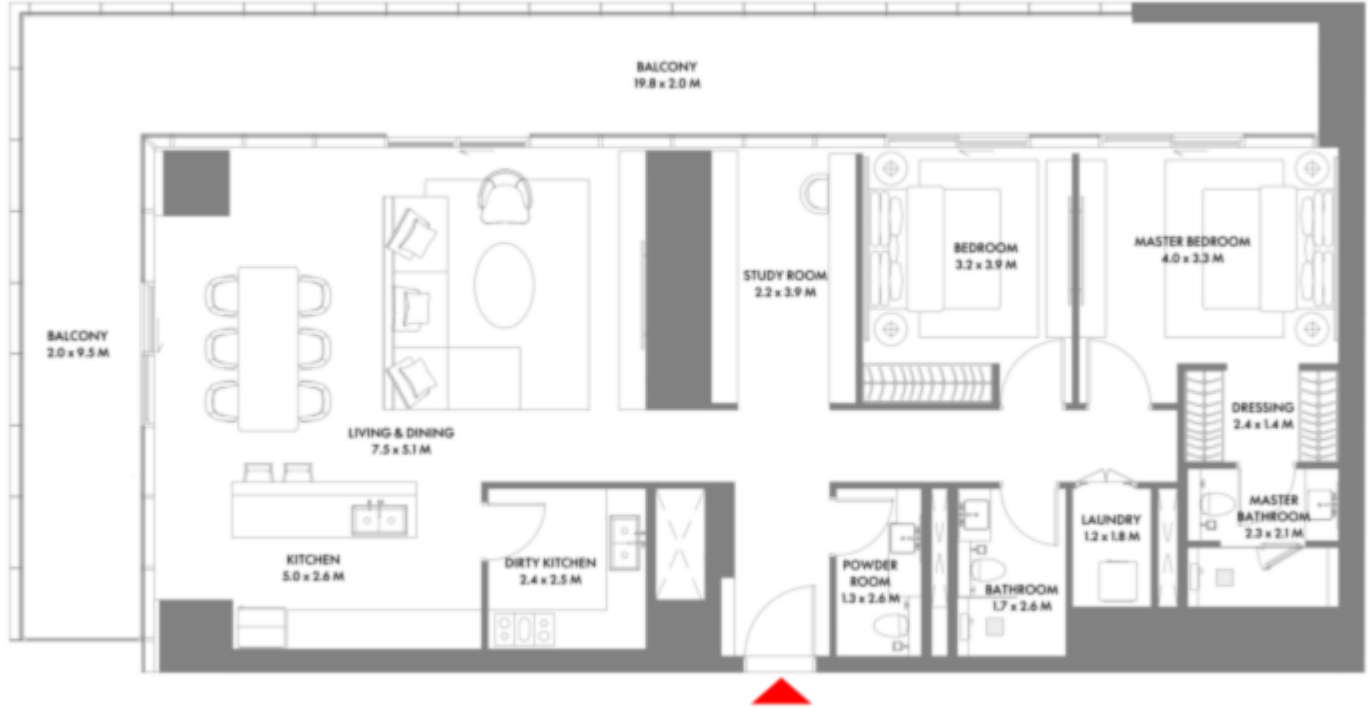


6TH TO 9TH FLOOR

2 Bedroom E

Unit Area: 146.74 Sqm (1,580 Sqft) | **Balcony Area:** 54.62 Sqm (588 Sqft) | **Total Area:** 201.36 Sqm (2,168 Sqft)

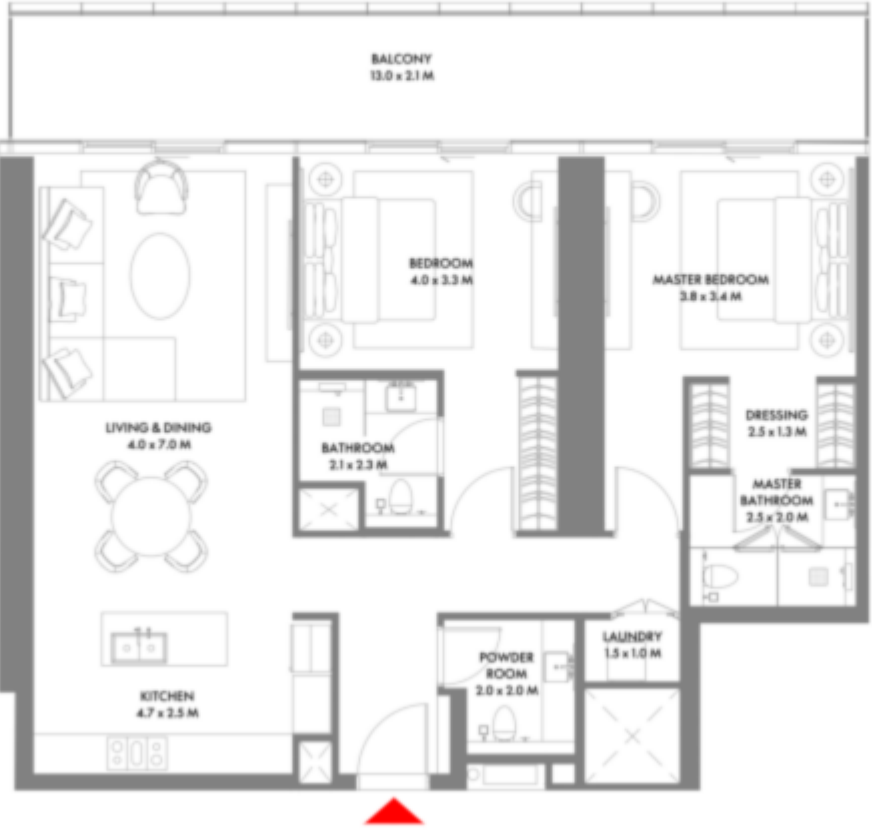
1-Measurements are indicative 'finish to finish' in Metric & Imperial excluding construction tolerance. 2-Plot/unit dimensions may vary from brochure, and unit types/plans may exist as mirrored versions; 3-All images used are for illustrative purposes only. 4-Unless stated otherwise, all fittings and interior decorative items shown are for illustrative purposes only. 5-The developer reserves the right to make alterations, at its absolute discretion, without any liability whatsoever up to the final 'as built' status.



2 Bedroom F

Unit Area: 142.81 Sqm (1,538 Sqft) | Balcony Area: 52.89 Sqm (569 Sqft) | Total Area: 195.70 Sqm (2,107 Sqft)

1-Measurements are indicative 'finish to finish' in Metric & Imperial excluding construction tolerance. 2-Plot/unit dimensions may vary from brochure, and unit types/plans may exist as mirrored versions; 3-All images used are for illustrative purposes only. 4-Unless stated otherwise, all fittings and interior decorative items shown are for illustrative purposes only. 5-The developer reserves the right to make alterations, at its absolute discretion, without any liability whatsoever up to the final 'as built' status.



2 Bedroom G

Unit Area: 115.96 Sqm (1,249 Sqft) | Balcony Area: 25.97 Sqm (279 Sqft) | Total Area: 141.93 Sqm (1,528 Sqft)

1-Measurements are indicative 'finish to finish' in Metric & Imperial excluding construction tolerance. 2-Plot/unit dimensions may vary from brochure, and unit types/plans may exist as mirrored versions; 3-All images used are for illustrative purposes only. 4-Unless stated otherwise, all fittings and interior decorative items shown are for illustrative purposes only. 5-The developer reserves the right to make alterations, at its absolute discretion, without any liability whatsoever up to the final 'as built' status.



10TH FLOOR

2 Bedroom H

Unit Area: 144.84 Sqm (1,560 Sqft) | Balcony Area: 55.51 Sqm (597 Sqft) | Total Area: 200.35 Sqm (2,157 Sqft)

1-Measurements are indicative 'finish to finish' in Metric & Imperial excluding construction tolerance. 2-Plot/unit dimensions may vary from brochure, and unit types/plans may exist as mirrored versions; 3-All images used are for illustrative purposes only. 4-Unless stated otherwise, all fittings and interior decorative items shown are for illustrative purposes only. 5-The developer reserves the right to make alterations, at its absolute discretion, without any liability whatsoever up to the final 'as built' status.

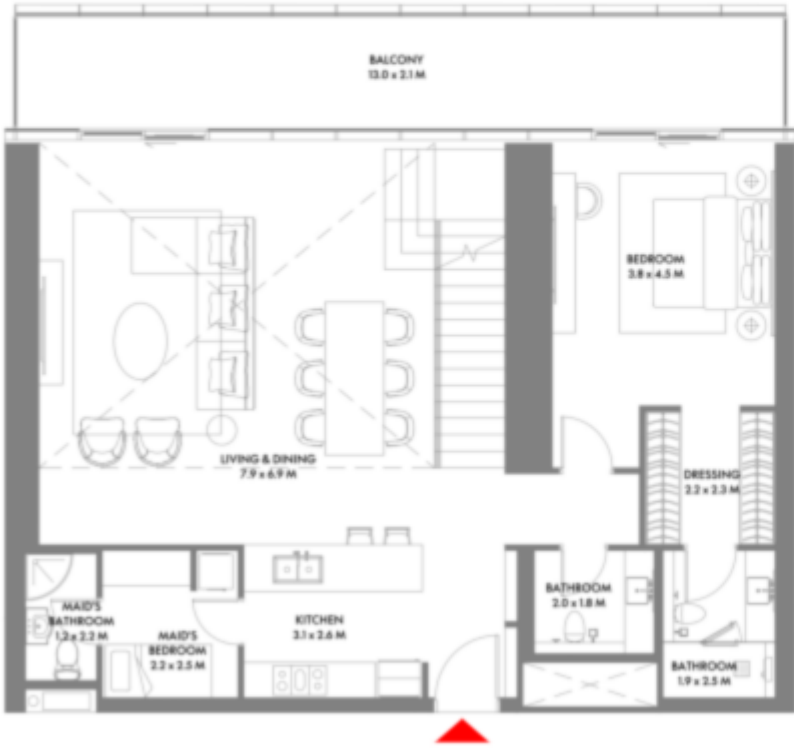


10TH FLOOR

2 Bedroom I

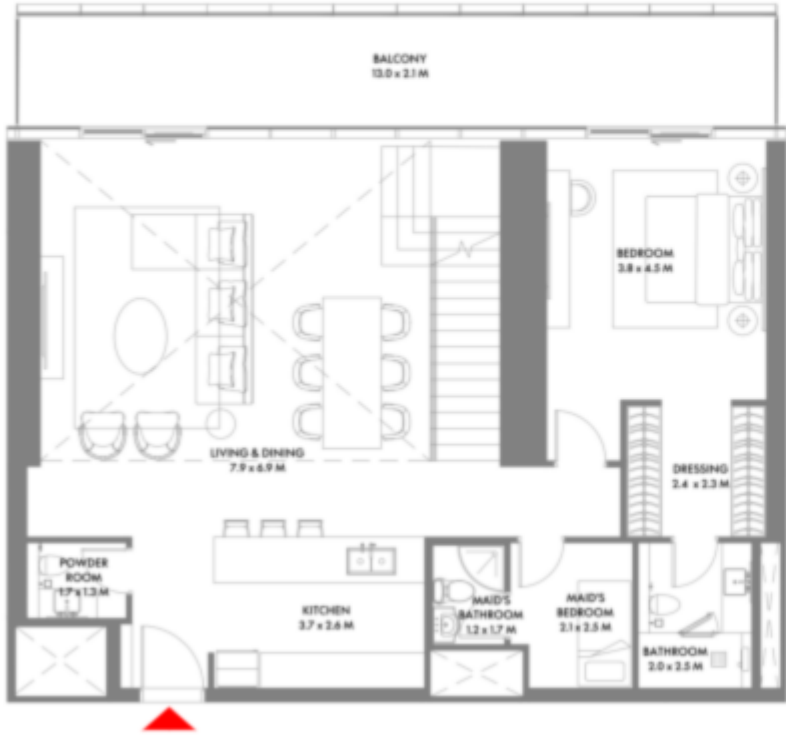
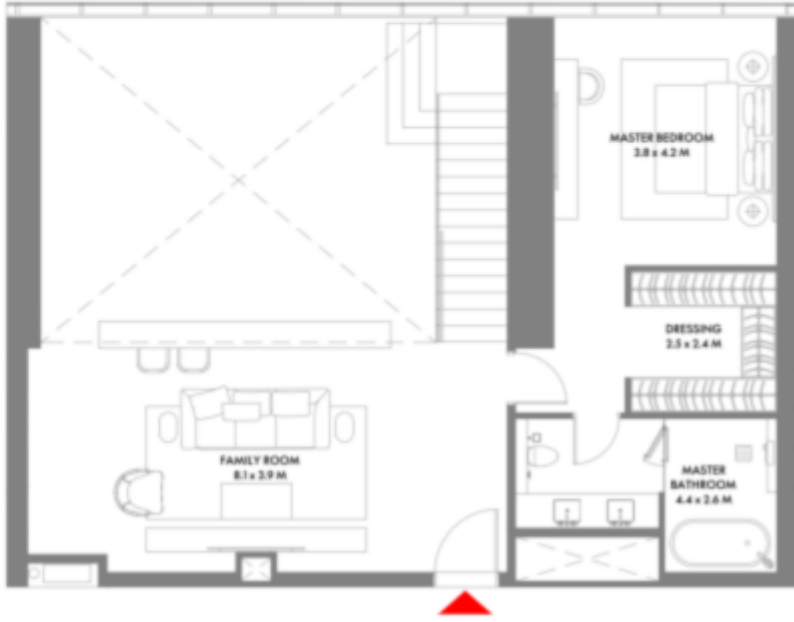
Unit Area: 114.88 Sqm (1,237 Sqft) | Balcony Area: 26.04 Sqm (280 Sqft) | Total Area: 140.92 Sqm (1,517 Sqft)

1-Measurements are indicative 'finish to finish' in Metric & Imperial excluding construction tolerance. 2-Plot/unit dimensions may vary from brochure, and unit types/plans may exist as mirrored versions; 3-All images used are for illustrative purposes only. 4-Unless stated otherwise, all fittings and interior decorative items shown are for illustrative purposes only. 5-The developer reserves the right to make alterations, at its absolute discretion, without any liability whatsoever up to the final 'as built' status.



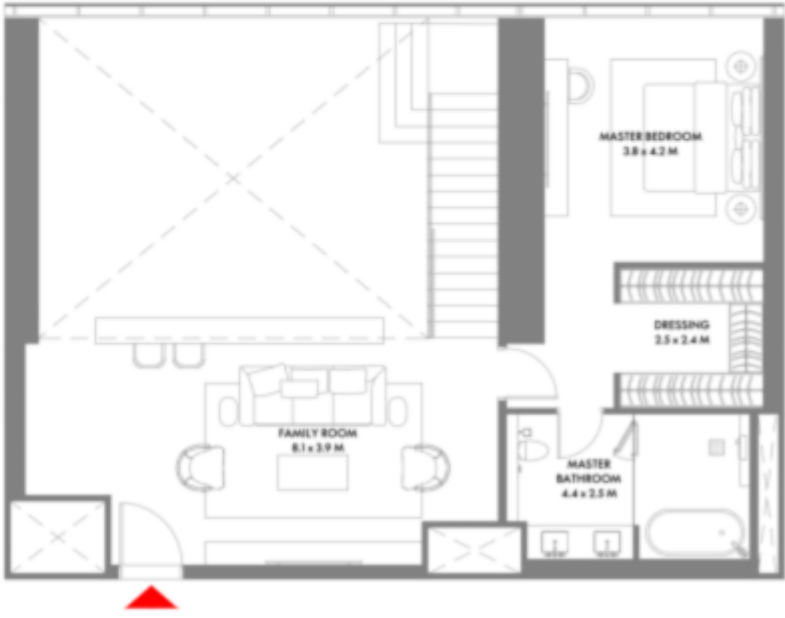
2 Bedroom Duplex A

Unit Area: 211.55 Sqm (2,278 Sqft) | Balcony Area: 25.81 Sqm (277 Sqft) | Total Area: 237.36 Sqm (2,555 Sqft)



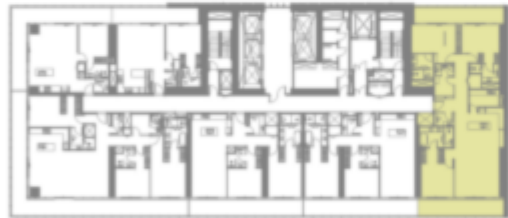
2 Bedroom Duplex B

Unit Area: 207.94 Sqm (2,239 Sqft) | Balcony Area: 25.81 Sqm (278 Sqft) | Total Area: 233.75 Sqm (2,517 Sqft)



1-Measurements are indicative 'finish to finish' in Metric & Imperial excluding construction tolerance. 2-Plot/unit dimensions may vary from brochure, and unit types/plans may exist as mirrored versions; 3-All images used are for illustrative purposes only. 4-Unless stated otherwise, all fittings and interior decorative items shown are for illustrative purposes only. 5-The developer reserves the right to make alterations, at its absolute discretion, without any liability whatsoever up to the final 'as built' status.

1-Measurements are indicative 'finish to finish' in Metric & Imperial excluding construction tolerance. 2-Plot/unit dimensions may vary from brochure, and unit types/plans may exist as mirrored versions; 3-All images used are for illustrative purposes only. 4-Unless stated otherwise, all fittings and interior decorative items shown are for illustrative purposes only. 5-The developer reserves the right to make alterations, at its absolute discretion, without any liability whatsoever up to the final 'as built' status.



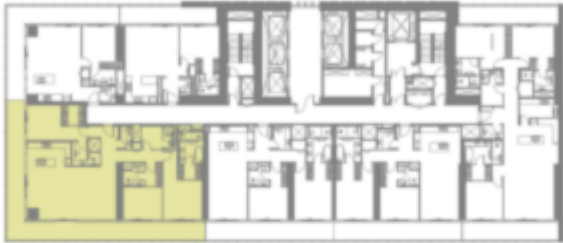
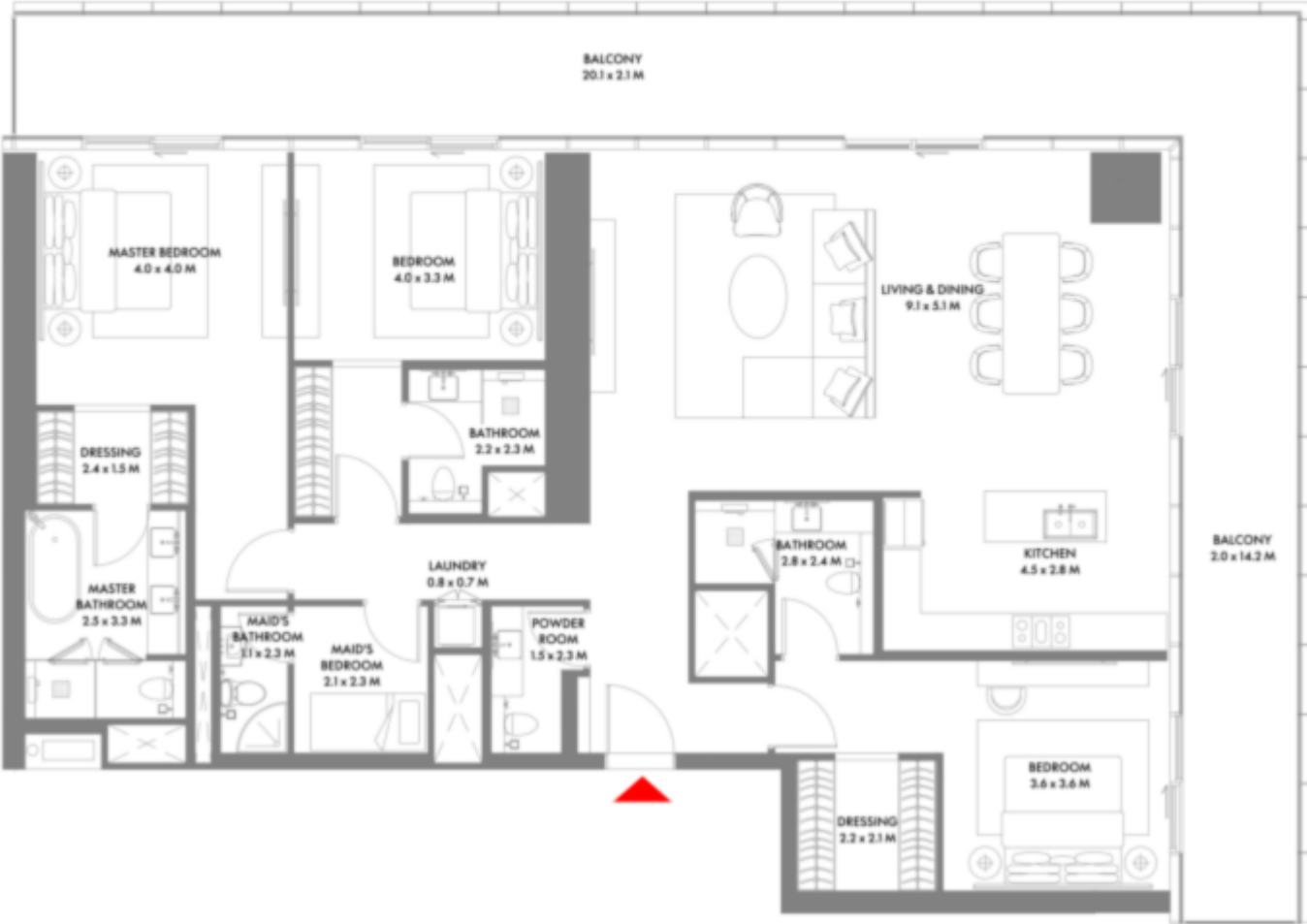
14TH TO 27TH FLOOR



3 Bedroom A

Unit Area: 189.83 Sqm (2,044 Sqft) | Balcony Area: 40.47 Sqm (435 Sqft) | Total Area: 230.30 Sqm (2,479 Sqft)

1-Measurements are indicative 'finish to finish' in Metric & Imperial excluding construction tolerance. 2-Plot/unit dimensions may vary from brochure, and unit types/plans may exist as mirrored versions; 3-All images used are for illustrative purposes only. 4-Unless stated otherwise, all fittings and interior decorative items shown are for illustrative purposes only. 5-The developer reserves the right to make alterations, at its absolute discretion, without any liability whatsoever up to the final 'as built' status.



14TH TO 19TH FLOOR

3 Bedroom B

Unit Area: 184.76 Sqm (1,989 Sqft) | Balcony Area: 62.89 Sqm (677 Sqft) | Total Area: 247.65 Sqm (2,666 Sqft)

1-Measurements are indicative 'finish to finish' in Metric & Imperial excluding construction tolerance. 2-Plot/unit dimensions may vary from brochure, and unit types/plans may exist as mirrored versions; 3-All images used are for illustrative purposes only. 4-Unless stated otherwise, all fittings and interior decorative items shown are for illustrative purposes only. 5-The developer reserves the right to make alterations, at its absolute discretion, without any liability whatsoever up to the final 'as built' status.



29TH TO 33RD FLOOR

3 Bedroom C

Unit Area: 178.13 Sqm (1,918 Sqft) | Balcony Area: 37.69 Sqm (406 Sqft) | Total Area: 215.82 Sqm (2,324 Sqft)

1-Measurements are indicative 'finish to finish' in Metric & Imperial excluding construction tolerance. 2-Plot/unit dimensions may vary from brochure, and unit types/plans may exist as mirrored versions; 3-All images used are for illustrative purposes only. 4-Unless stated otherwise, all fittings and interior decorative items shown are for illustrative purposes only. 5-The developer reserves the right to make alterations, at its absolute discretion, without any liability whatsoever up to the final 'as built' status.

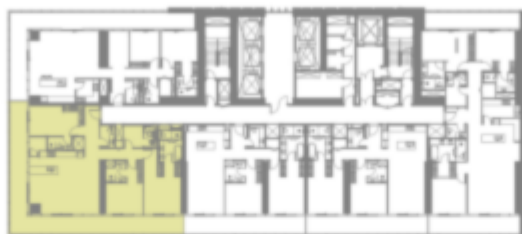


29TH TO 33RD FLOOR

3 Bedroom D

Unit Area: 223.61 Sqm (2,407 Sqft) | Balcony Area: 91.18 Sqm (982 Sqft) | Total Area: 314.79 Sqm (3,389 Sqft)

1-Measurements are indicative 'finish to finish' in Metric & Imperial excluding construction tolerance. 2-Plot/unit dimensions may vary from brochure, and unit types/plans may exist as mirrored versions; 3-All images used are for illustrative purposes only. 4-Unless stated otherwise, all fittings and interior decorative items shown are for illustrative purposes only. 5-The developer reserves the right to make alterations, at its absolute discretion, without any liability whatsoever up to the final 'as built' status.

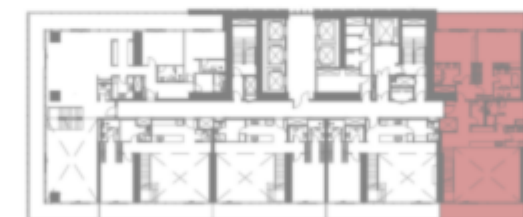


20TH TO 27TH FLOOR

3 Bedroom E

Unit Area: 173.10 Sqm (1,864 Sqft) | Balcony Area: 59.82 Sqm (644 Sqft) | Total Area: 232.92 Sqm (2,508 Sqft)

1-Measurements are indicative 'finish to finish' in Metric & Imperial excluding construction tolerance. 2-Plot/unit dimensions may vary from brochure, and unit types/plans may exist as mirrored versions; 3-All images used are for illustrative purposes only. 4-Unless stated otherwise, all fittings and interior decorative items shown are for illustrative purposes only. 5-The developer reserves the right to make alterations, at its absolute discretion, without any liability whatsoever up to the final 'as built' status.



11TH FLOOR



12TH FLOOR



3 Bedroom Duplex A

Unit Area: 336.81 Sqm (3,626 Sqft) | Balcony Area: 60.56 Sqm (652 Sqft) | Total Area: 397.37 Sqm (4,278 Sqft)

1-Measurements are indicative 'finish to finish' in Metric & Imperial excluding construction tolerance. 2-Plot/unit dimensions may vary from brochure, and unit types/plans may exist as mirrored versions; 3-All images used are for illustrative purposes only. 4-Unless stated otherwise, all fittings and interior decorative items shown are for illustrative purposes only. 5-The developer reserves the right to make alterations, at its absolute discretion, without any liability whatsoever up to the final 'as built' status.



3 Bedroom Duplex B

Unit Area: 435.88 Sqm (4,692 Sqft) | Balcony Area: 96.48 Sqm (1,039 Sqft) | Total Area: 532.36 Sqm (5,731 Sqft)

1-Measurements are indicative 'finish to finish' in Metric & Imperial excluding construction tolerance. 2-Plot/unit dimensions may vary from brochure, and unit types/plans may exist as mirrored versions; 3-All images used are for illustrative purposes only. 4-Unless stated otherwise, all fittings and interior decorative items shown are for illustrative purposes only. 5-The developer reserves the right to make alterations, at its absolute discretion, without any liability whatsoever up to the final 'as built' status.

4 Bedroom A

Unit Area: 322.01 Sqm (3,467 Sqft) | Balcony Area: 66.24 Sqm (713 Sqft) | Total Area: 388.25 Sqm (4,180 Sqft)

1-Measurements are indicative 'finish to finish' in Metric & Imperial excluding construction tolerance. 2-Plot/unit dimensions may vary from brochure, and unit types/plans may exist as mirrored versions; 3-All images used are for illustrative purposes only. 4-Unless stated otherwise, all fittings and interior decorative items shown are for illustrative purposes only. 5-The developer reserves the right to make alterations, at its absolute discretion, without any liability whatsoever up to the final 'as built' status.



4 Bedroom B

Unit Area: 310.48 Sqm (3,343 Sqft) | Balcony Area: 66.24 Sqm (713 Sqft) | Total Area: 376.72 Sqm (4,056 Sqft)

1-Measurements are indicative 'finish to finish' in Metric & Imperial excluding construction tolerance. 2-Plot/unit dimensions may vary from brochure, and unit types/plans may exist as mirrored versions; 3-All images used are for illustrative purposes only. 4-Unless stated otherwise, all fittings and interior decorative items shown are for illustrative purposes only. 5-The developer reserves the right to make alterations, at its absolute discretion, without any liability whatsoever up to the final 'as built' status.



5 Bedroom Penthouse

Unit Area: 385.20 Sqm (4,147 Sqft) | Balcony Area: 123.14 Sqm (1,325 Sqft) | Total Area: 508.34 Sqm (5,472 Sqft)

1-Measurements are indicative 'finish to finish' in Metric & Imperial excluding construction tolerance. 2-Plot/unit dimensions may vary from brochure, and unit types/plans may exist as mirrored versions; 3-All images used are for illustrative purposes only. 4-Unless stated otherwise, all fittings and interior decorative items shown are for illustrative purposes only. 5-The developer reserves the right to make alterations, at its absolute discretion, without any liability whatsoever up to the final 'as built' status.



housebook Real Estate Company
since 2012 in the UAE

+971 (4) 412-5007

Managers of partnerships



Alevtina Kapustina



Svetlana Guseva

Office

Housebook Real Estate LCC

Dubai Marina, office 2502-01, Dubai, UAE

Company license: 1128098

ae.housebook.deals

partner@housebook.ae

