

# 340 RIVERSIDE CRESCENT



SOBHA HARTLAND II





THE WORLD ISLANDS

PALM  
JUMEIRAH

BURJ AL ARAB

BURJ KHALIFA

AIN DUBAI

SOBHA  
SEAHAVEN

SOBHA  
S-TOWER

UMM SUQEIM

JUMEIRAH

BUR DUBAI

S  
SOBHA REALTY  
METRO STATION

SHEIKH ZAYED ROAD

JEBEL ALI

SOBHA  
VERDE

AL QUOZ INDUSTRIAL AREA

THE DUBAI MALL

AL BARSHA

AL KHAIL ROAD

SOBHA  
HARTLAND

DUBAI  
INTERNATIONAL  
AIRPORT

DEUBAI INVESTMENTS  
PARK

EXPO  
2020  
DUBAI  
UAE

MOTOR CITY

NAD AL SHEBA

DUBAI CREEK HARBOUR

RASHIDIYA

SOBHA  
HARTLAND II

SOBHA ONE

AL MAKTOUM  
INTERNATIONAL  
AIRPORT

SHEIKH MOHAMMED BIN ZAYED ROAD

SOBHA  
RESERVE

DUBAI SILICON  
OASIS

INTERNATIONAL  
CITY



# A depiction of true vibrancy

Close to the pulsating heart of Dubai.

  
RAS AL KHOR  
WILDLIFE SANCTUARY  
05 MINUTES

  
MEYDAN  
RACE COURSE  
10 MINUTES

  
SOBHA HARTLAND &  
2 INTERNATIONAL SCHOOLS  
10 MINUTES

  
DUBAI INTERNATIONAL  
AIRPORT  
12 MINUTES

  
BUSINESS BAY  
12 MINUTES

  
THE DUBAI MALL  
15 MINUTES

  
BURJ KHALIFA &  
DOWNTOWN DUBAI  
15 MINUTES

  
DUBAI FRAME  
15 MINUTES

  
DUBAI OPERA  
15 MINUTES

  
PALM JUMEIRAH  
25 MINUTES







This is  
340 RIVERSIDE CRESCENT



340 reasons to elevate your quality of life. Here are a mere few. A spectacular tower nestled within Sobha Hartland II 340 Riverside Crescent encompasses a rich sense of community and superlative waterfront living in one of the city's most sought-after locations.





The epitome of a  
vibrant community ambience

Discover a sense of belonging among likeminded residence, where the bonds of genuine community living are fostered through high-quality amenities, creating a truly enriching experience.





Exceptional as expected

Elegant-styled abodes expertly crafted to create a sense of relaxed wellbeing amid lavish surrounds for everlasting luxury.



Serene waterfront setting,  
world-class amenities,  
excellent locality

340 Riverside Crescent is the ultimate lifestyle venue. Start your day with a casual stroll through inspiring surrounds. Discover pristine beaches. Savour views of the vibrant Dubai and sprawling greenery from your exclusive Sky Gardens haven. End your day as the golden setting sun soothes your senses.







## An exertion excursion

Reward mind and body, elevate your physical wellbeing while savouring all the thoughtfully conceived facilities that complement your discerning quality of life. Elevate your endurance and stamina with our cutting edge fitness trails.





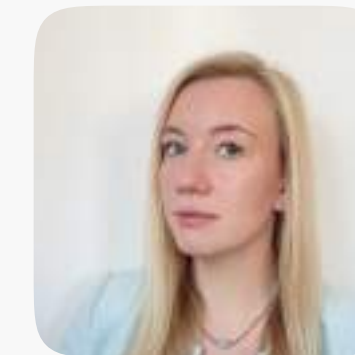


**+971 (4) 412-5000**

Affiliate  
managers



**Alevtina  
Kapustina**



**Svetlana  
Guseva**

## Office

Housebook Real Estate LCC,  
**Dubai Marina, office 2502-01, Dubai, UAE**  
Company license: 1128098

[ae.housebook.deals](https://ae.housebook.deals)

[partner@housebook.ae](mailto:partner@housebook.ae)

