

TOWN SQUARE



ODESSA

NSHAMANA[®]

FLOOR PLANS





*Balcony sizes vary

1 Bedroom - Unit Type A

Area	Min	Max
Suite	54.87 Sq.m / 590.62 Sq.ft	56.81 Sq.m / 611.50 Sq.ft
Balcony	3.81 Sq.m / 41.01 Sq.ft	3.31 Sq.m / 35.63 Sq.ft
Total built-up	58.68 Sq.m / 631.63 Sq.ft	60.12 Sq.m / 647.13 Sq.ft

Disclaimer

1. All room dimensions are in metric and measured to structural elements and exclude wall finishes and construction tolerances.
 2. All dimensions have been provided by our consultant architects. 3. All materials, dimensions, drawings features and amenities are approximate at the time of printing. 4. Actual area may vary from stated area. Drawings not to scale E&OE. The developer reserves the right to make revisions to the floor plans and any features, materials, dimensions, drawings and amenities mentioned in this brochure without notice.



*Balcony sizes vary

2Bedroom - Unit Type A

Area	Min	Max
Suite	82.88 Sq.m / 892.11 Sq.ft	85.56 Sq.m / 920.96 Sq.ft
Balcony	3.81 Sq.m / 41.01 Sq.ft	3.31 Sq.m / 35.63 Sq.ft
Total built-up	86.69 Sq.m / 933.12 Sq.ft	88.87 Sq.m / 956.59 Sq.ft

Disclaimer

1. All room dimensions are in metric and measured to structural elements and exclude wall finishes and construction tolerances.
 2. All dimensions have been provided by our consultant architects. 3. All materials, dimensions, drawings features and amenities are approximate at the time of printing. 4. Actual area may vary from stated area. Drawings not to scale E&OE. The developer reserves the right to make revisions to the floor plans and any features, materials, dimensions, drawings and amenities mentioned in this brochure without notice.



*Balcony sizes vary

2Bedroom - Unit Type B

Area	
Suite	94.17 Sq.m / 1013.64 Sq.ft
Balcony	4.78 Sq.m / 51.45 Sq.ft
Total built-up	98.95 Sq.m / 1065.09 Sq.ft

Disclaimer

1. All room dimensions are in metric and measured to structural elements and exclude wall finishes and construction tolerances.
 2. All dimensions have been provided by our consultant architects. 3. All materials, dimensions, drawings features and amenities are approximate at the time of printing. 4. Actual area may vary from stated area. Drawings not to scale E&OE. The developer reserves the right to make revisions to the floor plans and any features, materials, dimensions, drawings and amenities mentioned in this brochure without notice.



*Balcony sizes vary

2Bedroom - Unit Type C

Area	Min	Max
Suite	86.39 Sq.m / 929.89 Sq.ft	89.33 Sq.m / 961.54 Sq.ft
Balcony	6.48 Sq.m / 69.75 Sq.ft	5.73 Sq.m / 61.68 Sq.ft
Total built-up	92.87 Sq.m / 999.64 Sq.ft	95.06 Sq.m / 1023.22 Sq.ft

Disclaimer

1. All room dimensions are in metric and measured to structural elements and exclude wall finishes and construction tolerances.
 2. All dimensions have been provided by our consultant architects. 3. All materials, dimensions, drawings features and amenities are approximate at the time of printing. 4. Actual area may vary from stated area. Drawings not to scale E&OE. The developer reserves the right to make revisions to the floor plans and any features, materials, dimensions, drawings and amenities mentioned in this brochure without notice.



*Balcony sizes vary

2Bedroom - Unit Type D

Area	Min	Max
Suite	80.39 Sq.m / 865.31 Sq.ft	83.18 Sq.m / 895.34 Sq.ft
Balcony	6.48 Sq.m / 69.75 Sq.ft	5.73 Sq.m / 61.68 Sq.ft
Total built-up	86.87 Sq.m / 935.06 Sq.ft	88.91 Sq.m / 957.02 Sq.ft

Disclaimer

1. All room dimensions are in metric and measured to structural elements and exclude wall finishes and construction tolerances.
 2. All dimensions have been provided by our consultant architects. 3. All materials, dimensions, drawings features and amenities are approximate at the time of printing. 4. Actual area may vary from stated area. Drawings not to scale E&OE. The developer reserves the right to make revisions to the floor plans and any features, materials, dimensions, drawings and amenities mentioned in this brochure without notice.



*Balcony sizes vary

2Bedroom - Unit Type E

Area	Min	Max
Suite	88.90 Sq.m / 956.91 Sq.ft	91.83 Sq.m / 988.45 Sq.ft
Balcony	9.11 Sq.m / 98.06 Sq.ft	8.09 Sq.m / 87.08 Sq.ft
Total built-up	98.01 Sq.m / 1054.97 Sq.ft	99.92 Sq.m / 1075.53 Sq.ft

Disclaimer

1. All room dimensions are in metric and measured to structural elements and exclude wall finishes and construction tolerances.
 2. All dimensions have been provided by our consultant architects. 3. All materials, dimensions, drawings features and amenities are approximate at the time of printing. 4. Actual area may vary from stated area. Drawings not to scale E&OE. The developer reserves the right to make revisions to the floor plans and any features, materials, dimensions, drawings and amenities mentioned in this brochure without notice.



*Balcony sizes vary

3Bedroom - Unit Type A

Area	Min	Max
Suite	133.00 Sq.m / 1431.60 Sq.ft	137.47 Sq.m / 1479.71 Sq.ft
Balcony	10.59 Sq.m / 113.99 Sq.ft	9.56 Sq.m / 102.90 Sq.ft
Total built-up	143.59 Sq.m / 1545.59 Sq.ft	147.03 Sq.m / 1582.62 Sq.ft

Disclaimer

1. All room dimensions are in metric and measured to structural elements and exclude wall finishes and construction tolerances.
 2. All dimensions have been provided by our consultant architects. 3. All materials, dimensions, drawings features and amenities are approximate at the time of printing. 4. Actual area may vary from stated area. Drawings not to scale E&OE. The developer reserves the right to make revisions to the floor plans and any features, materials, dimensions, drawings and amenities mentioned in this brochure without notice.



3Bedroom - Unit Type B

Area	
Suite	122.32 Sq.m / 1316.64 Sq.ft
Balcony	64.44 Sq.m / 693.63 Sq.ft
Total built-up	186.76 Sq.m / 2010.27 Sq.ft

Disclaimer

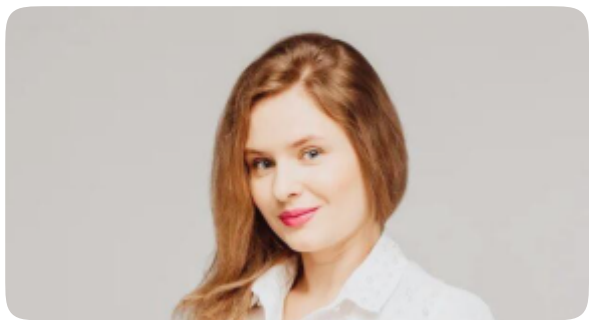
1. All room dimensions are in metric and measured to structural elements and exclude wall finishes and construction tolerances.
 2. All dimensions have been provided by our consultant architects. 3. All materials, dimensions, drawings features and amenities are approximate at the time of printing. 4. Actual area may vary from stated area. Drawings not to scale E&OE. The developer reserves the right to make revisions to the floor plans and any features, materials, dimensions, drawings and amenities mentioned in this brochure without notice.



housebook Real Estate Company
since 2012 in the UAE

+971 (4) 412-5007

Affiliate managers



Alevtina Kapustina



Svetlana Guseva

Office

Housebook Real Estate LCC

Dubai Marina, office 2502-01, Dubai, UAE

Company license: 1128098

ae.housebook.deals

partner@housebook.ae

