

essenlfe
RESIDENCE

Object 1

JVT: Serene Community

Jumeirah Village Triangle (JVT) is a sustainable green freehold development offering a serene atmosphere. This peaceful suburban community is considered as one of the top family-friendly neighbourhoods in Dubai is situated on the northern side of Dubai. It is a city on its own, offering its residents a thriving community filled with parks, schools and mosques.

The neighborhood is an ideal choice for property investors eyeing lucrative returns as well as residents seeking a tranquil living experience. This community is preferred mostly by families and individuals who are seeking a premium and exceptional lifestyle.



Connected To The City

Jumeirah Village Triangle (JVT) located at the junction of Sheikh Mohammed Bin Zayed Road (E311) and Al Khail Road (E44), conveniently located near the coastal areas to Jumeirah Island, Palm Jumeirah, and Palm Jebel Ali. It Offers easy access to central locations within the emirate.

 Attractions	 Golf clubs	 Kids	 Malls	 Hotels
9 MINUTES - Dubai Miracle Garden	15 MINUTES - Jumeirah Golf Estates Golf Course	2 MINUTES - Sunmarke School	11 MINUTES - City Centre Meaisem	2 MINUTES - Novotel JVT
20 MINUTES - The Walk JBR	17 MINUTES - Montgomerie Golf Course	5 MINUTES - Arcadia School	15 MINUTES - Circle Mall	2 MINUTES - Mövenpick Hotel JVT
22 MINUTES - Palm Jumeirah		12 MINUTES - JSS International School	15 MINUTES - Mall of the Emirates	15 MINUTES - Aloft Me'aisam
25 MINUTES - Motiongate Theme Park		18 MINUTES - GEMS Founders School	17 MINUTES - Dubai Hills Mall	15 MINUTES - FIVE Jumeirah Village Hotel
27 MINUTES - Legoland Dubai				



essenl1fe

RESIDENCE

District 3, Jumeirah Village Triangle

Welcome to **ESSENL1FE**, a new paradigm of living that draws inspiration from the “**essence of life**” itself. **ESSENL1FE** offers a lifestyle rooted in purpose, harmony, and fulfillment. This unique residence embodies the core of what truly matters—peace, growth, love, and well-being—creating a sanctuary where every resident can connect with the fundamental elements of a balanced and meaningful life.

Building Description B+G+5P+23F+R
RETAIL 1-4
OFFICE 1-10

Anticipated Handover Q4 2027

Anticipated Service Charge AED 15/Sq.Ft

STUDIO	1 BEDROOM	1,5 BEDROOM	2 BEDROOM	2,5 BEDROOM	3 BEDROOM	TOTAL
169	106	43	21	1	3	343





Floor 17-23

Residential

Floor 15-16

Sky Infinity Pool + Residential

Floor 2-14

Residential

Floor 1

Health Club & Amenities

P3-P5

Parking

P1-P2

Offices

Ground

Residential & Commercial Lobby

Basement

Retail & Commercial Parking

A woman with her hair in a bun, wearing a white textured robe, sits on a wooden deck. She is holding a glass of orange juice and looking out over a large swimming pool. In the background, another person is swimming in the pool.

essenl1fe

R E S I D E N C E

Designed with a philosophy that
celebrates life's essential qualities

At **ESSEN1FE**, every moment feels like a resort getaway, providing an experience of **tranquility**. Whether relaxing by the infinity pool, enjoying the sauna, or finding peace in the yoga area, residents are immersed in a resort lifestyle. The meticulously designed spaces create an atmosphere of resort-like relaxation, perfect for unwinding after a long day or enjoying time with loved ones.

Upscale Amenities

essenlfe
RESIDENCE

 RESIDENTIAL LOBBY	 COMMERCIAL LOBBY	 LAGOON-STYLE POOL	 POOL DECK WITH SAND
 POOLSIDE SUNKEN LOUNGE	 KIDS POOL	 KIDS PLAY ROOM	 OUTDOOR KIDS PLAY AREA
 GYM	 OUTDOOR CROSSFIT	 YOGA/MEDITATION AREA	 PADEL COURT
 SAUNA	 STEAM	 PARTY HALL	 CINEMA
 TABLE TENNIS	 CLUBHOUSE	 BBQ AREA & LOUNGE	 OUTDOOR LOUNGE



Sky Deck Amenities



SKY INFINITY POOL



POOL DECK WITH
SUN LOUNGERS



SKY LEISURE DECK

essenlfe
RESIDENCE

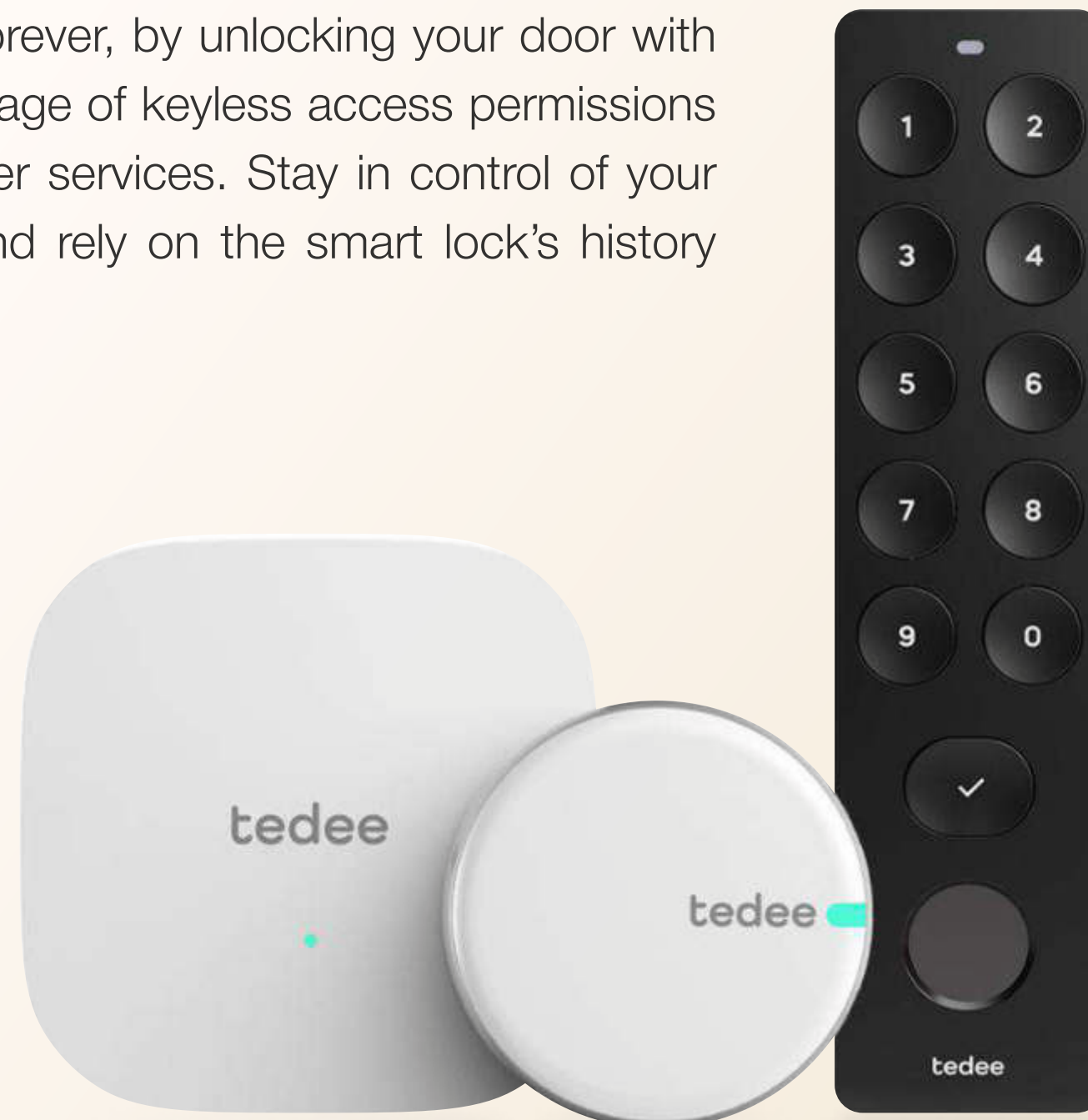


Smart Home System

With the growth of digital technology, our daily lives and constantly evolving, just like our relationship to our habitat. Proliferation of connected devices, ageing population, energy savings or new ways of working from home: all of these factors are gradually being incorporated into our interiors.

SMART LOCK

Change the way you access your home forever, by unlocking your door with a smartphone or smartwatch. Take advantage of keyless access permissions for your family members, friends, and other services. Stay in control of your property with three tiers of virtual keys and rely on the smart lock's history feature to monitor who enters and leaves.



HOME AUTOMATION CONTROLS

Control light levels, play music, set the temperature or control your home security with radiant Home automation solutions.



MyHOME+
becomes even smarter

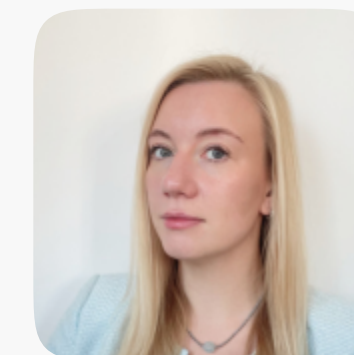


+971 (4) 412-5000

Affiliate
managers



**Alevtina
Kapustina**



**Svetlana
Guseva**

Office

Housebook Real Estate LCC

Dubai Marina, office 2502-01, Dubai, UAE

Company license: 1128098

ae.housebook.deals

partner@housebook.ae

