

Parkwood

DUBAI HILLS ESTATE

— INTERIORS BY VIDA —

FLOOR PLANS

EMAAR

Parkwood

DUBAI HILLS ESTATE

— INTERIORS BY VIDA —

1 BEDROOM TYPE A TOWER A

UNIT 102, 202, 302, 402, 502, 602, 702, 802, 902, 1002, 1102,
1202, 1302, 1402, 1502, 1602, 1702, 1802, 1902, 2002

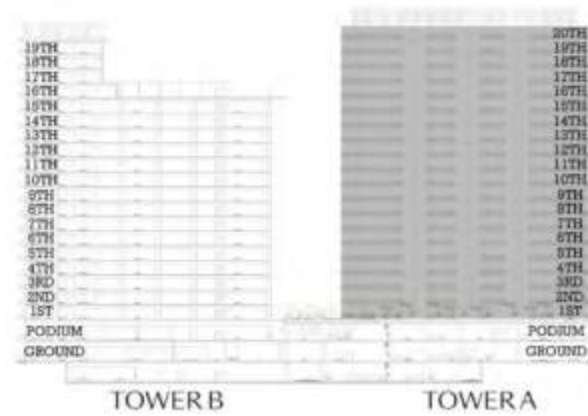
SUITE AREA	694.19 SQ.FT.	64.49 SQ.M.
BALCONY AREA	130.03 SQ.FT.	12.08 SQ.M.
TOTAL AREA	824.22 SQ.FT.	76.57 SQ.M.

UNIT 103, 203, 303, 403, 503, 603, 703, 803, 903, 1003, 1103,
1203, 1303, 1403, 1503, 1603, 1703, 1803, 1903, 2003

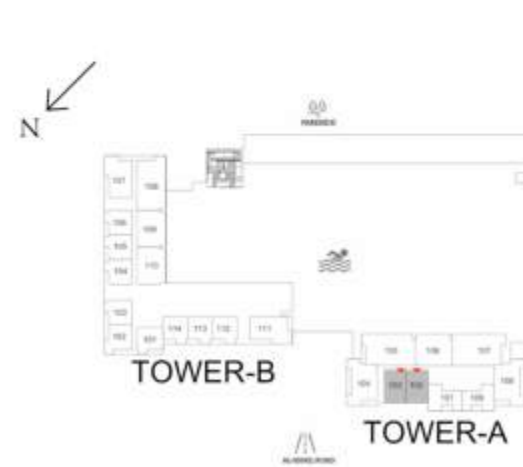
SUITE AREA	703.10 SQ.FT.	65.32 SQ.M.
BALCONY AREA	126.91 SQ.FT.	11.79 SQ.M.
TOTAL AREA	830.01 SQ.FT.	77.11 SQ.M.



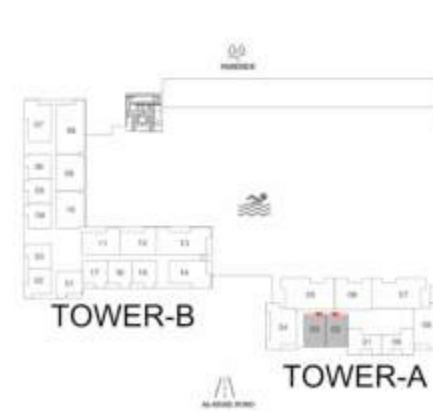
KEY SECTION



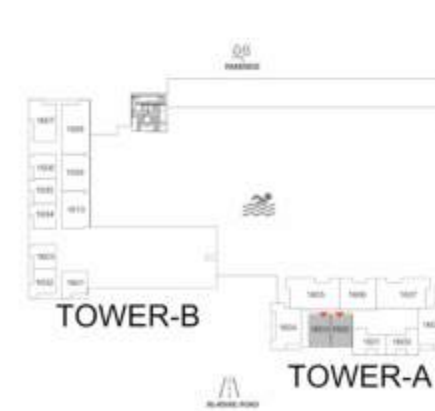
KEYPLAN



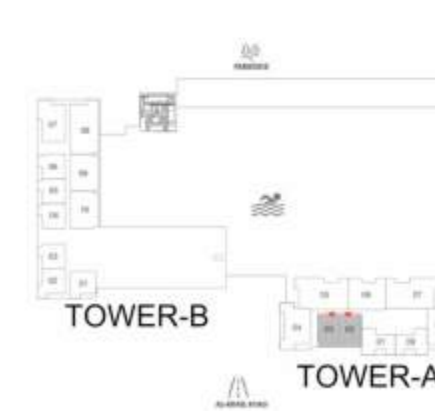
LEVEL 1



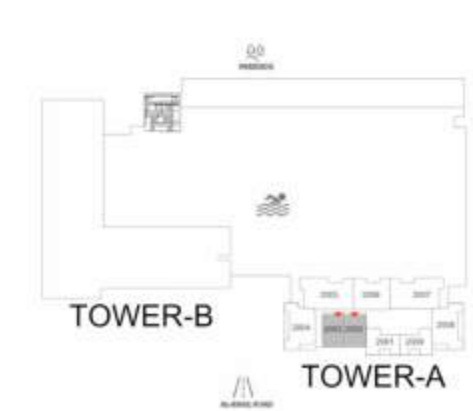
LEVELS 2-15



LEVEL 16



LEVELS 17-19



LEVEL 20

Parkwood

DUBAI HILLS ESTATE

— INTERIORS BY VIDA —

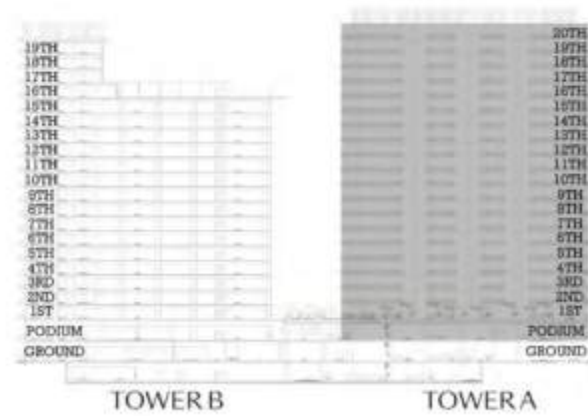
1 BEDROOM TYPE B TOWER A

UNIT P01, 101, 201, 301, 401, 501, 601, 701, 801, 901, 1001,
1101, 1201, 1301, 1401, 1501, 1601, 1701, 1801, 1901, 2001

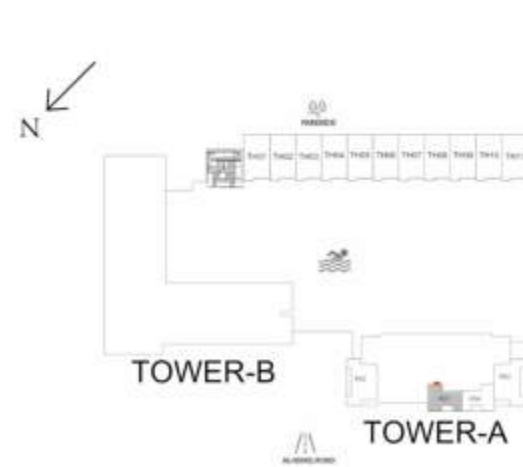
SUITE AREA	637.18 SQ.FT.	59.20 SQ.M.
BALCONY AREA	125.25 SQ.FT.	11.63 SQ.M.
TOTAL AREA	762.43 SQ.FT.	70.83 SQ.M.



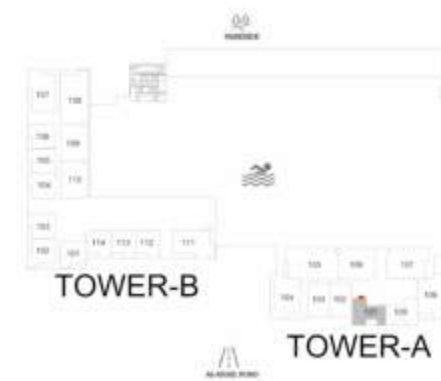
KEY SECTION



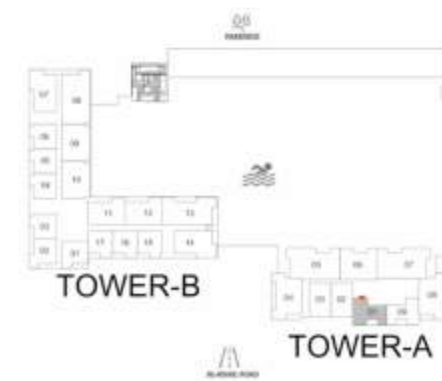
KEYPLAN



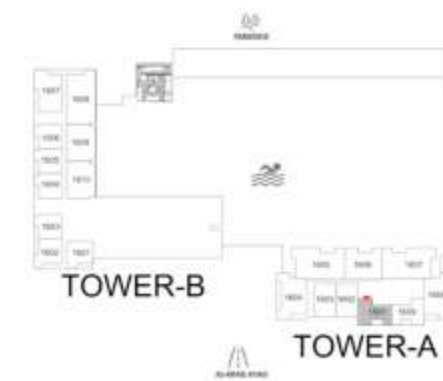
PODIUM LEVEL



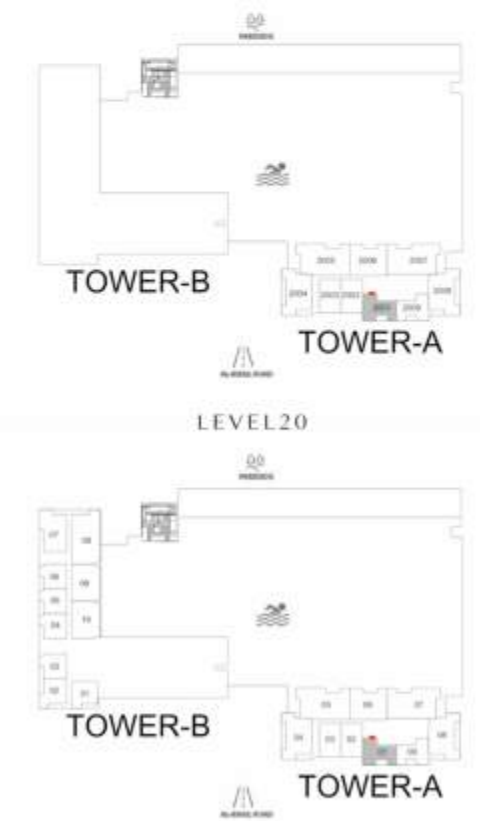
LEVEL 1



LEVELS 2-15



LEVEL 16



LEVELS 17-19

FLOOR PLAN 1. All dimensions are in imperial and metric, and measured from finish to finish excluding construction tolerances. 2. All materials, dimensions, and drawings are approximate only. 3. Information is subject to change without notice, at developer's absolute discretion. 4. Actual area may vary from the stated area. 5. Drawings not to scale. 6. All images used are for illustrative purposes only and do not represent the actual size, features, specifications, fittings, and furnishings. 7. The developer reserves the right to make revisions / alterations, at it's absolute discretion, without any liability whatsoever.

EMAAR

Parkwood

DUBAI HILLS ESTATE

— INTERIORS BY VIDA —

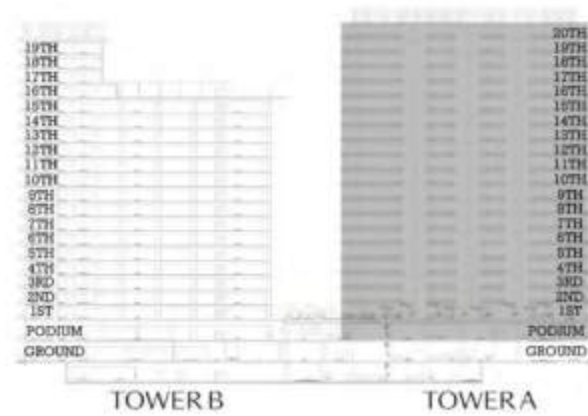
1 BEDROOM TYPE B1 TOWER A

UNIT P04, 109, 209, 309, 409, 509, 609, 709, 809, 909, 1009,
1109, 1209, 1309, 1409, 1509, 1609, 1709, 1809, 1909, 2009

SUITE AREA	638.90 SQ.FT.	59.35 SQ.M.
BALCONY AREA	125.25 SQ.FT.	11.64 SQ.M.
TOTAL AREA	764.15 SQ.FT.	70.99 SQ.M.



KEY SECTION



KEYPLAN



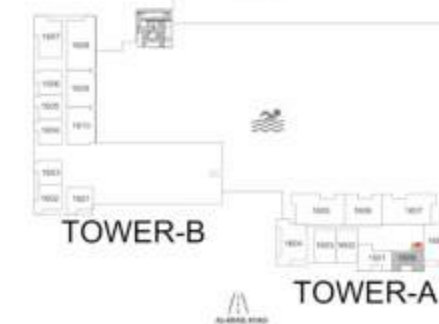
PODIUM LEVEL



LEVEL 1



LEVELS 2-15



LEVEL 16



LEVELS 17-19

FLOOR PLAN 1. All dimensions are in imperial and metric, and measured from finish to finish excluding construction tolerances. 2. All materials, dimensions, and drawings are approximate only. 3. Information is subject to change without notice, at developer's absolute discretion. 4. Actual area may vary from the stated area. 5. Drawings not to scale. 6. All images used are for illustrative purposes only and do not represent the actual size, features, specifications, fittings, and furnishings. 7. The developer reserves the right to make revisions / alterations, at it's absolute discretion, without any liability whatsoever.

EMAAR

Parkwood

DUBAI HILLS ESTATE

— INTERIORS BY VIDA —

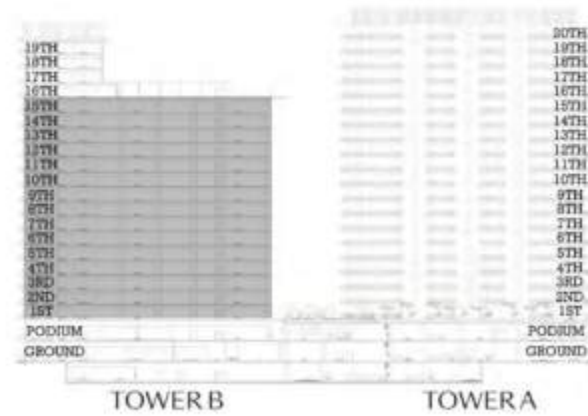
1 BEDROOM TYPE C TOWER B

UNIT 112, 113, 114, 215, 216, 217, 315, 316, 317, 415, 416, 417, 515, 516, 517, 615, 616, 617, 715, 716, 717, 815, 816, 817, 915, 916, 917, 1015, 1016, 1017, 1115, 1116, 1117, 1215, 1216, 1217, 1315, 1316, 1317, 1415, 1416, 1417, 1515, 1516, 1517

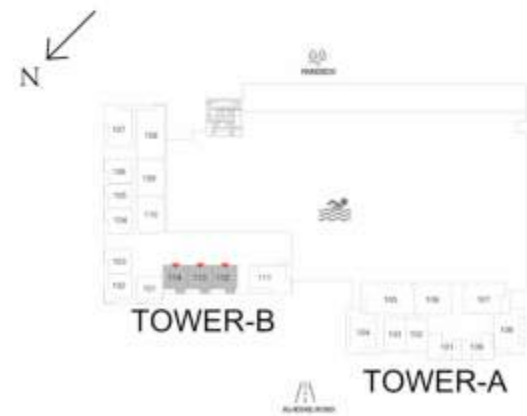
SUITE AREA	668.01 SQ.FT.	62.06 SQ.M.
BALCONY AREA	59.59 SQ.FT.	5.54 SQ.M.
TOTAL AREA	727.60 SQ.FT.	67.60 SQ.M.



KEY SECTION



KEYPLAN



LEVEL 1



LEVELS 2-15

FLOOR PLAN 1. All dimensions are in imperial and metric, and measured from finish to finish excluding construction tolerances. 2. All materials, dimensions, and drawings are approximate only. 3. Information is subject to change without notice, at developer's absolute discretion. 4. Actual area may vary from the stated area. 5. Drawings not to scale. 6. All images used are for illustrative purposes only and do not represent the actual size, features, specifications, fittings, and furnishings. 7. The developer reserves the right to make revisions / alterations, at it's absolute discretion, without any liability whatsoever.

EMAAR

Parkwood

DUBAI HILLS ESTATE

— INTERIORS BY VIDA —

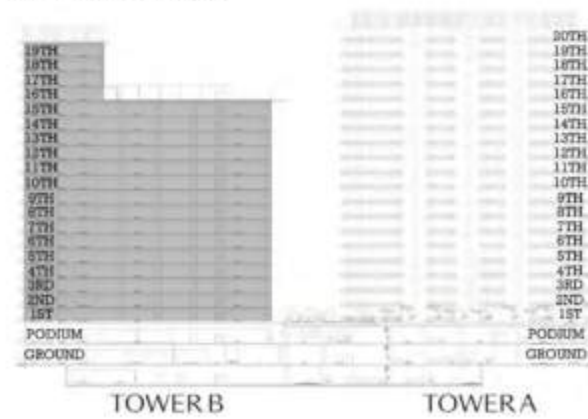
1 BEDROOM TYPE C1 TOWER B

UNIT 103, 104, 105, 106, 203, 204, 205, 206, 303, 304, 305, 306, 403, 404, 405, 406, 503, 504, 505, 506, 603, 604, 605, 606, 703, 704, 705, 706, 803, 804, 805, 806, 903, 904, 905, 906, 1003, 1004, 1005, 1006, 1103, 1104, 1105, 1106, 1203, 1204, 1205, 1206, 1303, 1304, 1305, 1306, 1403, 1404, 1405, 1406, 1503, 1504, 1505, 1506, 1603, 1604, 1605, 1606, 1703, 1704, 1705, 1706, 1803, 1804, 1805, 1806, 1903, 1904, 1905, 1906

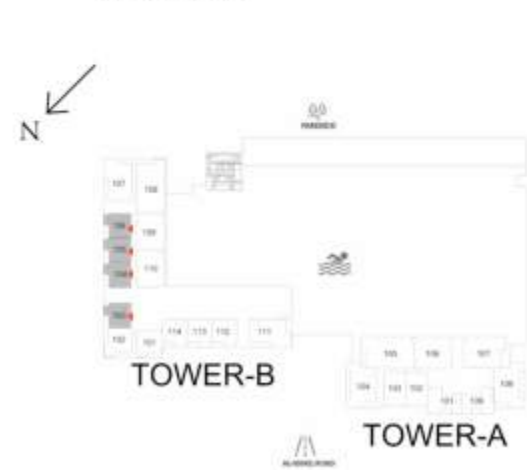
SUITE AREA	670.65 SQ.FT.	62.31 SQ.M.
BALCONY AREA	60.49 SQ.FT.	5.62 SQ.M.
TOTAL AREA	731.14 SQ.FT.	67.93 SQ.M.



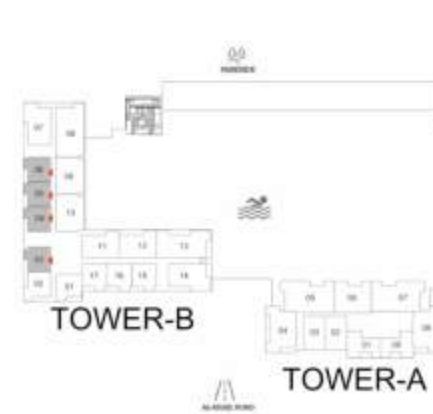
KEY SECTION



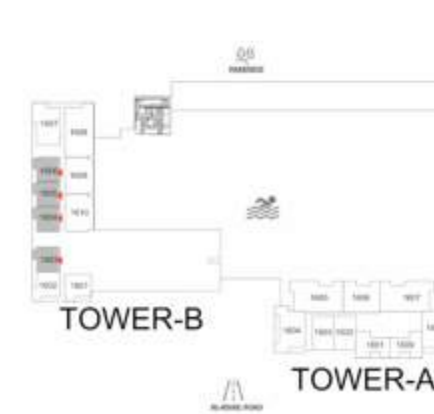
KEYPLAN



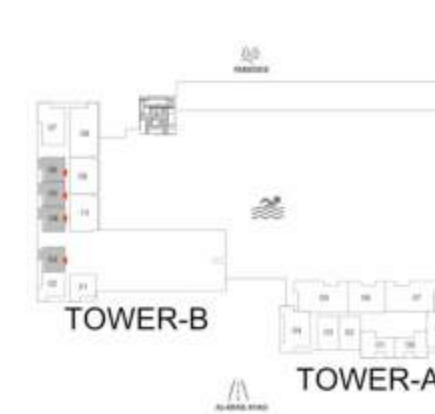
LEVEL 1



LEVELS 2-15



LEVEL 16



LEVELS 17-19

Parkwood

DUBAI HILLS ESTATE

— INTERIORS BY VIDA —

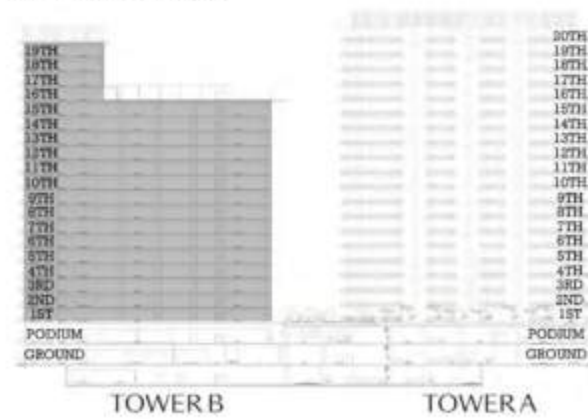
1 BEDROOM TYPE D TOWER B

UNIT 102, 202, 302, 402, 502, 602, 702, 802, 902, 1002, 1102, 1202, 1302, 1402, 1502, 1602, 1702, 1802, 1902

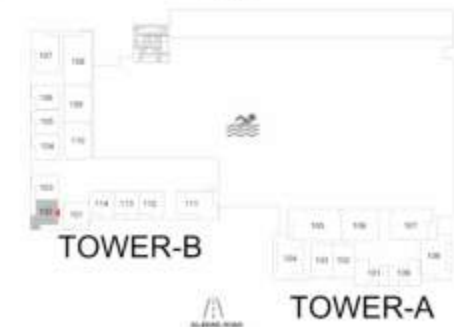
SUITE AREA	666.29 SQ.FT.	61.90 SQ.M.
BALCONY AREA	105.38 SQ.FT.	9.79 SQ.M.
TOTAL AREA	771.67 SQ.FT.	71.69 SQ.M.



KEY SECTION



KEYPLAN



LEVEL 1



LEVELS 2-15



LEVEL 16



LEVELS 17-19

FLOOR PLAN 1. All dimensions are in imperial and metric, and measured from finish to finish excluding construction tolerances. 2. All materials, dimensions, and drawings are approximate only. 3. Information is subject to change without notice, at developer's absolute discretion. 4. Actual area may vary from the stated area. 5. Drawings not to scale. 6. All images used are for illustrative purposes only and do not represent the actual size, features, specifications, fittings, and furnishings. 7. The developer reserves the right to make revisions / alterations, at it's absolute discretion, without any liability whatsoever.

EMAAR

Parkwood

DUBAI HILLS ESTATE

— INTERIORS BY VIDA —

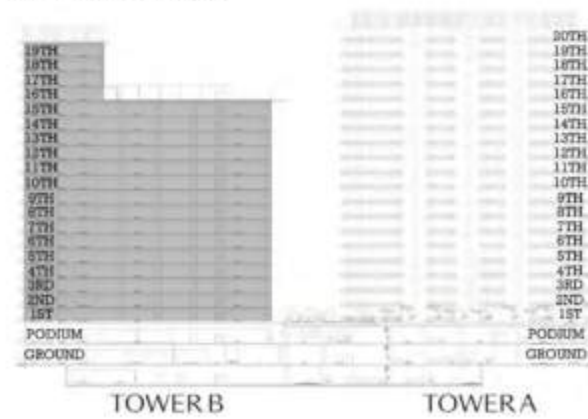
1 BEDROOM TYPE E TOWER B

UNIT 101, 201, 301, 401, 501, 601, 701, 801, 901, 1001, 1101,
1201, 1301, 1401, 1501, 1601, 1701, 1801, 1901

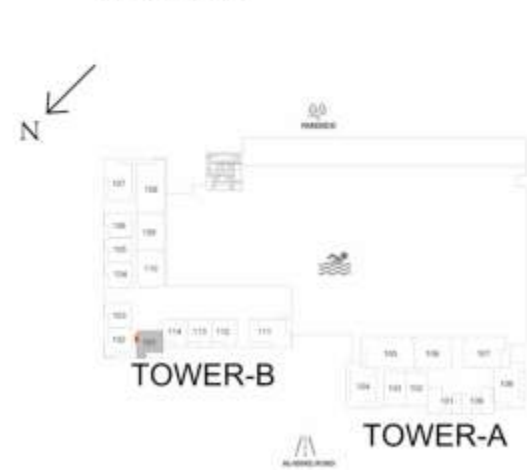
SUITE AREA	680.71 SQ.FT.	63.24 SQ.M.
BALCONY AREA	59.82 SQ.FT.	5.56 SQ.M.
TOTAL AREA	740.53 SQ.FT.	68.80 SQ.M.



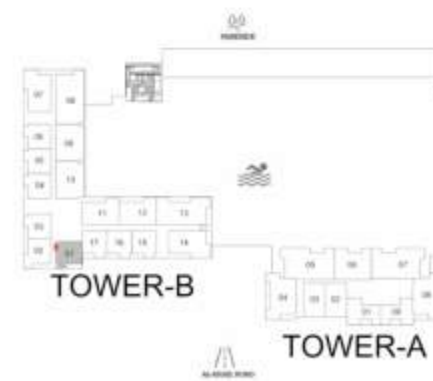
KEY SECTION



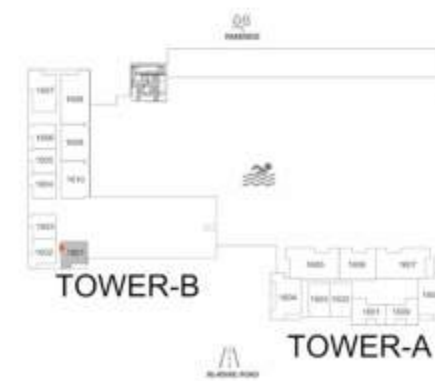
KEYPLAN



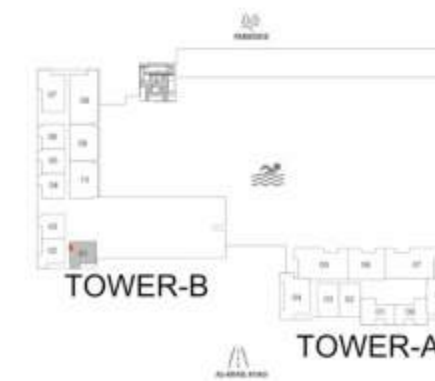
LEVEL 1



LEVELS 2-15



LEVEL 16



LEVELS 17-19

FLOOR PLAN 1. All dimensions are in imperial and metric, and measured from finish to finish excluding construction tolerances. 2. All materials, dimensions, and drawings are approximate only. 3. Information is subject to change without notice, at developer's absolute discretion. 4. Actual area may vary from the stated area. 5. Drawings not to scale. 6. All images used are for illustrative purposes only and do not represent the actual size, features, specifications, fittings, and furnishings. 7. The developer reserves the right to make revisions / alterations, at it's absolute discretion, without any liability whatsoever.

EMAAR

Parkwood

DUBAI HILLS ESTATE

— INTERIORS BY VIDA —

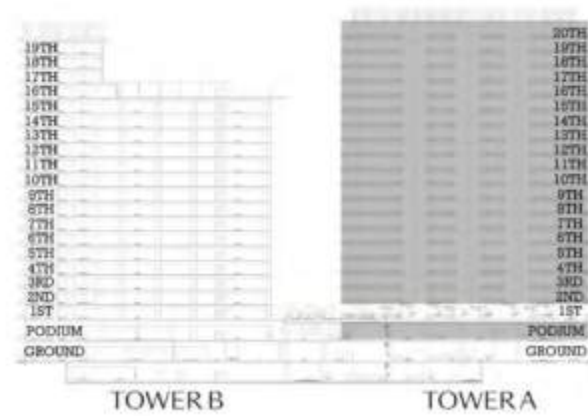
2 BEDROOM TYPE A TOWER A

UNIT P02

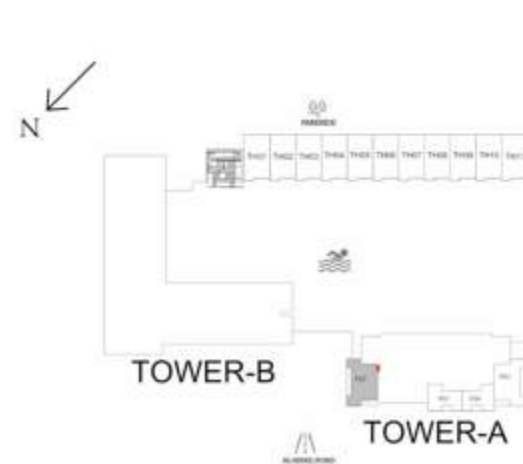
SUITE AREA	1095.87 SQ.FT.	101.81 SQ.M.
BALCONY AREA	213.01 SQ.FT.	19.79 SQ.M.
TOTAL AREA	1308.88 SQ.FT.	121.60 SQ.M.
UNIT 204, 304, 404, 504, 604, 704, 804, 904, 1004, 1104, 1204, 1304, 1404, 1504, 1604, 1704, 1804, 1904, 2004		
SUITE AREA	1095.87 SQ.FT.	101.81 SQ.M.
BALCONY AREA	213.77 SQ.FT.	19.86 SQ.M.
TOTAL AREA	1309.64 SQ.FT.	121.67 SQ.M.



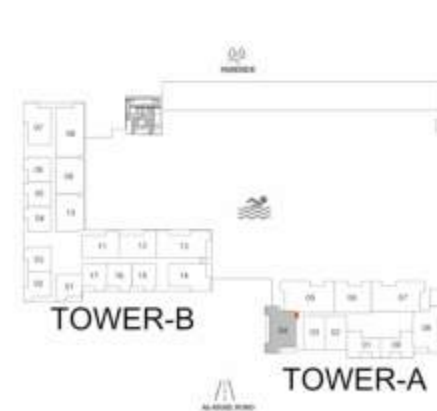
KEY SECTION



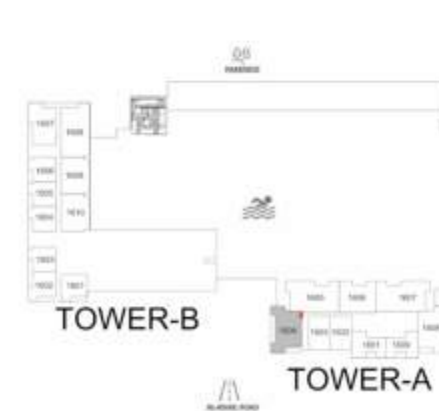
KEYPLAN



PODIUM LEVEL



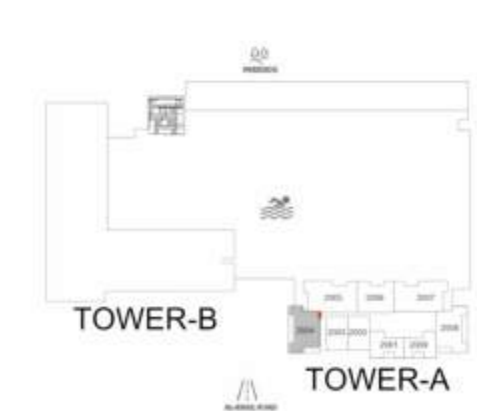
LEVELS 2-15



LEVEL 16



LEVELS 17-19



LEVEL 20

FLOOR PLAN 1. All dimensions are in imperial and metric, and measured from finish to finish excluding construction tolerances. 2. All materials, dimensions, and drawings are approximate only. 3. Information is subject to change without notice, at developer's absolute discretion. 4. Actual area may vary from the stated area. 5. Drawings not to scale. 6. All images used are for illustrative purposes only and do not represent the actual size, features, specifications, fittings, and furnishings. 7. The developer reserves the right to make revisions / alterations, at it's absolute discretion, without any liability whatsoever.

EMAAR

Parkwood

DUBAI HILLS ESTATE

— INTERIORS BY VIDA —

2 BEDROOM TYPE A1 TOWER A

UNIT P03, 108, 208, 308, 408, 508, 608, 708, 808, 908, 1008,
1108, 1208, 1308, 1408, 1508, 1608, 1708, 1808, 1908, 2008

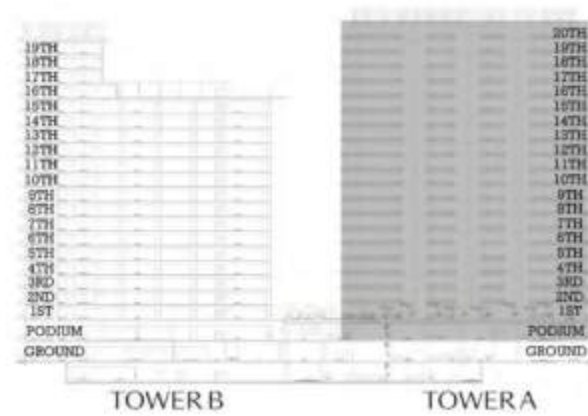
SUITE AREA 1087.95 SQ.FT. 101.07 SQ.M.

BALCONY AREA 213.43 SQ.FT. 19.83 SQ.M.

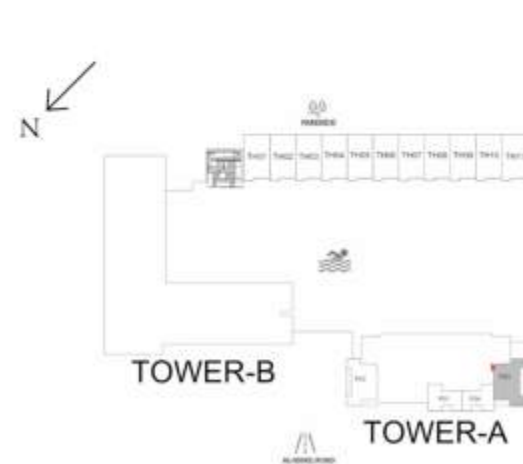
TOTAL AREA 1301.38 SQ.FT. 120.90 SQ.M.



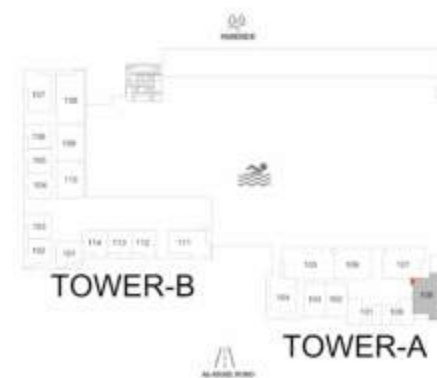
KEY SECTION



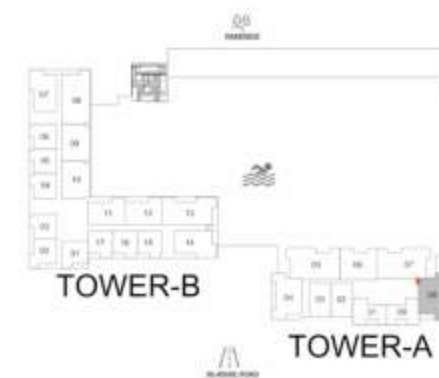
KEYPLAN



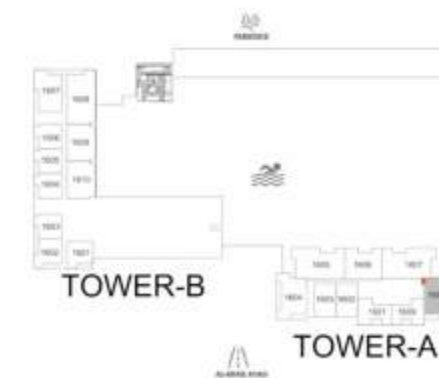
PODIUM LEVEL



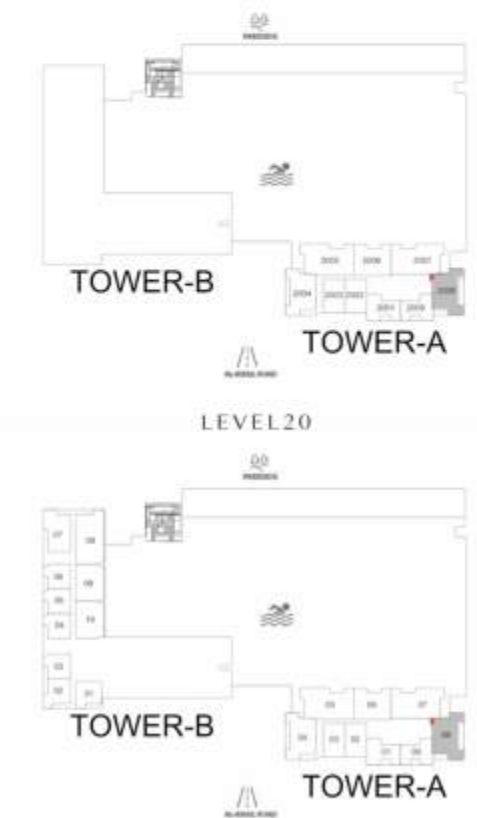
LEVEL 1



LEVELS 2-15



LEVEL 16



LEVELS 17-19

FLOOR PLAN 1. All dimensions are in imperial and metric, and measured from finish to finish excluding construction tolerances. 2. All materials, dimensions, and drawings are approximate only. 3. Information is subject to change without notice, at developer's absolute discretion. 4. Actual area may vary from the stated area. 5. Drawings not to scale. 6. All images used are for illustrative purposes only and do not represent the actual size, features, specifications, fittings, and furnishings. 7. The developer reserves the right to make revisions / alterations, at it's absolute discretion, without any liability whatsoever.

EMAAR

Parkwood

DUBAI HILLS ESTATE

— INTERIORS BY VIDA —

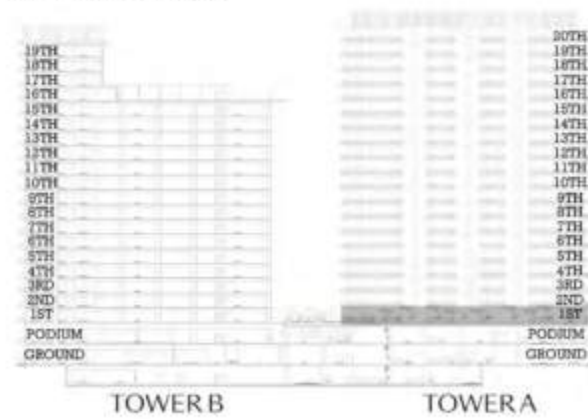
2 BEDROOM TYPE A2 TOWER A

UNIT 104

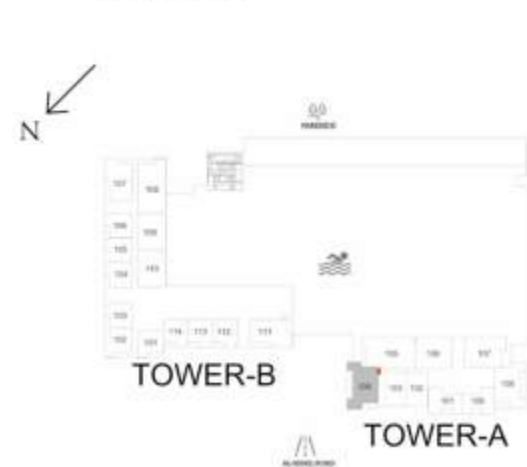
SUITE AREA	1096.52 SQ.FT.	101.87 SQ.M.
BALCONY AREA	257.90 SQ.FT.	23.96 SQ.M.
TOTAL AREA	1354.42 SQ.FT.	125.83 SQ.M.



KEY SECTION



KEYPLAN



LEVEL 1

FLOOR PLAN 1. All dimensions are in imperial and metric, and measured from finish to finish excluding construction tolerances. 2. All materials, dimensions, and drawings are approximate only. 3. Information is subject to change without notice, at developer's absolute discretion. 4. Actual area may vary from the stated area. 5. Drawings not to scale. 6. All images used are for illustrative purposes only and do not represent the actual size, features, specifications, fittings, and furnishings. 7. The developer reserves the right to make revisions / alterations, at it's absolute discretion, without any liability whatsoever.

EMAAR

Parkwood

DUBAI HILLS ESTATE

— INTERIORS BY VIDA —

2 BEDROOM TYPE B TOWER A

UNIT 206, 306, 406, 506, 606, 706, 806, 906, 1006, 1106,
1206, 1306, 1406, 1506, 1606, 1706, 1806, 1906, 2006

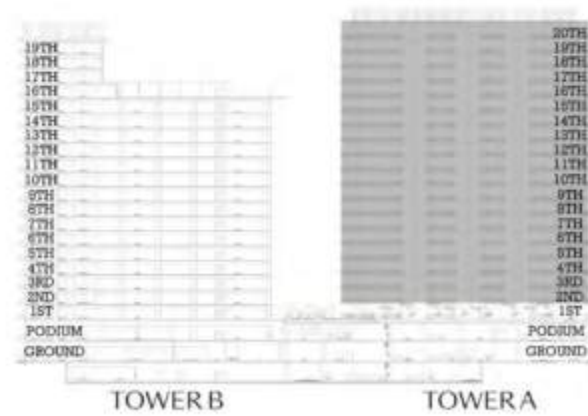
SUITE AREA 1100.18 SQ.FT. 102.21 SQ.M.

BALCONY AREA 133.04 SQ.FT. 12.36 SQ.M.

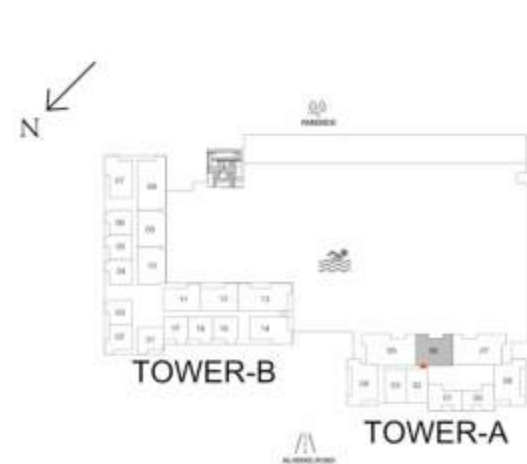
TOTAL AREA 1233.22 SQ.FT. 114.57 SQ.M.



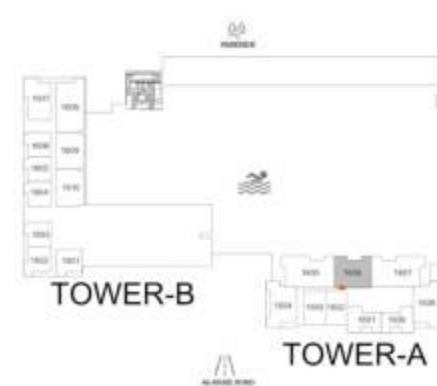
KEY SECTION



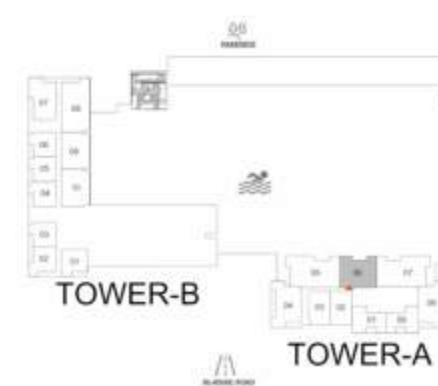
KEYPLAN



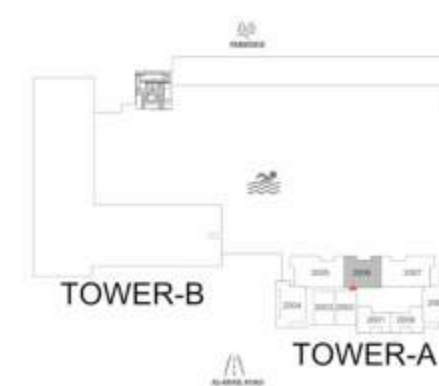
LEVELS 2-15



LEVEL 16



LEVELS 17-19



LEVEL 20

Parkwood

DUBAI HILLS ESTATE

— INTERIORS BY VIDA —

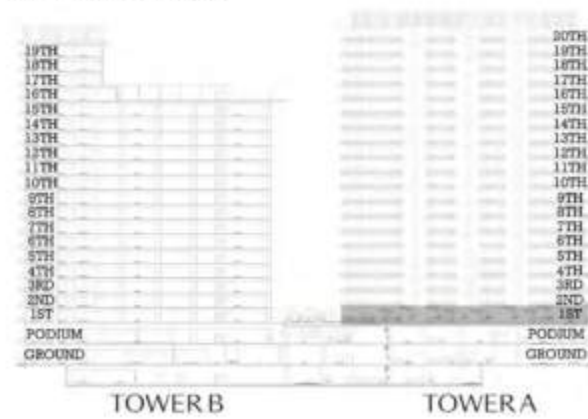
2 BEDROOM TYPE B1 TOWER A

UNIT 106

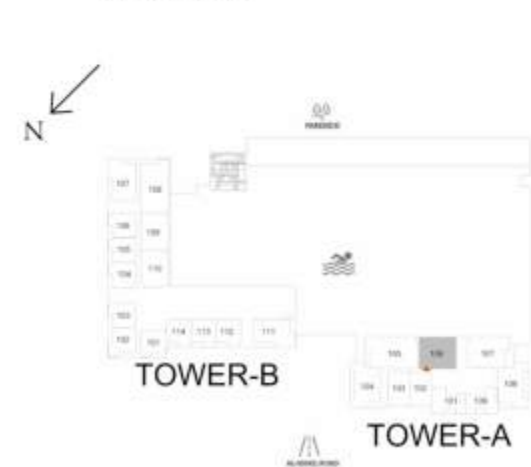
SUITE AREA	1100.29 SQ.FT.	102.22 SQ.M.
BALCONY AREA	256.72 SQ.FT.	23.85 SQ.M.
TOTAL AREA	1357.01 SQ.FT.	126.07 SQ.M.



KEY SECTION



KEYPLAN



LEVEL 1

Parkwood

DUBAI HILLS ESTATE

— INTERIORS BY VIDA —

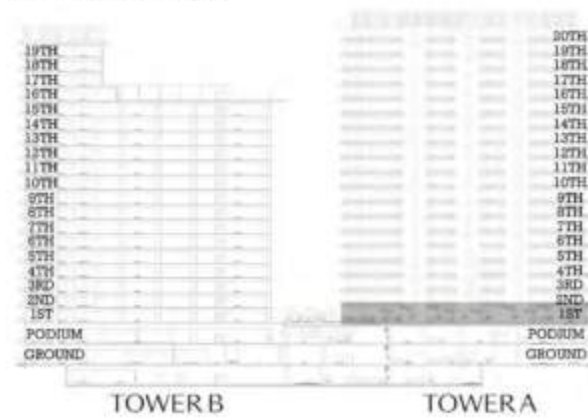
2 BEDROOM TYPE C TOWER A

UNIT 107

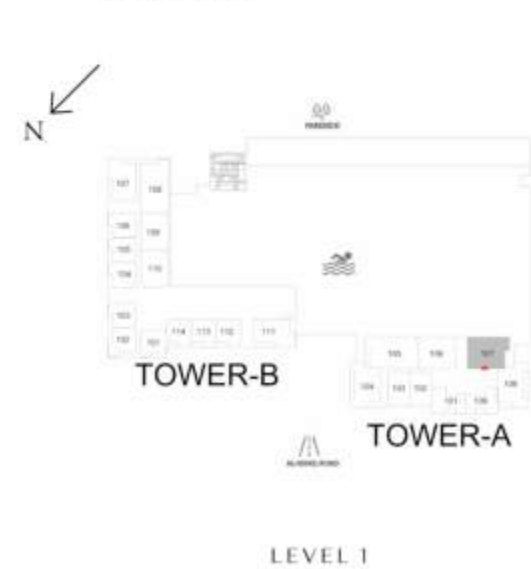
SUITE AREA	1120.31 SQ.FT.	104.08 SQ.M.
BALCONY AREA	387.50 SQ.FT.	36.00 SQ.M.
TOTAL AREA	1507.81 SQ.FT.	140.08 SQ.M.



KEY SECTION



KEYPLAN



Parkwood

DUBAI HILLS ESTATE

— INTERIORS BY VIDA —

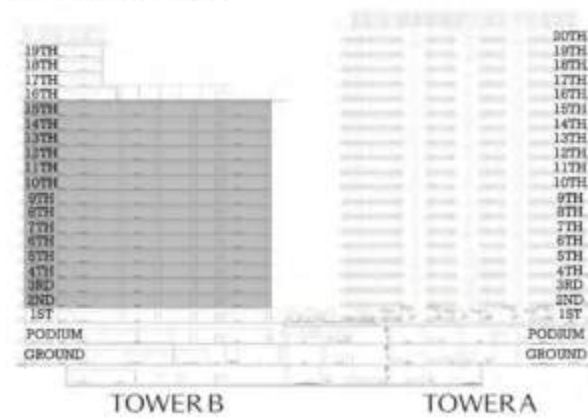
2 BEDROOM TYPE D TOWER B

UNIT 211, 212, 311, 312, 411, 412, 511, 512, 611, 612, 711, 712, 811, 812, 911, 912, 1011, 1012, 1111, 1112, 1211, 1212, 1311, 1312, 1411, 1412, 1511, 1512

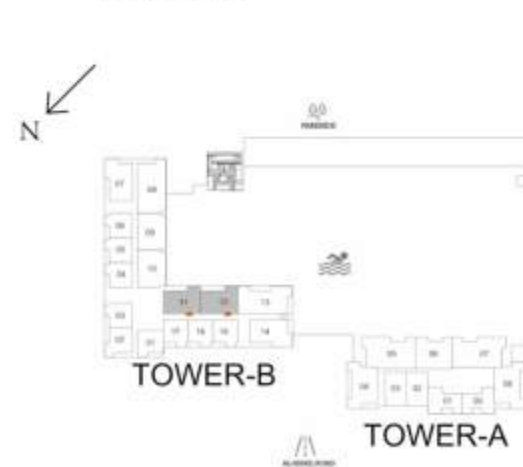
SUITE AREA	1001.21 SQ.FT.	93.02 SQ.M.
BALCONY AREA	72.87 SQ.FT.	6.77 SQ.M.
TOTAL AREA	1074.08 SQ.FT.	99.79 SQ.M.



KEY SECTION



KEYPLAN



LEVELS 2-15

Parkwood

DUBAI HILLS ESTATE

— INTERIORS BY VIDA —

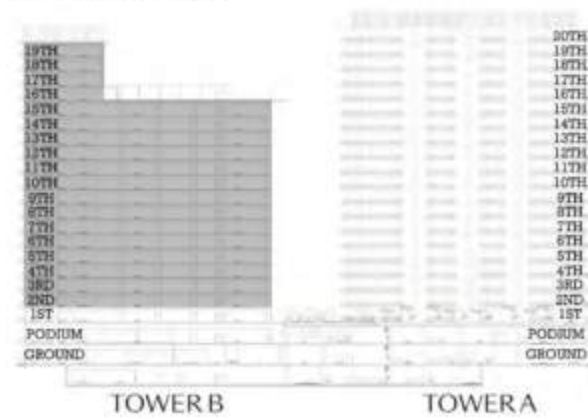
2 BEDROOM TYPE D1 TOWER B

UNIT 209, 210, 309, 310, 409, 410, 509, 510, 609, 610, 709, 710, 809, 810, 909, 910, 1009, 1010, 1109, 1110, 1209, 1210, 1309, 1310, 1409, 1410, 1509, 1510, 1609, 1610, 1709, 1710, 1809, 1810, 1909, 1910

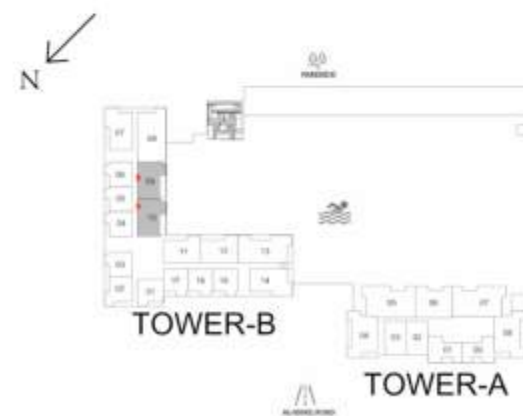
SUITE AREA	1000.51 SQ.FT.	92.95 SQ.M.
BALCONY AREA	72.53 SQ.FT.	6.74 SQ.M.
TOTAL AREA	1073.04 SQ.FT.	99.69 SQ.M.



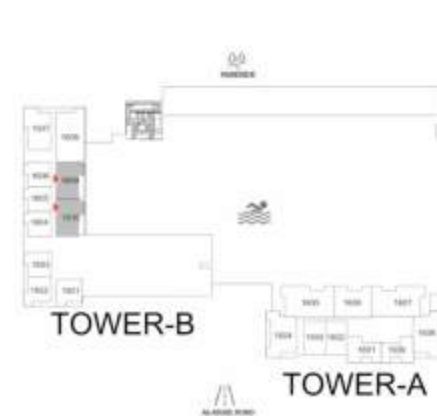
KEY SECTION



KEYPLAN



LEVELS 2-15



LEVEL 16



LEVELS 17-19

Parkwood

DUBAI HILLS ESTATE

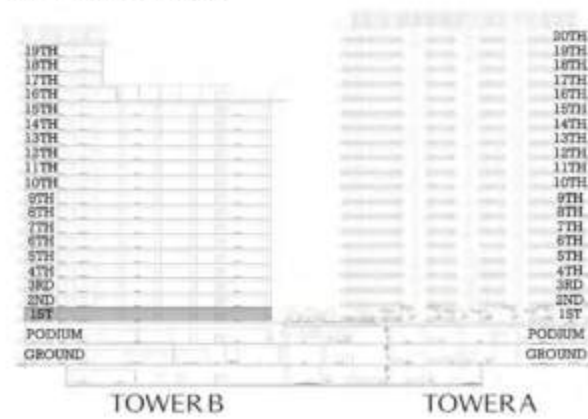
— INTERIORS BY VIDA —

2 BEDROOM TYPE D2 TOWER B

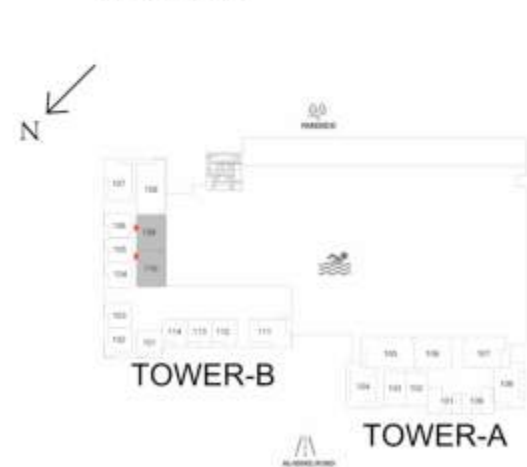
	UNIT 109	
SUITE AREA	1002.98 SQ.FT.	93.18 SQ.M.
BALCONY AREA	263.17 SQ.FT.	24.45 SQ.M.
TOTAL AREA	1266.15 SQ.FT.	117.63 SQ.M.
	UNIT 110	
SUITE AREA	998.03 SQ.FT.	92.72 SQ.M.
BALCONY AREA	256.18 SQ.FT.	23.80 SQ.M.
TOTAL AREA	1254.21 SQ.FT.	116.52 SQ.M.



KEY SECTION



KEYPLAN



LEVEL 1

Parkwood

DUBAI HILLS ESTATE

— INTERIORS BY VIDA —

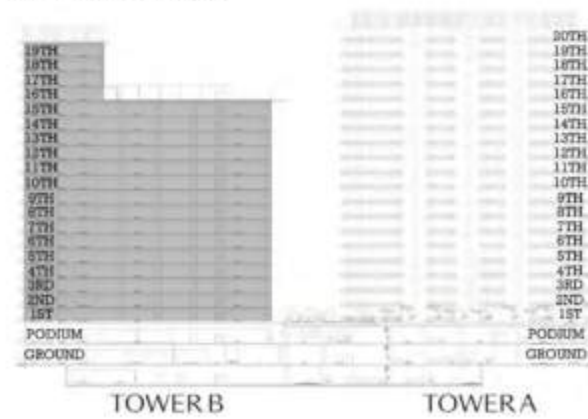
2 BEDROOM TYPE E TOWER B

UNIT 107, 207, 307, 407, 507, 607, 707, 807, 907, 1007, 1107, 1207, 1307, 1407, 1507, 1607, 1707, 1807, 1907

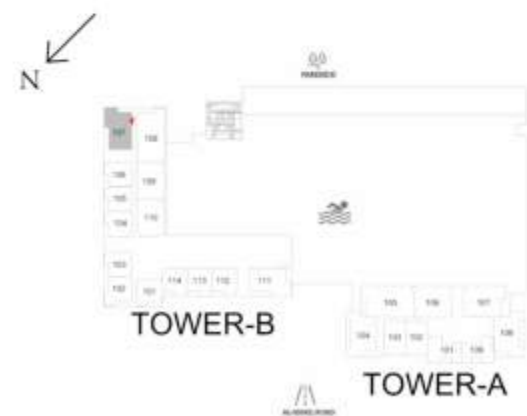
SUITE AREA	1002.74 SQ.FT.	93.16 SQ.M.
BALCONY AREA	173.08 SQ.FT.	16.08 SQ.M.
TOTAL AREA	1175.82 SQ.FT.	109.24 SQ.M.



KEY SECTION



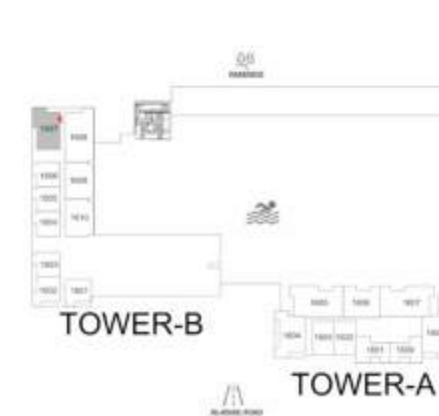
KEYPLAN



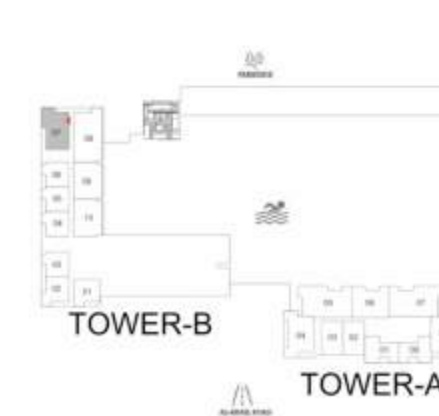
LEVEL 1



LEVELS 2-15



LEVEL 16



LEVELS 17-19

Parkwood

DUBAI HILLS ESTATE

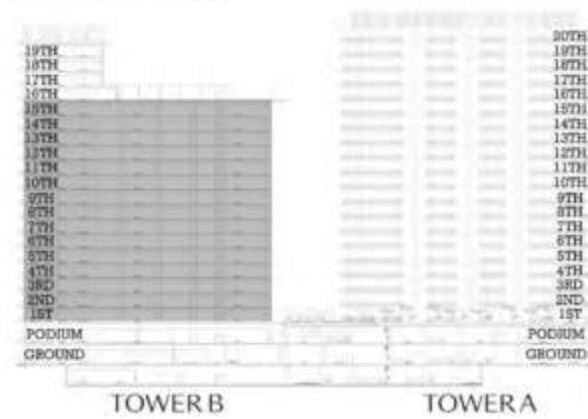
— INTERIORS BY VIDA —

2 BEDROOM TYPE E2 TOWER B

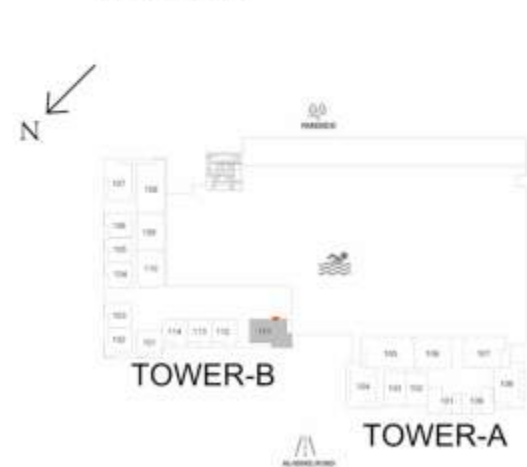
UNIT	111, 214, 314, 414, 514, 614, 714, 814, 914, 1014, 1114, 1214, 1314, 1414, 1514	
SUITE AREA	1000.29 SQ.FT.	92.93 SQ.M.
BALCONY AREA	168.46 SQ.FT.	15.65 SQ.M.
TOTAL AREA	1168.75 SQ.FT.	108.58 SQ.M.



KEY SECTION



KEYPLAN



LEVEL 1



LEVELS 2-15

FLOOR PLAN 1. All dimensions are in imperial and metric, and measured from finish to finish excluding construction tolerances. 2. All materials, dimensions, and drawings are approximate only. 3. Information is subject to change without notice, at developer's absolute discretion. 4. Actual area may vary from the stated area. 5. Drawings not to scale. 6. All images used are for illustrative purposes only and do not represent the actual size, features, specifications, fittings, and furnishings. 7. The developer reserves the right to make revisions / alterations, at it's absolute discretion, without any liability whatsoever.

EMAAR

Parkwood

DUBAI HILLS ESTATE

— INTERIORS BY VIDA —

3 BEDROOM TYPE A TOWER A

UNIT 205, 305, 405, 505, 605, 705, 805, 905, 1005, 1105,
1205, 1305, 1405, 1505, 1605, 1705, 1805, 1905, 2005

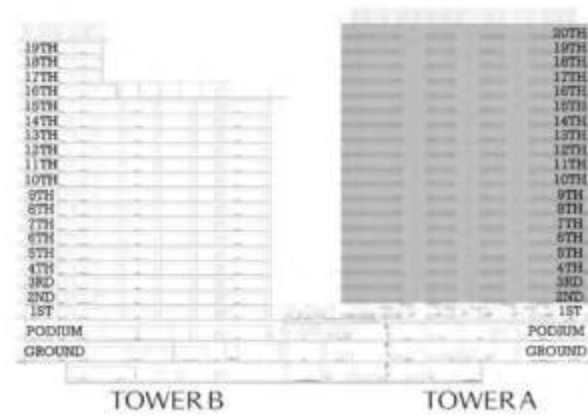
SUITE AREA 1488.33 SQ.FT. 138.27 SQ.M.

BALCONY AREA 317.75 SQ.FT. 29.52 SQ.M.

TOTAL AREA 1806.08 SQ.FT. 167.79 SQ.M.



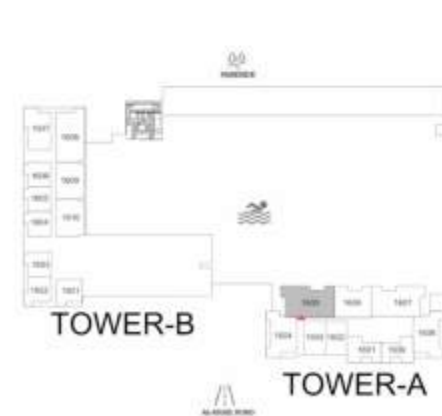
KEY SECTION



KEYPLAN



LEVELS 2-15



LEVEL 16



LEVELS 17-19



LEVEL 20

FLOOR PLAN 1. All dimensions are in imperial and metric, and measured from finish to finish excluding construction tolerances. 2. All materials, dimensions, and drawings are approximate only. 3. Information is subject to change without notice, at developer's absolute discretion. 4. Actual area may vary from the stated area. 5. Drawings not to scale. 6. All images used are for illustrative purposes only and do not represent the actual size, features, specifications, fittings, and furnishings. 7. The developer reserves the right to make revisions / alterations, at it's absolute discretion, without any liability whatsoever.

EMAAR

Parkwood

DUBAI HILLS ESTATE

— INTERIORS BY VIDA —

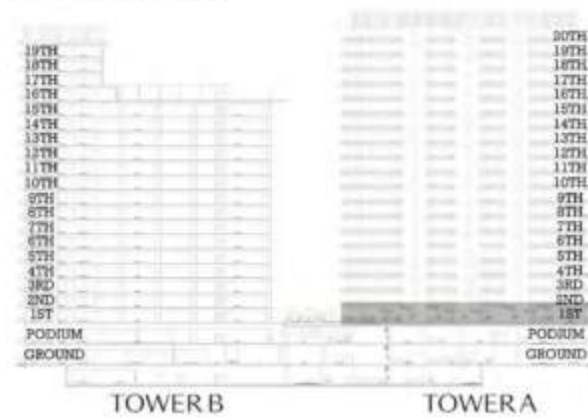
3 BEDROOM TYPE A1 TOWER A

UNIT 105

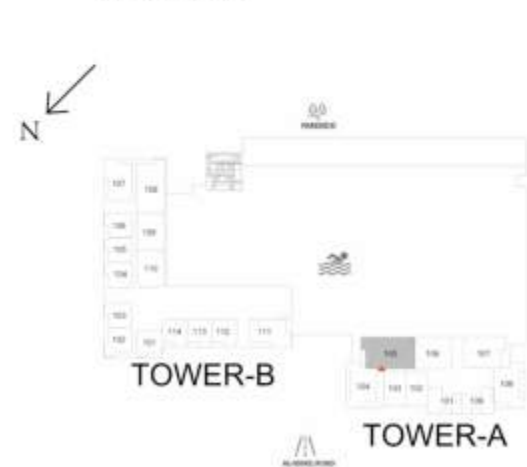
SUITE AREA	1493.92 SQ.FT.	138.79 SQ.M.
BALCONY AREA	450.15 SQ.FT.	41.82 SQ.M.
TOTAL AREA	1944.07 SQ.FT.	180.61 SQ.M.



KEY SECTION



KEYPLAN



LEVEL 1

FLOOR PLAN 1. All dimensions are in imperial and metric, and measured from finish to finish excluding construction tolerances. 2. All materials, dimensions, and drawings are approximate only. 3. Information is subject to change without notice, at developer's absolute discretion. 4. Actual area may vary from the stated area. 5. Drawings not to scale. 6. All images used are for illustrative purposes only and do not represent the actual size, features, specifications, fittings, and furnishings. 7. The developer reserves the right to make revisions / alterations, at it's absolute discretion, without any liability whatsoever.

EMAAR

Parkwood

DUBAI HILLS ESTATE

— INTERIORS BY VIDA —

3 BEDROOM TYPE A2 TOWER A

UNIT 207, 307, 407, 507, 607, 707, 807, 907, 1007, 1107,
1207, 1307, 1407, 1507, 1607, 1707, 1807, 1907, 2007

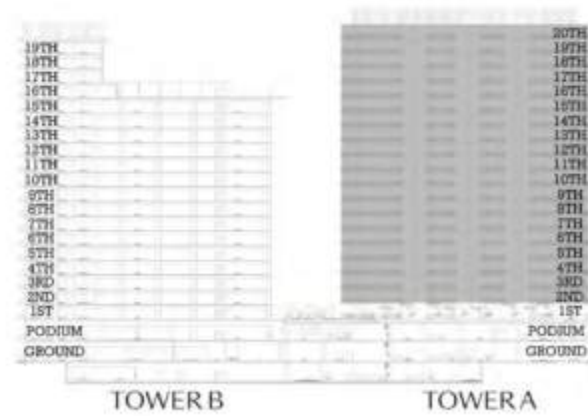
SUITE AREA 1493.38 SQ.FT. 138.74 SQ.M.

BALCONY AREA 314.20 SQ.FT. 29.19 SQ.M.

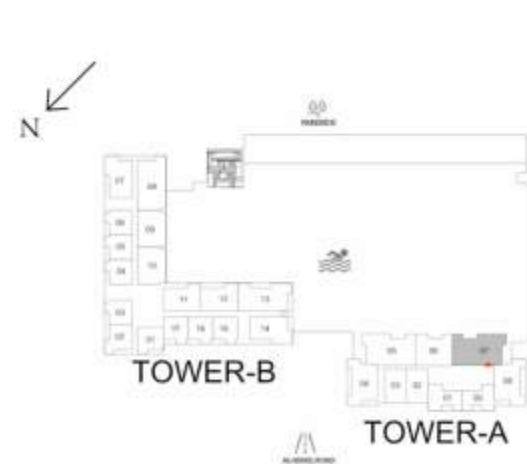
TOTAL AREA 1807.58 SQ.FT. 167.93 SQ.M.



KEY SECTION



KEYPLAN



LEVELS 2-15



LEVEL 16



LEVELS 17-19



LEVEL 20

Parkwood

DUBAI HILLS ESTATE

— INTERIORS BY VIDA —

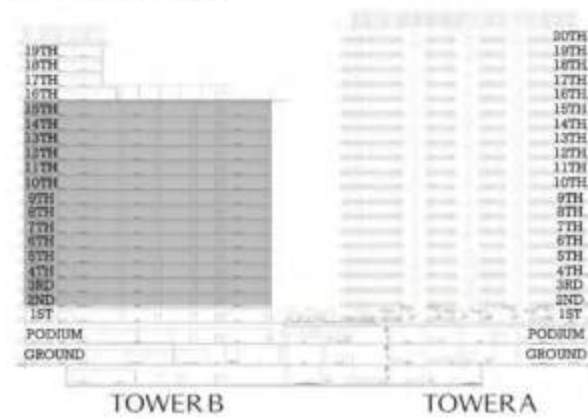
3 BEDROOM TYPE B TOWER B

UNIT 213, 313, 413, 513, 613, 713, 813, 913, 1013, 1113, 1213, 1313, 1413, 1513

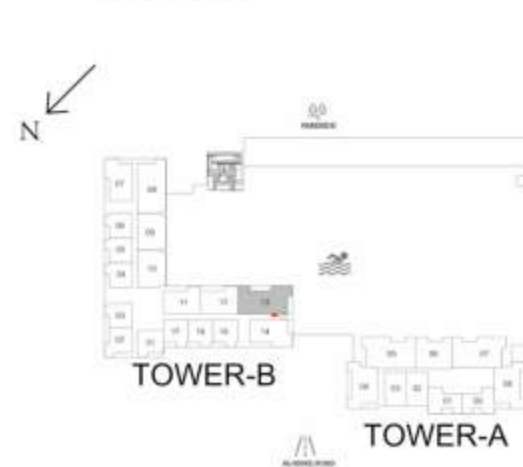
SUITE AREA	1351.62 SQ.FT.	125.57 SQ.M.
BALCONY AREA	225.07 SQ.FT.	20.91 SQ.M.
TOTAL AREA	1576.69 SQ.FT.	146.48 SQ.M.



KEY SECTION



KEYPLAN



LEVELS 2-15

FLOOR PLAN 1. All dimensions are in imperial and metric, and measured from finish to finish excluding construction tolerances. 2. All materials, dimensions, and drawings are approximate only. 3. Information is subject to change without notice, at developer's absolute discretion. 4. Actual area may vary from the stated area. 5. Drawings not to scale. 6. All images used are for illustrative purposes only and do not represent the actual size, features, specifications, fittings, and furnishings. 7. The developer reserves the right to make revisions / alterations, at it's absolute discretion, without any liability whatsoever.

EMAAR

Parkwood

DUBAI HILLS ESTATE

— INTERIORS BY VIDA —

3 BEDROOM TYPE B1 TOWER B

UNIT 208, 308, 408, 508, 608, 708, 808, 908, 1008, 1108,
1208, 1308, 1408, 1508

SUITE AREA 1353.35 SQ.FT. 125.73 SQ.M.

BALCONY AREA 227.22 SQ.FT. 21.11 SQ.M.

TOTAL AREA 1580.57 SQ.FT. 146.84 SQ.M.

UNIT 1608, 1708, 1808, 1908

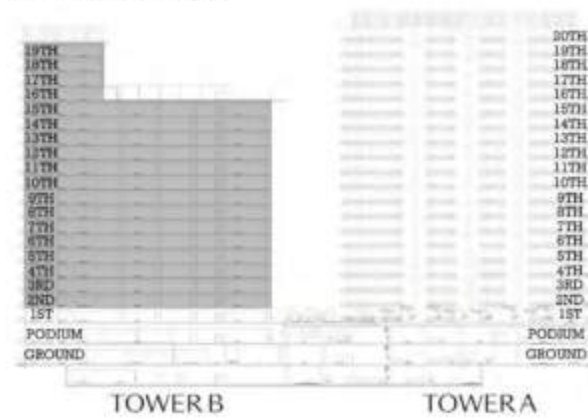
SUITE AREA 1353.35 SQ.FT. 125.73 SQ.M.

BALCONY AREA 236.05 SQ.FT. 21.93 SQ.M.

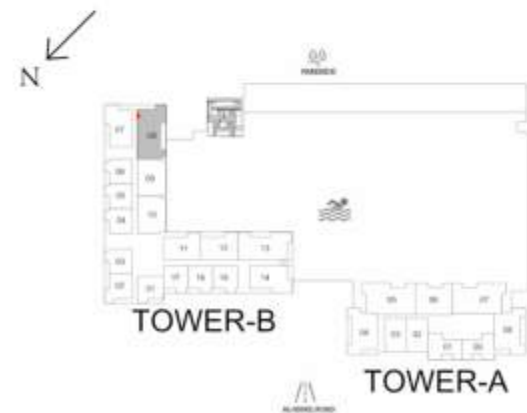
TOTAL AREA 1589.40 SQ.FT. 147.66 SQ.M.



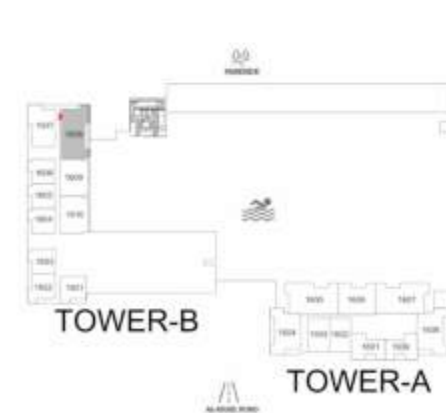
KEY SECTION



KEYPLAN



LEVELS 2-15



LEVEL 16



LEVELS 17-19

Parkwood

DUBAI HILLS ESTATE

— INTERIORS BY VIDA —

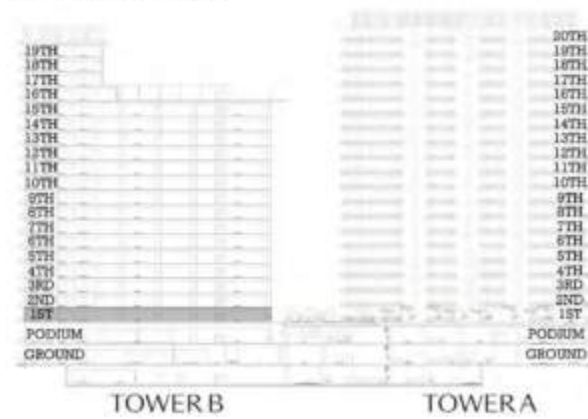
3 BEDROOM TYPE B2 TOWER B

UNIT 108

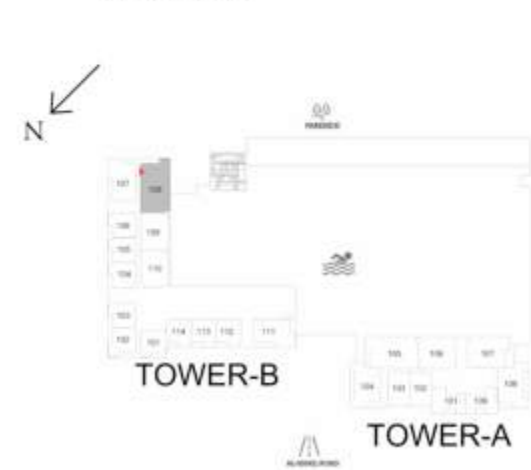
SUITE AREA	1353.67 SQ.FT.	125.76 SQ.M.
BALCONY AREA	467.05 SQ.FT.	43.39 SQ.M.
TOTAL AREA	1820.72 SQ.FT.	169.15 SQ.M.



KEY SECTION



KEYPLAN



LEVEL 1

FLOOR PLAN 1. All dimensions are in imperial and metric, and measured from finish to finish excluding construction tolerances. 2. All materials, dimensions, and drawings are approximate only. 3. Information is subject to change without notice, at developer's absolute discretion. 4. Actual area may vary from the stated area. 5. Drawings not to scale. 6. All images used are for illustrative purposes only and do not represent the actual size, features, specifications, fittings, and furnishings. 7. The developer reserves the right to make revisions / alterations, at it's absolute discretion, without any liability whatsoever.

EMAAR

Parkwood

DUBAI HILLS ESTATE

— INTERIORS BY VIDA —

TOWNHOUSE PODIUM

UNIT TH01

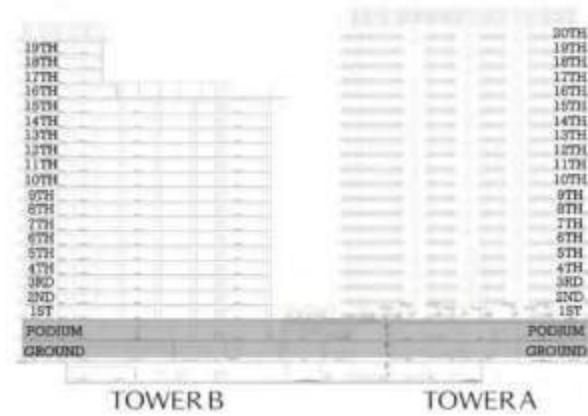
SUITE AREA	2365.80 SQ.FT.	219.79 SQ.M.
BALCONY AREA	1478.10 SQ.FT.	137.32 SQ.M.
TOTAL AREA	3843.90 SQ.FT.	357.11 SQ.M.

UNIT TH11

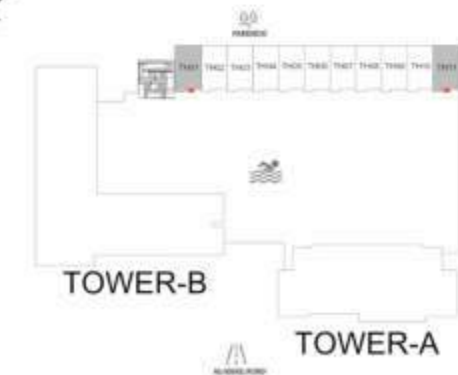
SUITE AREA	2372.48 SQ.FT.	220.41 SQ.M.
BALCONY AREA	1495.32 SQ.FT.	138.92 SQ.M.
TOTAL AREA	3867.80 SQ.FT.	359.33 SQ.M.



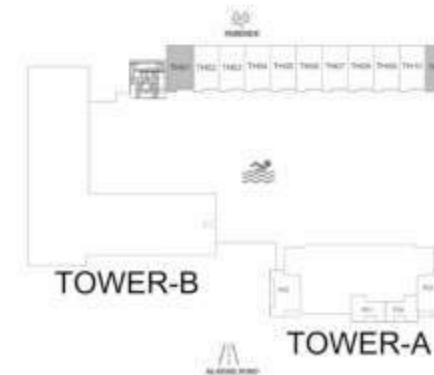
KEY SECTION



KEYPLAN



GROUND LEVEL



PODIUM LEVEL

FLOOR PLAN 1. All dimensions are in imperial and metric, and measured from finish to finish excluding construction tolerances. 2. All materials, dimensions, and drawings are approximate only. 3. Information is subject to change without notice, at developer's absolute discretion. 4. Actual area may vary from the stated area. 5. Drawings not to scale. 6. All images used are for illustrative purposes only and do not represent the actual size, features, specifications, fittings, and furnishings. 7. The developer reserves the right to make revisions / alterations, at it's absolute discretion, without any liability whatsoever.

EMAAR

Parkwood

DUBAI HILLS ESTATE

— INTERIORS BY VIDA —

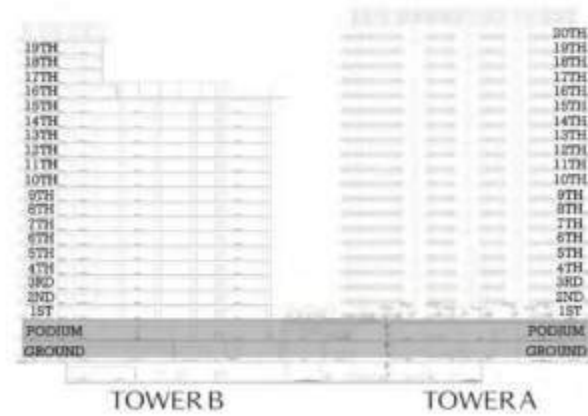
TOWNHOUSE PODIUM

UNIT TH02, TH03, TH04, TH05, TH06, TH07, TH08, TH09, TH10

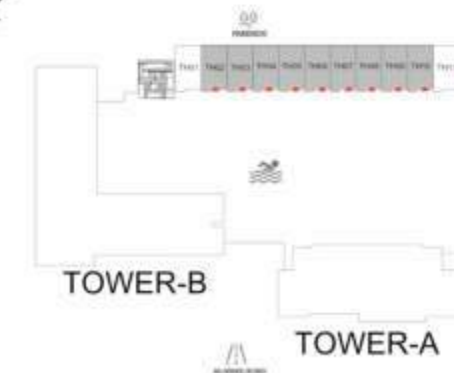
SUITE AREA	2372.69 SQ.FT.	220.43 SQ.M.
BALCONY AREA	1484.99 SQ.FT.	137.96 SQ.M.
TOTAL AREA	3857.68 SQ.FT.	358.39 SQ.M.



KEY SECTION



KEYPLAN



GROUND LEVEL



PODIUM LEVEL



hoûsebook Real Estate Company
since 2012 in the UAE

+971 (4) 412-5007

Managers of partnerships



Alevtina Kapustina



Svetlana Guseva

Office

Housebook Real Estate LCC
Dubai Marina, office 2502-01, Dubai, UAE
Company license: 1128098

ae.housebook.deals

partner@housebook.ae

