

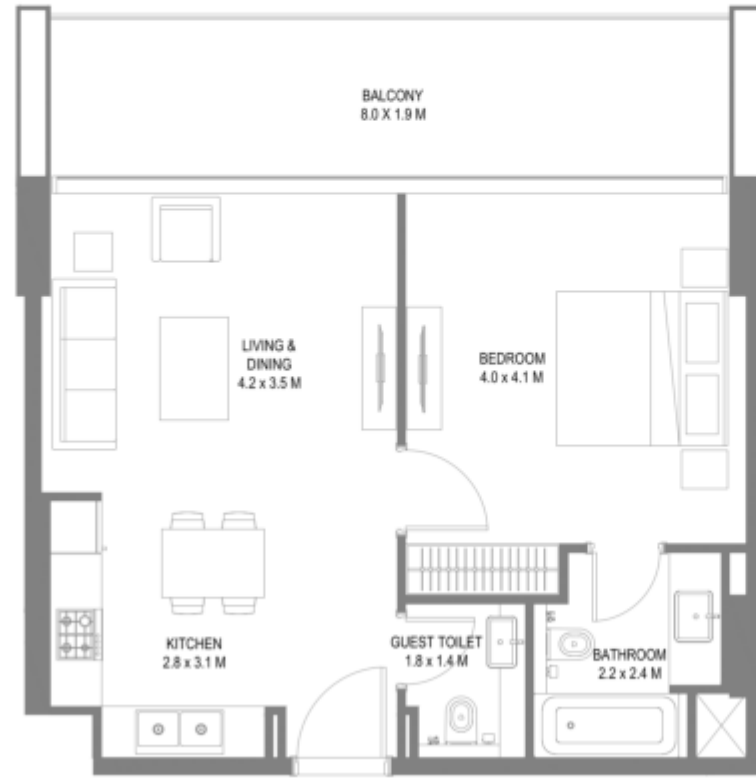


Safa 1

مخططات الوحدات السكنية

Unit Plans

1 Bedroom Type A1



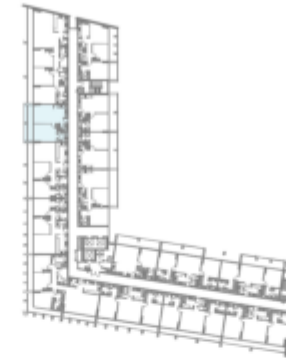
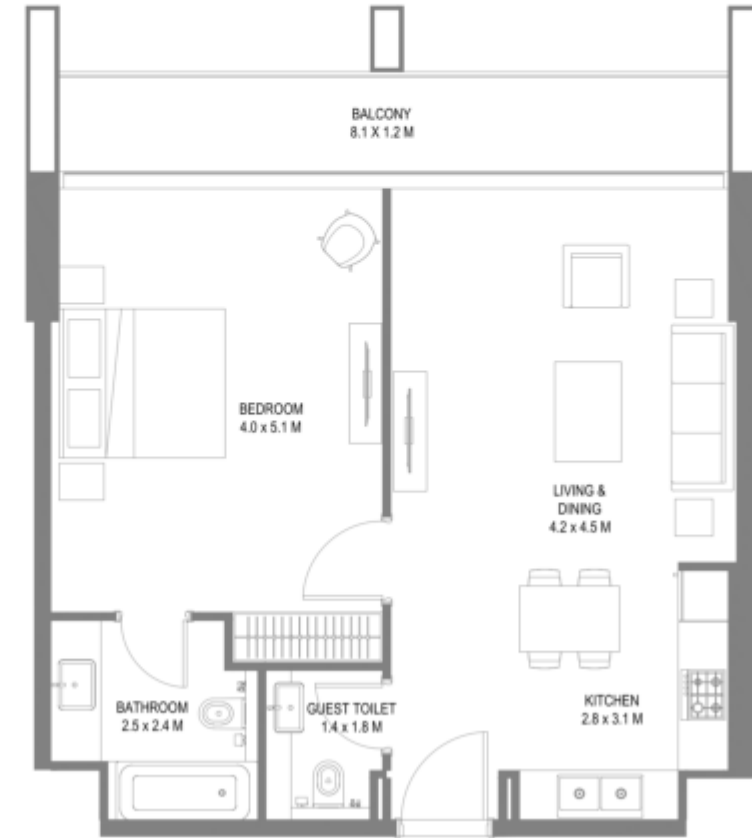
1ST FLOOR PLAN



2ND, 3RD, 4TH, 5TH, 6TH & 7TH FLOOR PLAN

Unit Area: 58.52 Sqm (630 Sqft) | **Balcony Area:** 16.20 Sqm (175 Sqft) | **Total Area:** 74.72 Sqm (805 Sqft)

1 Bedroom Type B1



1ST, 2ND, 3RD, 4TH, 5TH, 6TH & 7TH FLOOR PLAN

Unit Area: 66.57 Sqm (717 Sqft) | **Balcony Area:** 15.48 Sqm (167 Sqft) | **Total Area:** 82.05 Sqm (884 Sqft)

1 Bedroom Type C1



1ST, 2ND, 3RD, 4TH, 5TH, 6TH & 7TH FLOOR PLAN

Unit Area: 68.42 Sqm (737 Sqft) | **Balcony Area:** 19.60 Sqm (211 Sqft) | **Total Area:** 88.02 Sqm (948 Sqft)

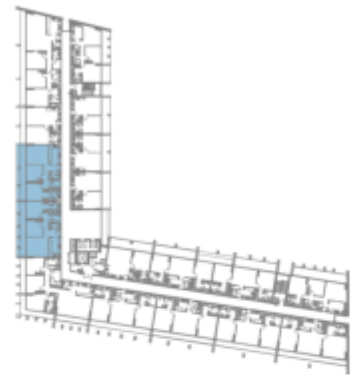
2 Bedroom Type A1



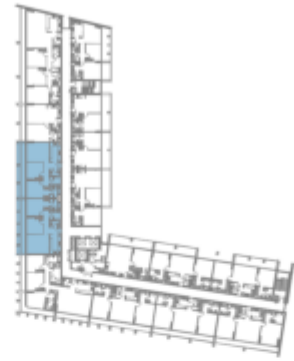
1ST, 2ND, 3RD, 4TH, 5TH, 6TH & 7TH FLOOR PLAN

Unit Area: 91.31 Sqm (983 Sqft) | **Balcony Area:** 24.00 Sqm (259 Sqft) | **Total Area:** 115.31 Sqm (1,242 Sqft)

2 Bedroom Type B1



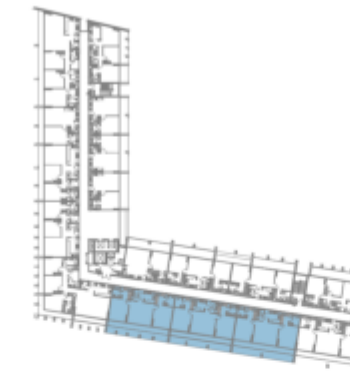
1ST FLOOR PLAN



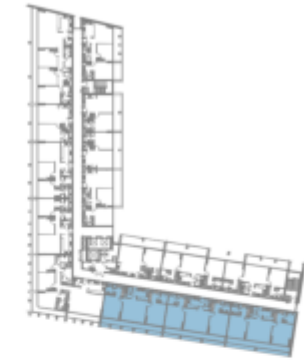
2ND, 3RD, 4TH, 5TH, 6TH & 7TH FLOOR PLAN

Unit Area: 98.75 Sqm (1,063 Sqft) | **Balcony Area:** 23.24 Sqm (251 Sqft) | **Total Area:** 121.99 Sqm (1,314 Sqft)

2 Bedroom Type C1



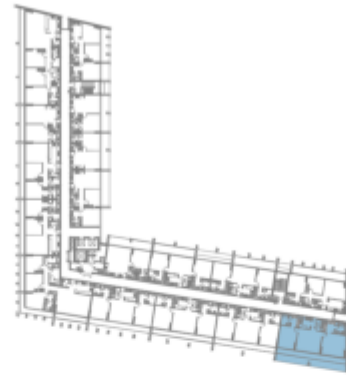
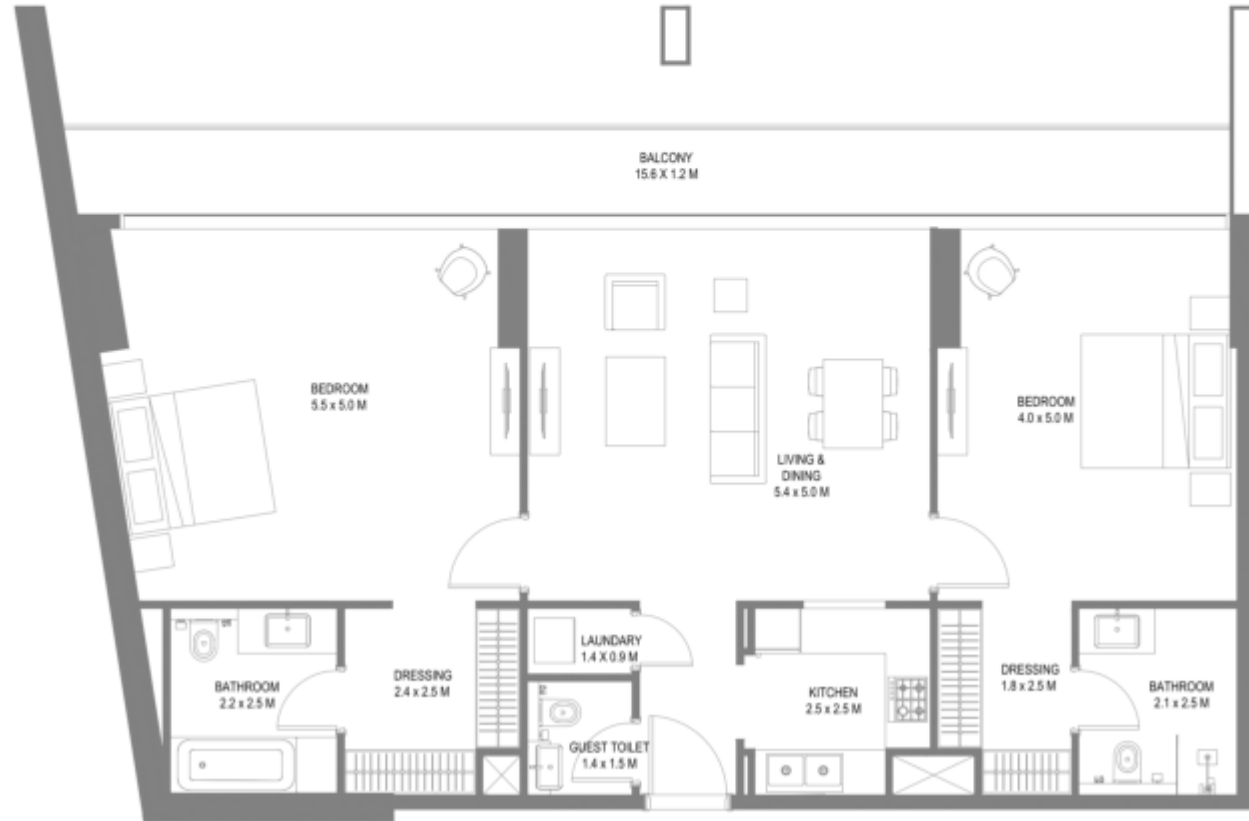
1ST FLOOR PLAN



2ND, 3RD, 4TH, 5TH, 6TH & 7TH FLOOR PLAN

Unit Area: 116.96 Sqm (1,259 Sqft) | **Balcony Area:** 29.39 Sqm (317 Sqft) | **Total Area:** 146.35 Sqm (1,576 Sqft)

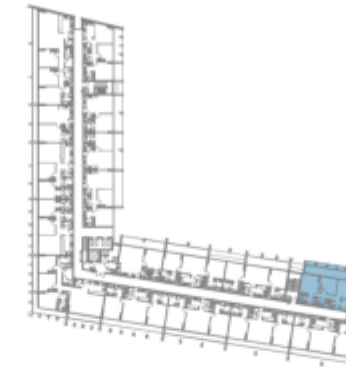
2 Bedroom Type D1



1ST, 2ND, 3RD, 4TH & 5TH FLOOR PLAN

Unit Area: 122.68 Sqm (1,321 Sqft) | **Balcony Area:** 32.17 Sqm (346 Sqft) | **Total Area:** 154.85 Sqm (1,667 Sqft)

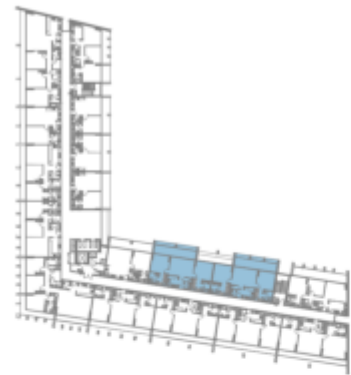
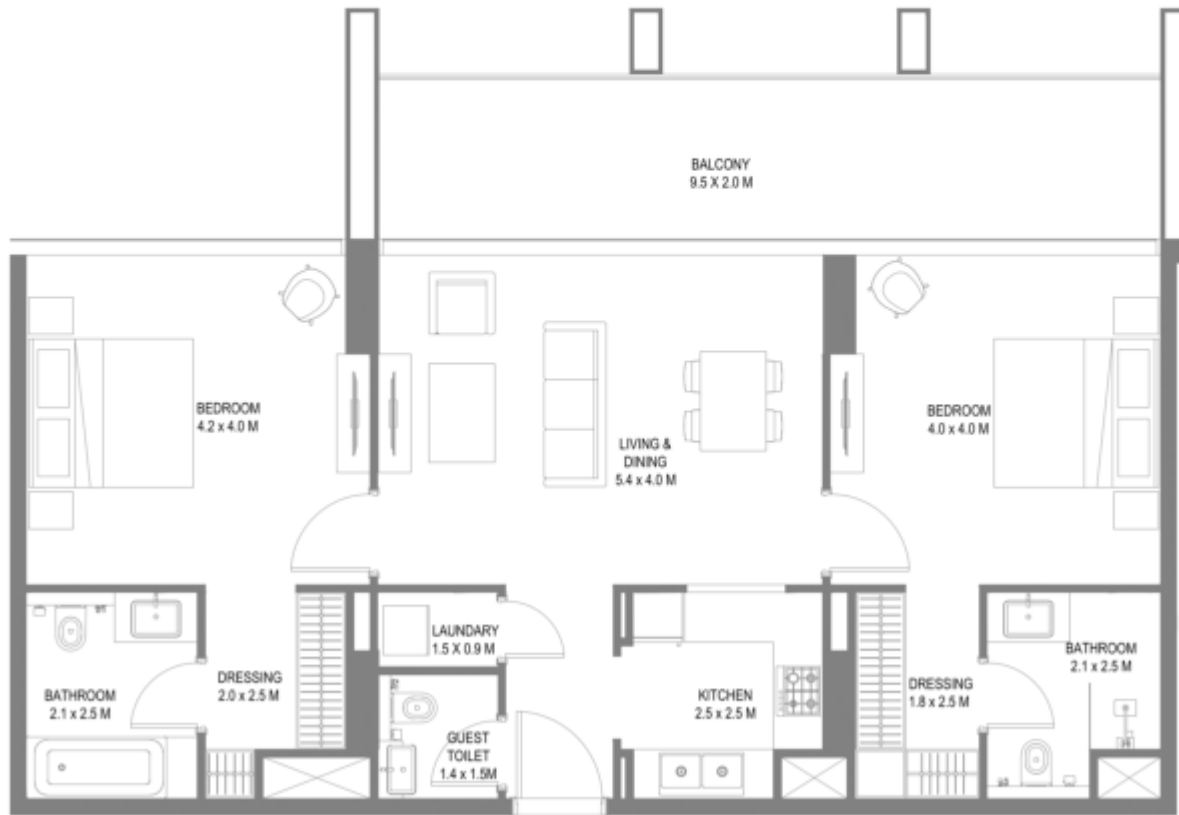
2 Bedroom Type E1



1ST, 2ND, 3RD, 4TH & 5TH FLOOR PLAN

Unit Area: 95.39 Sqm (1,027 Sqft) | **Balcony Area:** 25.14 Sqm (271 Sqft) | **Total Area:** 120.53 Sqm (1,298 Sqft)

2 Bedroom Type F1



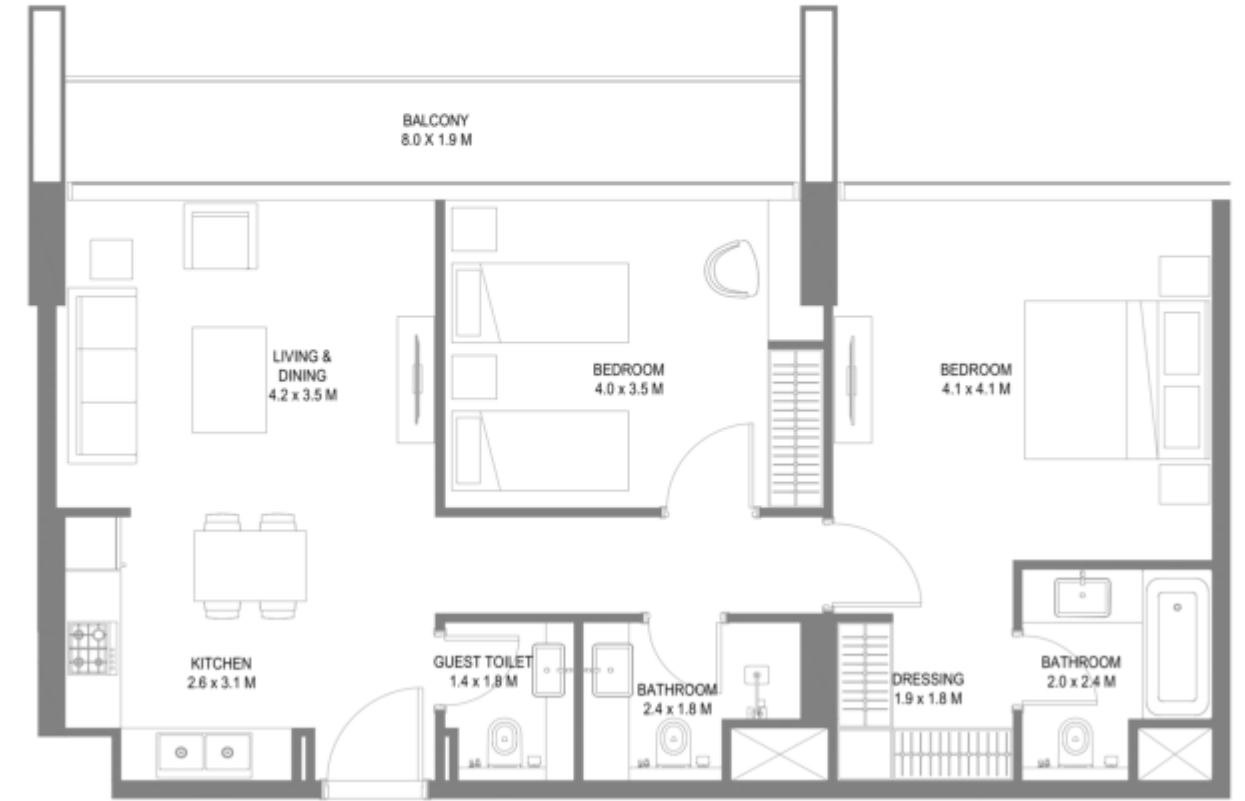
1ST FLOOR PLAN



2ND, 3RD, 4TH, 5TH, 6TH & 7TH FLOOR PLAN

Unit Area: 97.05 Sqm (1,045 Sqft) | **Balcony Area:** 19.20 Sqm (207 Sqft) | **Total Area:** 116.25 Sqm (1,252 Sqft)

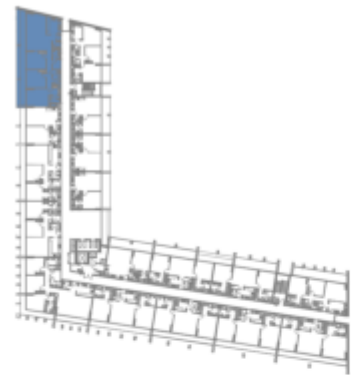
2 Bedroom Type G1



2ND, 3RD, 4TH, 5TH, 6TH & 7TH FLOOR PLAN

Unit Area: 87.40 Sqm (941 Sqft) | **Balcony Area:** 16.10 Sqm (174 Sqft) | **Total Area:** 103.50 Sqm (1,115 Sqft)

3 Bedroom Type A1



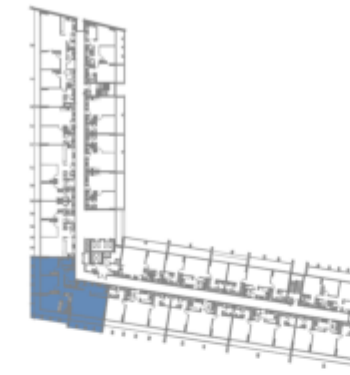
1ST FLOOR PLAN



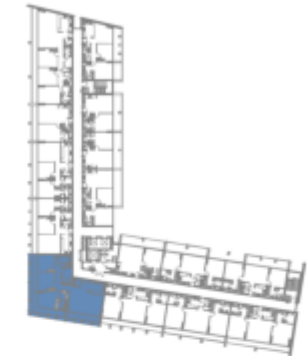
2ND, 3RD, 4TH, 5TH, 6TH & 7TH FLOOR PLAN

Unit Area: 164.91 Sqm (1,776 Sqft) | **Balcony Area:** 41.51 Sqm (446 Sqft) | **Total Area:** 206.42 Sqm (2,222 Sqft)

3 Bedroom Type B1



1ST FLOOR PLAN



2ND, 3RD, 4TH, 5TH, 6TH & 7TH FLOOR PLAN

Unit Area: 153.31 Sqm (1,651 Sqft) | **Balcony Area:** 54.01 Sqm (581 Sqft) | **Total Area:** 207.32 Sqm (2,232 Sqft)

1-Measurements are indicative 'finish to finish' in Metric & Imperial excluding construction tolerance. 2-Plot/unit dimensions may vary from brochure, and unit types/plans may exist as mirrored versions; 3-All images used are for illustrative purposes only. 4-Unless stated otherwise, all fittings and interior decorative items shown are for illustrative purposes only. 5-The developer reserves the right to make alterations, at its absolute discretion, without any liability whatsoever up to the final 'as built' status.

تشير الأرقام الواردة إلى القياسات النهائية من سطح الحائط المشطيب إلى سطح الحائط المشطيب المقابل له وبالوحدات المترية والإنجليزية باستثناء التفاوت المسموح به في الأعمال الإنشائية. 1- قد تختلف أبعاد القطع/الوحدات عما هو موضح في البرشور. وقد يتم عرض أوصاف/مخططات الوحدات بنسخ معكوسة؛ 3-جميع الصور الواردة هي لأغراض التوضيح فقط. 4-جميع الأجهزة والتجهيزات الداخلية الواردة هي لأغراض التوضيح فقط. ما لم يرد خلاف ذلك صراحة، 5-يحفظ المطور، ووفقاً لتقديره المطلق، بحقه في إجراء التعديلات دون أي مسؤولية مترتبة على ذلك حتى إنجاز العمل بصورة نهائية.

housebook Real Estate Company
since 2012 in the UAE

+971 (4) 412-5007

Managers of partnerships



Alevtina Kapustina



Svetlana Guseva

Office

Housebook Real Estate LCC

Dubai Marina, office 2502-01, Dubai, UAE

Company license: 1128098

ae.housebook.deals

partner@housebook.ae

