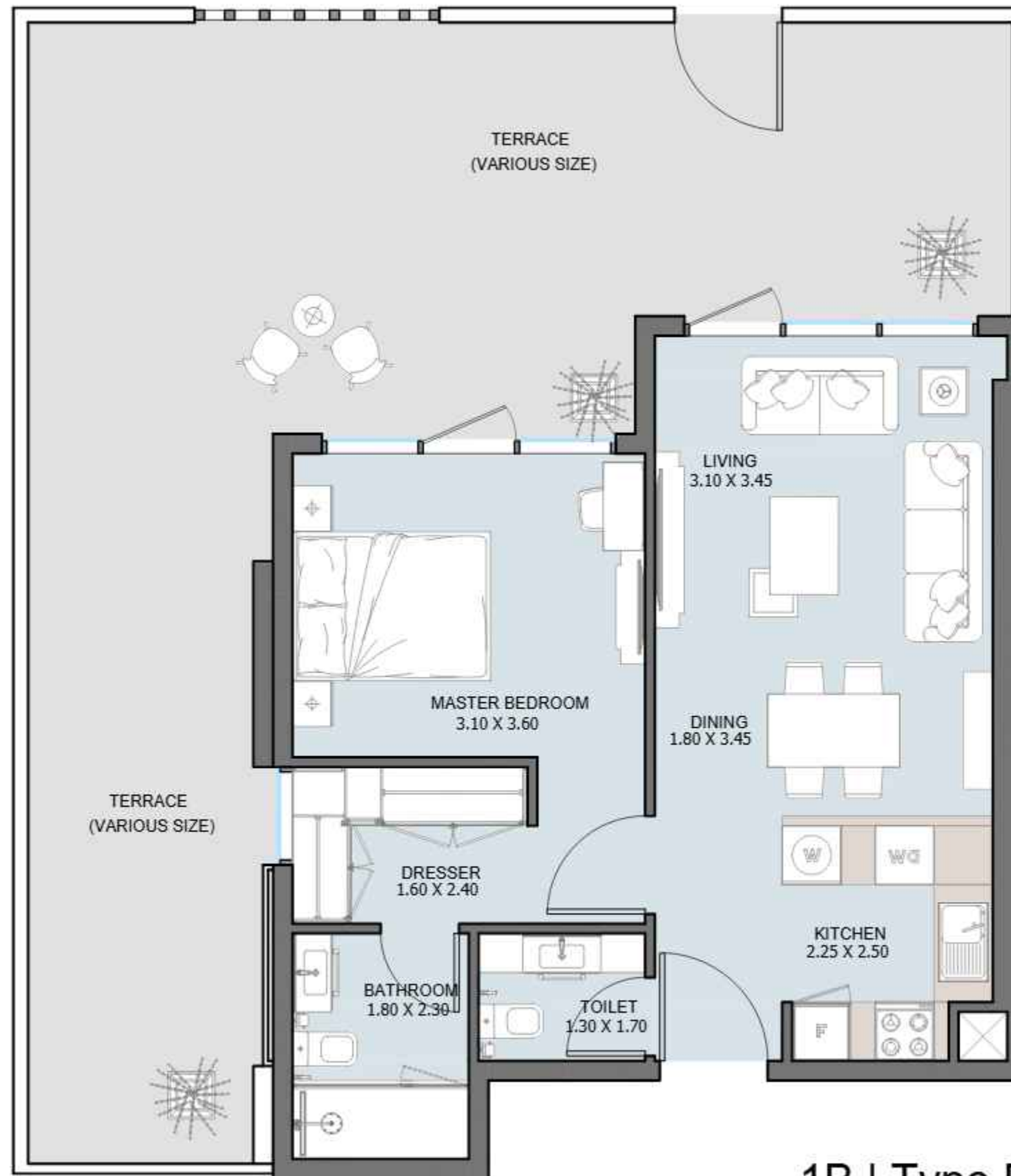


1B | Type A

TOWER (A,B,C) - From 4th to 23rd Floor

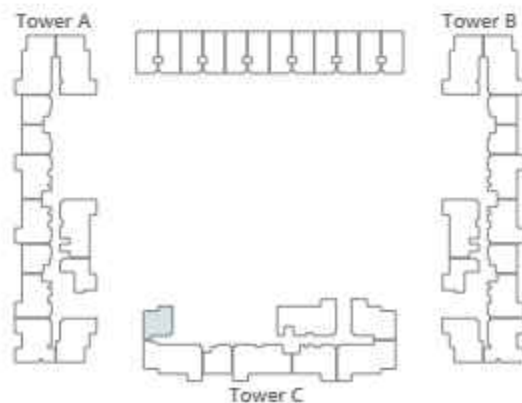
Internal Area	564.89 to 571.02 sq.ft
Outdoor Area	143.38 to 205.05 sq.ft
Total Area	708.26 to 769.94 sq.ft



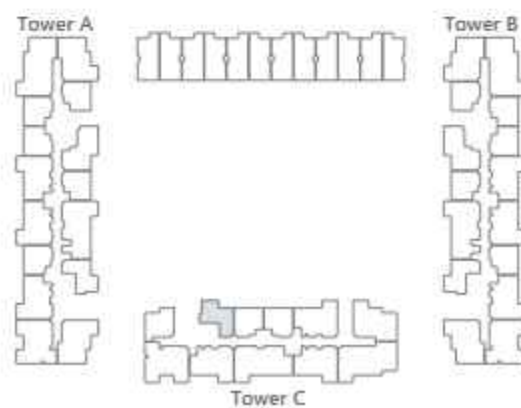
1B | Type B

TOWER (C) - From 4th to 23rd Floor

Internal Area	600.84 sq.ft
Outdoor Area	196.98 to 646.91 sq.ft
Total Area	797.82 to 1247.75 sq.ft



All drawings and dimensions are approximate. Drawings are not to scale and are subject to change without notice. The developer reserves the right to make revisions. The units are measured at typical floors in the building and columns may vary in size depending on the floor level. The furnishing and accessories shown are for representation only. The availability, length and width of the balcony varies depending on which floor and which orientation the unit is located within the building. There will be slight differences in the internal areas between the same unit types depending on the shaft sizes that go through the units.

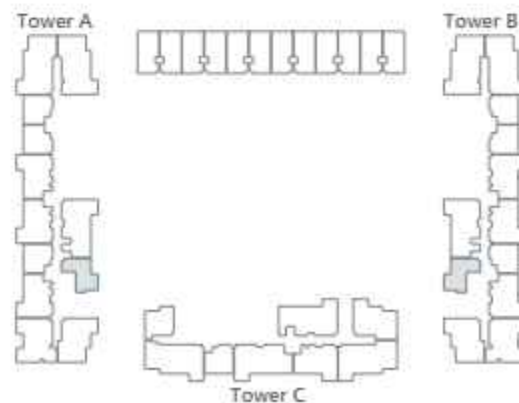
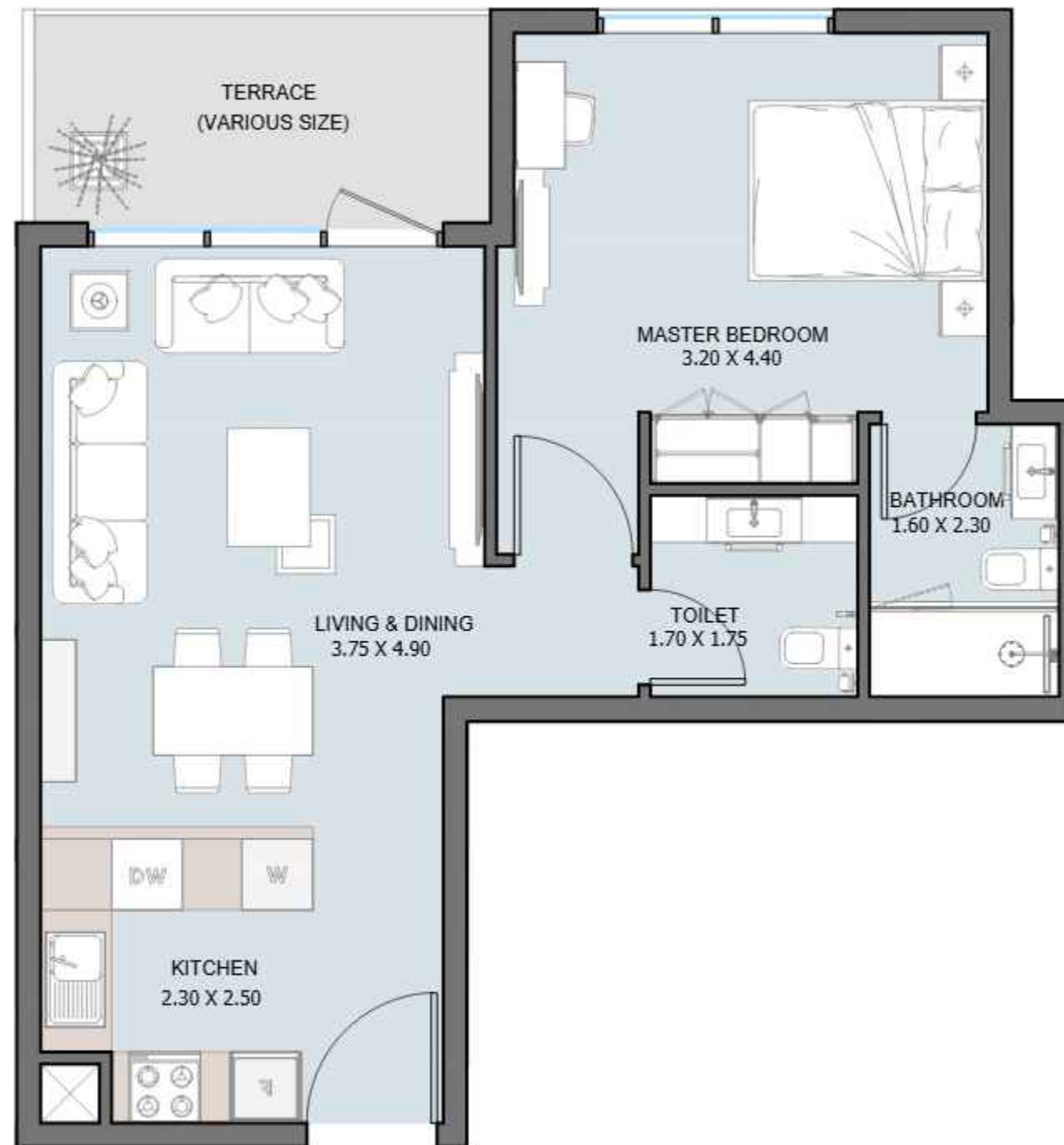


1B | Type C

TOWER (C) - From 5th to 23rd Floor

Internal Area	611.17 sq.ft
Outdoor Area	72.23 sq.ft
Total Area	683.40 sq.ft

All drawings and dimensions are approximate. Drawings are not to scale and are subject to change without notice. The developer reserves the right to make revisions. The units are measured at typical floors in the building and columns may vary in size depending on the floor level. The furnishing and accessories shown are for representation only. The availability, length and width of the balcony varies depending on which floor and which orientation the unit is located within the building. There will be slight differences in the internal areas between the same unit types depending on the shaft sizes that go through the units.

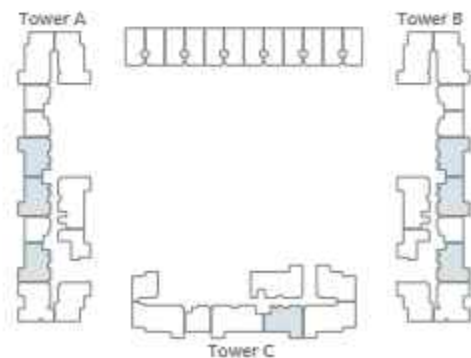
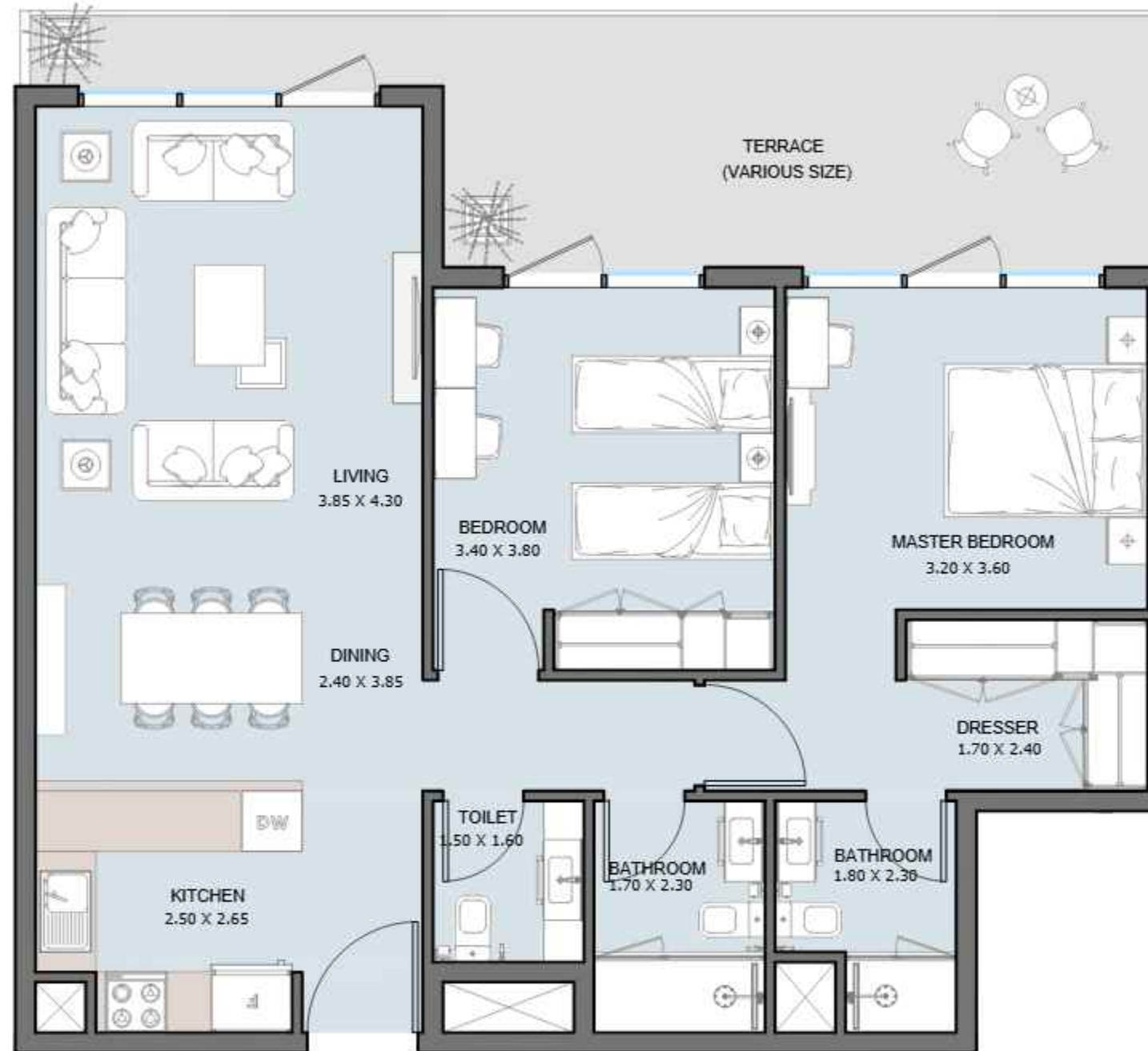


1B | Type D

TOWER (A,B) - From 4th to 23rd Floor

Internal Area	607.62 to 607.73 sq.ft
Outdoor Area	75.56 to 267.59 sq.ft
Total Area	683.29 to 875.21 sq.ft

All drawings and dimensions are approximate. Drawings are not to scale and are subject to change without notice. The developer reserves the right to make revisions. The units are measured at typical floors in the building and columns may vary in size depending on the floor level. The furnishing and accessories shown are for representation only. The availability, length and width of the balcony varies depending on which floor and which orientation the unit is located within the building. There will be slight differences in the internal areas between the same unit types depending on the shaft sizes that go through the units.

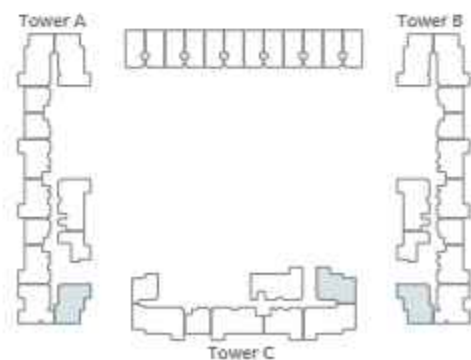
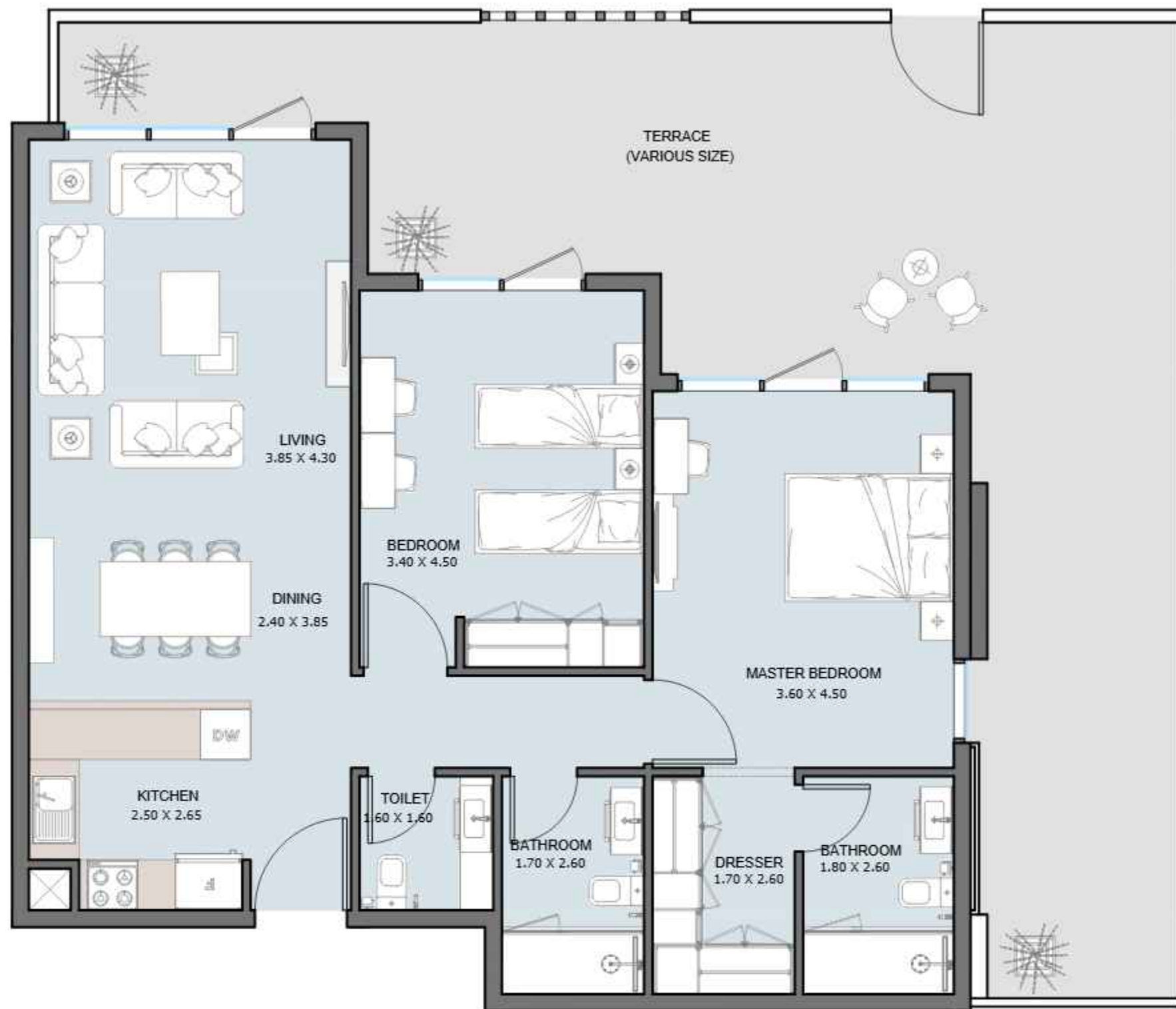


2B | Type A

TOWER (A,B,C) - From 4th to 23rd Floor

Internal Area	939.58 to 943.46 sq.ft
Outdoor Area	137.56 to 228.41 sq.ft
Total Area	1079.08 to 1169.93 sq.ft

All drawings and dimensions are approximate. Drawings are not to scale and are subject to change without notice. The developer reserves the right to make revisions. The units are measured at typical floors in the building and columns may vary in size depending on the floor level. The furnishing and accessories shown are for representation only. The availability, length and width of the balcony varies depending on which floor and which orientation the unit is located within the building. There will be slight differences in the internal areas between the same unit types depending on the shaft sizes that go through the units.

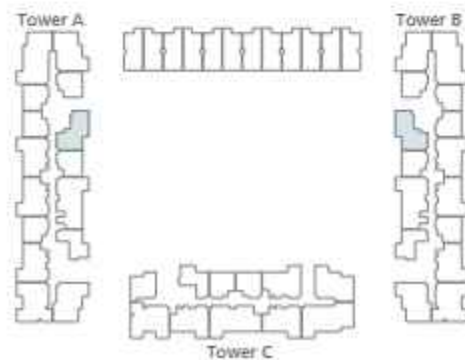
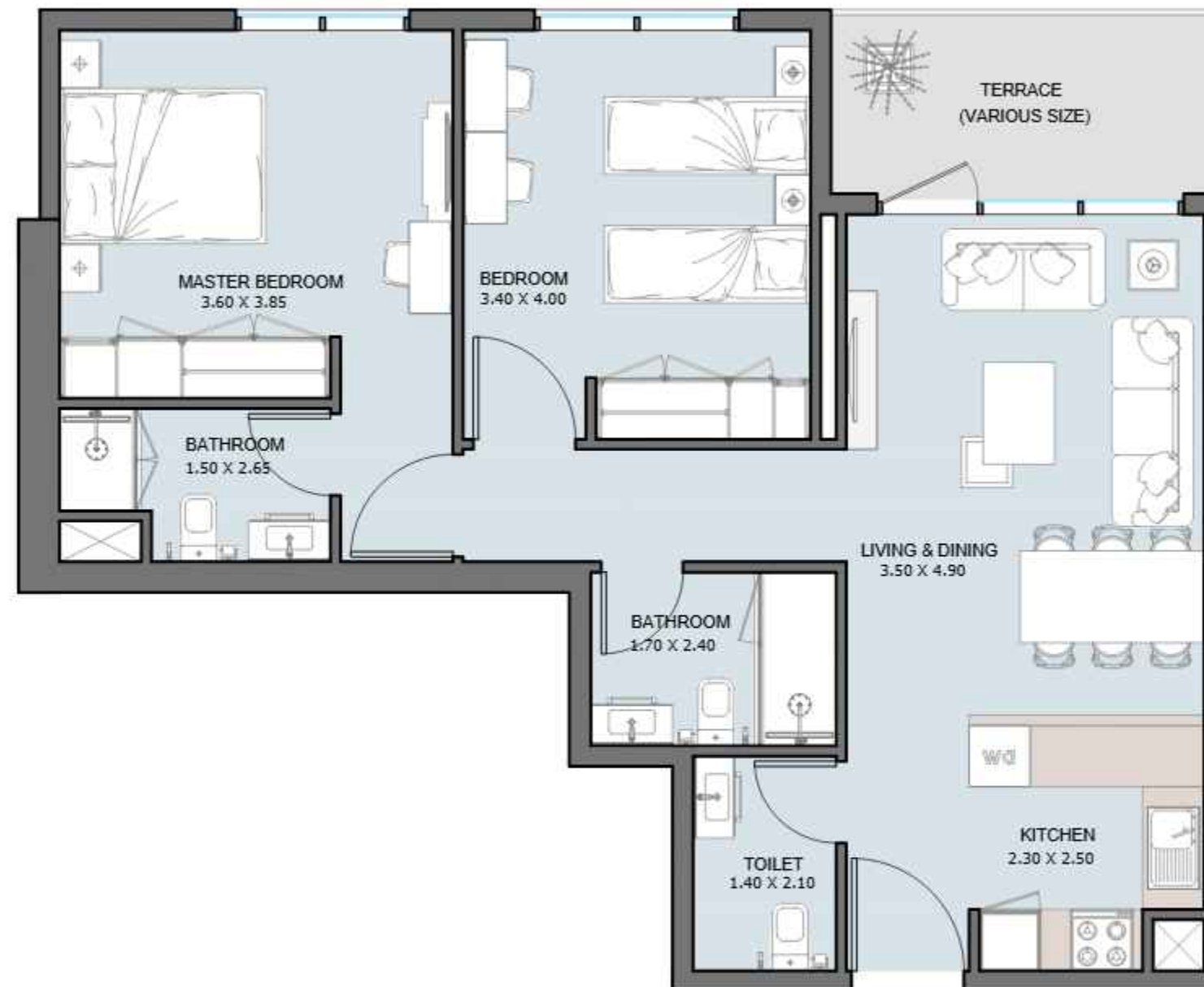


2B | Type B

TOWER (A,B,C) - From 4th to 23rd Floor

Internal Area	1030.11 to 1039.69 sq.ft
Outdoor Area	187.29 to 813.11 sq.ft
Total Area	1217.40 to 1852.79 sq.ft

All drawings and dimensions are approximate. Drawings are not to scale and are subject to change without notice. The developer reserves the right to make revisions. The units are measured at typical floors in the building and columns may vary in size depending on the floor level. The furnishing and accessories shown are for representation only. The availability, length and width of the balcony varies depending on which floor and which orientation the unit is located within the building. There will be slight differences in the internal areas between the same unit types depending on the shaft sizes that go through the units.

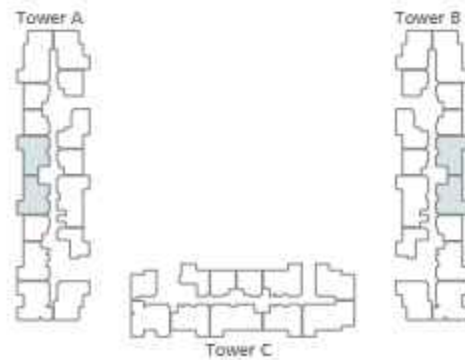
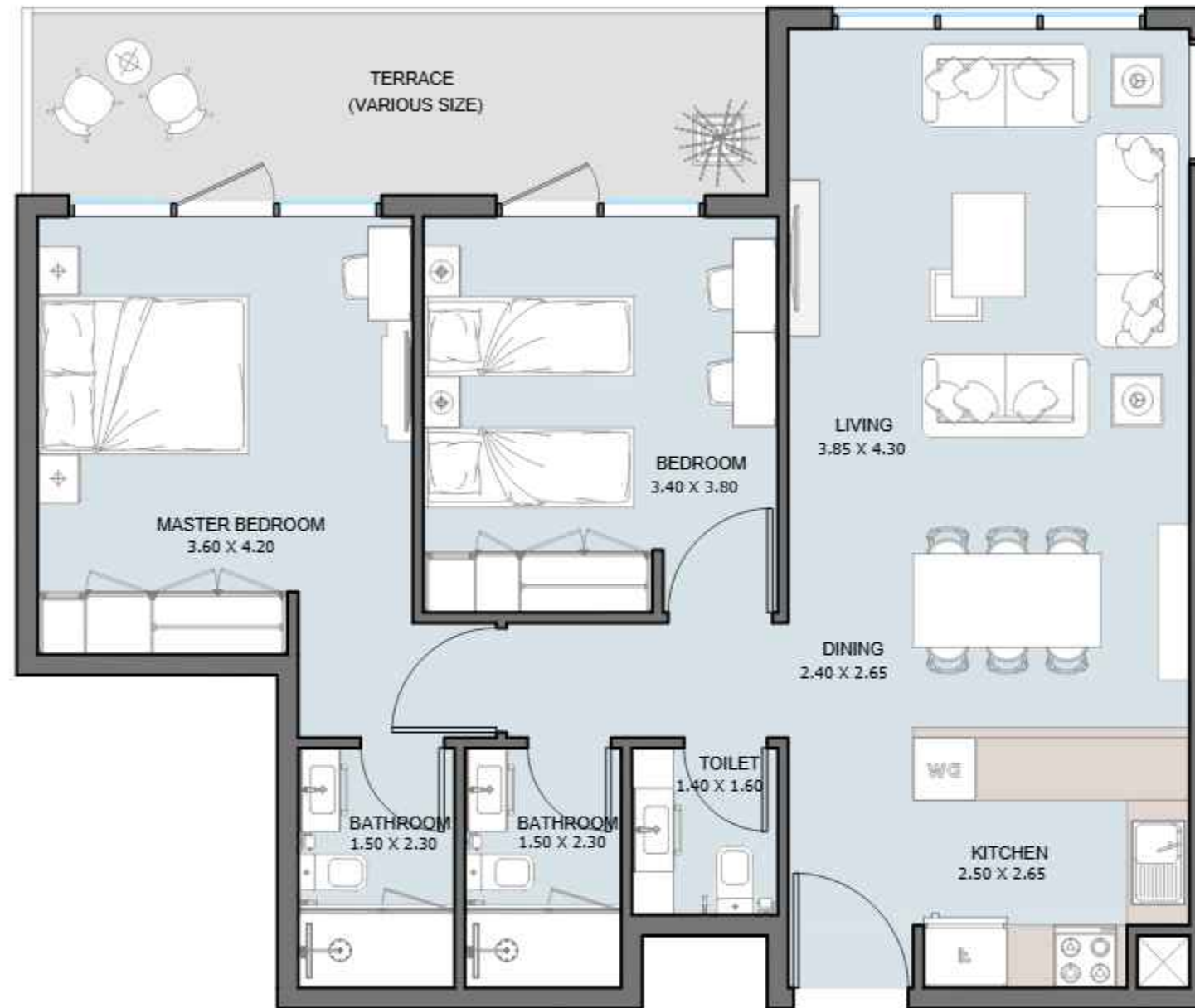


2B | Type C

TOWER (A,B) - From 5th Floor to 23rd Floor

Internal Area	844.86 sq.ft
Outdoor Area	72.66 sq.ft
Total Area	917.51 sq.ft

All drawings and dimensions are approximate. Drawings are not to scale and are subject to change without notice. The developer reserves the right to make revisions. The units are measured at typical floors in the building and columns may vary in size depending on the floor level. The furnishing and accessories shown are for representation only. The availability, length and width of the balcony varies depending on which floor and which orientation the unit is located within the building. There will be slight differences in the internal areas between the same unit types depending on the shaft sizes that go through the units.

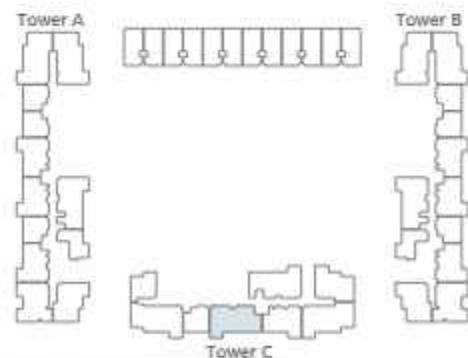
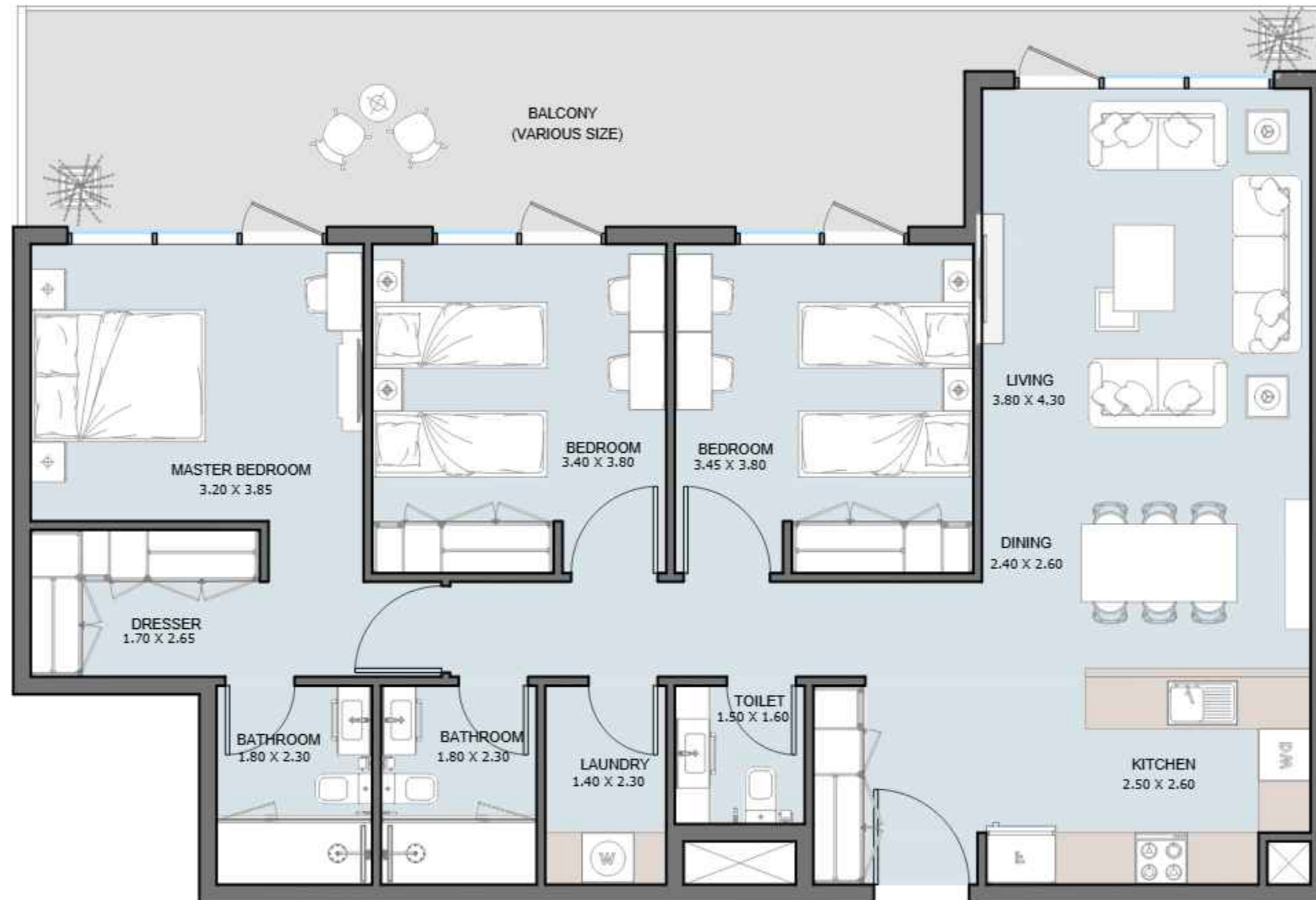


2B | Type D

TOWER (A,B) - 10th Floor

Internal Area	904.49 sq.ft
Outdoor Area	137.56 sq.ft
Total Area	1042.05 sq.ft

All drawings and dimensions are approximate. Drawings are not to scale and are subject to change without notice. The developer reserves the right to make revisions. The units are measured at typical floors in the building and columns may vary in size depending on the floor level. The furnishing and accessories shown are for representation only. The availability, length and width of the balcony varies depending on which floor and which orientation the unit is located within the building. There will be slight differences in the internal areas between the same unit types depending on the shaft sizes that go through the units.

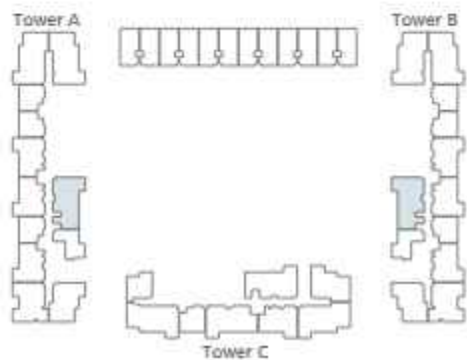
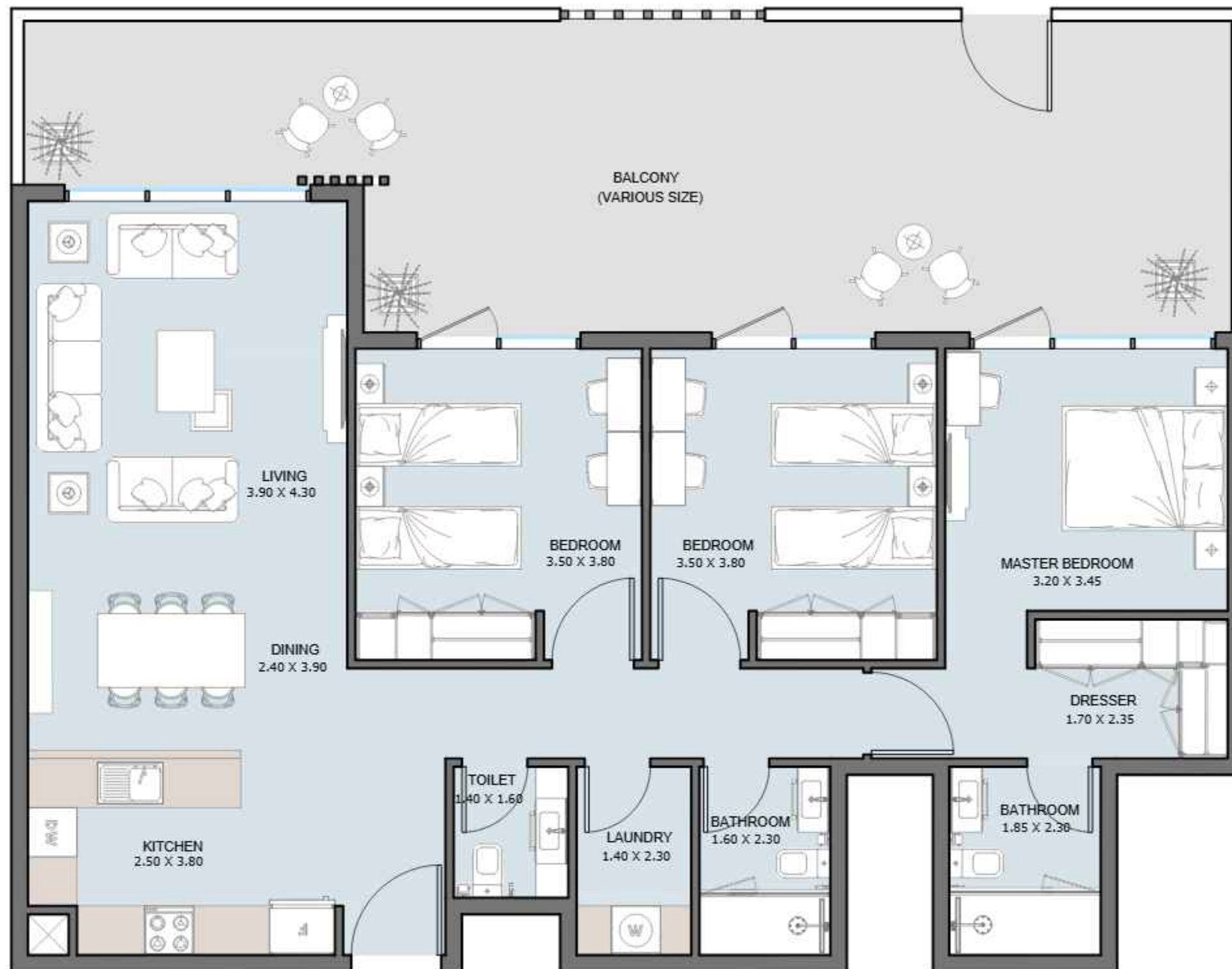


3B | Type A1

TOWER (C) - From 4th Floor to 16th Floor

Internal Area	1251.30	sq.ft
Outdoor Area	211.19 to 332.71	sq.ft
Total Area	1462.49 to 1584.02	sq.ft

All drawings and dimensions are approximate. Drawings are not to scale and are subject to change without notice. The developer reserves the right to make revisions. The units are measured at typical floors in the building and columns may vary in size depending on the floor level. The furnishing and accessories shown are for representation only. The availability, length and width of the balcony varies depending on which floor and which orientation the unit is located within the building. There will be slight differences in the internal areas between the same unit types depending on the shaft sizes that go through the units.

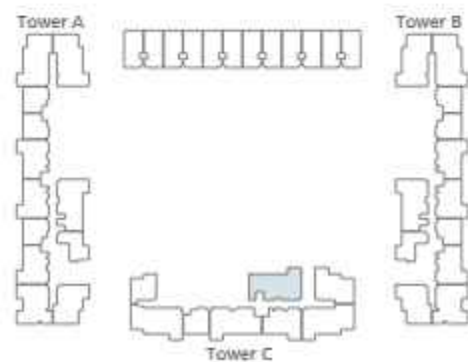
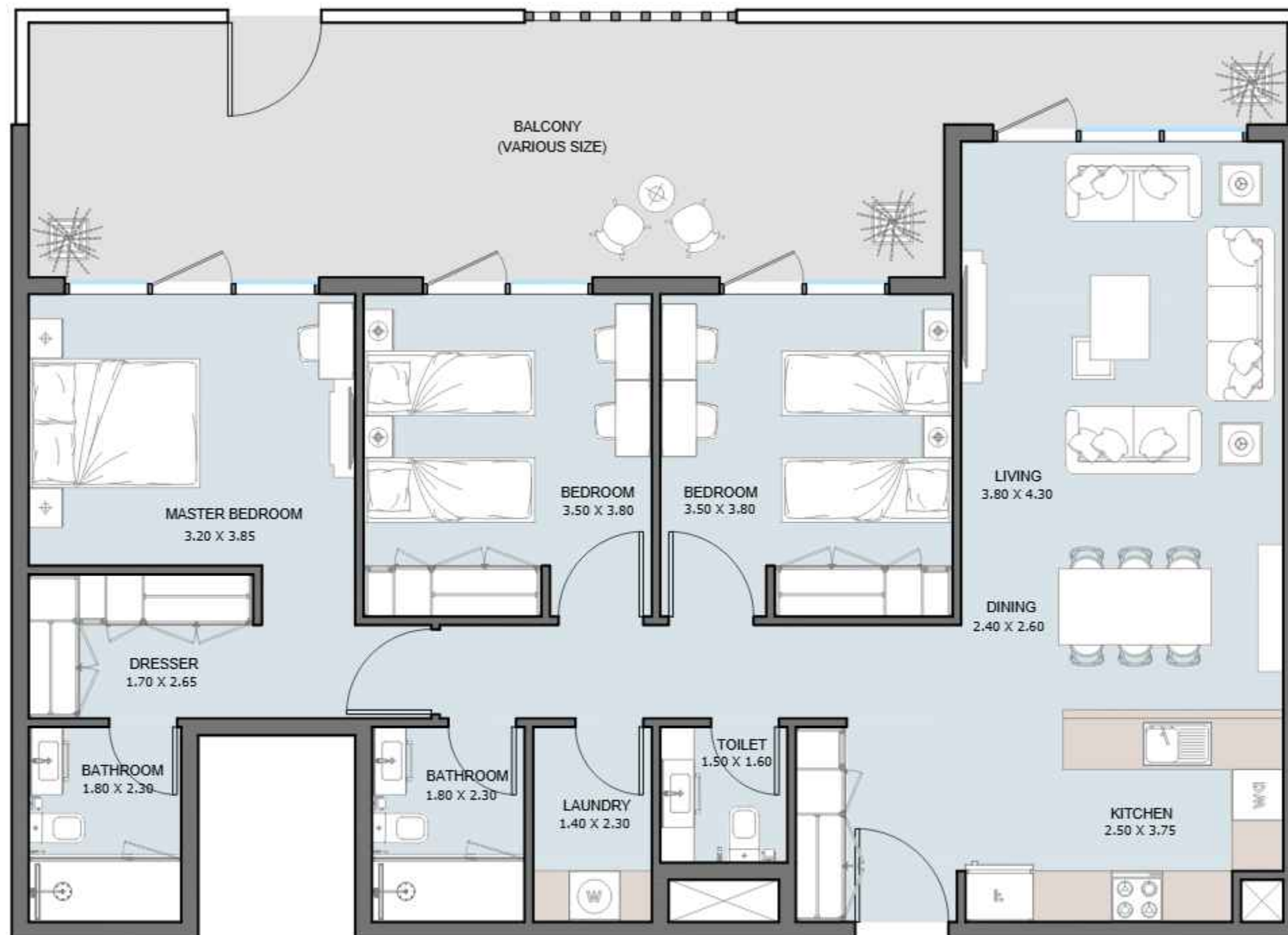


3B | Type A2

TOWER (A,B) - From 4th to 23rd Floor

Internal Area	1224.72	sq.ft
Outdoor Area	206.34 to 552.30	sq.ft
Total Area	1431.06 to 1777.01	sq.ft

All drawings and dimensions are approximate. Drawings are not to scale and are subject to change without notice. The developer reserves the right to make revisions. The units are measured at typical floors in the building and columns may vary in size depending on the floor level. The furnishing and accessories shown are for representation only. The availability, length and width of the balcony varies depending on which floor and which orientation the unit is located within the building. There will be slight differences in the internal areas between the same unit types depending on the shaft sizes that go through the units.

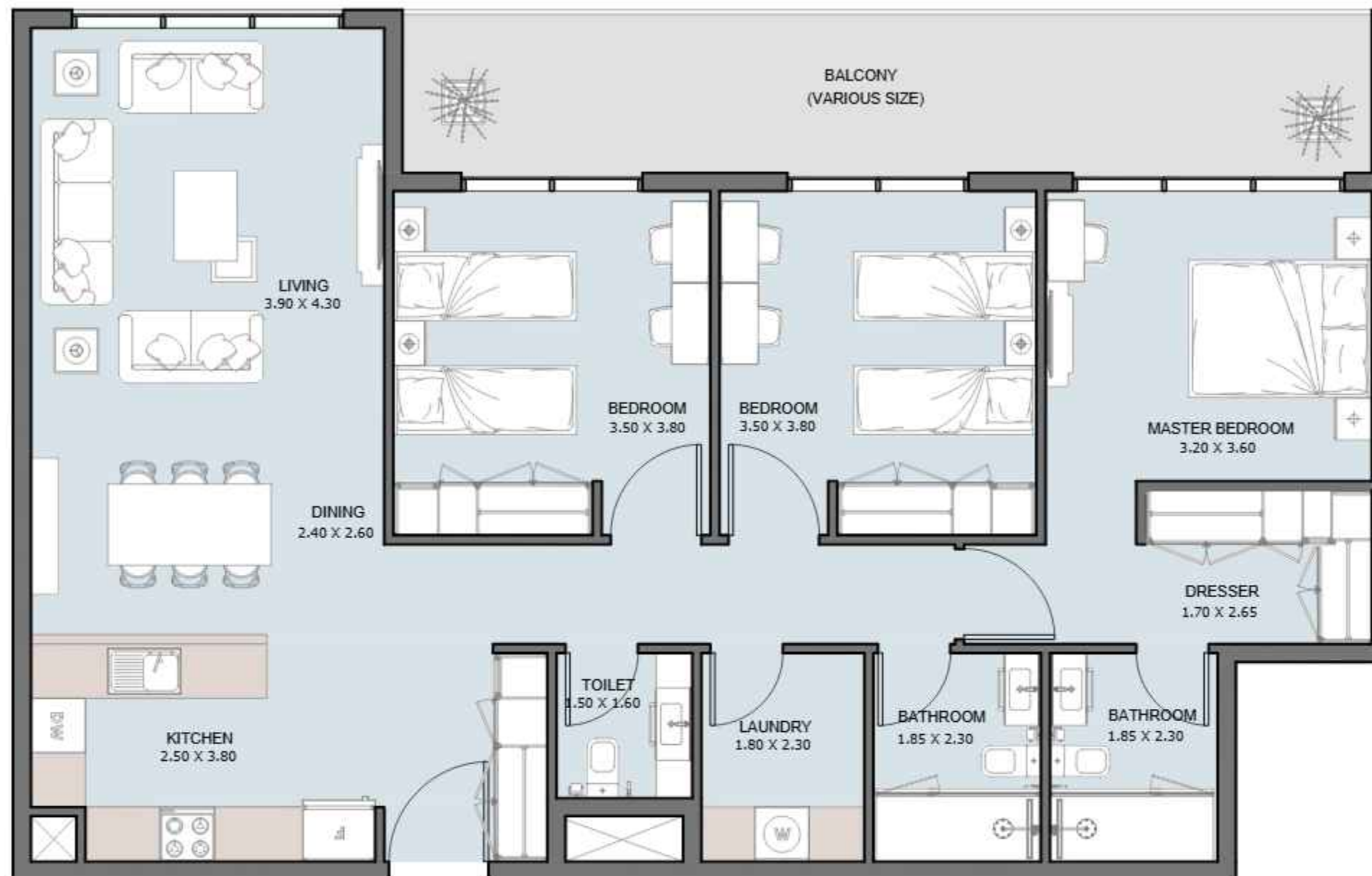


3B | Type A3

TOWER (C) - 4th Floor

Internal Area	1266.27	sq.ft
Outdoor Area	430.88	sq.ft
Total Area	1697.14	sq.ft

All drawings and dimensions are approximate. Drawings are not to scale and are subject to change without notice. The developer reserves the right to make revisions. The units are measured at typical floors in the building and columns may vary in size depending on the floor level. The furnishing and accessories shown are for representation only. The availability, length and width of the balcony varies depending on which floor and which orientation the unit is located within the building. There will be slight differences in the internal areas between the same unit types depending on the shaft sizes that go through the units.



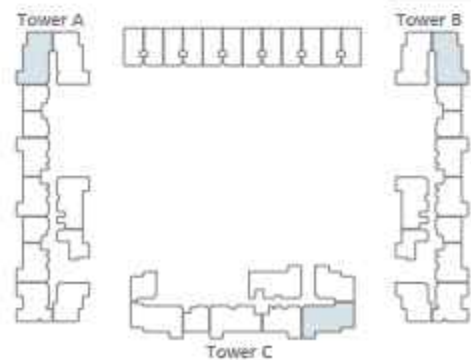
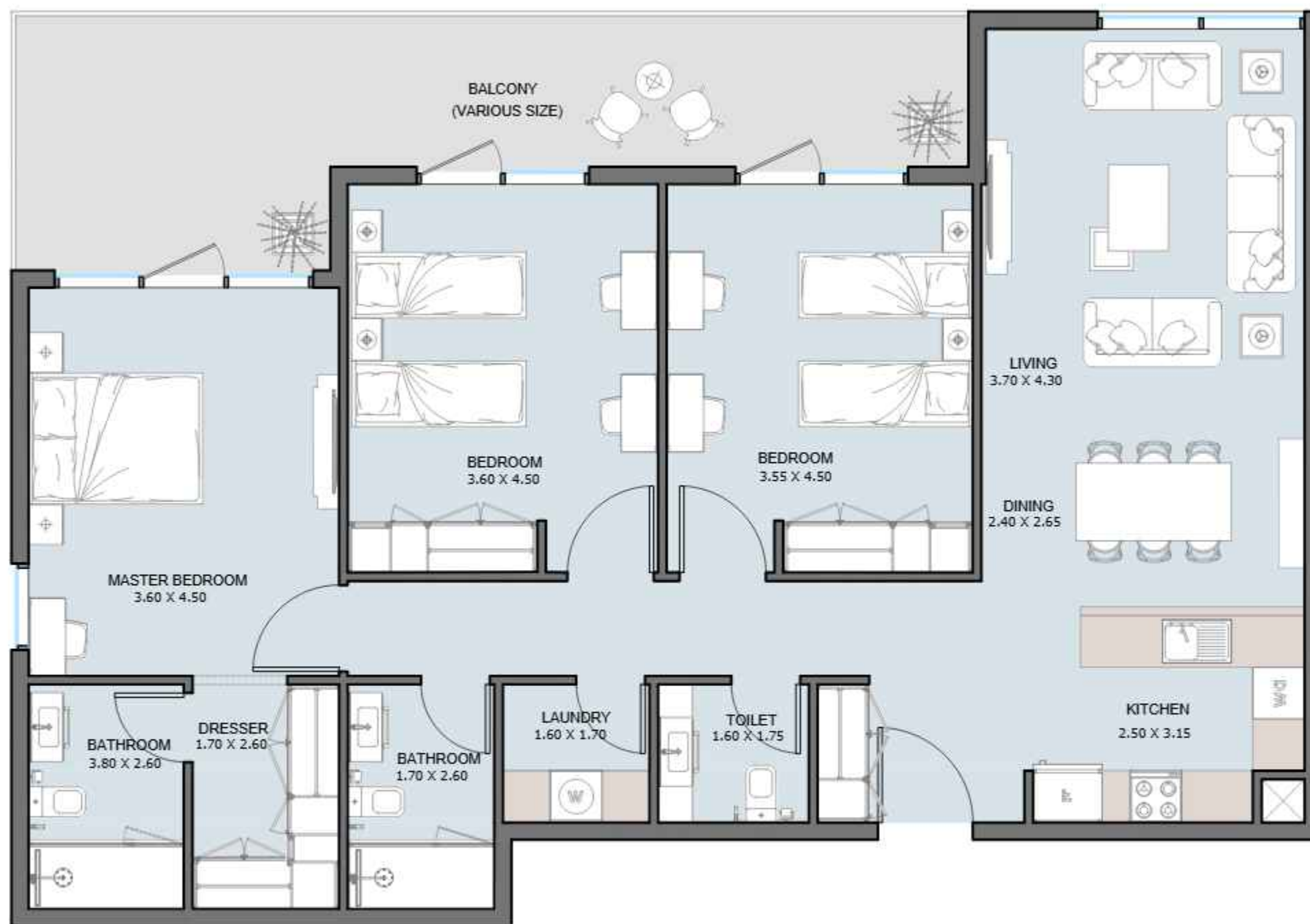
3B | Type A4

TOWER (A,B) - 20th to 23th Floor

Internal Area	1263.90 to 1264.87	sq.ft
Outdoor Area	209.25 to 210.22	sq.ft
Total Area	1474.12	sq.ft



All drawings and dimensions are approximate. Drawings are not to scale and are subject to change without notice. The developer reserves the right to make revisions. The units are measured at typical floors in the building and columns may vary in size depending on the floor level. The furnishing and accessories shown are for representation only. The availability, length and width of the balcony varies depending on which floor and which orientation the unit is located within the building. There will be slight differences in the internal areas between the same unit types depending on the shaft sizes that go through the units.

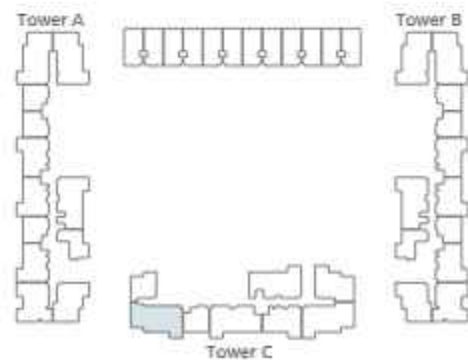
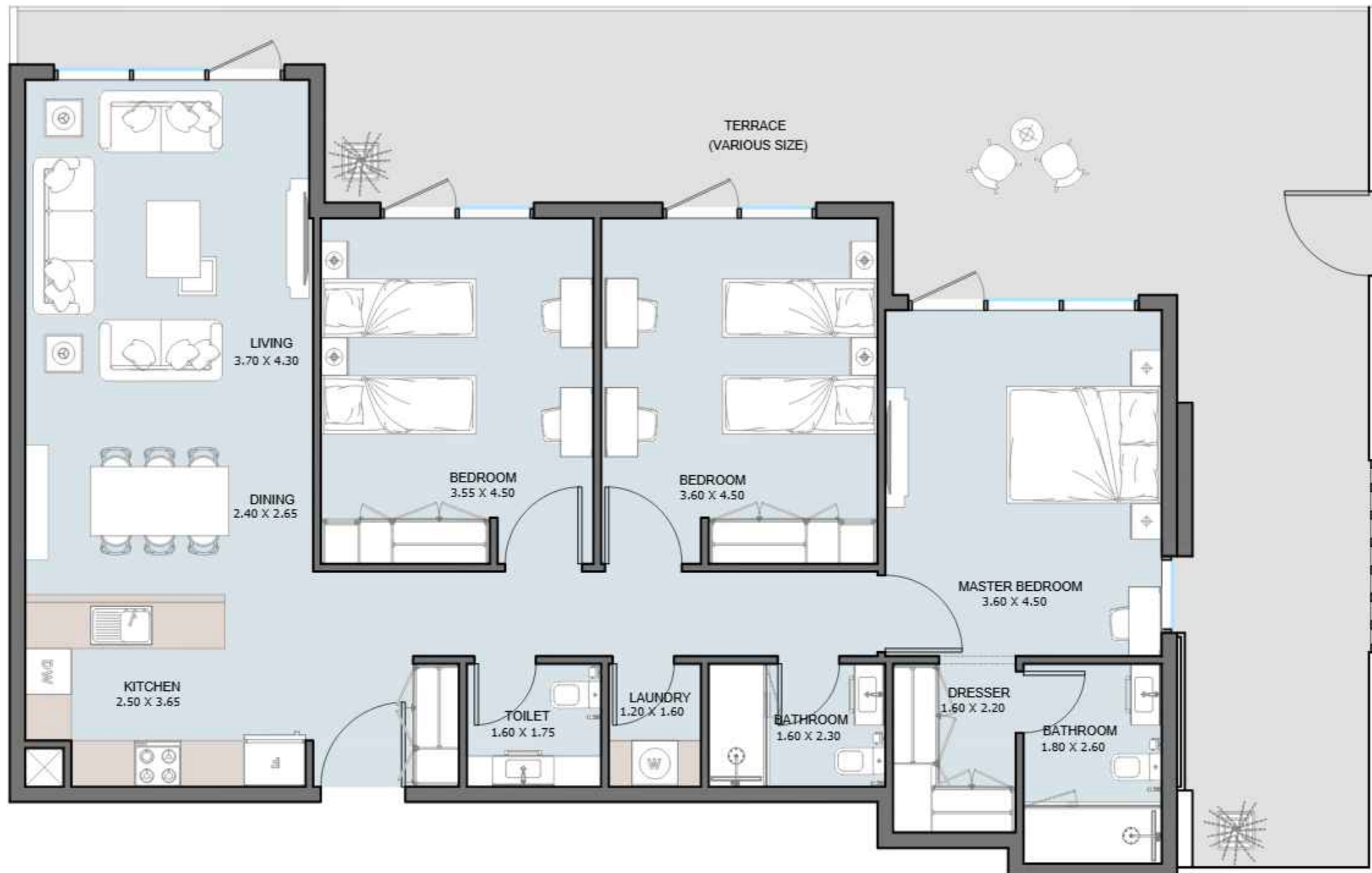


3B | Type B1

TOWER (A,B,C) - From 4th to 23rd Floor

Internal Area	1338.06 to 1340	sq.ft
Outdoor Area	262.85 to 705.86	sq.ft
Total Area	1600.91 to 2043.74	sq.ft

All drawings and dimensions are approximate. Drawings are not to scale and are subject to change without notice. The developer reserves the right to make revisions. The units are measured at typical floors in the building and columns may vary in size depending on the floor level. The furnishing and accessories shown are for representation only. The availability, length and width of the balcony varies depending on which floor and which orientation the unit is located within the building. There will be slight differences in the internal areas between the same unit types depending on the shaft sizes that go through the units.



3B | Type B2

TOWER (C) - 4th Floor

Internal Area	1310.29	sq.ft
Outdoor Area	706	sq.ft
Total Area	2016.29	sq.ft

All drawings and dimensions are approximate. Drawings are not to scale and are subject to change without notice. The developer reserves the right to make revisions. The units are measured at typical floors in the building and columns may vary in size depending on the floor level. The furnishing and accessories shown are for representation only. The availability, length and width of the balcony varies depending on which floor and which orientation the unit is located within the building. There will be slight differences in the internal areas between the same unit types depending on the shaft sizes that go through the units.

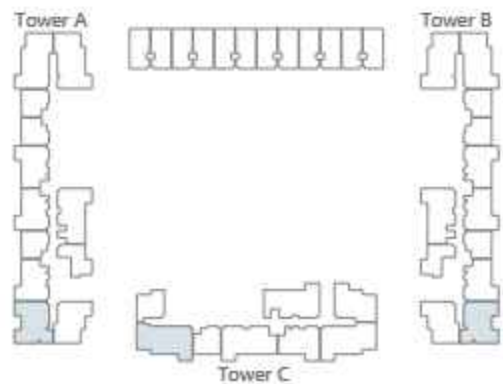


3B | Type B3

TOWER (A,B) - 4th Floor

Internal Area	1340.54	sq.ft
Outdoor Area	720.32	sq.ft
Total Area	2060.86	sq.ft

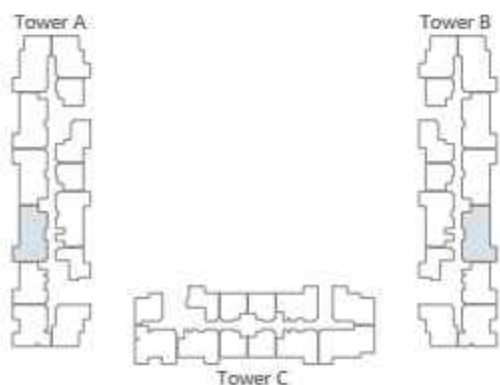
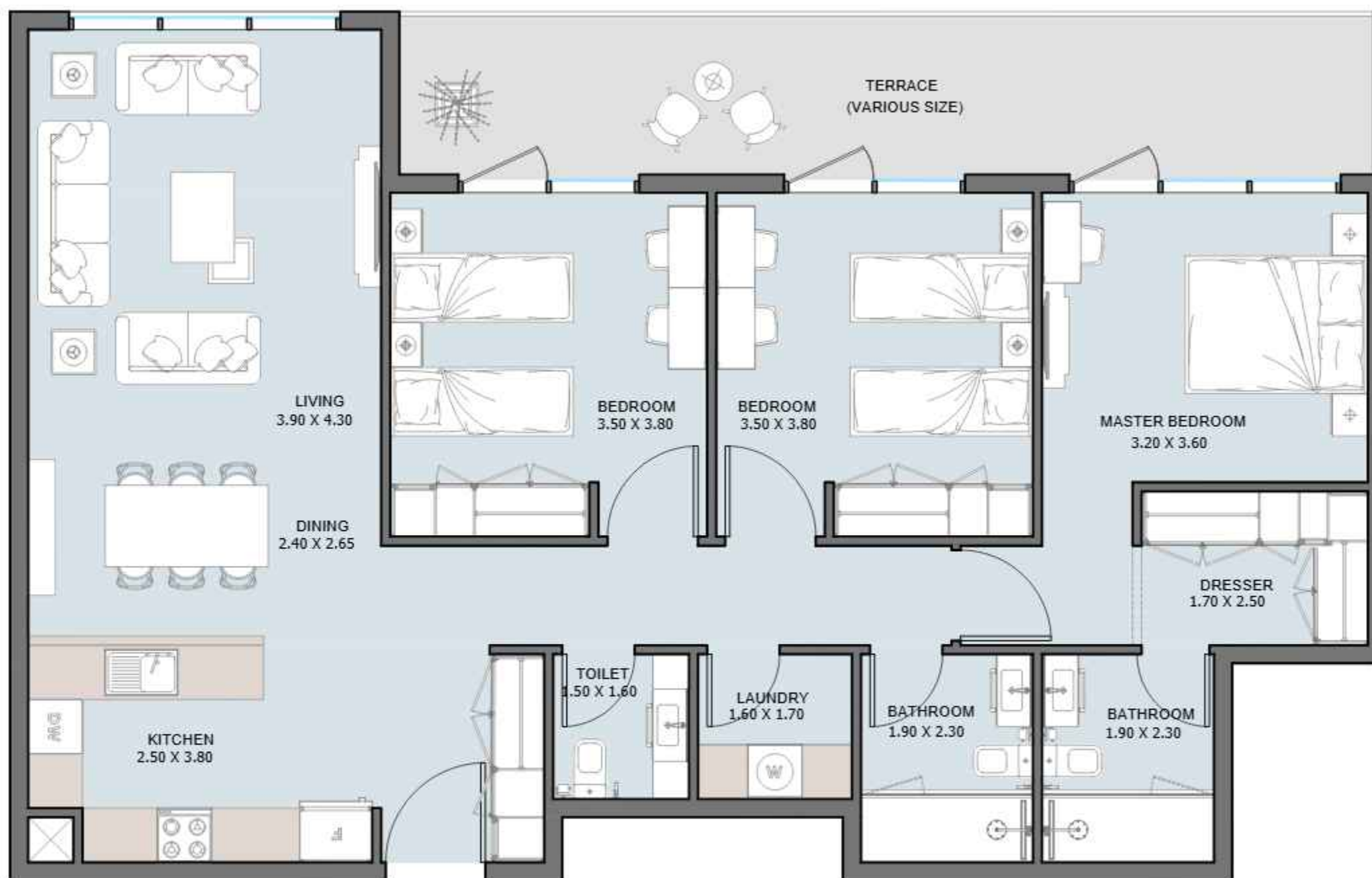
All drawings and dimensions are approximate. Drawings are not to scale and are subject to change without notice. The developer reserves the right to make revisions. The units are measured at typical floors in the building and columns may vary in size depending on the floor level. The furnishing and accessories shown are for representation only. The availability, length and width of the balcony varies depending on which floor and which orientation the unit is located within the building. There will be slight differences in the internal areas between the same unit types depending on the shaft sizes that go through the units.



3B | Type B4

TOWER (A,B,C) - 4th to 23th Floor

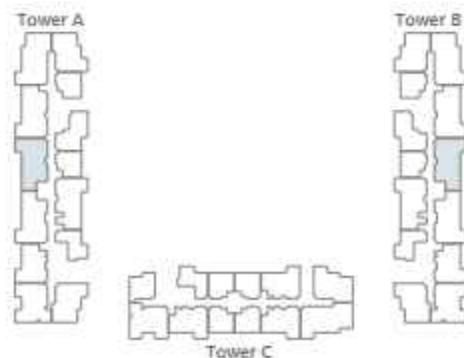
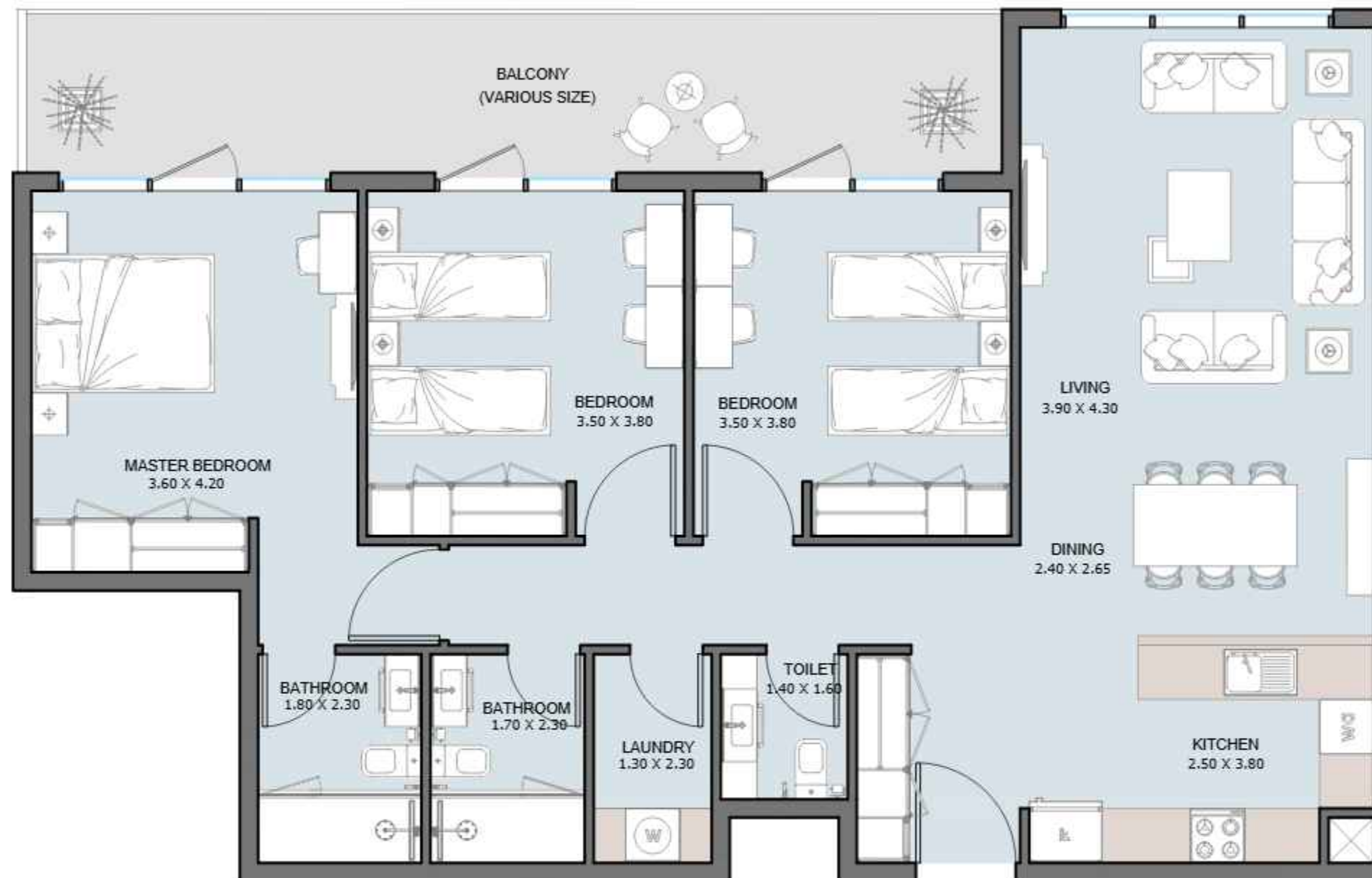
Internal Area	1125.47	sq.ft
Outdoor Area	62.00 to 404.08	sq.ft
Total Area	1187.47 to 1529.55	sq.ft



3B | Type C

TOWER (A,B) - From 21st to 23rd Floor

Internal Area	1253.03	sq.ft
Outdoor Area	209.25	sq.ft
Total Area	1462.28	sq.ft

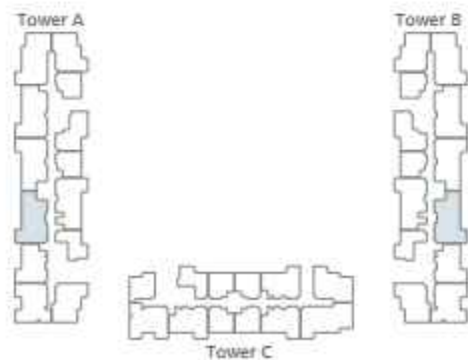
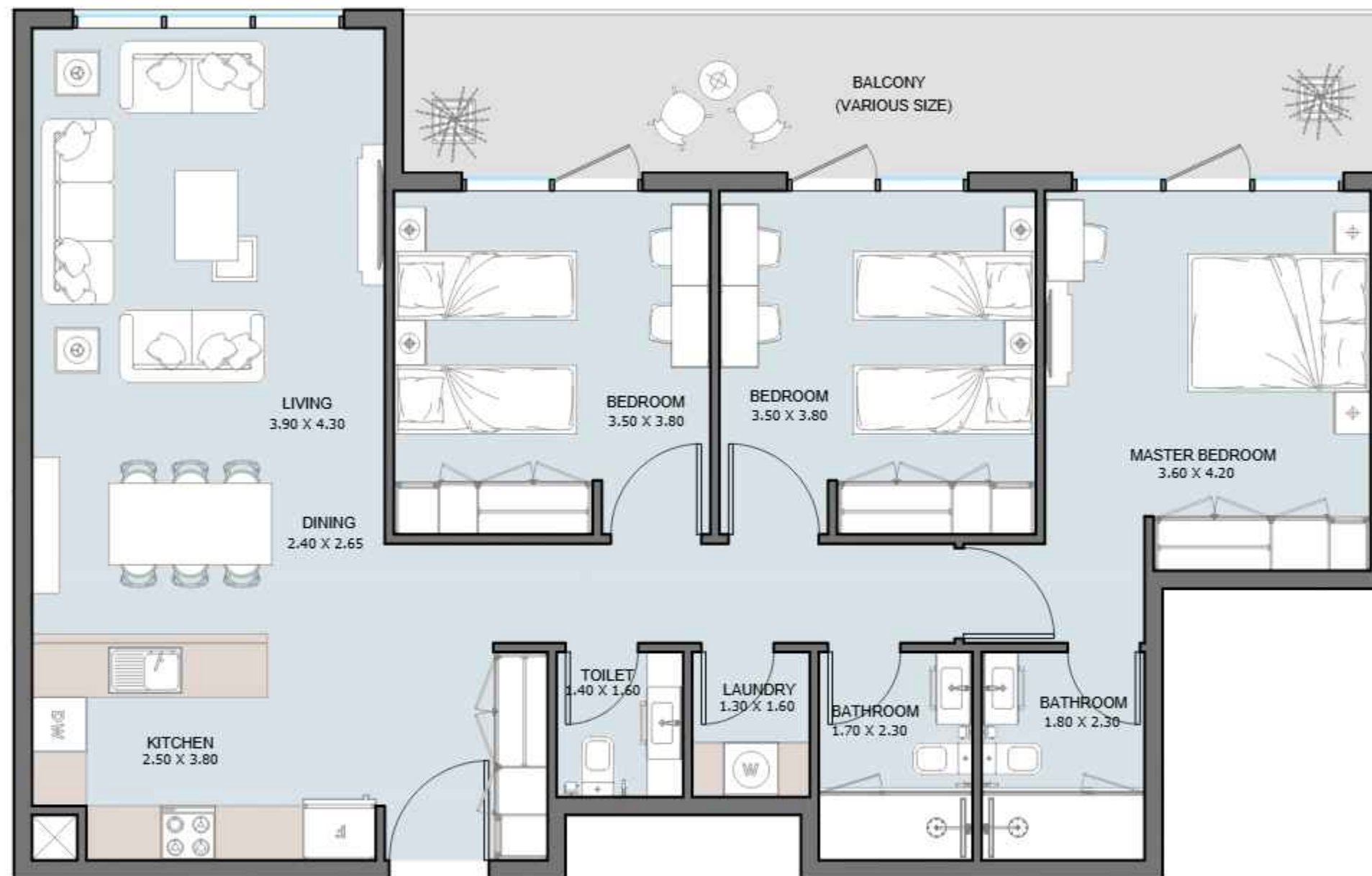


3B | Type D

TOWER (A,B) - 20th Floor

Internal Area	1222.46	sq.ft
Outdoor Area	210.22	sq.ft
Total Area	1432.68	sq.ft

All drawings and dimensions are approximate. Drawings are not to scale and are subject to change without notice. The developer reserves the right to make revisions. The units are measured at typical floors in the building and columns may vary in size depending on the floor level. The furnishing and accessories shown are for representation only. The availability, length and width of the balcony varies depending on which floor and which orientation the unit is located within the building. There will be slight differences in the internal areas between the same unit types depending on the shaft sizes that go through the units.

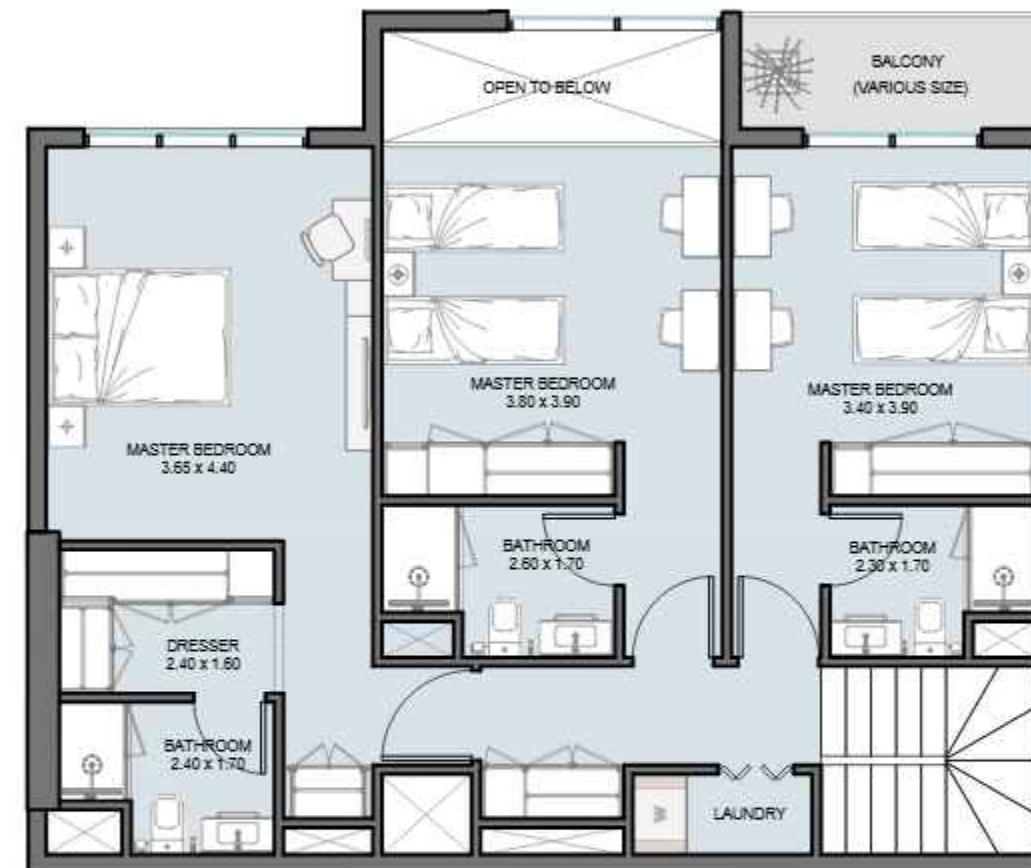


3B | Type E

TOWER (A,B) - 20th Floor

Internal Area	1212.88	sq.ft
Outdoor Area	209.25	sq.ft
Total Area	1422.13	sq.ft

All drawings and dimensions are approximate. Drawings are not to scale and are subject to change without notice. The developer reserves the right to make revisions. The units are measured at typical floors in the building and columns may vary in size depending on the floor level. The furnishing and accessories shown are for representation only. The availability, length and width of the balcony varies depending on which floor and which orientation the unit is located within the building. There will be slight differences in the internal areas between the same unit types depending on the shaft sizes that go through the units.

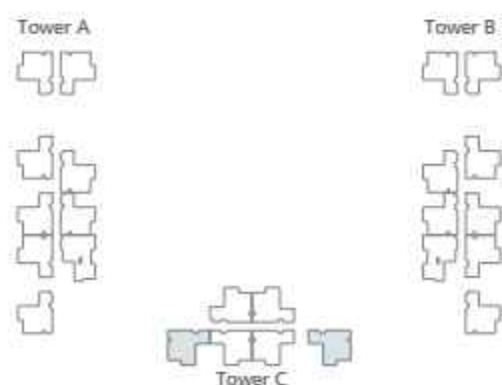
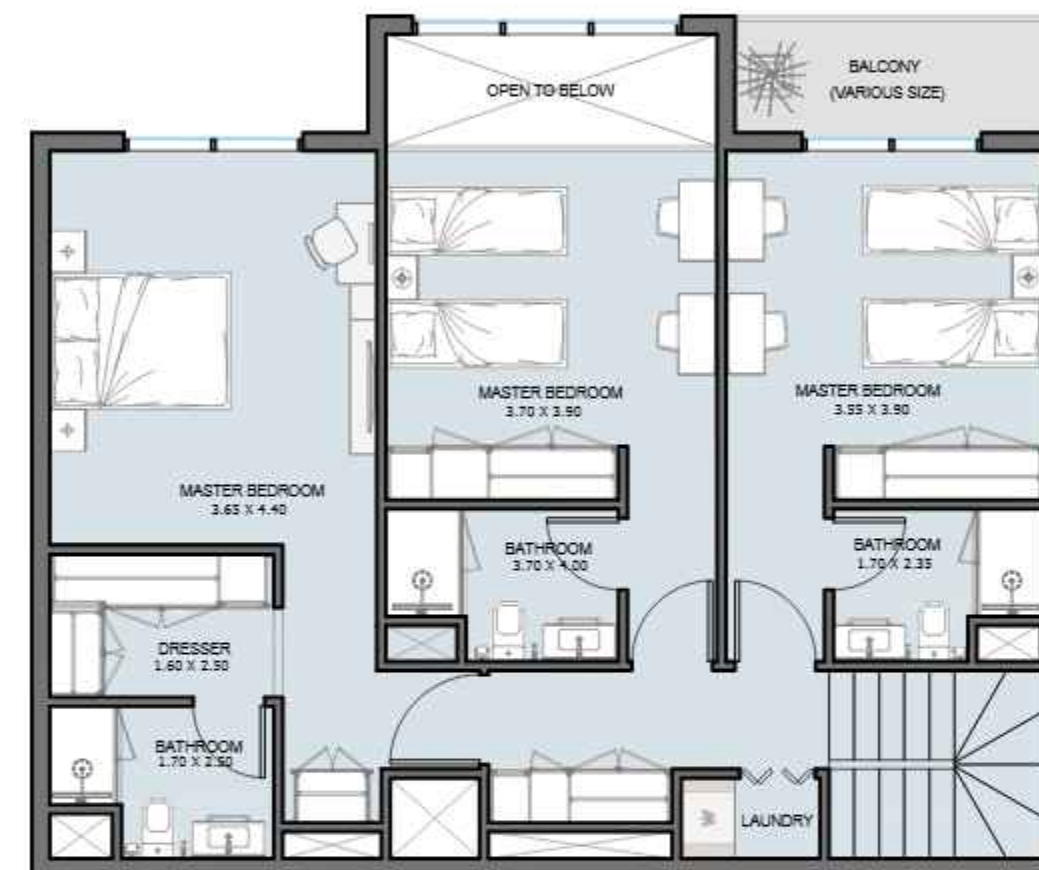
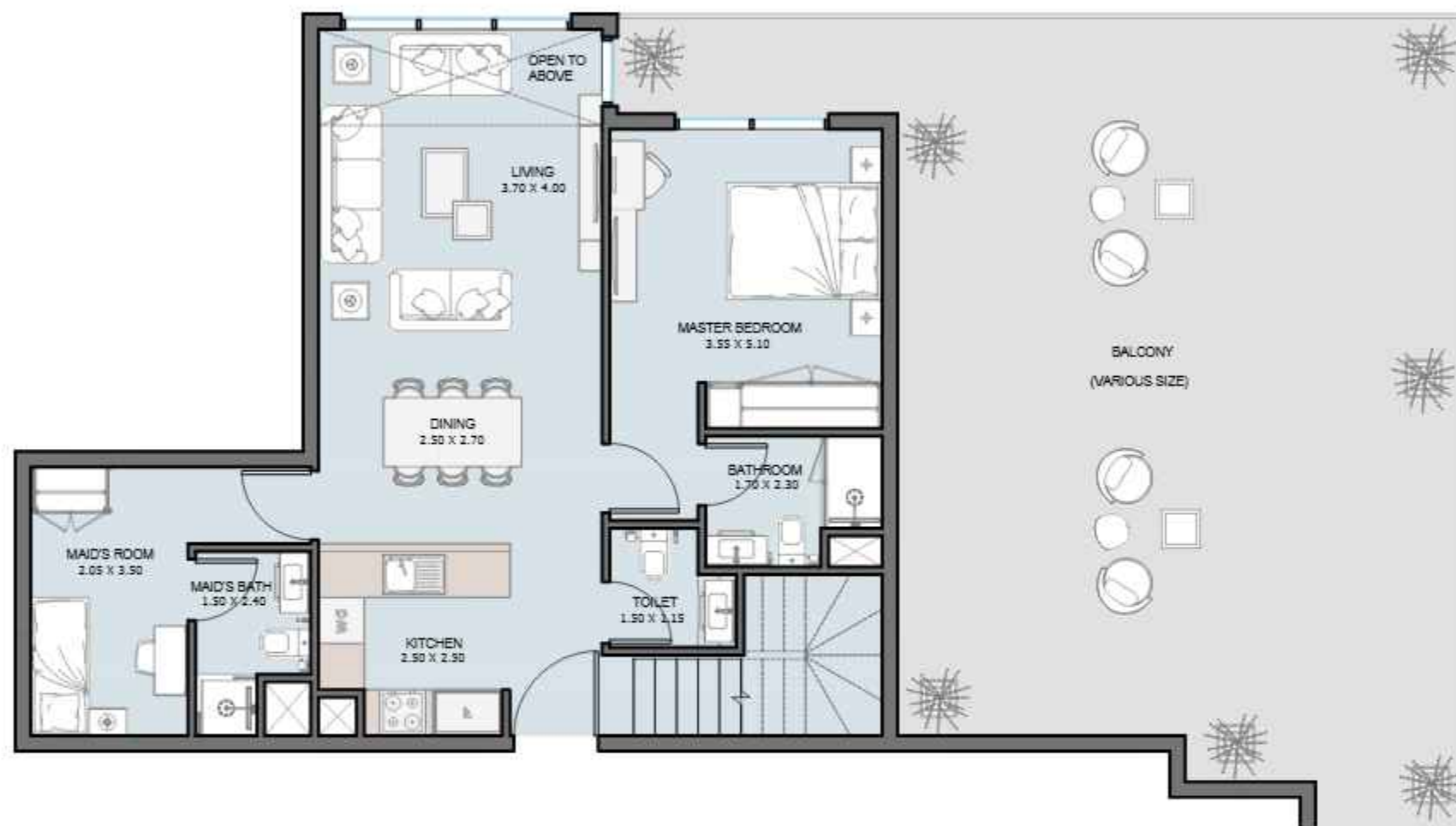


4B Duplex | Type A1

TOWER (C) - 25th Floor

Internal Area	1830.83 sq.ft
Outdoor Area	325.18 sq.ft
Total Area	2156.01 sq.ft

All drawings and dimensions are approximate. Drawings are not to scale and are subject to change without notice. The developer reserves the right to make revisions. The units are measured at typical floors in the building and columns may vary in size depending on the floor level. The furnishing and accessories shown are for representation only. The availability, length and width of the balcony varies depending on which floor and which orientation the unit is located within the building. There will be slight differences in the internal areas between the same unit types depending on the shaft sizes that go through the units.

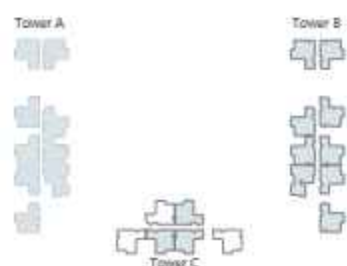
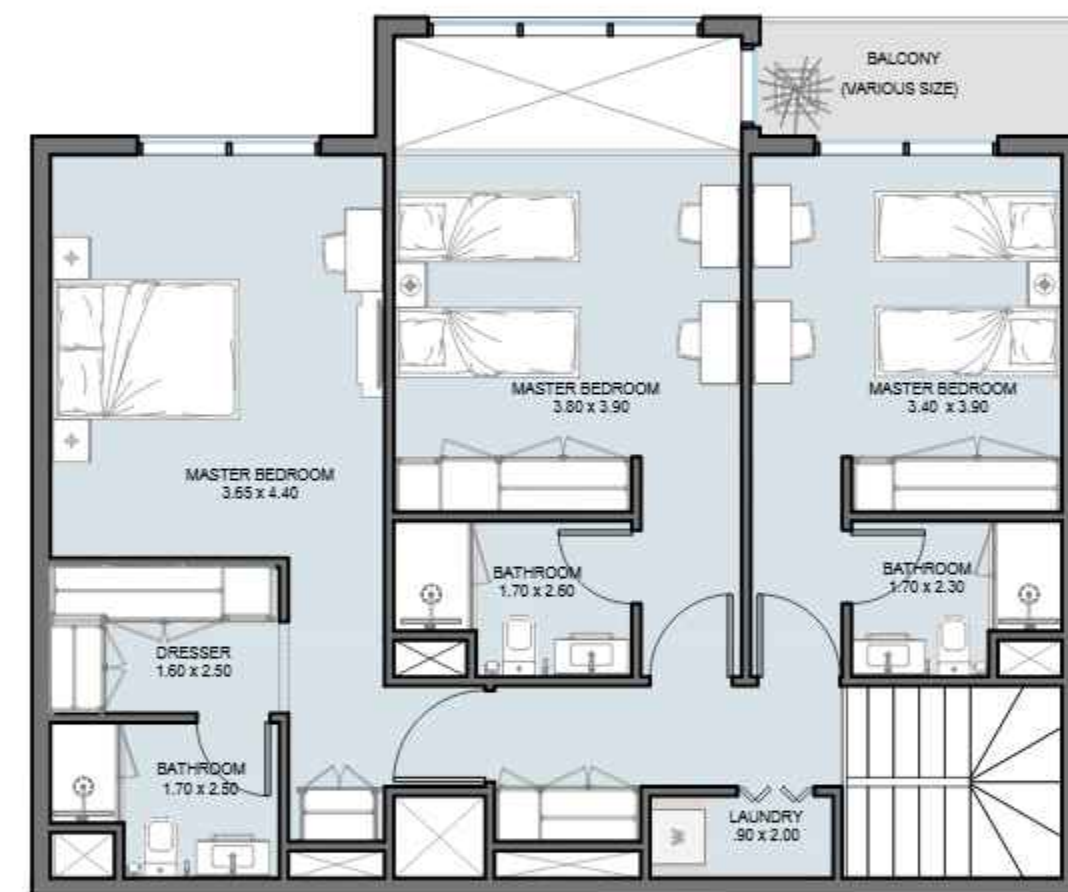


4B Duplex | Type A2

TOWER (C) - 25th Floor

Internal Area	1844.93 to 1847.95 sq.ft
Outdoor Area	920.64 to 1166.91 sq.ft
Total Area	2765.57 to 3014.86 sq.ft

All drawings and dimensions are approximate. Drawings are not to scale and are subject to change without notice. The developer reserves the right to make revisions. The units are measured at typical floors in the building and columns may vary in size depending on the floor level. The furnishing and accessories shown are for representation only. The availability, length and width of the balcony varies depending on which floor and which orientation the unit is located within the building. There will be slight differences in the internal area between the same unit types depending on the shaft sizes that go through the units.

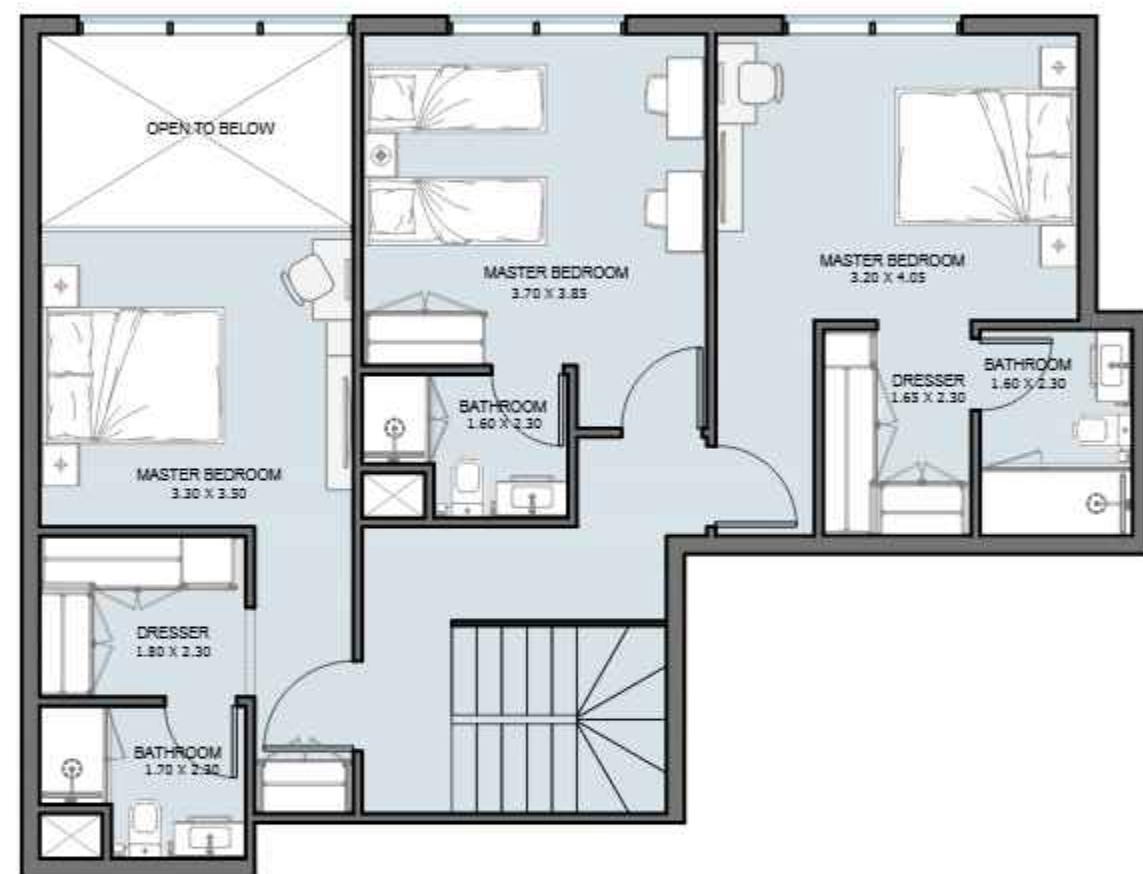
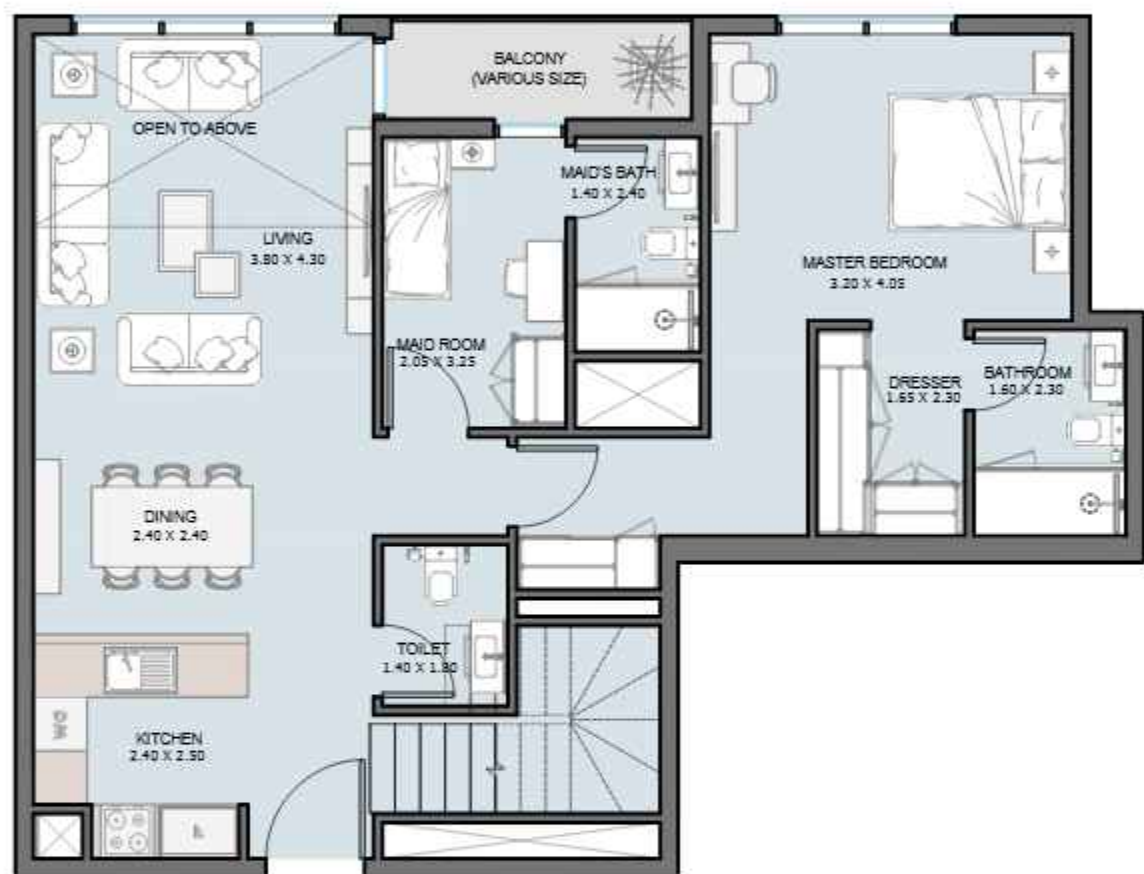


4B Duplex | Type A3

TOWER (A,B,C) - 25th Floor

Internal Area	1830.83 to 1855.80 sq.ft
Outdoor Area	316.03 to 1138.17 sq.ft
Total Area	2146.86 to 2993.98 sq.ft

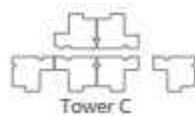
All drawings and dimensions are approximate. Drawings are not to scale and are subject to change without notice. The developer reserves the right to make revisions. The units are measured at typical floors in the building and columns may vary in size depending on the floor level. The furnishing and accessories shown are for representation only. The availability, length and width of the balcony varies depending on which floor and which orientation the unit is located within the building. There will be slight differences in the internal area between the same unit types depending on the shaft sizes that go through the units.



Tower A



Tower B



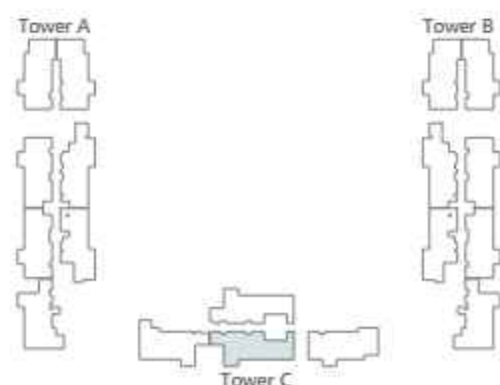
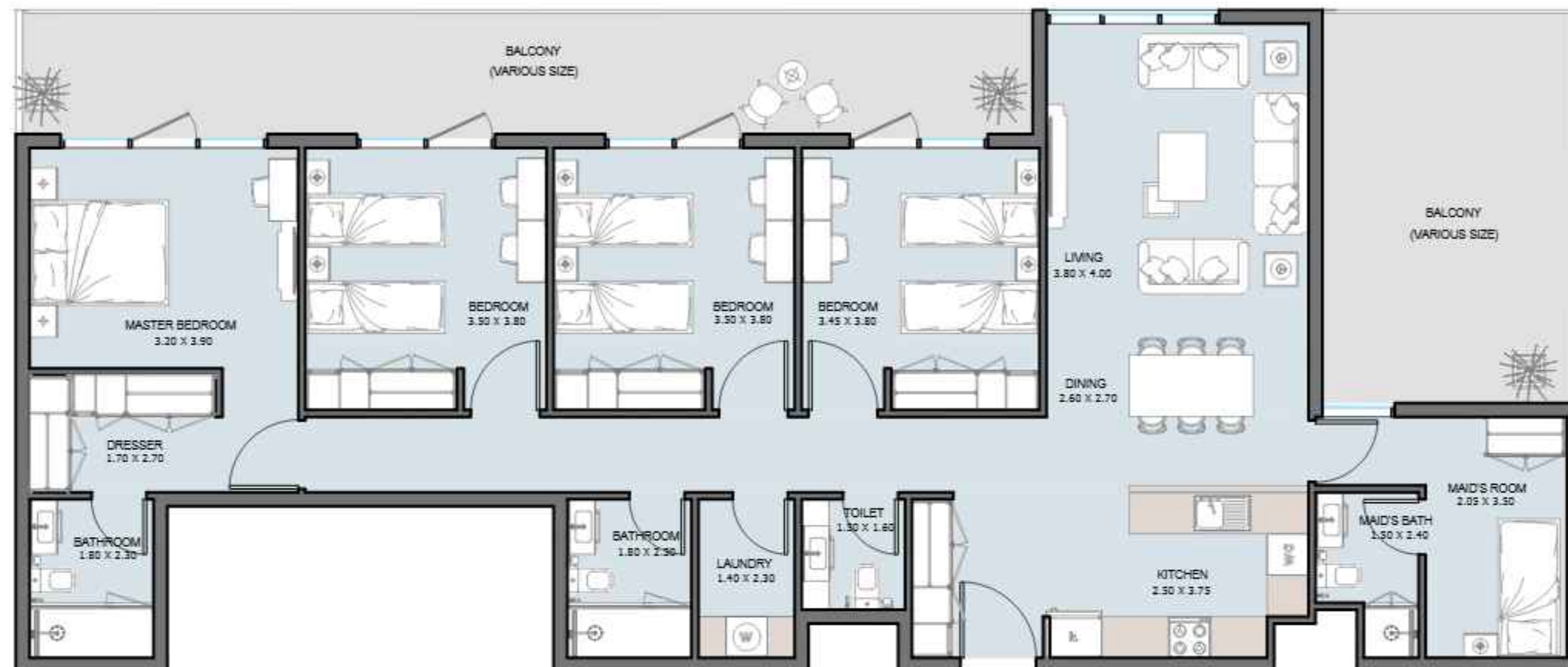
Tower C

4B Duplex | Type B

TOWER (A,B) - 25th Floor

Internal Area	1891.54	sq.ft
Outdoor Area	43.27	sq.ft
Total Area	1934.81	sq.ft

All drawings and dimensions are approximate. Drawings are not to scale and are subject to change without notice. The developer reserves the right to make revisions. The units are measured at typical floors in the building and columns may vary in size depending on the floor level. The furnishing and accessories shown are for representation only. The availability, length and width of the balcony varies depending on which floor and which orientation the unit is located within the building. There will be slight differences in the internal areas between the same unit types depending on the shaft sizes that go through the units.

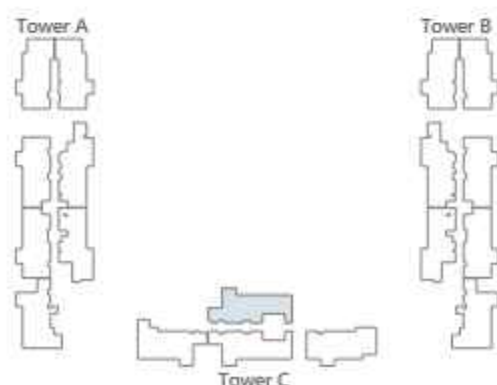
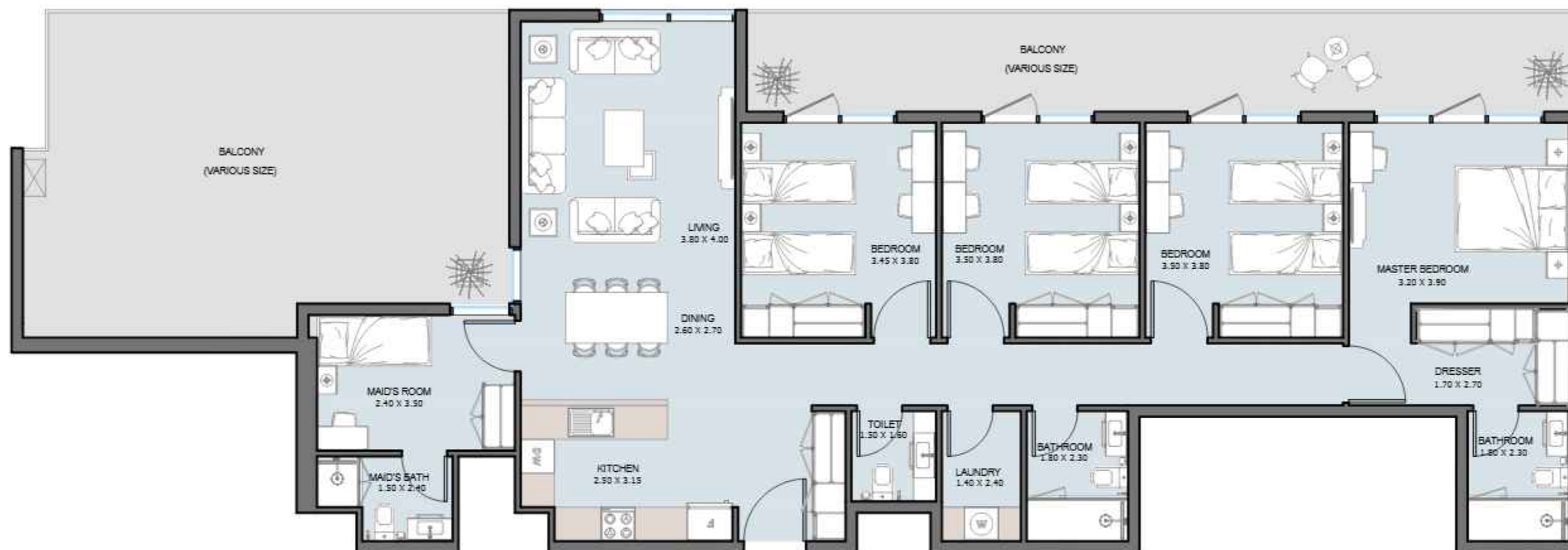


PENTHOUSE 4B | Type A1

TOWER (C) - From 24th to 25th Floor

Internal Area	1621.26 to 1830.83 sq.ft
Outdoor Area	325.18 to 507.73 sq.ft
Total Area	2128.99 to 2156.01 sq.ft

All drawings and dimensions are approximate. Drawings are not to scale and are subject to change without notice. The developer reserves the right to make revisions. The units are measured at typical floors in the building and columns may vary in size depending on the floor level. The furnishing and accessories shown are for representation only. The availability, length and width of the balcony varies depending on which floor and which orientation the unit is located within the building. There will be slight differences in the internal areas between the same unit types depending on the shaft sizes that go through the units.

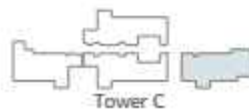


PENTHOUSE 4B | Type A2

TOWER (C) - From 24th to 25th Floor

Internal Area	1630.30 to 1847.95 sq.ft
Outdoor Area	489.11 to 1166.91 sq.ft
Total Area	2119.41 to 3014.86 sq.ft

All drawings and dimensions are approximate. Drawings are not to scale and are subject to change without notice. The developer reserves the right to make revisions. The units are measured at typical floors in the building and columns may vary in size depending on the floor level. The furnishing and accessories shown are for representation only. The availability, length and width of the balcony varies depending on which floor and which orientation the unit is located within the building. There will be slight differences in the internal areas between the same unit types depending on the shaft sizes that go through the units.

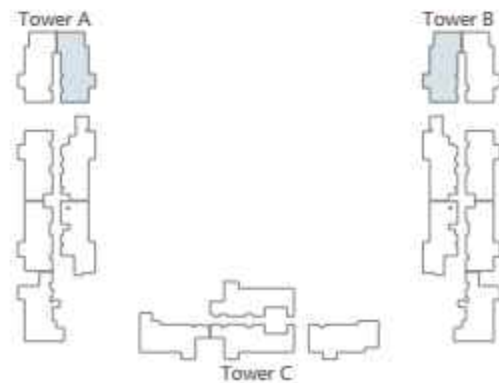
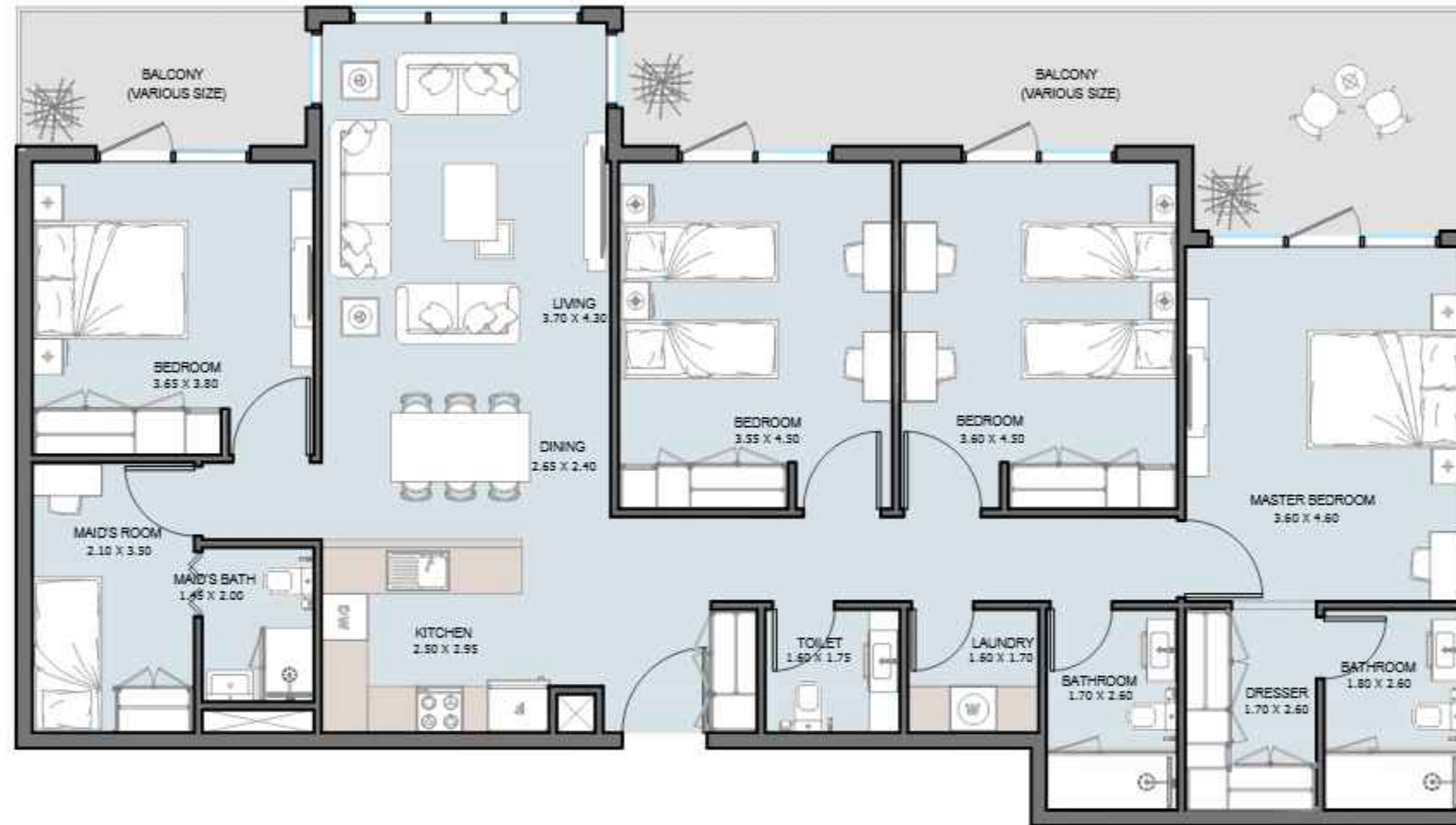


PENTHOUSE 4B | Type B1

TOWER (A,B,C) - 24th Floor

Internal Area	1657.21	sq.ft
Outdoor Area	695.13 to 704.60	sq.ft
Total Area	2352.34 to 2361.81	sq.ft

All drawings and dimensions are approximate. Drawings are not to scale and are subject to change without notice. The developer reserves the right to make revisions. The units are measured at typical floors in the building and columns may vary in size depending on the floor level. The furnishing and accessories shown are for representation only. The availability, length and width of the balcony varies depending on which floor and which orientation the unit is located within the building. There will be slight differences in the internal area between the same unit types depending on the shaft sizes that go through the units.



PENTHOUSE 4B | Type B2

TOWER (A,B) - 24th Floor

Internal Area	1635.36 sq.ft
Outdoor Area	335.51 sq.ft
Total Area	1970.87 sq.ft

All drawings and dimensions are approximate. Drawings are not to scale and are subject to change without notice. The developer reserves the right to make revisions. The units are measured at typical floors in the building and columns may vary in size depending on the floor level. The furnishing and accessories shown are for representation only. The availability, length and width of the balcony varies depending on which floor and which orientation the unit is located within the building. There will be slight differences in the internal area between the same unit types depending on the shaft sizes that go through the units.

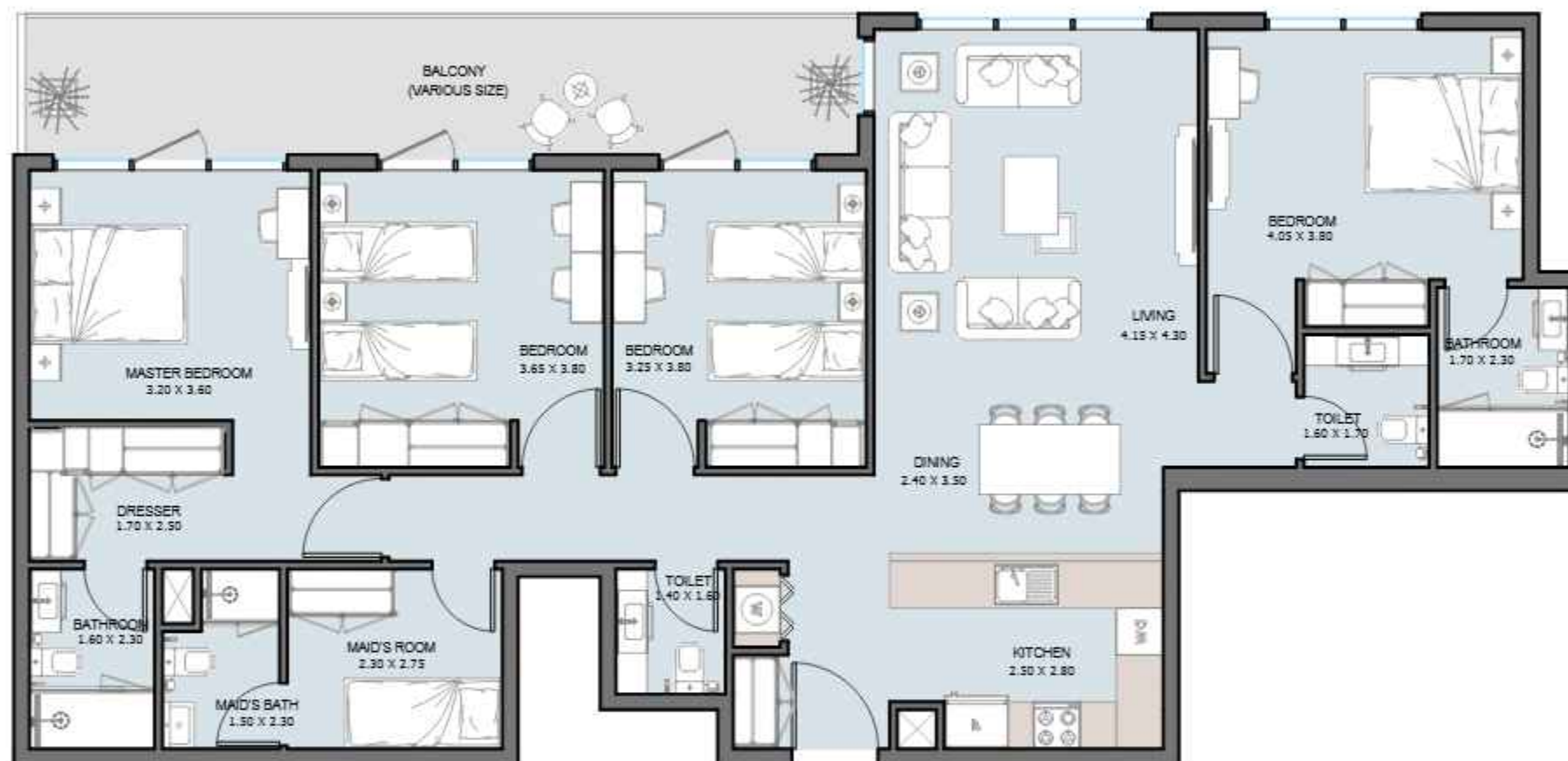


PENTHOUSE 4B | Type C1

TOWER (A,B) - 24th Floor

Internal Area	1670.34	sq.ft
Outdoor Area	286.75	sq.ft
Total Area	1957.09	sq.ft

All drawings and dimensions are approximate. Drawings are not to scale and are subject to change without notice. The developer reserves the right to make revisions. The units are measured at typical floors in the building and columns may vary in size depending on the floor level. The furnishing and accessories shown are for representation only. The availability, length and width of the balcony varies depending on which floor and which orientation the unit is located within the building. There will be slight differences in the internal areas between the same unit types depending on the shaft sizes that go through the units.

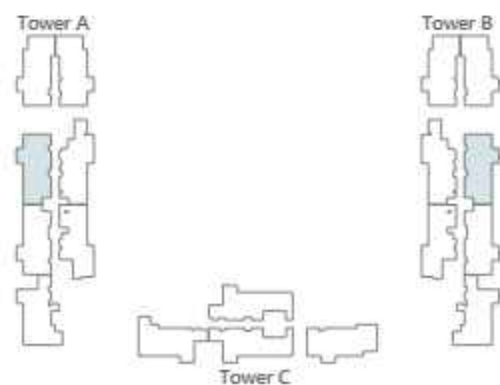
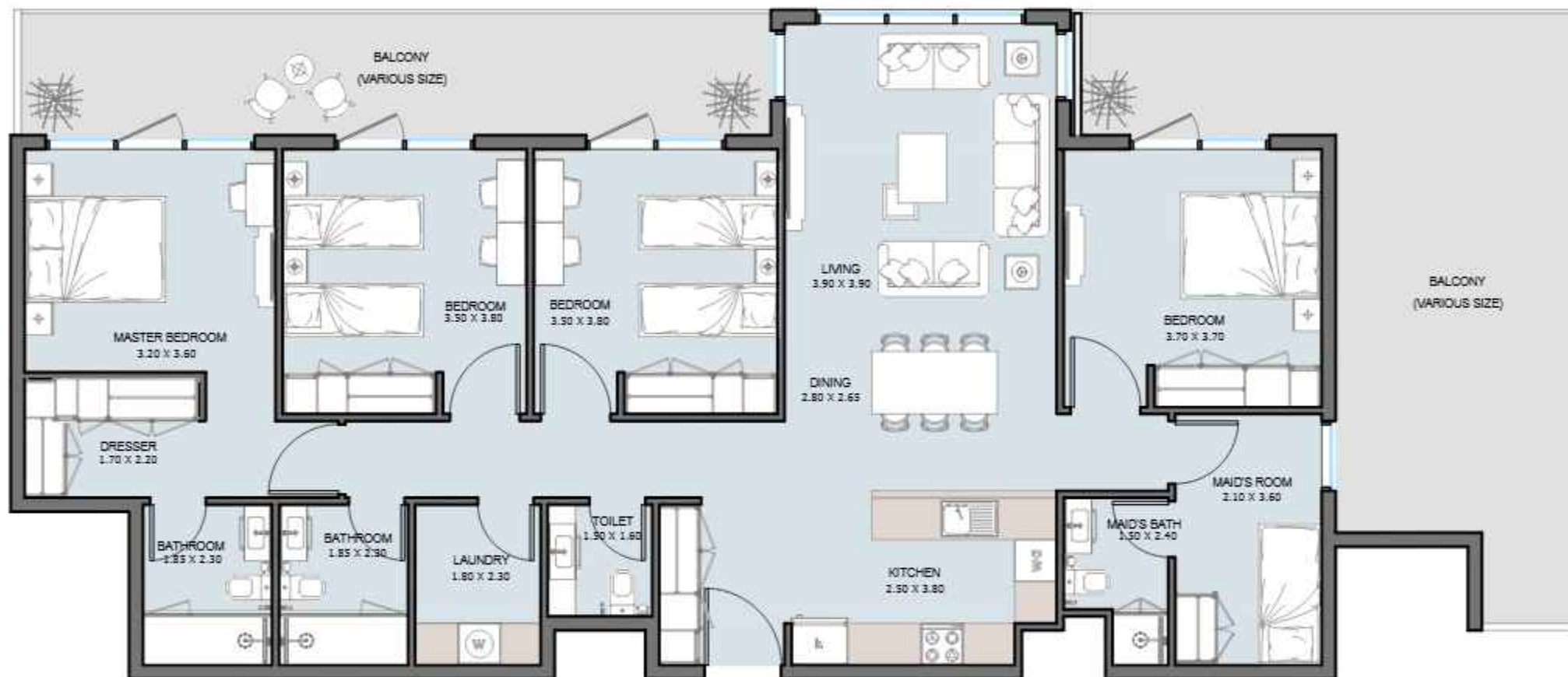


PENTHOUSE 4B | Type C2

TOWER (A,B) - 24th Floor

Internal Area	1553.77	sq.ft
Outdoor Area	209.25	sq.ft
Total Area	1763.02	sq.ft

All drawings and dimensions are approximate. Drawings are not to scale and are subject to change without notice. The developer reserves the right to make revisions. The units are measured at typical floors in the building and columns may vary in size depending on the floor level. The furnishing and accessories shown are for representation only. The availability, length and width of the balcony varies depending on which floor and which orientation the unit is located within the building. There will be slight differences in the internal areas between the same unit types depending on the shaft sizes that go through the units.

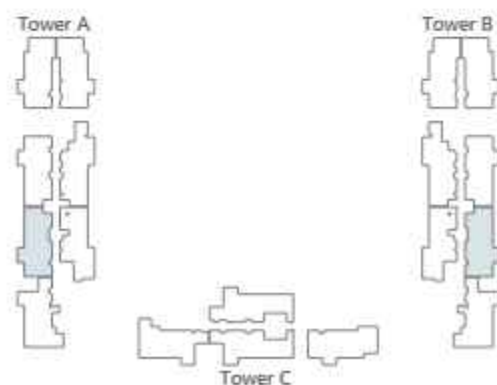
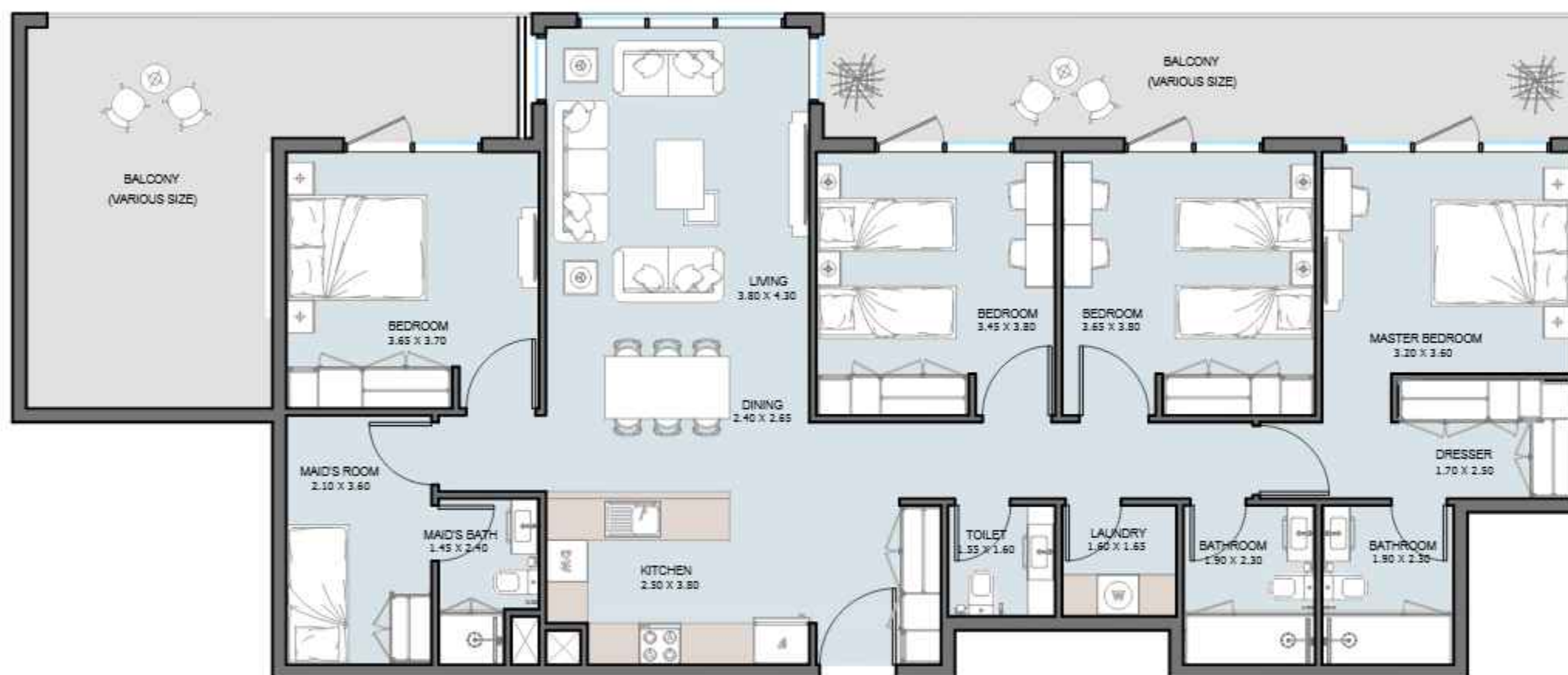


PENTHOUSE 4B | Type D1

TOWER (A,B) - 24th Floor

Internal Area	1581.97	sq.ft
Outdoor Area	598.90	sq.ft
Total Area	2180.87	sq.ft

All drawings and dimensions are approximate. Drawings are not to scale and are subject to change without notice. The developer reserves the right to make revisions. The units are measured at typical floors in the building and columns may vary in size depending on the floor level. The furnishing and accessories shown are for representation only. The availability, length and width of the balcony varies depending on which floor and which orientation the unit is located within the building. There will be slight differences in the internal areas between the same unit types depending on the shaft sizes that go through the units.

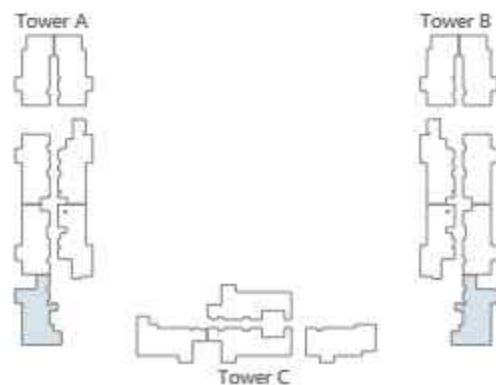
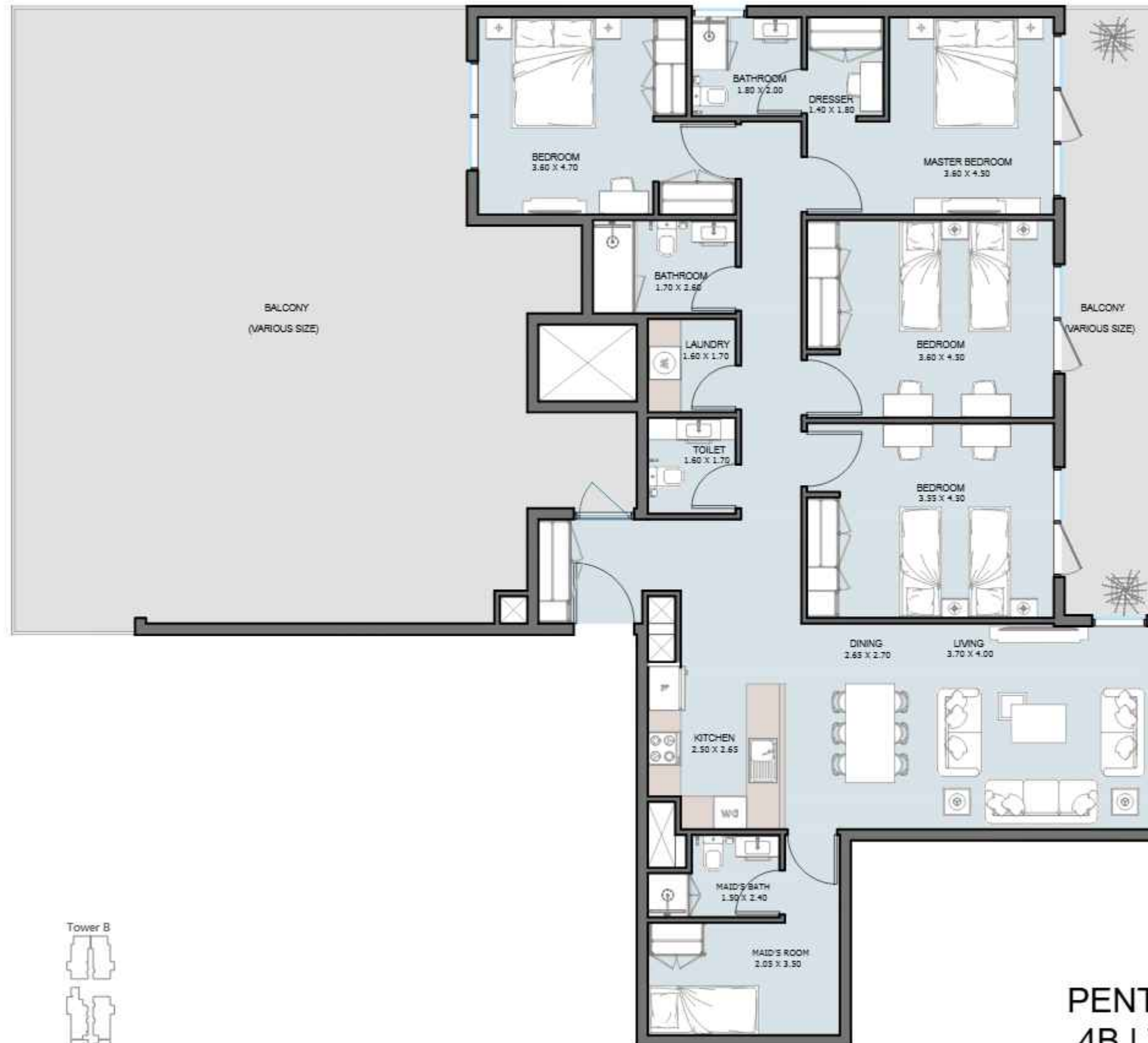


PENTHOUSE 4B | Type D2

TOWER (A,B) - 24th Floor

Internal Area	1564.10	sq.ft
Outdoor Area	509.78	sq.ft
Total Area	2073.88	sq.ft

All drawings and dimensions are approximate. Drawings are not to scale and are subject to change without notice. The developer reserves the right to make revisions. The units are measured at typical floors in the building and columns may vary in size depending on the floor level. The furnishing and accessories shown are for representation only. The availability, length and width of the balcony varies depending on which floor and which orientation the unit is located within the building. There will be slight differences in the internal areas between the same unit types depending on the shaft sizes that go through the units.

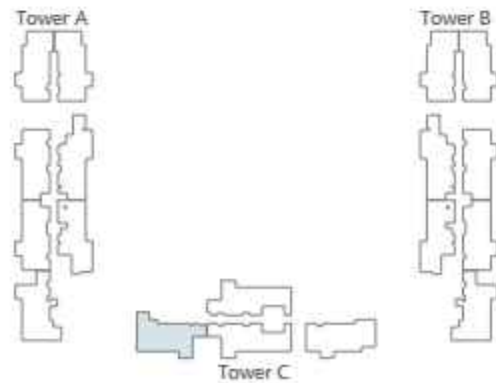
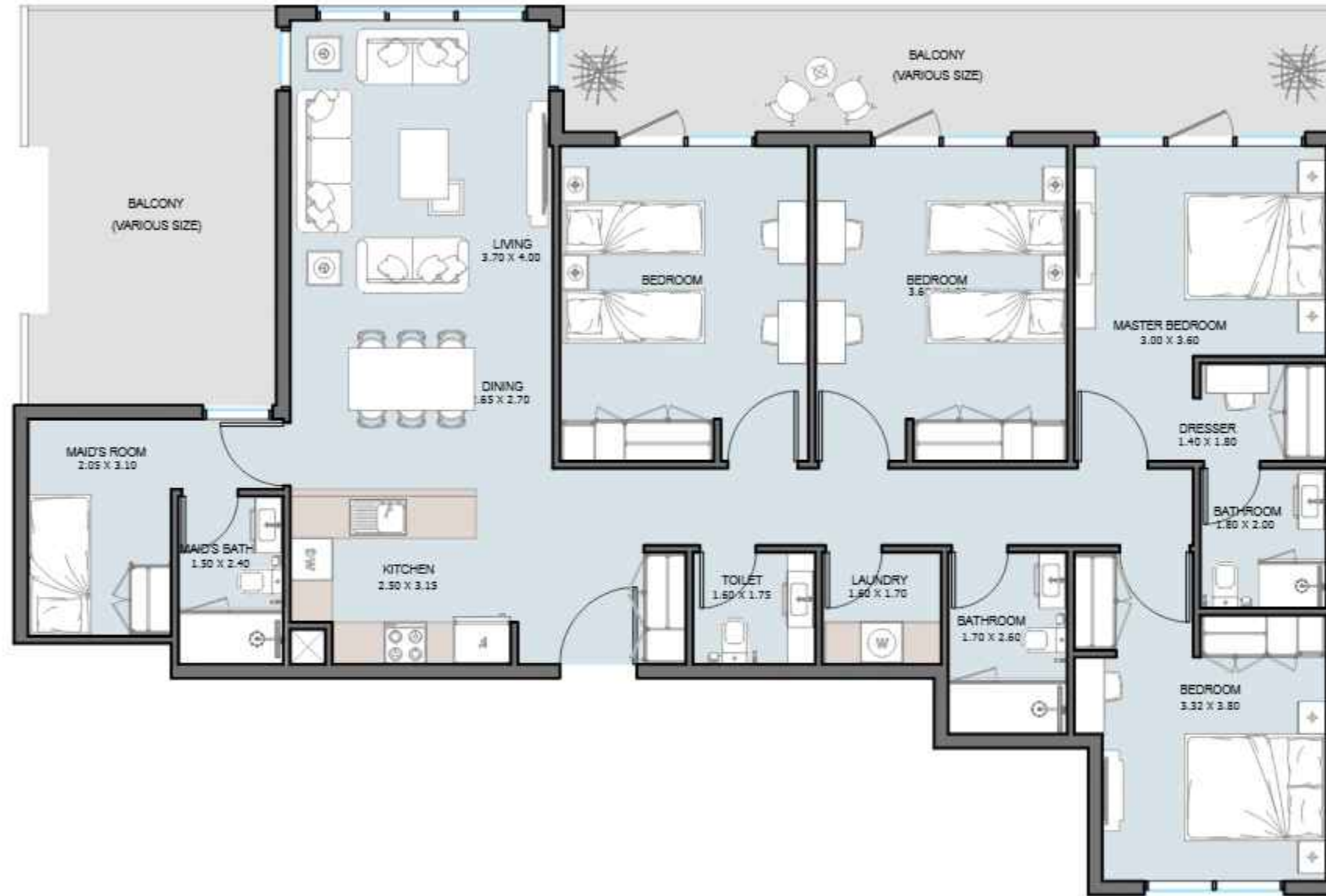


PENTHOUSE 4B | Type E1

TOWER (A,B) - 24th Floor

Internal Area	1667.97 sq.ft
Outdoor Area	1374.77 sq.ft
Total Area	3042.74 sq.ft

All drawings and dimensions are approximate. Drawings are not to scale and are subject to change without notice. The developer reserves the right to make revisions. The units are measured at typical floors in the building and columns may vary in size depending on the floor level. The furnishing and accessories shown are for representation only. The availability, length and width of the balcony varies depending on which floor and which orientation the unit is located within the building. There will be slight differences in the internal area between the same unit types depending on the shaft sizes that go through the units.

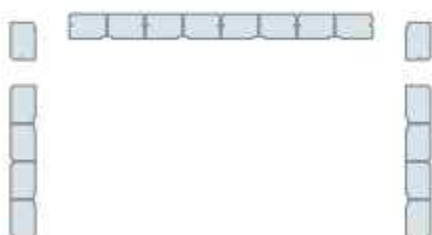
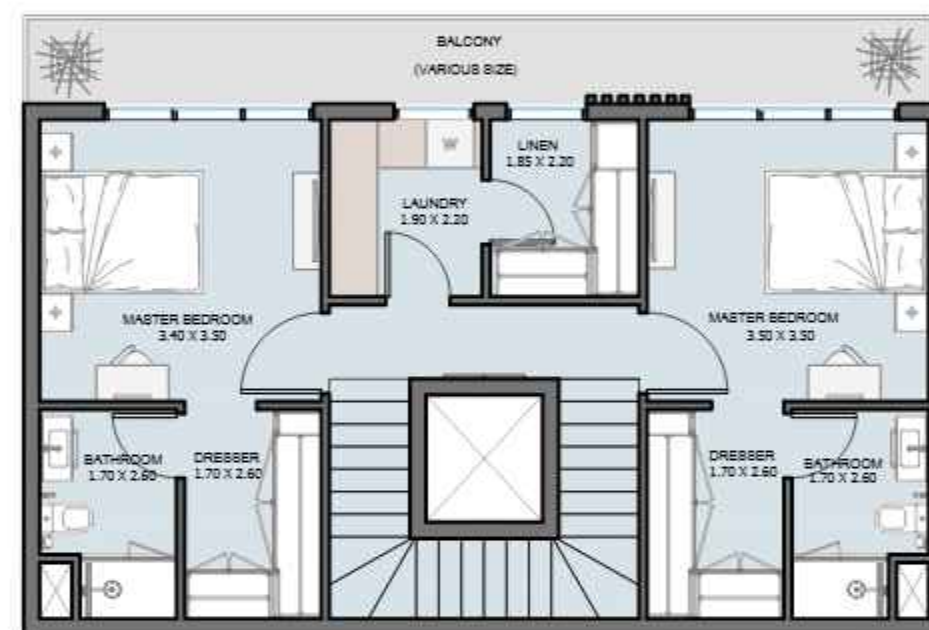
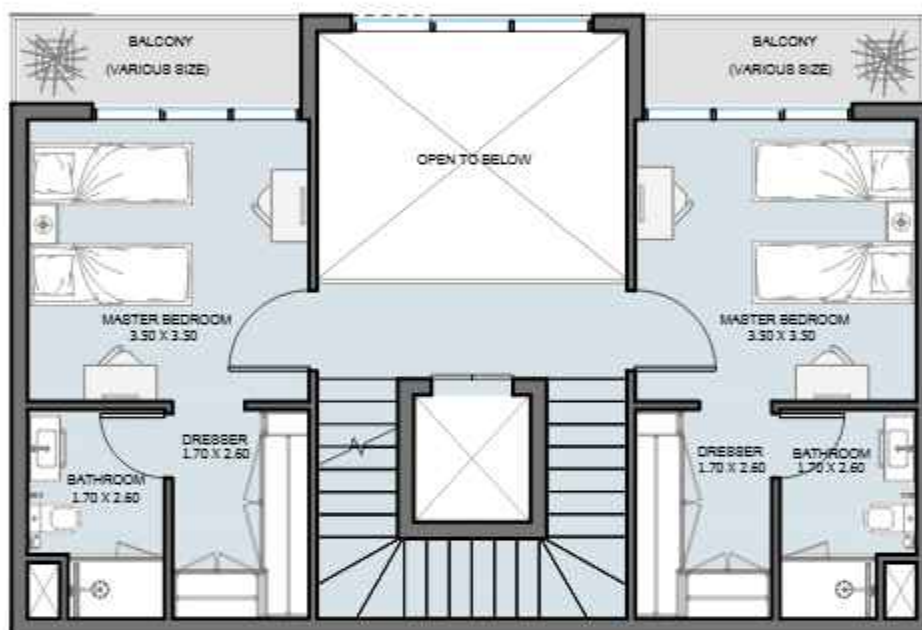


PENTHOUSE 4B | Type E2

TOWER (C) - 24th Floor

Internal Area	1614.15	sq.ft
Outdoor Area	439.06	sq.ft
Total Area	2053.21	sq.ft

All drawings and dimensions are approximate. Drawings are not to scale and are subject to change without notice. The developer reserves the right to make revisions. The units are measured at typical floors in the building and columns may vary in size depending on the floor level. The furnishing and accessories shown are for representation only. The availability, length and width of the balcony varies depending on which floor and which orientation the unit is located within the building. There will be slight differences in the internal area between the same unit types depending on the shaft sizes that go through the units.

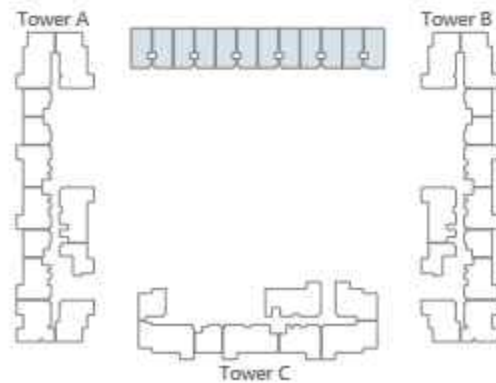
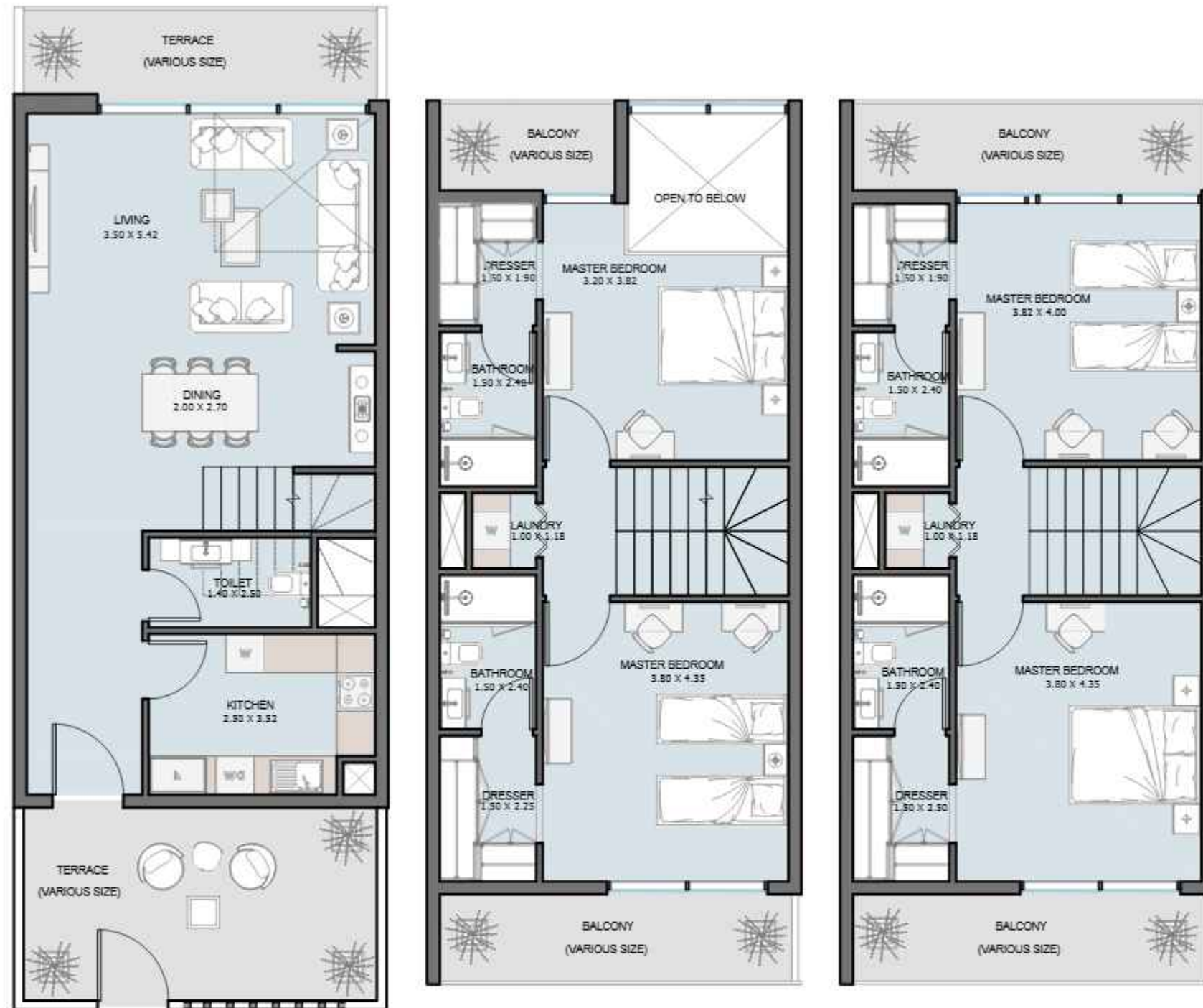


TOWNHOUSE 4B | Type A

Ground Floor

Internal Area	2376.67 to 2415.31 sq.ft
Outdoor Area	522.48 to 935.49 sq.ft
Total Area	2899.15 to 3350.80 sq.ft

All drawings and dimensions are approximate. Drawings are not to scale and are subject to change without notice. The developer reserves the right to make revisions. The units are measured at typical floors in the building and columns may vary in size depending on the floor level. The furnishing and accessories shown are for representation only. The availability, length and width of the balcony varies depending on which floor and which orientation the unit is located within the building. There will be slight differences in the internal areas between the same unit types depending on the shaft sizes that go through the units.



TOWNHOUSE 4B | Type B

TOWER (A) - 4th Floor

Internal Area	1949.02 to 1981.63	sq.ft
Outdoor Area	575.44 to 586.42	sq.ft
Total Area	2524.46 to 2568.05	sq.ft

All drawings and dimensions are approximate. Drawings are not to scale and are subject to change without notice. The developer reserves the right to make revisions. The units are measured at typical floors in the building and columns may vary in size depending on the floor level. The furnishing and accessories shown are for representation only. The availability, length and width of the balcony varies depending on which floor and which orientation the unit is located within the building. There will be slight differences in the internal areas between the same unit types depending on the shaft sizes that go through the units.



housebook Real Estate Company
since 2012 in the UAE

+971 (4) 412-5007

Managers of partnerships



Alevtina Kapustina



Svetlana Guseva

Office

Housebook Real Estate LCC

Dubai Marina, office 2502-01, Dubai, UAE

Company license: 1128098

ae.housebook.deals

partner@housebook.ae

