

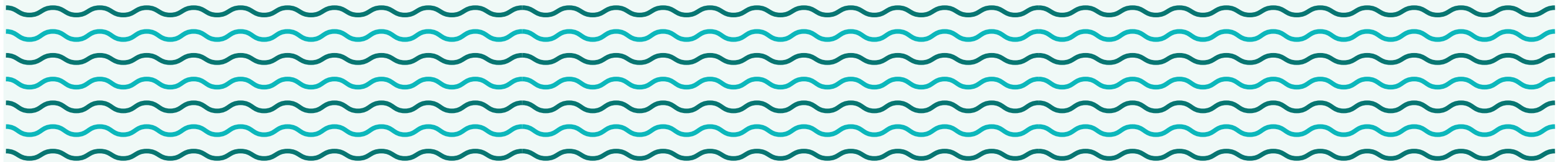
TYPICAL FLOORPLANS

All Apartments / Villas Feature Full Panoramic Marina Views

1, 2 & 3 BEDROOMS

DUPLEXES, TOWNHOUSES & PENTHOUSES

SIGNATURE WATERFRONT VILLAS





LIV
WATERSIDE
DUBAI MARINA

TYPICAL FLOORPLANS

Residential Levels

Levels 02 (1, 2 & 3 BEDROOM UNITS)

- 1 BR - A
- 1 BR - B
- 1 BR - C
- 1 BR - D
- 2 BR - A
- 3 BR - A





LIV
WATERSIDE
DUBAI MARINA

TYPICAL FLOORPLANS

Residential Levels

Levels 03 - 11 (1, 2 & 3 BEDROOM UNITS)

- 1 BR - A
- 1 BR - B
- 1 BR - D
- 2 BR - A
- 2 BR - B
- 3 BR - A





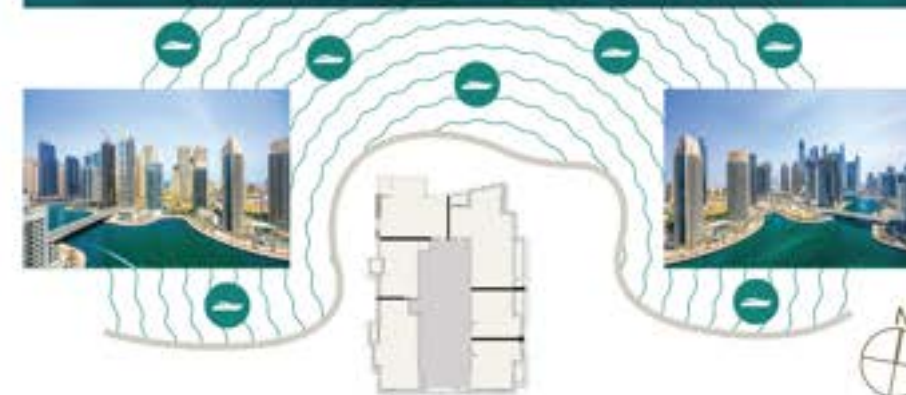
LIV
WATERSIDE
DUBAI MARINA

TYPICAL FLOORPLANS

Residential Levels

Levels 12 - 15 (1, 2 & 3 BEDROOM UNITS)

- 1 BR - A
- 1 BR - B
- 1 BR - D
- 2 BR - A
- 2 BR - C
- 3 BR - A





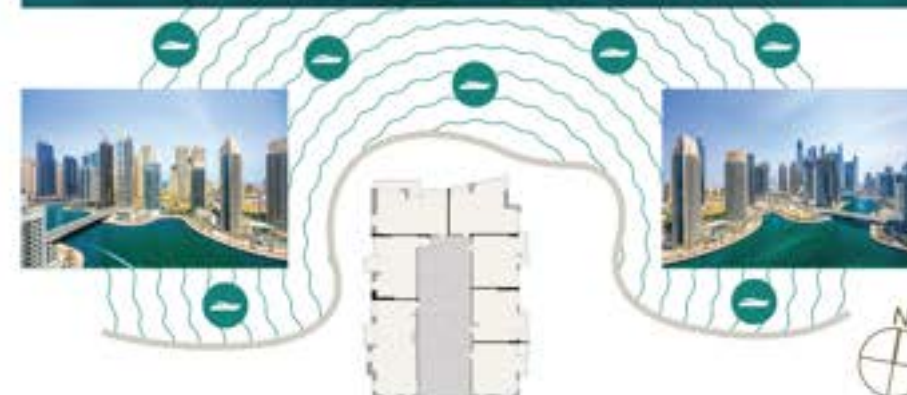
LIV
WATERSIDE
DUBAI MARINA

TYPICAL FLOORPLANS

Residential Levels

Level 17 (1 & 2 BEDROOM UNITS)

- 1 BR - E
- 1 BR - F
- 1 BR - G
- 1 BR - H1
- 1 BR - I
- 1 BR - J
- 2 BR - D





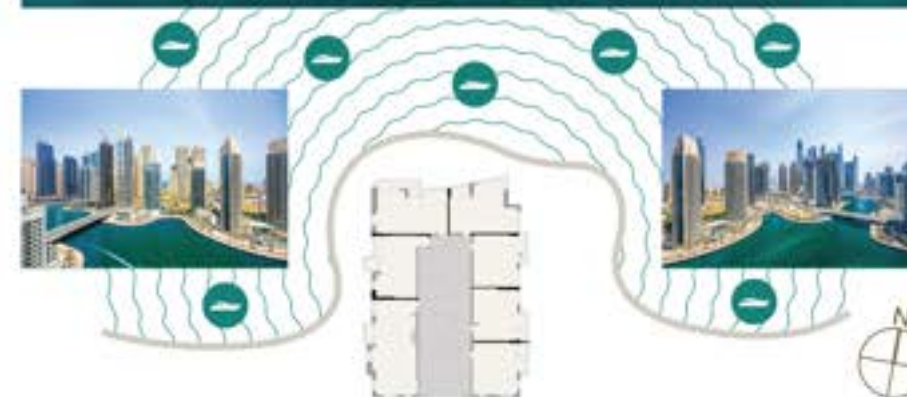
LIV
WATERSIDE
DUBAI MARINA

TYPICAL FLOORPLANS

Residential Levels

Level 18 - 24 (1 & 2 BEDROOM UNITS)

- 1 BR - E
- 1 BR - F
- 1 BR - G
- 1 BR - H2
- 1 BR - I
- 1 BR - J
- 2 BR - D





LOWER FLOOR



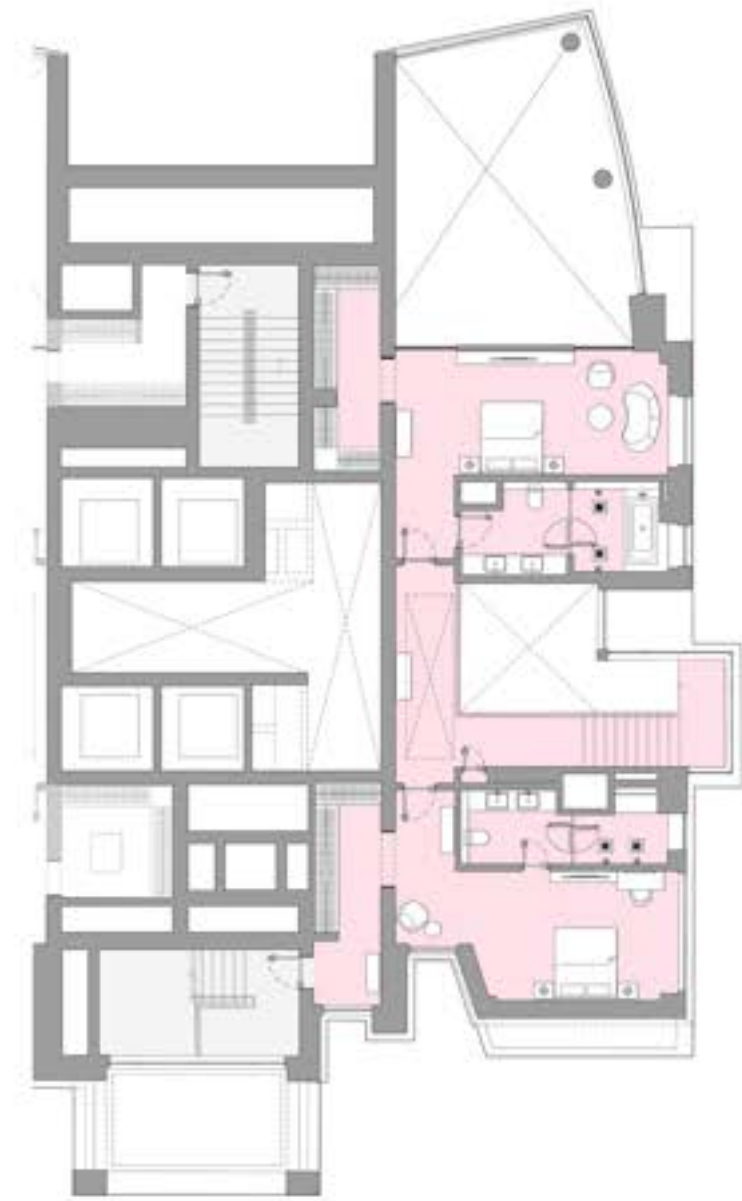
LIV
WATERSIDE
DUBAI MARINA

TYPICAL FLOORPLANS

Penthouse Levels 25 & 26

UNIT 2501

3 BEDROOM DUPLEX PENTHOUSES



UPPER FLOOR



LIV
WATERSIDE
DUBAI MARINA

TYPICAL FLOORPLANS

Penthouse Levels 25 & 26

UNIT 2502

3 BEDROOM DUPLEX PENTHOUSES



LOWER FLOOR



UPPER FLOOR



+971 43 102302

Affiliate
managers



**Alevtina
Kapustina**



**Svetlana
Guseva**

Office

Housebook Real Estate LCC,
Dubai Marina, office 2502-01, Dubai, UAE
Company license: 1128098

ae.housebook.deals

partner@housebook.ae

