

oria

DUBAI CREEK HARBOUR

EMAAR



## DUBAI CREEK HARBOUR



Situated along the historic Dubai Creek and integrating the sustainable urban character of Dubai, Dubai Creek Harbour consists of 7.4 million sqm of residential space and 500,000 sqm of parks & open spaces with a viable mix of retail, business, recreation, and community facilities, all within walking distance.

With endless amenities, and a community filled with fun-loving, like-minded people, there is something for everyone.







PERFECTLY  
CONNECTED

Situated at the intersection of major highways, Oria provides exceptional accessibility. Boasting easy road links, proximity to metro stations, and a water taxi service to Downtown Dubai, every corner of the city is within easy reach.



Access from  
Ras Al Khor Road



Metro  
Stations



Water  
Taxi

Conveniently Located

- |   |                                       |
|---|---------------------------------------|
| 05 mins from Ras al Khor Wildlife Sanctuary | 15 mins from Dubai Int'l Airport      |
| 10 mins from Downtown Dubai                 | 35 mins from Al Maktoum Int'l Airport |





## INTRODUCING **ORIA**

Imagine waking up to the sunrise over Dubai's iconic skyline, where modern design meets natural beauty. Located adjacent to the trendy Creek Beach district, Oria stands as a striking urban landmark, beautifully harmonizing with the calming atmosphere of the waterfront and the lively pulse of Dubai's heart.







## LIVING IN **ORIA**

Oria is nestled in a special district within Dubai Creek Harbour, ideal for those looking for an active way of life.

Explore the scenic waterfront promenade, enjoy play areas and an adventure playground, and go on thrilling adventures at the cycling track and skate park. Sports courts await your competitive spirit, and connections to the RTA ferry terminal and metro station promise seamless mobility.





# BALANCED LIVING

Oria offers a perfect blend of modern city elegance and natural beauty. Residents can explore everything from the tranquil Central Park and scenic Harbour Promenade to the vibrant Marina Boulevard and lush Creekside Park. With the nearby Dubai Metro Station and the charming Creek Harbour Beach, Oria provides an ideal mix of leisure, nature, and easy urban access, all in one place.



## Parkside Tranquillity

At Oria, enjoy the tranquillity of park views amidst the city's vibrancy. These views offer a natural escape right in the urban centre.



## Waterfront Living

Steps from Oria, the creekside promenade offers a sophisticated experience, blending urban energy with coastal charm.



## Park Views with a City Backdrop

Overlooking the district park, residents can enjoy views of the Creek Beach and Dubai's skyline in the distance, offering a picturesque urban-waterfront scene.



## Seamless Metro Access

Oria's prime location provides rapid metro connectivity, making navigating the city effortless and fast.



## Stylish Social Leisure Podium

The podium at Oria is a contemporary social space, ideal for relaxation, socializing, and embracing a vibrant lifestyle.



## Entertainment and Leisure Spaces

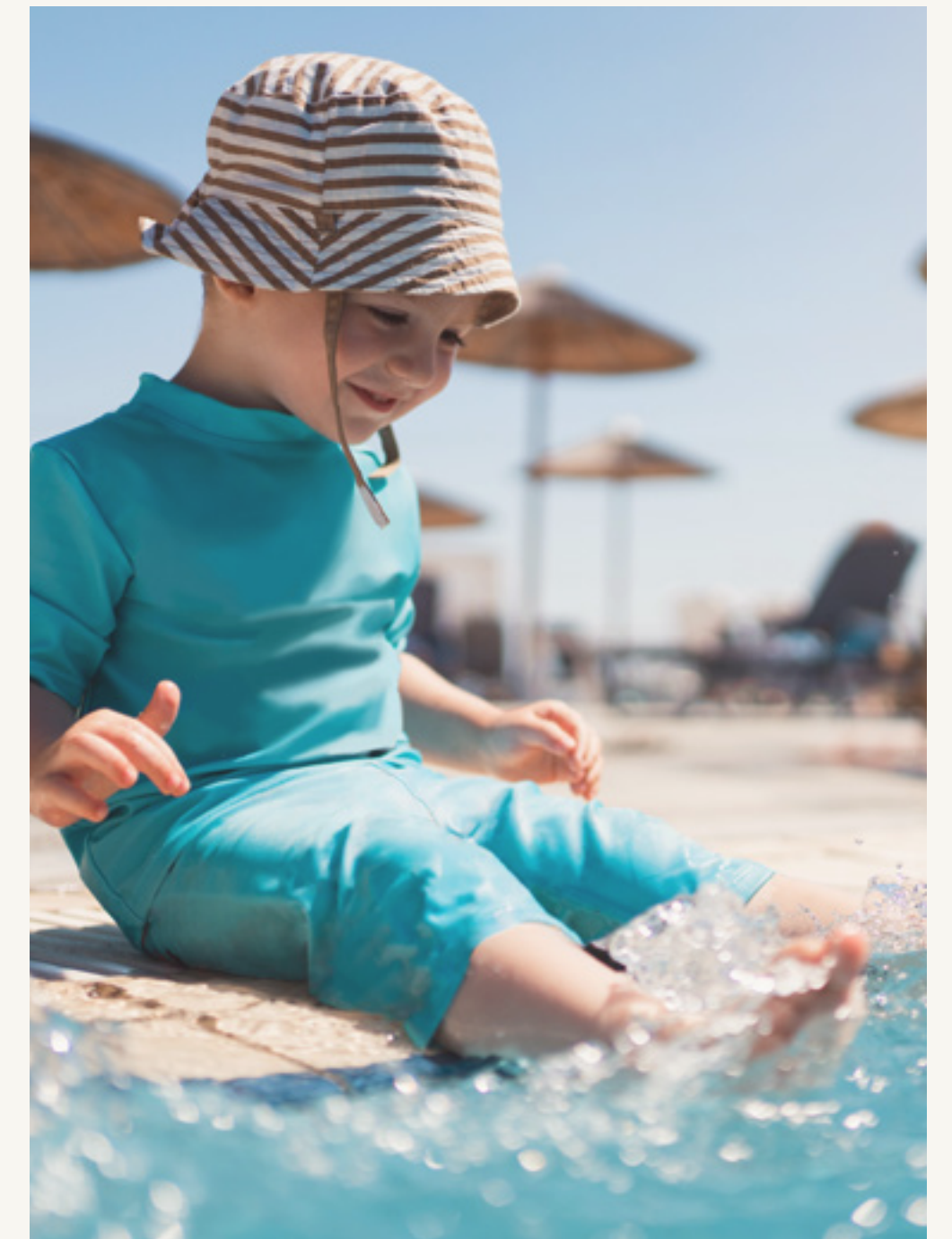
Designed for the modern socialite, Oria's lounges and game rooms offer a blend of entertainment and relaxation.



## EXCLUSIVE AMENITIES TO ELEVATE YOUR EVERYDAY

The centrepiece is a 3600 sqm amenities podium, functioning as a lively community centre. It features a versatile multipurpose room, a state-of-the-art gym, elegant pool areas, and tranquil wellness spaces, all fostering a strong sense of community and enriching the Oria living experience.

- o Flexible Lawn & Kids Play Area
- o Pool Area
- o Indoor & Outdoor Gym
- o Kids' Pool
- o Multipurpose Room
- o BBQ & Picnic Area
- o Yoga Garden
- o Common Garden







## TIMELESS ELEGANCE, **MODERN DESIGN**

Oria's design captures the essence of Dubai's dynamic urban landscape. Using locally sourced materials, the structure showcases a modern, yet authentic architectural style. It's a fresh take on Dubai's architectural narrative, focusing on innovative design elements like shaded balconies and tinted windows, perfectly aligning with the city's contemporary trends and forward-thinking vision.



# EMBRACING SUSTAINABILITY

From innovative shading elements to energy-efficient systems, each feature at Oria reflects a dedication to a greener, more sustainable future.

01



## Sunlight Smart Design

Oria’s architecture artfully integrate balconies, shaded ledges, and tinted windows, reducing indoor sunlight glare and heat.

02



## Verdant Living

The project blends with existing greenery, enhancing sustainability and wellbeing through natural cooling and energy reduction.

03



## Waste-Wise

Innovative double refuse chutes and recycling bins in Oria encourage efficient waste segregation and sustainable management.

04



## Insulated Comfort

Insulated roofs and double-glazed windows in Oria ensure energy efficiency, keeping interiors comfortable.



05



## Water Wisdom

We repurpose condensate water for landscape irrigation, emphasizing water conservation and eco-friendly practices.

06



## Efficient Lighting

Smart lighting control systems and LED fixtures in common areas cut down energy use while improving lighting quality.

07



## Energy-Smart Air Systems

Oria uses advanced air handling units with energy recovery features, optimizing air conditioning while saving energy.

08



## Eco-Friendly Transit

The inclusion of electric vehicle charging stations and ample bike parking aligns with Oria's sustainable, low-emission transport vision.





# CREEK ISLAND

The Island District is a waterfront development that mixes upscale residences with enticing leisure and recreational amenities to create a world-class waterfront community. The district's green central park, stunning marina, yacht club, and five-star hotels will all be popular destinations for residents to enjoy the district's breath-taking views and memorable experiences.



Breath-taking  
Sunset Views



Licensed Bars &  
Restaurants



5 Min from Creek  
Marina Yacht Club



Vida  
Creek Harbour




# CREEK MARINA


With a wide variety of retail, dining, and recreational options, Creek Marina never slows down. Landscaped pedestrian walkways offer stunning views of Downtown Dubai at dusk, while world-class art pieces add another layer to the trendsetting lifestyle.

  
Food Trucks

  
Vida Creek Harbour

  
Yacht Club Marina with 81 Berths

  
Address Hotel

  
Art Installations

  
Sculptural Viewing Deck







# CENTRAL PARK

The heart of island living, Dubai Creek Harbour's Central Park offers residents a tranquil refuge to unwind, first-class amenities to enjoy, and wide-open spaces to discover. With a total area of six football fields, Dubai's Central Park is one of the largest parks in the emirate and offers a variety of activities for the whole family.



Kids'  
Play Area



Skating  
Areas



Dog  
Park



Splash Pad  
Fitness Plaza



Lawn  
Amphitheatre





EMAAR

GLOBAL LIFESTYLE  
DEVELOPER

As one of the most valuable and reputable real estate developers in the world, Emaar aims to provide world-class design and unrivalled products in the most desirable locations.

The Group's portfolio consists of large-scale integrated residential developments, shopping malls, hotels, entertainment, and leisure destinations. Some of Emaar's most iconic landmarks include Burj Khalifa, the world's tallest building.

Under Development

27,000+  
Residential Units

Revenue AED

24.9 BN  
FY 2022

Net Profit AED

6.8 BN  
FY 2022

Delivered

85,000+  
Residential Units

Presence in

12+  
Global Markets

Market Cap AED

51.8 BN  
FY 2022

\*As in 31 December 2022



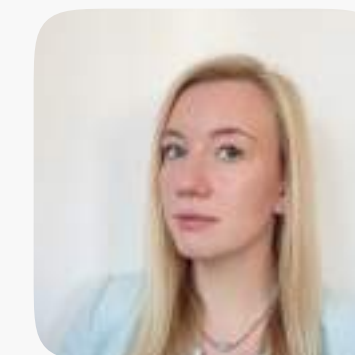


**+971 (4) 412-5000**

Affiliate  
managers



**Alevtina  
Kapustina**



**Svetlana  
Guseva**

## Office

Housebook Real Estate LCC,  
**Dubai Marina, office 2502-01, Dubai, UAE**  
Company license: 1128098

[ae.housebook.deals](https://ae.housebook.deals)

[partner@housebook.ae](mailto:partner@housebook.ae)

