



CURATED BY
LONDON GATE

ABOUT DEVELOPER

Founded in 2006 by Mr. Ghaleb Al Sarraj, Al Serh Al Kabeer Construction Company L.L.C. is a trusted leader in construction and property development across the UAE and Saudi Arabia. With expertise spanning residential, commercial, and specialized projects, the company is driven by a commitment to excellence and innovation, backed by a highly qualified team with global and local experience.



ASAK REAL ESTATE
DEVELOPMENT L.L.C



ABOUT ASAK 11

This modern development offers a total of 105 units, including studios, one-bedroom apartments, two-bedroom apartments, and retail spaces. The design features sleek lines, expansive glass windows, and lush greenery, creating a visually appealing and eco-friendly environment. Each unit is spacious, with large balconies and high-end finishes, while ample parking ensures convenience for both residents and visitors.



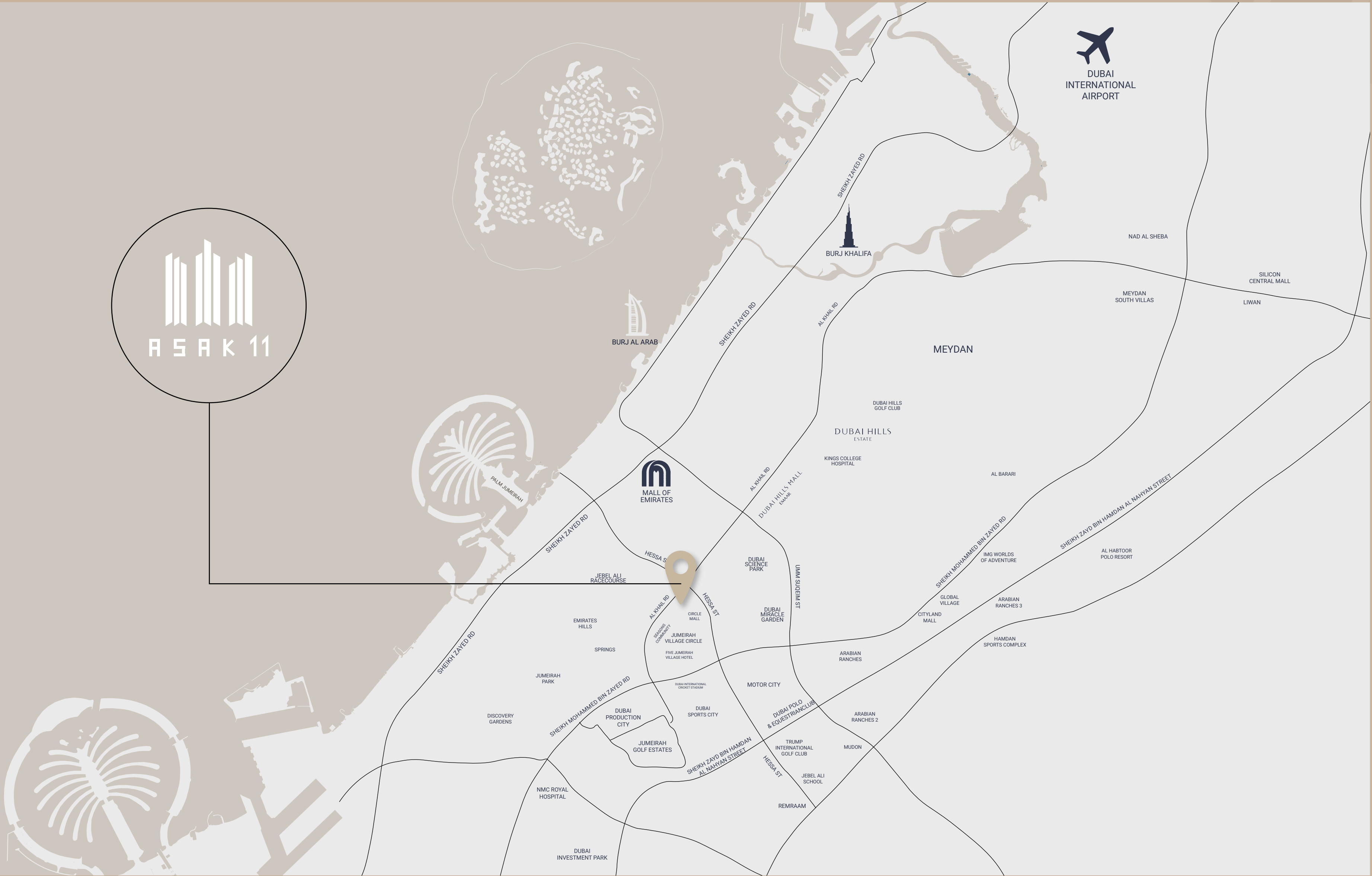
ABOUT JUMEIRAH VILLAGE CIRCLE

Jumeirah Village Circle (JVC) in the heart of new Dubai offers a prime location with great connectivity to various parts of the emirate, making it a sought-after destination for both renters and buyers looking for affordable apartments and villas. Its popularity among investors is further boosted by its freehold status, competitive prices, and attractive rental yields.

Nakheel, the master developer behind JVC, has crafted a community known for its tranquil ambiance, complemented by lush gardens, parks, and a range of amenities. This blend of serene surroundings and modern conveniences makes JVC an attractive option for those seeking a balanced lifestyle in Dubai.

THE LOCATION

- 02 Minutes**
JSS International School
- 05 Minutes**
Circle Mall
- 07 Minutes**
Aster Clinic
- 10 Minutes**
Dubai Miracle Garden
- 12 Minutes**
City Centre Me'aisem
- 15 Minutes**
Dubai Hills Mall
- 16 Minutes**
Dubai Autodrome
- 18 Minutes**
Global Village
- 20 Minutes**
IMG Worlds of Adventure
- 30 Minutes**
Jumeirah Beach
- 35 Minutes**
Dubai International Airport







PLOT LOCATION

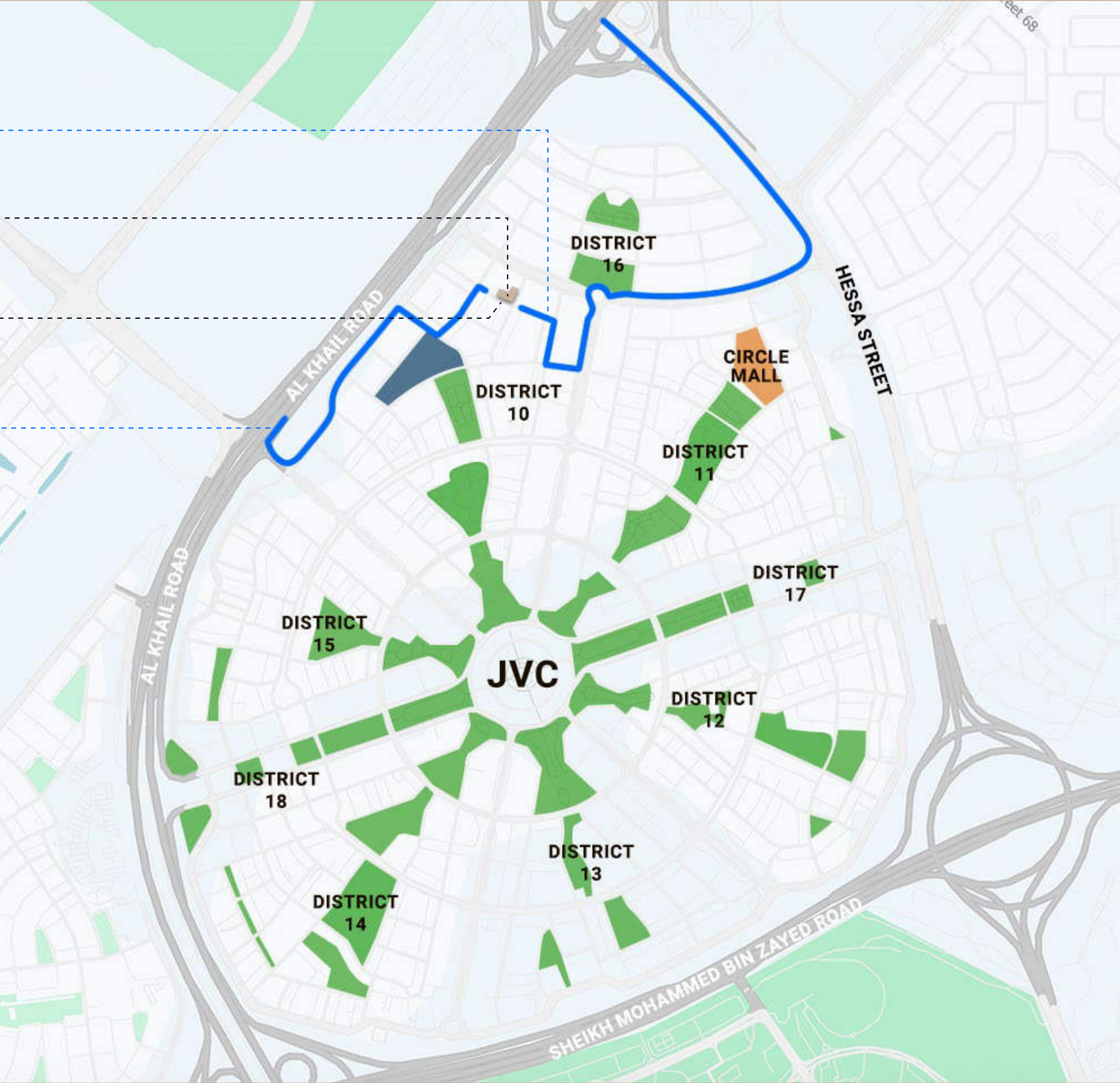


EXIT FROM JVC

BUILDING ENTRY

ENTRY TO JVC

-  PARKS
-  CIRCLE MALL
-  ROAD ACCESS
-  JSS INTERNATIONAL SCHOOL







LIVING ROOM



KITCHEN



BEDROOM



BATHROOM



PODIUM LOUNGE & LANDSCAPING AREA



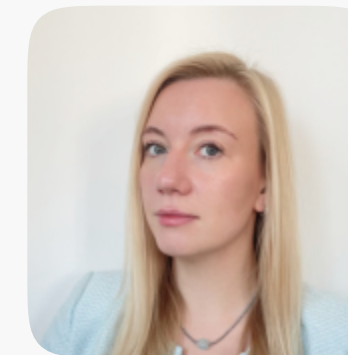


+971 (4) 412-5000

Affiliate
managers



**Alevtina
Kapustina**



**Svetlana
Guseva**

Office

Housebook Real Estate LCC

Dubai Marina, office 2502-01, Dubai, UAE

Company license: 1128098

ae.housebook.deals

partner@housebook.ae

