

THE CHEDI

PRIVATE RESIDENCES

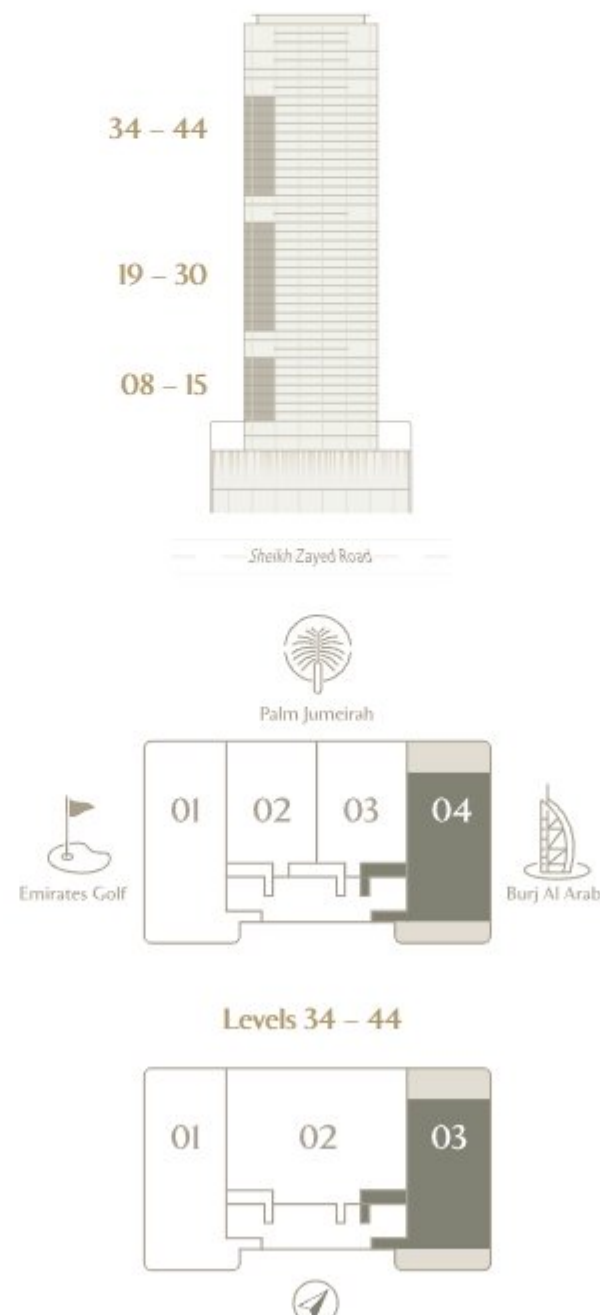
SHEIKH ZAYED ROAD, DUBAI, UAE

SERENITY VILLAS

3 BEDROOM EAST

3 BEDS | 4 BATHS & POWDER ROOM | MAID'S ROOM
PRIVATE LOBBY | BURJ AL ARAB & PALM JUMEIRAH VIEWS

	sqm	sqft
Suite Area	410.70	4,420.74
Terrace Area	11789	1,268.96
Total Area	528.59	5,689.70



Disclaimer: Any images and visualizations contained herein are provided for illustrative and marketing purposes only. All information contained herein is subject to change without notice and without liability and only the information contained in the final Sales and Purchase Agreement entered into between the Developer and Buyer will have any legal effect. All drawings and dimensions are approximate. Drawings are not to scale and subject to change without notice. The Developer reserves the right to make revisions. The units are taken from the typical floor of a building and dimensions of the units, balcony and the size of columns may vary depending on the floor level and orientation of the unit within the building to comply with the building authority regulations. E&OE



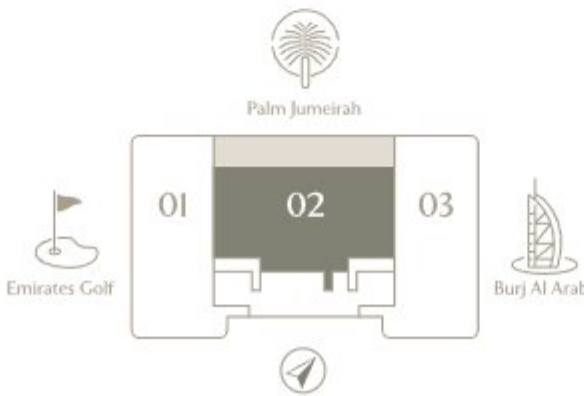
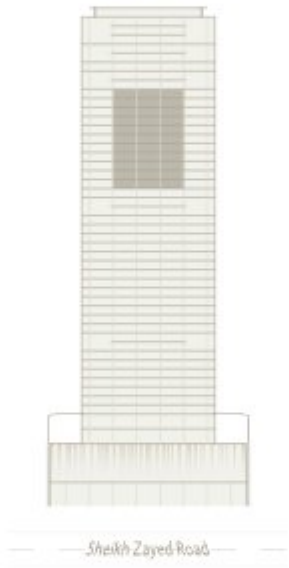
HORIZON VILLAS

4 BEDROOM

4 BEDS | 6 BATHS & POWDER ROOM | MAID'S & DRIVER'S ROOM
PRIVATE LOBBY | EXTENDED PANORAMIC TERRACE

	sqm	sqft
Suite Area	532.38	5,730.49
Terrace Area	155.53	1,674.11
Total Area	68791	7,404.60

34 – 44



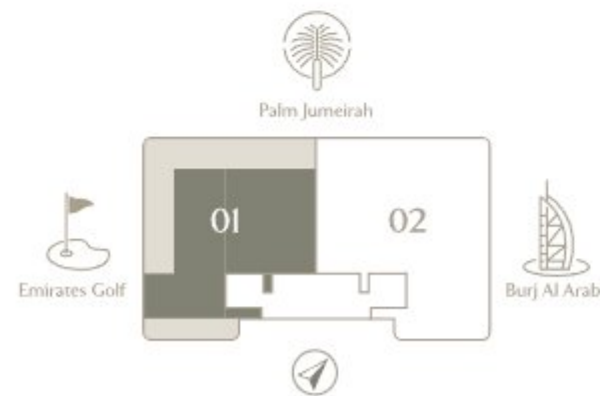
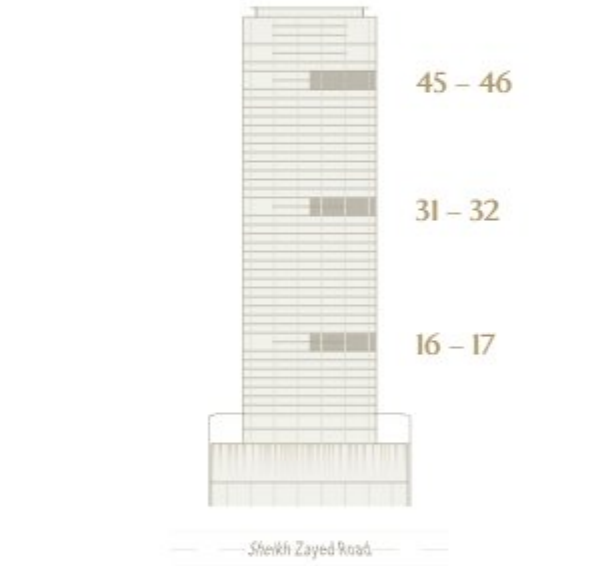
Disclaimer: Any images and visualizations contained herein are provided for illustrative and marketing purposes only. All information contained herein is subject to change without notice and without liability and only the information contained in the final Sales and Purchase Agreement entered into between the Developer and Buyer will have any legal effect. All drawings and dimensions are approximate. Drawings are not to scale and subject to change without notice. The Developer reserves the right to make revisions. The units are taken from the typical floor of a building and dimensions of the units, balcony and the size of columns may vary depending on the floor level and orientation of the unit within the building to comply with the building authority regulations. E&OE.

SIGNATURE DUPLEX VILLAS (LEVEL 1)

5 BEDROOM DUPLEX WEST

5 BEDS | 9 BATHS & 2 POWDER ROOMS | 3 STAFF QUARTERS
PRIVATE POOL & BBQ AREA | MARINA & PALM JUMEIRAH VIEWS

	sqm	sqft
Level 1 Suite Area	540.05	5,813.05
Level 1 Terrace Area	332.09	3,574.59
Level 1 Total Area	872.14	9,387.64



Disclaimer: Any images and visualizations contained herein are provided for illustrative and marketing purposes only. All information contained herein is subject to change without notice and without liability and only the information contained in the final Sales and Purchase Agreement entered into between the Developer and Buyer will have any legal effect. All drawings and dimensions are approximate. Drawings are not to scale and subject to change without notice. The Developer reserves the right to make revisions. The units are taken from the typical floor of a building and dimensions of the units, balcony and the size of columns may vary depending on the floor level and orientation of the unit within the building to comply with the building authority regulations. E&OE

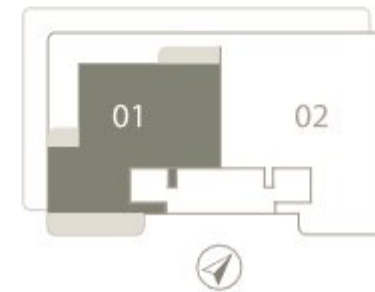
SIGNATURE DUPLEX VILLAS (LEVEL 2)

5 BEDROOM DUPLEX WEST

5 BEDS | 9 BATHS & 2 POWDER ROOMS | 3 STAFF QUARTERS
PRIVATE POOL & BBQ AREA | MARINA & PALM JUMEIRAH VIEWS

	sqm	sqft
Level 2 Suite Area	492.42	5,300.36
Level 2 Terrace Area	114.59	1,233.44
Level 2 Total Area	607.01	6,533.80

	sqm	sqft
Total Suite Area	1,032.47	11,113.41
Total Terrace Area	446.68	4,808.02
Total Area	1,479.15	15,921.44



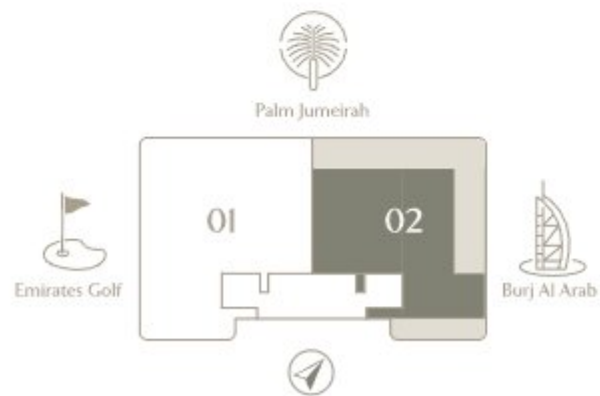
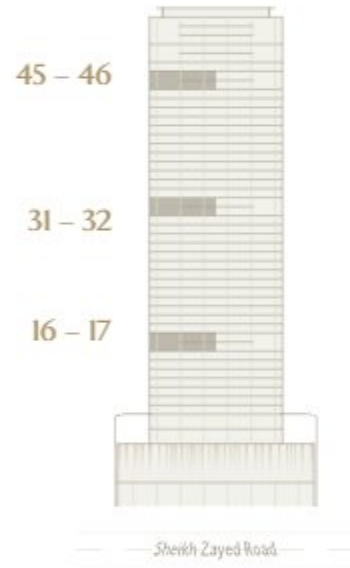
Disclaimer: Any images and visualizations contained herein are provided for illustrative and marketing purposes only. All information contained herein is subject to change without notice and without liability and only the information contained in the final Sales and Purchase Agreement entered into between the Developer and Buyer will have any legal effect. All drawings and dimensions are approximate. Drawings are not to scale and subject to change without notice. The Developer reserves the right to make revisions. The units are taken from the typical floor of a building and dimensions of the units, balcony and the size of columns may vary depending on the floor level and orientation of the unit within the building to comply with the building authority regulations. E&OE

SIGNATURE DUPLEX VILLAS (LEVEL 1)

5 BEDROOM DUPLEX EAST

5 BEDS | 9 BATHS & 2 POWDER ROOMS | 3 STAFF QUARTERS
PRIVATE POOL & BBQ AREA | BURJ AL ARAB & PALM JUMEIRAH VIEWS

	sqm	sqft
Level 1 Suite Area	539.86	5,811.00
Level 1 Terrace Area	332.09	3,574.59
Level 1 Total Area	871.95	9,385.59



Disclaimer: Any images and visualizations contained herein are provided for illustrative and marketing purposes only. All information contained herein is subject to change without notice and without liability and only the information contained in the final Sales and Purchase Agreement entered into between the Developer and Buyer will have any legal effect. All drawings and dimensions are approximate. Drawings are not to scale and subject to change without notice. The Developer reserves the right to make revisions. The units are taken from the typical floor of a building and dimensions of the units, balcony and the size of columns may vary depending on the floor level and orientation of the unit within the building to comply with the building authority regulations. E&OE

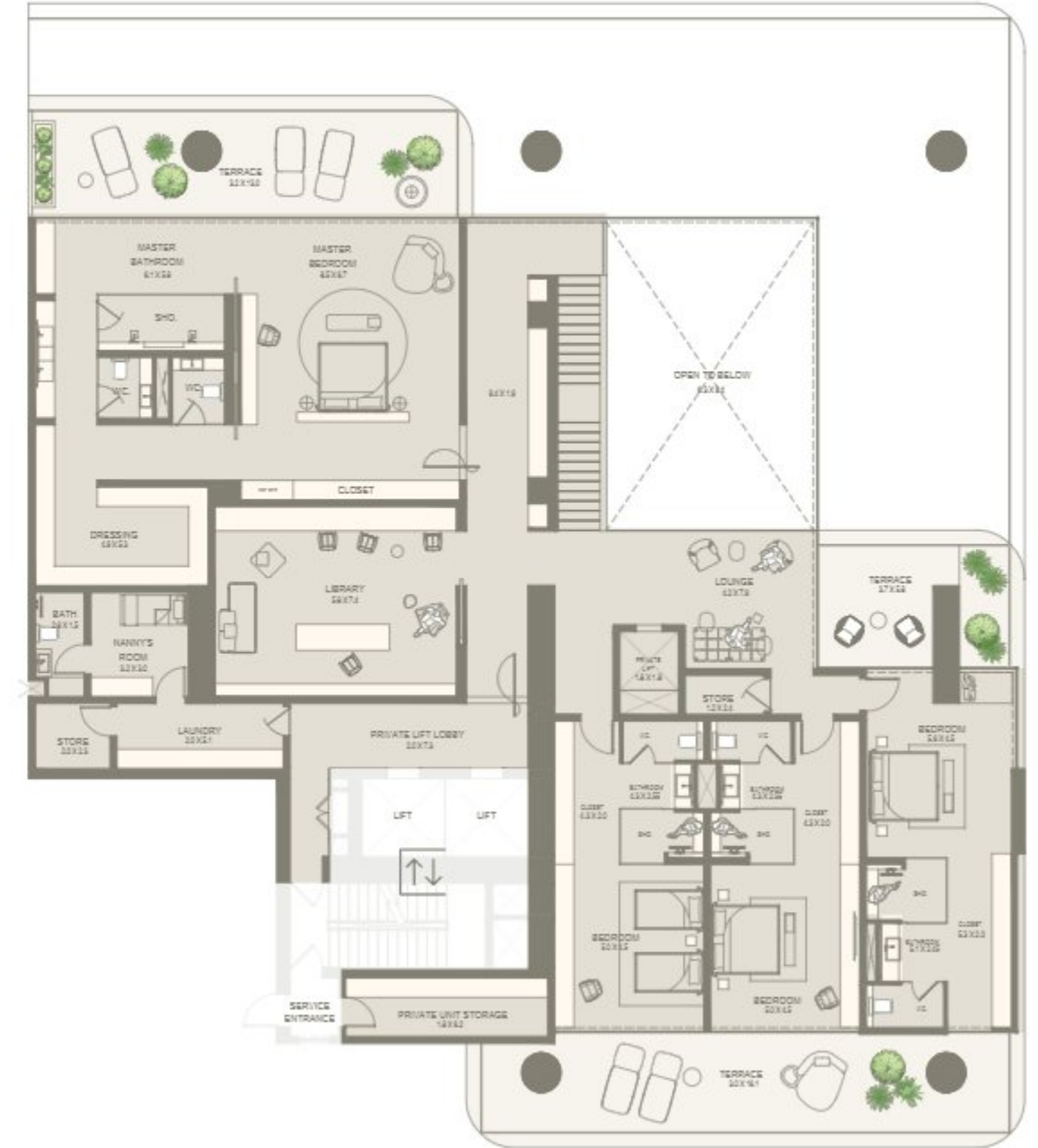
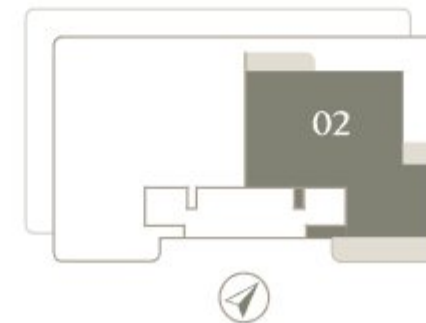
SIGNATURE DUPLEX VILLAS (LEVEL 2)

5 BEDROOM DUPLEX EAST

5 BEDS | 9 BATHS & 2 POWDER ROOMS | 3 STAFF QUARTERS
PRIVATE POOL & BBQ AREA | BURJ AL ARAB & PALM JUMEIRAH VIEWS

	sqm	sqft
Level 2 Suite Area	492.26	5,298.64
Level 2 Terrace Area	114.59	1,233.44
Level 2 Total Area	606.85	6,532.08

	sqm	sqft
Total Suite Area	1,032.12	11,109.65
Total Terrace Area	446.68	4,808.02
Total Area	1,478.80	15,917.67



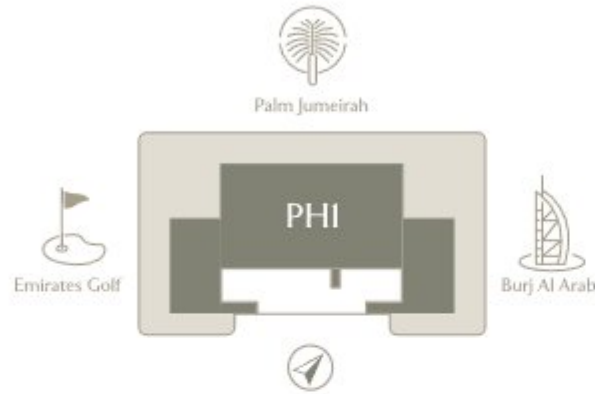
Disclaimer: Any images and visualizations contained herein are provided for illustrative and marketing purposes only. All information contained herein is subject to change without notice and without liability and only the information contained in the final Sales and Purchase Agreement entered into between the Developer and Buyer will have any legal effect. All drawings and dimensions are approximate. Drawings are not to scale and subject to change without notice. The Developer reserves the right to make revisions. The units are taken from the typical floor of a building and dimensions of the units, balcony and the size of columns may vary depending on the floor level and orientation of the unit within the building to comply with the building authority regulations. E&OE

THE SKY MANSION (LEVEL 1)

6 BEDROOM PENTHOUSE DUPLEX

6 BEDS | 10 BATHS & 2 POWDER ROOMS | ONE OF A KIND
360° PANORAMIC TERRACE | PRIVATE WELLNESS AMENITIES

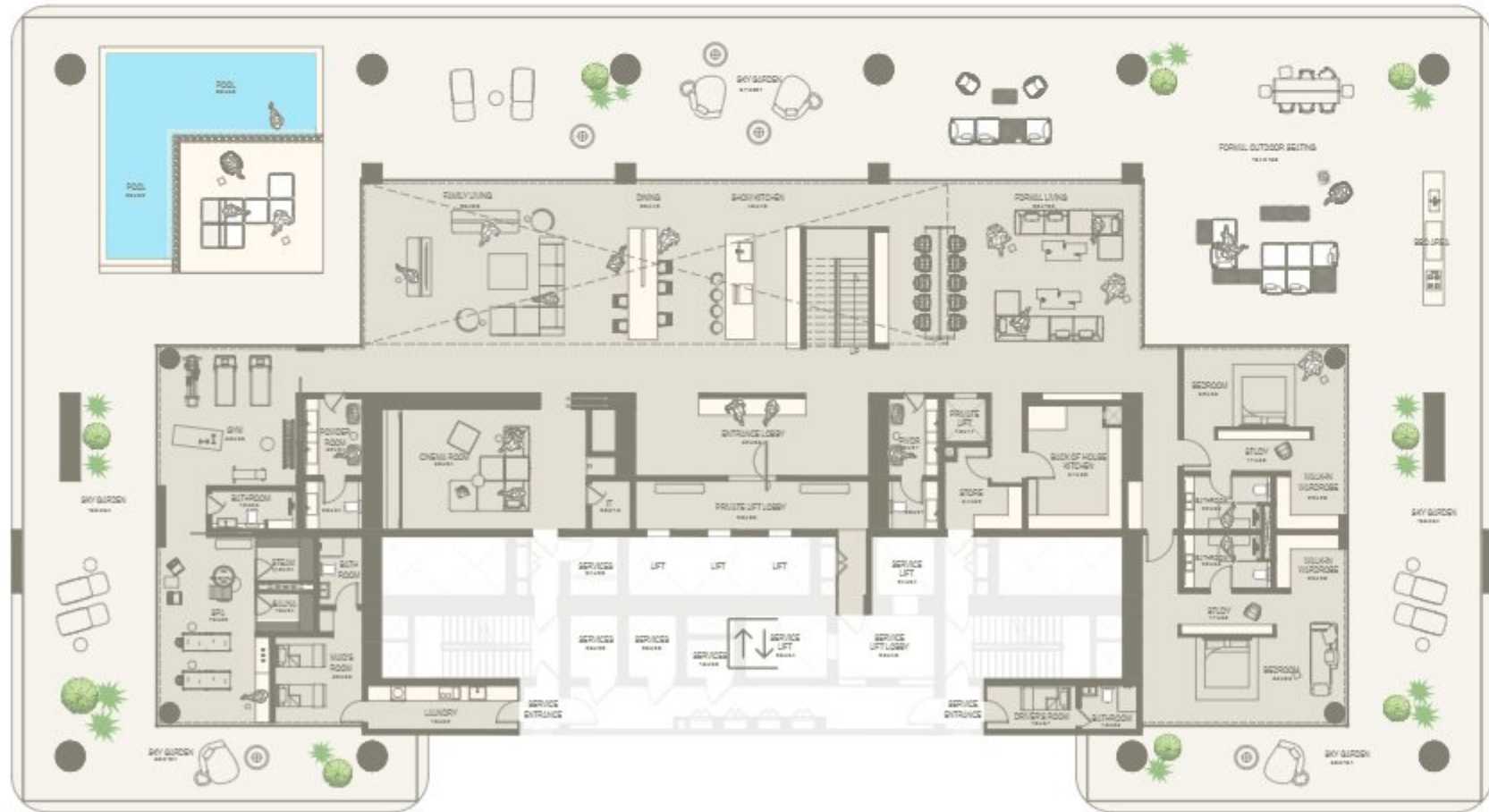
	sqm	sqft
Level 1 Suite Area	761.28	8,194.35
Level 1 Terrace Area	860.10	9,258.04
Level 1 Total Area	1621.38	17,452.39



48 & 49



Sheikh Zayed Road



Disclaimer: Any images and visualizations contained herein are provided for illustrative and marketing purposes only. All information contained herein is subject to change without notice and without liability and only the information contained in the final Sales and Purchase Agreement entered into between the Developer and Buyer will have any legal effect. All drawings and dimensions are approximate. Drawings are not to scale and subject to change without notice. The Developer reserves the right to make revisions. The units are taken from the typical floor of a building and dimensions of the units, balcony and the size of columns may vary depending on the floor level and orientation of the unit within the building to comply with the building authority regulations. E&OE.

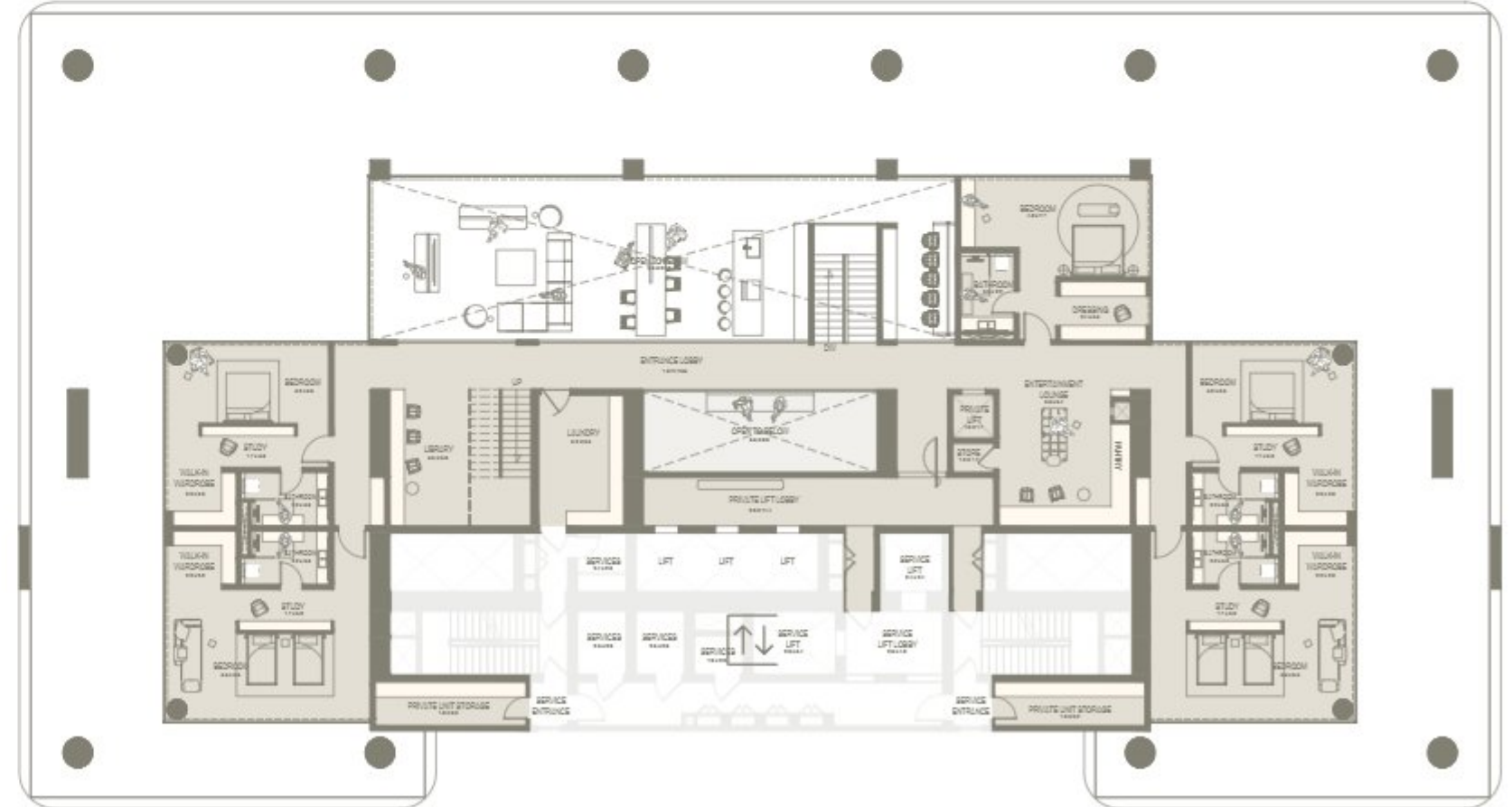
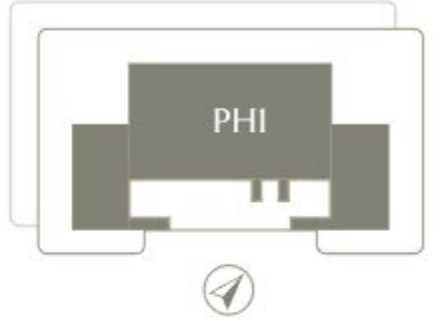
THE SKY MANSION (LEVEL 2)

6 BEDROOM PENTHOUSE DUPLEX

6 BEDS | 10 BATHS & 2 POWDER ROOMS | ONE OF A KIND
360° PANORAMIC TERRACE | PRIVATE WELLNESS AMENITIES

	sqm	sqft
Level 2 Suite Area	586.83	6,316.59
Level 2 Terrace Area	-	-
Level 2 Total Area	586.83	6,316.59

	sqm	sqft
Total Suite Area	1,348.11	14,510.94
Total Terrace Area	860.10	9,258.04
Total Area	2,208.21	23,768.97



Disclaimer: Any images and visualizations contained herein are provided for illustrative and marketing purposes only. All information contained herein is subject to change without notice and without liability and only the information contained in the final Sales and Purchase Agreement entered into between the Developer and Buyer will have any legal effect. All drawings and dimensions are approximate. Drawings are not to scale and subject to change without notice. The Developer reserves the right to make revisions. The units are taken from the typical floor of a building and dimensions of the units, balcony and the size of columns may vary depending on the floor level and orientation of the unit within the building to comply with the building authority regulations. E&OE.

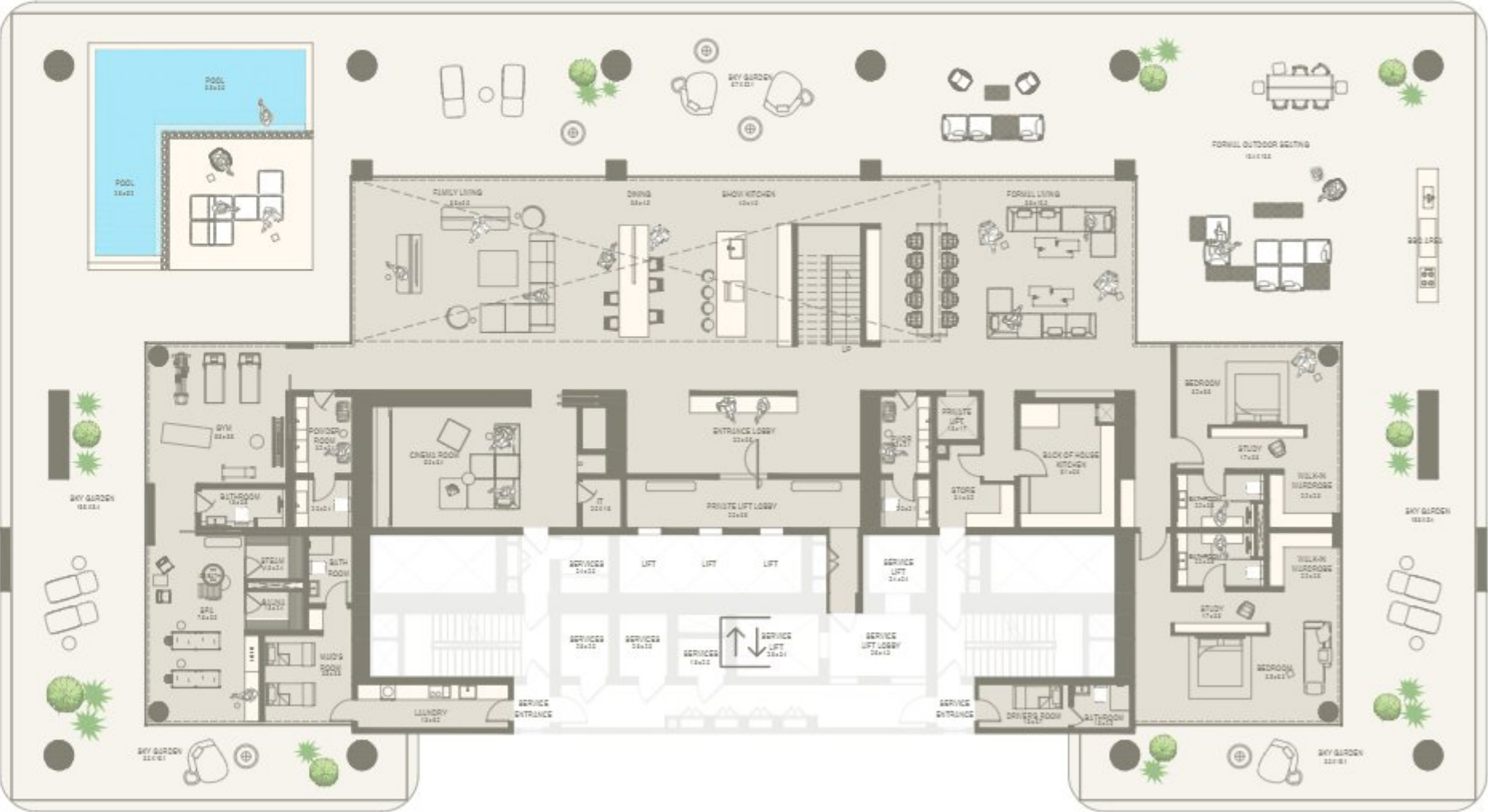
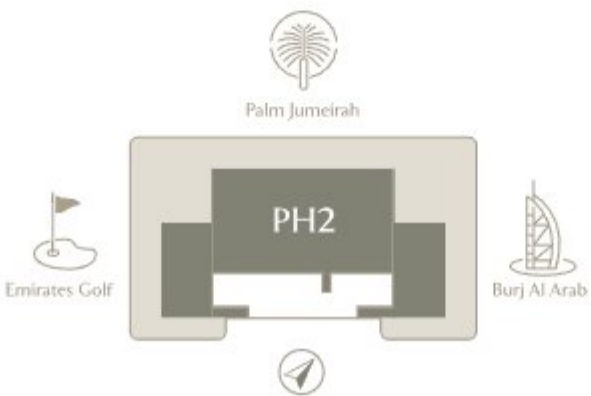
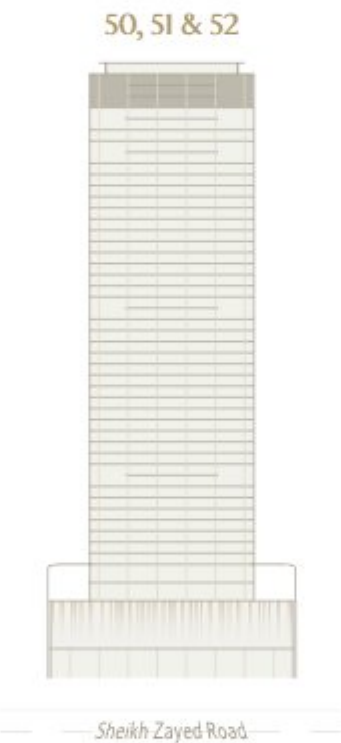


THE PINNACLE MANSION (LEVEL 1)

8 BEDROOM PENTHOUSE TRIPLEX

8 BEDS | 14 BATHS & 2 POWDER ROOMS | ONE OF A KIND 360° PANORAMIC TERRACE | PRIVATE WELLNESS AMENITIES

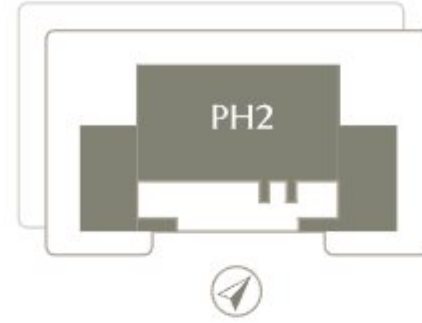
	sqm	sqft
Level I Suite Area	761.28	8,194.35
Level I Terrace Area	860.08	9,257.82
Level I Total Area	1,621.36	17,452.17



Disclaimer: Any images and visualizations contained herein are provided for illustrative and marketing purposes only. All information contained herein is subject to change without notice and without liability and only the information contained in the final Sales and Purchase Agreement entered into between the Developer and Buyer will have any legal effect. All drawings and dimensions are approximate. Drawings are not to scale and subject to change without notice. The Developer reserves the right to make revisions. The units are taken from the typical floor of a building and dimensions of the units, balcony and the size of columns may vary depending on the floor level and orientation of the unit within the building to comply with the building authority regulations. E&OE.

THE PINNACLE MANSION (LEVEL 2)

	sqm	sqft
Level 2 Suite Area	588.66	6,336.28
Level 2 Terrace Area	-	-
Level 2 Total Area	588.66	6,336.28



50, 51 & 52



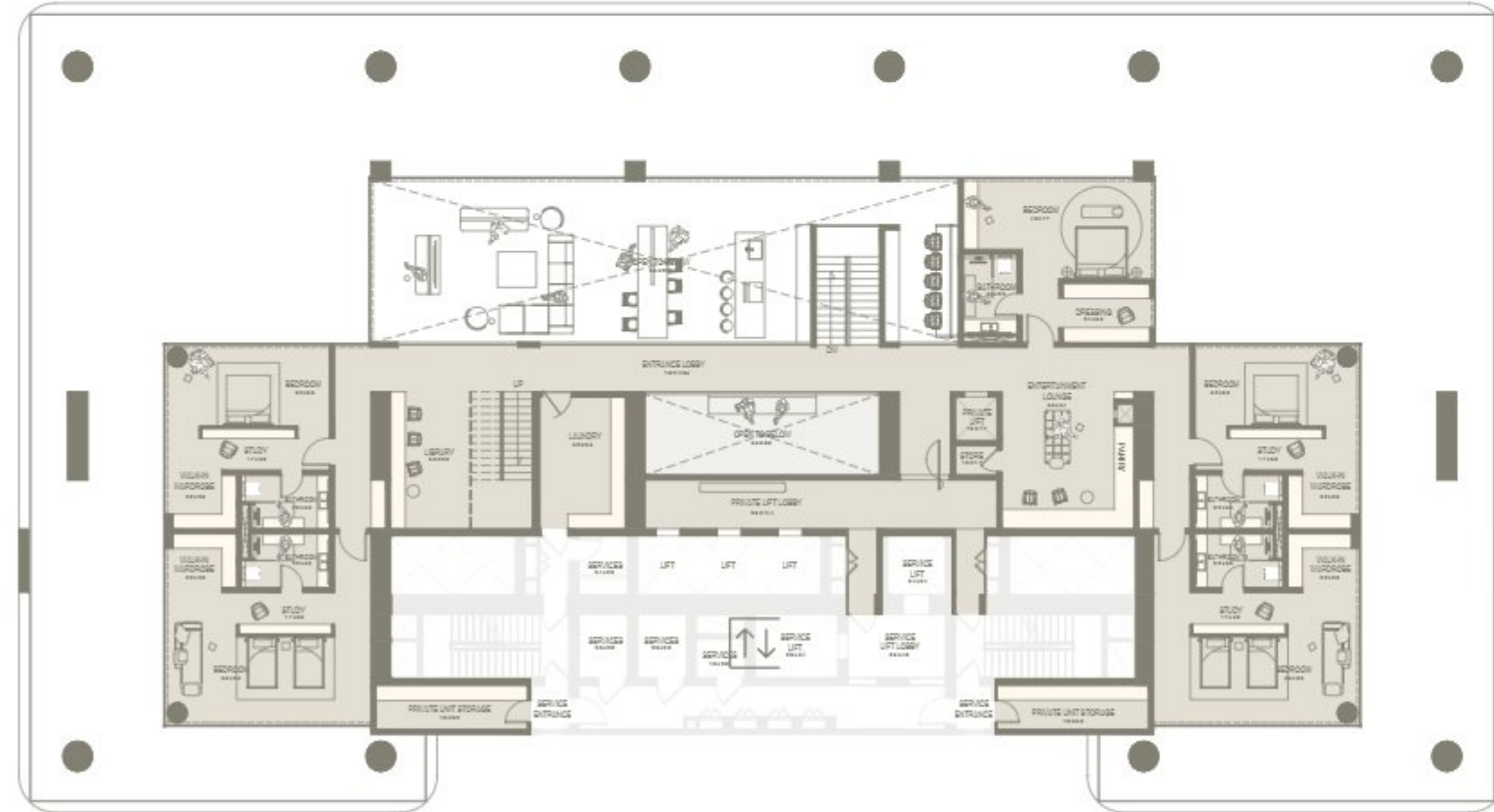
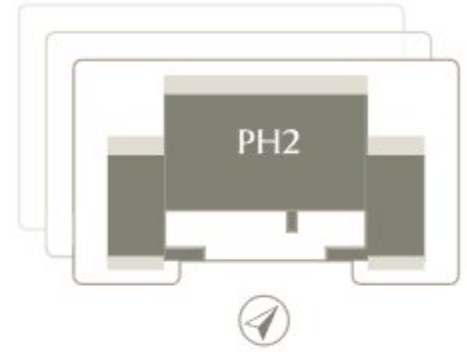
Sheikh Zayed Road

THE CHEDI
PRIVATE RESIDENCES
SHEIKH ZAYED ROAD, ABU DHABI, U.A.E.

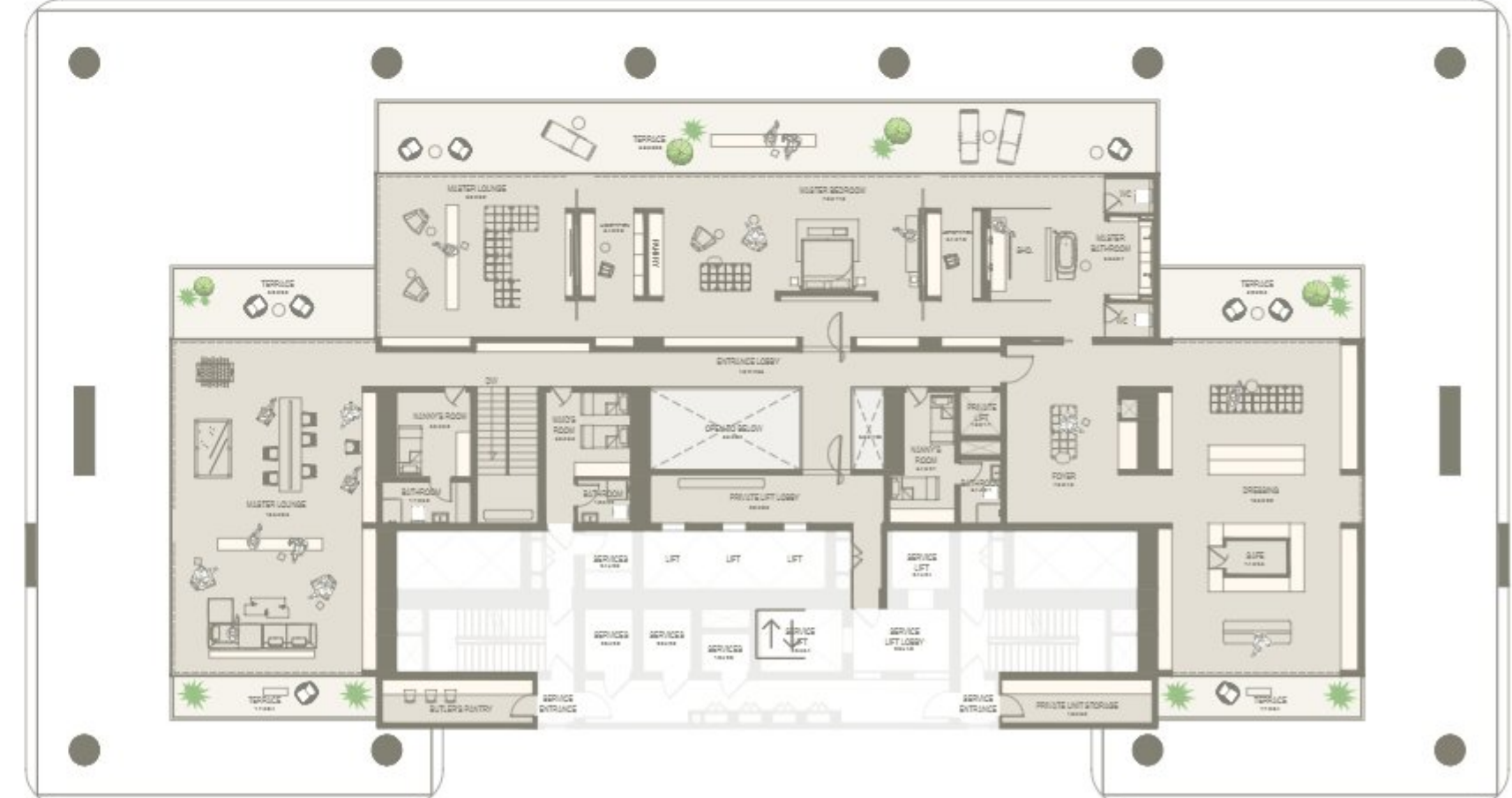
THE PINNACLE MANSION (LEVEL 3)

	sqm	sqft
Level 3 Suite Area	700.93	7,544.75
Level 3 Terrace Area	177.73	1,913.07
Level 3 Total Area	878.66	9,457.82

	sqm	sqft
Total Suite Area	2,050.87	22,075.38
Total Terrace Area	1,037.81	11,170.89
Total Area	3,088.68	33,246.27



Disclaimer: Any images and visualizations contained herein are provided for illustrative and marketing purposes only. All information contained herein is subject to change without notice and without liability and only the information contained in the final Sales and Purchase Agreement entered into between the Developer and Buyer will have any legal effect. All drawings and dimensions are approximate. Drawings are not to scale and subject to change without notice. The Developer reserves the right to make revisions. The units are taken from the typical floor of a building and dimensions of the units, balcony and the size of columns may vary depending on the floor level and orientation of the unit within the building to comply with the building authority regulations. E&OE.



Disclaimer: Any images and visualizations contained herein are provided for illustrative and marketing purposes only. All information contained herein is subject to change without notice and without liability and only the information contained in the final Sales and Purchase Agreement entered into between the Developer and Buyer will have any legal effect. All drawings and dimensions are approximate. Drawings are not to scale and subject to change without notice. The Developer reserves the right to make revisions. The units are taken from the typical floor of a building and dimensions of the units, balcony and the size of columns may vary depending on the floor level and orientation of the unit within the building to comply with the building authority regulations. E&OE.



housebook Real Estate Company
since 2012 in the UAE

+971 (4) 412-5007

Managers of partnerships



Alevtina Kapustina



Svetlana Guseva

Office

Housebook Real Estate LCC

Dubai Marina, office 2502-01, Dubai, UAE

Company license: 1128098

ae.housebook.deals

partner@housebook.ae

